



CIRQA

P A R A D O R E N A R E Q U I P A



PRELIMINARY FACT SHEET

CIRQA

Located in the historic centre of Arequipa, Cirqa shares an age-old bond with the San Agustín Church. Like the Church's traditional *parador*, where monks would receive travellers with one-of-a-kind service and hearty cuisine, Cirqa was fervently inspired by the unbounded hospitality and ecclesiastical history that still define Arequipa to its core.

Honouring this original concept, it is a place of both rest and fine cuisine. In the *parador*, travellers can embark on a myriad of excursions or choose to sample homegrown dishes in the several eating areas. The *parador* offers eleven exquisite rooms, centred around two outdoor patios, revealing a blend of Arequipenean authenticity with a contemporary, robust style, thus giving way to an intriguing reinterpretation of history.

As Arequipenean tradition dictates, good food is fundamental. On the one hand, our *Salón* serves exclusively to overnight guests and a few outside guests with prior reservation. On the other hand, our rooftop eatery will be open to the public.

Designed by the same creative team behind Titilaka, Hotel B and Atemporal, Cirqa is an expansion of the renowned Titilaka Lodge with the same level of services and facilities. With astonishing views overlooking the cathedral and snow-capped volcano Misti, Cirqa is the ideal gateway to acclimatise to the altitude before continuing on to the higher destinations. Check in at Cirqa, check out at Titilaka and combine two spectacular Peruvian destinations.

— “Circa” — *Preposition* • FORMAL • > (used especially with years) *about* or *approximately*

Cirqa alludes to the word *circa* in its attempt to determine a certain moment or period in time, but is written with a Q as in Arequipa— emphasising the strong connection to the city's history, traditions and heritage.

// Arequipa was founded circa 1540.

// The San Agustín Church's most recent reconstruction took place circa 1883.

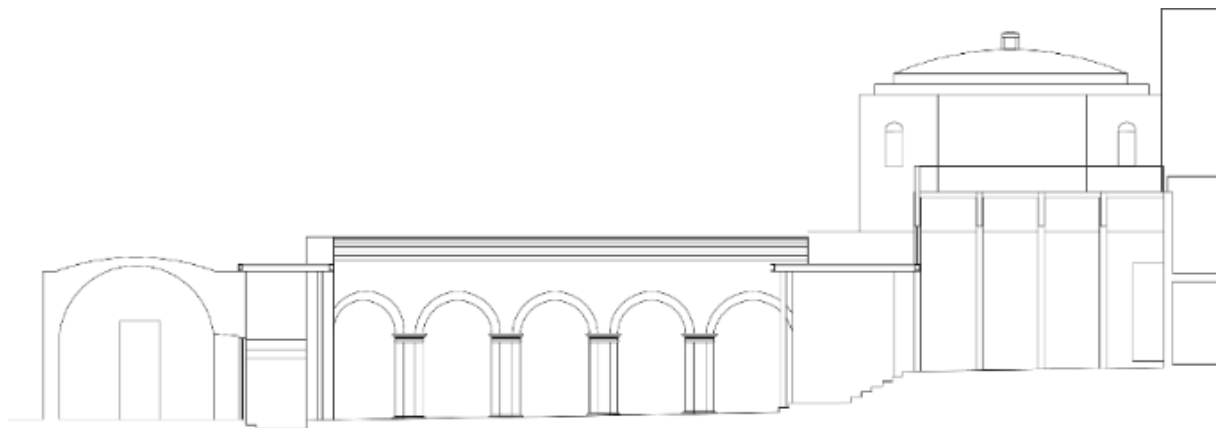
HISTORY

When investigating the history of the property, many different dates emerged. In 1540, the year in which Arequipa was built, the land was divided between its founders and the Spanish nobility of the time. The land on which Cirqa now sits was granted to Alonso De Luque, a renowned scribe. He later bequeathed it to the Augustinian Order requesting to build a church with cloisters, patios, orchards and gardens as well as a sepulchre for him and his wife under the future altar of Saint Nicholas of Tolentino.

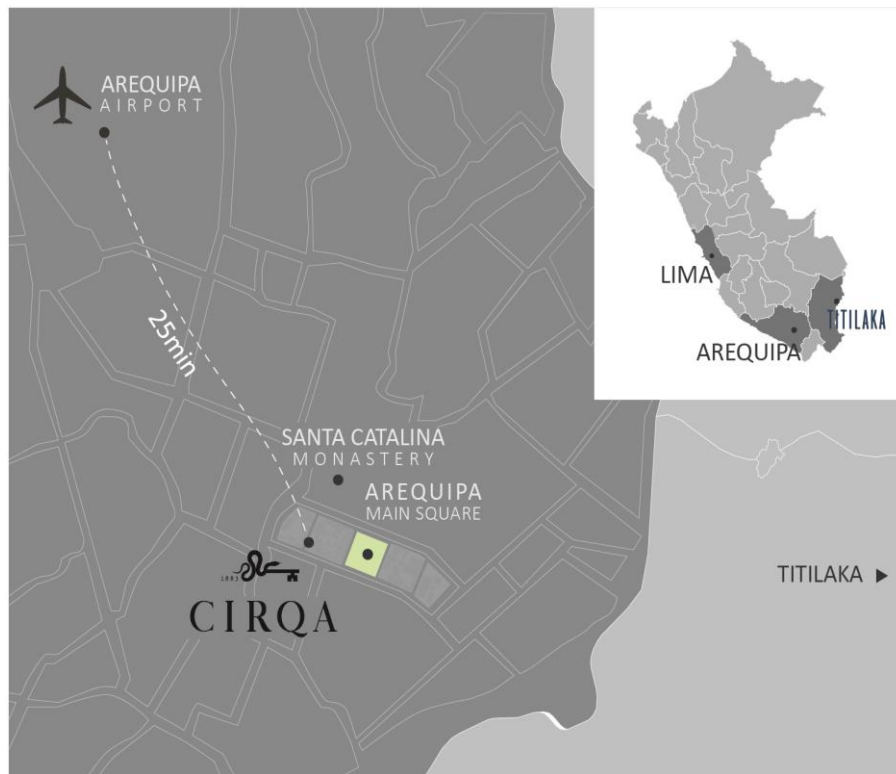
Unfortunately, after the Church was erected, construction work never stopped. Successive earthquakes continuously tore down parts of the edifice thus triggering several simultaneous reconstruction processes and complicating the determination of precise dates and definitive styles.

After Peru's independence, Spanish assets were nationalized and the property was given to the Treasury so the division of land took place once again. The property was passed down from family to family, but the curse of earthquakes stood strong. In 1883, yet another one left the Church in ruins, causing the board of Almudena to auction off the entire lot. At the end of the 20th century, the property was ultimately divided into three parts after inheritance, two of which now correspond to Cirqa.

Today, Cirqa is recognized for the emblematic estate it once was. The appreciation for its centuries-long history combined with current contemporary nuances make for a small private hotel applauded for its astounding architectural interior, partly made of volcanic sillar rock, and personalized high-quality service.



LOCATION



As Peru's second largest city, Arequipa is located at an altitude of 2335 m (7661 ft) and safely surrounded by three snow-capped volcanoes. At the heart of Peru's southern circuit, this colonial gem is home to beautiful architecture and a wonderful year-round climate. At 1014 km (630 miles) from Lima and 293 km (182 miles) away from Titilaka, Arequipa is the perfect starting point to explore the southern circuit of Peru.

Besides its unlimited gastronomic heritage, Arequipa's cobblestone streets, grand cathedrals and colourful monasteries make for a perfectly picturesque destination fit for travellers of all ages. Cirqa is located only one block away from the city's main square. The striking historic complex formed part of the San Agustín church and lies within walking distance of many of Arequipa's architectural jewels.

Address: Sucre 104, Arequipa 04001, Perú

ACCESS, CLIMATE & ALTITUDE

By car:

- 3 hrs from Chivay / Colca Canyon
- 6 hrs from Titilaka
- 9 hrs from Cusco
- 9 hrs from Nazca
- 16 hrs from Lima

By plane:

- 90-minute flight from Lima (>10 direct flights per day)
- 1-hour flight from Cusco (one or two direct flights per day, others with stopover in Lima)
- 2-hour flight from Santiago (two flights per week)

By train:

3d/2n by train (The Andean Explorer) from Cusco

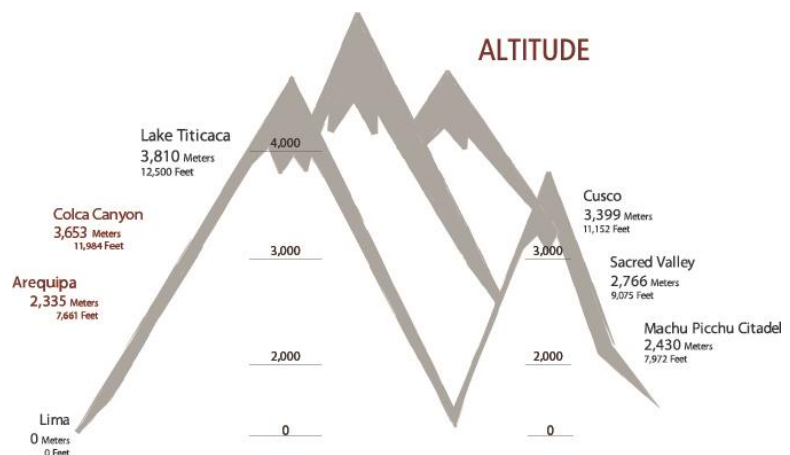
Leaves Cusco on Thursday, arrives at Arequipa on Saturday.

Leaves Arequipa on Saturday, arrives at Cusco on Monday.

WEATHER

Average precipitation days	JAN 22°/9° C 71°/47° F 4.8 days	FEB 21°/9° C 71°/48° F 5.6 days	MAR 24°/8° C 76°/47° F 4.5 days	APR 25°/7° C 77°/45° F 0.7 days	MAY 22°/6° C 72°/43° F 0.1 days	JUN 22°/5° C 71°/42° F 0.0 days
	JUL 22°/5° C 71°/41° F 0.0 days	AUG 22°/5° C 72°/42° F 0.1 days	SEP 23°/6° C 73°/43° F 0.3 days	OCT 23°/6° C 73°/44° F 0.1 days	NOV 23°/7° C 73°/44° F 0.2 days	DEC 23°/8° C 73°/46° F 1.6 days

ALTITUDE



HOTEL FACILITIES & SERVICES

The estate echoes 1540 – the year in which Arequipa was built - and safeguards the unique character of its traditional Arequipenean architecture. Cirqa's powerful walls, arches and columns, all made of volcanic sillar rock, were conserved as carefully as possible and form the timeless nucleus of the property on the first floor where carefully designed rooms, of which some have the original high-vaulted ceiling. The rooftop is converted into an organic garden which serves as the base for a rural style picantería in the heart of the city.

HOTEL FACILITIES

- 11 rooms in three different categories
- Salón: dining room and sitting area
- Terraza
- Patio with heated plunge pool and therapy spa room
- Private vehicles

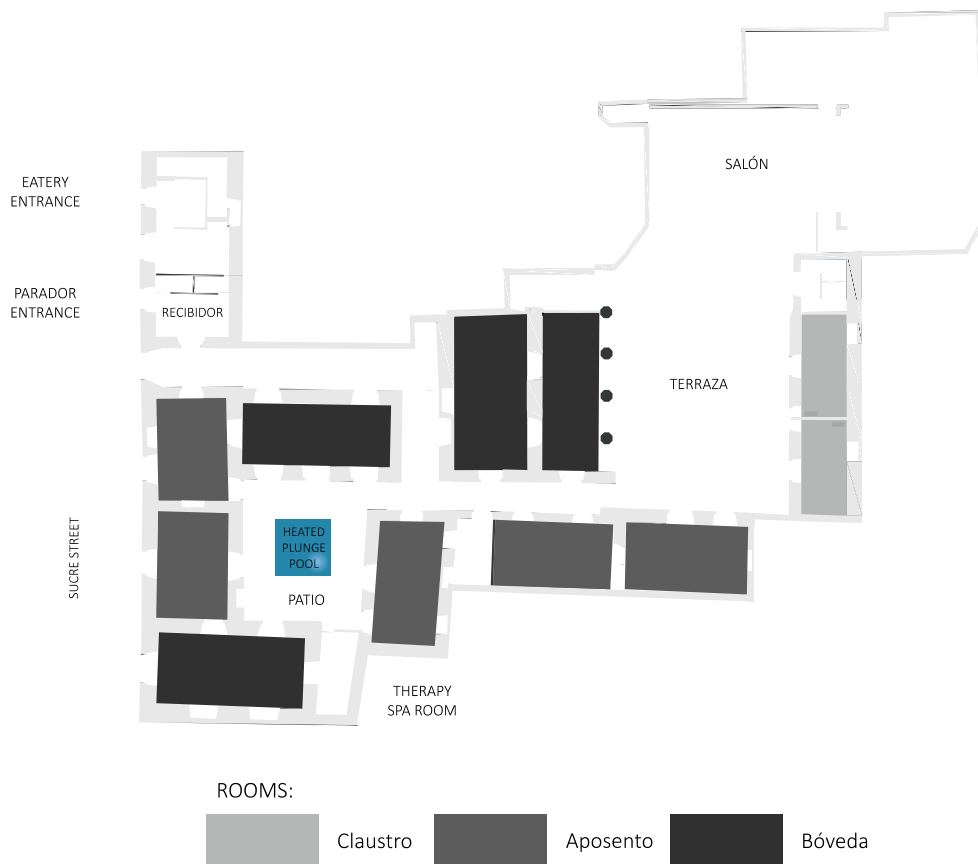
HOTEL SERVICES

Available only to guests

- In-room check-in
- 24-hour on-site concierge service
- 24/7 room service
- Complimentary Wi-Fi and mobile hotspot with 4G connection in the city
- Spa and massage services
- Salón / Dining room: for the exclusive use of guests or with reservation beforehand
- Private transfers and excursions

HOTEL FLOORPLAN

1st floor: Parador



2nd floor: Rooftop Eatery (to open late 2019)

KITCHEN

Cirqa's cuisine is inspired by the taste and ingredients of the traditional Arequipenean countryside *picanterías*, but in a contemporary format. The Salón is exclusively available for guests or those with prior reservation (limited). The rooftop eatery, however, will be open to the general public.

SALÓN / DINING ROOM

With enticing aromas carried throughout the city, María Fe García, executive chef at Titilaka and Cirqa, was immediately inspired by the native blend of flavours. While Arequipenean gastronomy is known for its abundance, use of local ingredients and spice, Cirqa adds a refined touch to every dish. All lunch and dinner options, locally-inspired or all-time classics, captivate the essence of Arequipa, its heritage, legacy and traditions.

ROOFTOP EATERY (COMING SOON)

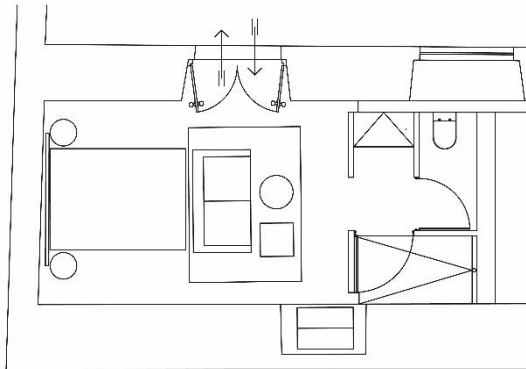
In addition to its dining room, Cirqa will also feature a rooftop eatery accompanied by an organic garden. Via a separate entrance to the 2nd floor above the hotel, the eatery will delight you with incredible 360° views of the city, cathedral, volcanoes and mountains. The inauguration is planned for the second semester of 2019.

Seating capacity: 15-30 guests. Available for private events.

ROOM FACILITIES & SERVICES

The parador offers eleven exquisite rooms, centred around two patios. Every room is decorated with sophisticated sturdy furniture, the finest linens and includes a smart HDTV with DirecTV and Netflix, air conditioning and heating, a personal safe, a wireless speaker, organic tailor-made amenities, complimentary snacks and beverage hamper and housekeeping twice a day.

> CLAUSTRO



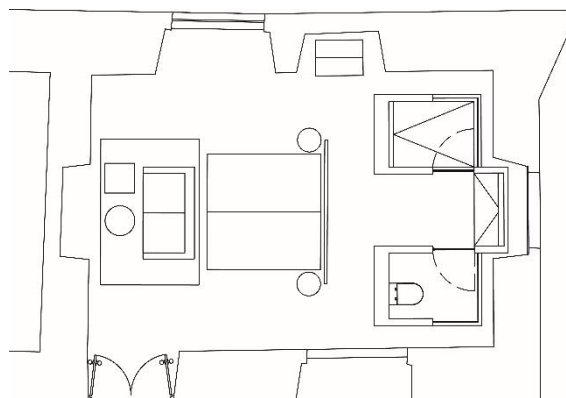
The clean, robust furniture and the focus on the original architecture make these compact, but homey chambers the perfect retreats. Intimate rooms that reminisce about colonial pasts while offering you all the comfort and cosiness you could wish for.

2 rooms (19.2-20.8m² / 206.7-223.9 sq. ft.). These rooms include a queen bed, open wardrobe and a sofa. They also have a private bathroom with walk-in rainfall shower, toilet with bidet shower, heated towel rail, sink, mirror and bathroom amenities.

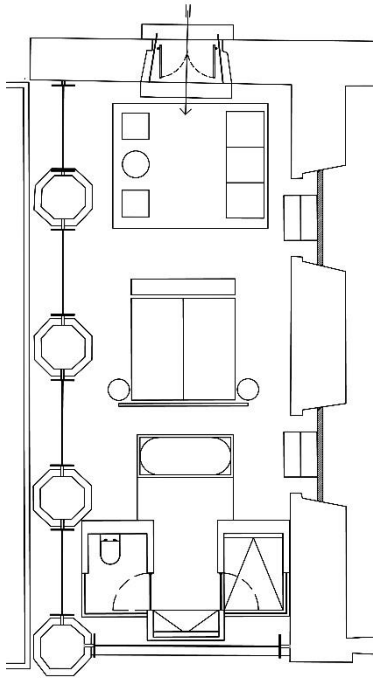
APOSENTO <

Breathing colonial cultural heritage, these tranquil spacious rooms are a peaceful hideaway for every discerning guest. Unwind and let us pamper you with the renowned traditional Arequipenean hospitality.

5 Rooms (31.5-36.3m² / 339.1-390.7 sq. ft.) come with 2 twin beds or 1 king bed, a sofa and a table/desk, open wardrobe as well as a private bathroom with walk-in rainfall shower, toilet with bidet shower, heated towel rail, sink, mirror and bathroom amenities.



> Referential sketches



> BÓVEDA

The original high-vaulted ceilings, sillar stone and prestigious interior recall the ancient Parador times and will have you discover the abundant artistic mysteries of Arequipa in its many rich details.

4 rooms (39.9-49.7m² / 429.5-534.7 sq. ft.) available with 2 twin beds or 1 king bed. These rooms have a salon with two sofas, a table/desk and open wardrobe. They also have a private bathroom with walk-in rainfall shower and separate bathtub as well as a toilet with bidet shower, heated towel rail, sink, mirror and bathroom amenities.

> Referential sketch

ROOM SERVICES

Available only to guests

- In-room air conditioning and heating
- Complimentary snacks and beverage hamper
- TV, cable connection, DirecTV and Netflix
- Wireless speaker
- Tailor-made amenities
- Turndown service and housekeeping twice a day
- Complimentary ironing and shoe shine service

BOARD BASES

Our rooms are available on two board bases:

HALF BOARD

Per room, per night

- Room
- Breakfast
- Lunch or dinner
- Complimentary snacks and beverage hamper
- Afternoon tea
- Welcome drink
- Complimentary Wi-Fi and mobile hotspot with 4G connection in the city
- All excursions, activities and transfers can be booked separately for an additional cost.

FULLY INCLUSIVE PLUS

Per person, per night

- Room
- Breakfast, lunch and dinner
- Complimentary snacks and beverage hamper
- Afternoon tea
- Welcome drink and afternoon cocktail
- Complimentary Wi-Fi and mobile hotspot with 4G connection in the city
- Transfers to and from airport and train station
- Airport VIP lounge access
- Excursions: Several short excursions, two combined excursions or one full day in Arequipa and surroundings or a discovery transfer to Titilaka. For a detailed list, please refer to the tables below.

Excursions <u>included</u> in Fully Inclusive Plus	
<i>Short Excursions</i>	<ul style="list-style-type: none"> • Santa Catalina • Santa Teresa • Cathedral Museum • Juanita's Sanctuary (Santuarios Andinos Museum) • Sachaca Viewpoint • Mario Vargas Llosa Museum • Sillar Quarries (Añashuayco & Culebrillas)
<i>Combined Excursions</i>	<ul style="list-style-type: none"> • Colonial Arequipa • Barrios around Chili • Monasteries of Arequipa
<i>Full-day Excursions</i>	<ul style="list-style-type: none"> • Discovery transfer to Titilaka
<i>Special Activities</i>	Not included, additional cost
<i>Transfers</i>	<ul style="list-style-type: none"> • To and from the airport • To and from the train station

Excursions Summary	Description	Duration		
		1-3 hrs.	4-6 hrs.	7-10 hrs.
SHORT EXCURSIONS				
<ul style="list-style-type: none">Santa Catalina	Perhaps the most photogenic convent in Peru, this 16th century convent is a labyrinth of multicoloured streets, courtyards and chambers.	2		
<ul style="list-style-type: none">Santa Teresa	Albeit smaller lesser-known than Santa Catalina, Santa Teresa it is just as exquisitely beautiful thanks to a stunning collection of colonial religious art from the 17th and 18th centuries.	1		
<ul style="list-style-type: none">Cathedral Museum	The grand white cathedral is the symbol of the city. Inside, a small museum showcases fine religious items and gives you access to a bewitching view of the main square.	1		
<ul style="list-style-type: none">Santuarios Andinos Museum (Mummy Juanita)	The Museum of Andean Sanctuaries is focused predominantly around Mummy Juanita. Believed to be the victim of ritual sacrifice, this young girl's mummified body was found at Mountain Ampato’s peak about 70 kilometres from Arequipa.	1		
<ul style="list-style-type: none">Sachaca Panorama	The Sachaca observatory tower, located in a small hillside barrio on the edge of the campiña, amazes you with a 360° view over Arequipa and its surrounding volcanoes.	2		
<ul style="list-style-type: none">Mario Vargas Llosa Museum	The native house of Peru's most celebrated author and winner of the Nobel Prize for Literature in 2010, has been turned into a Museum honouring his life and work. Over the course of 1.5 hours holograms and videos will tell you all about his life, influences, politics and literature.	2.5		
<ul style="list-style-type: none">Sillar Quarries (Añashuayco & Culebrillas)	In the Añashuayco valley quarrymen extract and shape the typical white volcanic stone that give Arequipa its distinctive architectural style. Culebrillas Canyon is a lesser-known quarry where enigmatic petroglyphs dating from over 1000 years ago can be spotted.	3		

COMBINED EXCURSIONS				
<ul style="list-style-type: none"> Colonial Arequipa 	A half day walk to explore the historical centre of Arequipa, declared a World Heritage Site by UNESCO, guided by a local friend. Starting on the Plaza de Armas, we'll pass by the San Camilo market, cloister of la Compañía, San Francisco street and square, and the charming barrio of San Lázaro.		4	
<ul style="list-style-type: none"> Barrios around Chili 	We'll leave the historic centre of Arequipa and cross the Chili River to explore the charming neighbourhood of Yanahuara and the Carmen Alto panorama to enjoy splendid views of volcanoes and ancient terraced fields. This excursion is a mix of short drives and easy walks.		2.5	
<ul style="list-style-type: none"> Arequipa's Monasteries 	With its centuries-old cathedrals and many archaeological museums, Arequipa is jam-packed with history and culture. Some of the most popular sites to see in Arequipa are the Santa Catalina Monastery and the Santa Teresa Convent and the Claustros de la Compañía with its breath-taking colourful chapel.		4	
FULL DAY EXCURSIONS				
<ul style="list-style-type: none"> Volcanes, Vicuñas y Salares 	A full day drive through the beautiful highlands of Arequipa. Most of the day is spent at altitude and on unpaved roads. We'll visit the National Salinas y Aguada Blanca, spot vicuñas and guanacos, explore a Stone forest and get close to real-life alpacas and llamas.			8
<ul style="list-style-type: none"> Cirqa → Titilaka 	An all-day scenic discovery drive with several stops across the high-altitude plains and the Salinas and Aguada Blanca National Reserve to our Titilaka Lodge spotting vicuñas, guanacos and flamingos on the way.			8
OVERNIGHT EXCURSIONS (1 or 2 nights)				
<ul style="list-style-type: none"> Cirqa → Colca → Cirqa/Titilaka 	<p>Driving alongside volcanoes Misti and Chachani, this 5-hour drive enters the Salinas and Aguada Blanca National Reserve to finally descend into the canyon itself.</p> <p>The following morning, we'll head out at dawn to and drive for 1.5 hours to spot the magnificent condors soaring in the</p>			X

	<p>thermal winds. After a hearty lunch, we'll continue our journey back to Arequipa (or to Titilaka), stopping at several quaint colonial-era villages along the way.</p> <p>Following the same itinerary as the two-day excursion, the three-day excursion offers several different options to further explore the valley as well as another tasty lunch.</p> <p><i>Tailor-made excursion, please contact us for further details and packages.</i></p>			
SPECIAL ACTIVITIES at an additional cost				
● Mountain Biking	With stunning views and a wide selection of dedicated itineraries, Arequipa is a great place for mountain biking for both beginners and experts. Various half-day biking options are available to suit different aptitudes.		3	
● Rafting	Enjoy an exciting river rafting trip just 20 minutes from the centre of Arequipa where the Chili river runs through the magnificent Chilina valley. The routes are beginner (class II), intermediate (class III rapids) or advanced level (Class IV).	3		
● Hiking	Only 15 minutes outside of Arequipa's city centre are some of Peru's best hikes. Surrounded by stunning natural landscapes, we'll enjoy a walk through the terraced fields of the Chilina Valley.	2		
TRANSFERS				
● Airport or Train station	Airport and train station transfers are included as a complimentary service in our Fully Inclusive Plus base and as an additional service in our Half Board Base. Our private vehicles will get you safely to your destination with mini amenities and outstanding service to enjoy along the way.	1		
● Colca	If you are eager to explore Colca Canyon, our private transport can get you there in the most comfortable way possible.		4	
● Lake Titicaca	If you are looking for private transport to Puno, Cirqa offers safe and pleasant transfers to Lake Titicaca.			6

APPENDIX: ROOM CHART

Room Number	Room Category	Area (m ²)	Area (Sq ft)	Bed	Bathroom	Other
1	Bóveda	40-50m ²	429-534 sq. ft.	2 Twin or King	<ul style="list-style-type: none"> Bathtub Rainfall shower Toilet with bidet shower Sink, mirror, heated towel rail and bathroom amenities 	<ul style="list-style-type: none"> 2 nightstands 2 coat racks Air conditioning (hot/cold) TV 55" Sitting area with two sofas, table/desk
2	Aposento	32-36m ²	339-390 sq. ft.	2 Twin or King	<ul style="list-style-type: none"> Rainfall shower Toilet with bidet shower Sink, mirror, heated towel rail and bathroom amenities 	<ul style="list-style-type: none"> 2 nightstands Coat rack Air conditioning (hot/cold) TV 49" Sofa and table/desk
3	Aposento	32-36m ²	339-390 sq. ft.	2 Twin or King	<ul style="list-style-type: none"> Rainfall shower Toilet with bidet shower Sink, mirror, heated towel rail and bathroom amenities 	<ul style="list-style-type: none"> 2 nightstands Coat rack Air conditioning (hot/cold) TV 43" Sofa and table/desk
4	Bóveda	40-50m ²	429-534 sq. ft.	2 Twin or King	<ul style="list-style-type: none"> Bathtub Rainfall shower Toilet with bidet shower Heated towel rail Sink, mirror and bathroom amenities 	<ul style="list-style-type: none"> 2 nightstands 2 coat racks Air conditioning (hot/cold) TV 55" Sitting area with two sofas, table/desk
5	Aposento	32-36m ²	339-390 sq. ft.	2 Twin or King	<ul style="list-style-type: none"> Rainfall shower Toilet with bidet shower Heated towel rail Sink, mirror and bathroom amenities 	<ul style="list-style-type: none"> 2 nightstands Coat rack Air conditioning (hot/cold) TV 49" Sofa and table/desk
6	Aposento	32-36m ²	339-390 sq. ft.	2 Twin or King	<ul style="list-style-type: none"> Rainfall shower Toilet with bidet shower Heated towel rail Sink, mirror and bathroom amenities 	<ul style="list-style-type: none"> 2 nightstands Coat rack Air conditioning (hot/cold) TV 49" Sofa and table/desk
7	Aposento	32-36m ²	339-390 sq. ft.	2 Twin or King	<ul style="list-style-type: none"> Rainfall shower Toilet with bidet shower Heated towel rail 	<ul style="list-style-type: none"> 2 nightstands Coat rack Air conditioning (hot/cold)

					<ul style="list-style-type: none"> Sink, mirror and bathroom amenities 	<ul style="list-style-type: none"> TV 49" Sofa and table/desk
8	Claustro	19-21 m ²	206-223 sq. ft.	Queen	<ul style="list-style-type: none"> Rainfall shower Toilet with bidet shower Heated towel rail Sink, mirror and bathroom amenities 	<ul style="list-style-type: none"> 2 nightstands Coat rack Air conditioning (hot/cold) TV 43" Sofa
9	Claustro	19-21 m ²	206-223 sq. ft.	Queen	<ul style="list-style-type: none"> Rainfall shower Toilet with bidet shower Heated towel rail Sink, mirror and bathroom amenities 	<ul style="list-style-type: none"> 2 nightstands Coat rack Air conditioning (hot/cold) TV 43" Sofa
10	Bóveda	40-50m ²	429-534 sq. ft.	2 Twin or King	<ul style="list-style-type: none"> Bathtub Rainfall shower Toilet with bidet shower Heated towel rail Sink, mirror and bathroom amenities 	<ul style="list-style-type: none"> 2 nightstands 2 coat racks Air conditioning (hot/cold) TV 55" Sitting area with two sofas and a table/desk
11	Bóveda	40-50m ²	429-534 sq. ft.	2 Twin or King	<ul style="list-style-type: none"> Bathtub Rainfall shower Toilet with bidet shower Heated towel rail Sink, mirror and bathroom amenities 	<ul style="list-style-type: none"> 2 nightstands 2 coat racks Air conditioning (hot/cold) TV 55" Sitting area with two sofas, table/desk

reservas@cirqa.pe

+51 1 700 5106

www.cirqa.pe

Marketing Tools

www.andeanexperience.info

Social Media

FB CirqaArequipa

IG Cirqa_Arequipa