



Kantabile Afrika

PRESENTS

COVID- 19 SAFETY MEASURES

Because good times start with
good practices

Welcome to Tanzania!

At Kantabile Afrika, the health and safety of our staff and guests are our utmost priority.

We would like to share with you measures that we have put in place to ensure that you will be provided with the safest possible environment for your upcoming stay in the Serengeti.



Karibu

WELCOME!

A wide-angle photograph of a savanna landscape at sunset. A herd of wildebeest is running across the plain, kicking up a large cloud of dust that is illuminated by the golden light of the setting sun. The background shows a flat horizon with distant mountains under a clear sky.

Keeping Up with the Changing Seasons

We understand that the COVID-19 pandemic continues to evolve.

It is part of our Standard Operating Procedures to remain vigilant, by continually monitoring, assessing and reviewing the practices we have put in place and updating our approach according to the health guidance provided by the authorities.

ALTHOUGH THERE WILL BE NO
HANDSHAKES, OUR SMILES AND
ENERGIES WILL RADIATE
THROUGH AND DISSOLVE ANY
DISTANCE BETWEEN US.



ARRIVAL & WELCOME

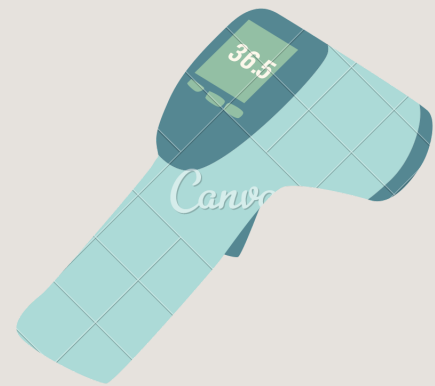
You will be briefed on our
Health & Safety Protocols.





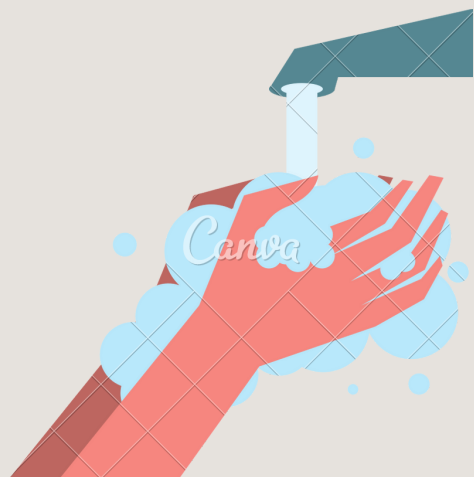
PRE-REGISTRATION

Agents will be asked to provide guests' details in advance.



TEMPERATURE CHECK

All guests will have their temperatures taken with a digital handheld scanner upon arrival.



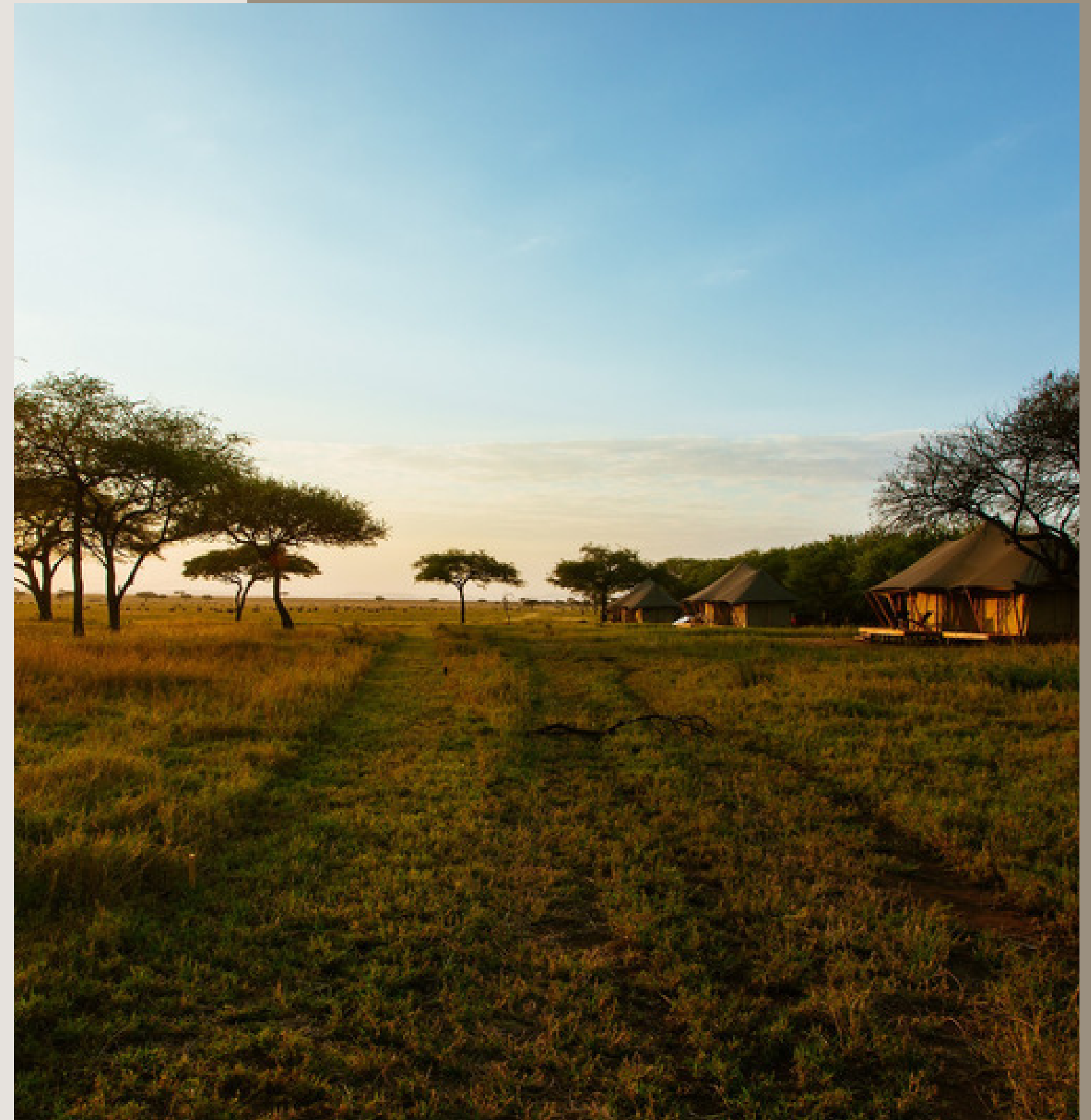
HAND WASHING

A no-touch hand washing stand with soap and water will be provided at the disembarkation point.



MASKING

All our staff will be wearing face-coverings. All guests will be offered disposable face masks.



GUEST SUITES

ENHANCED HYGIENE

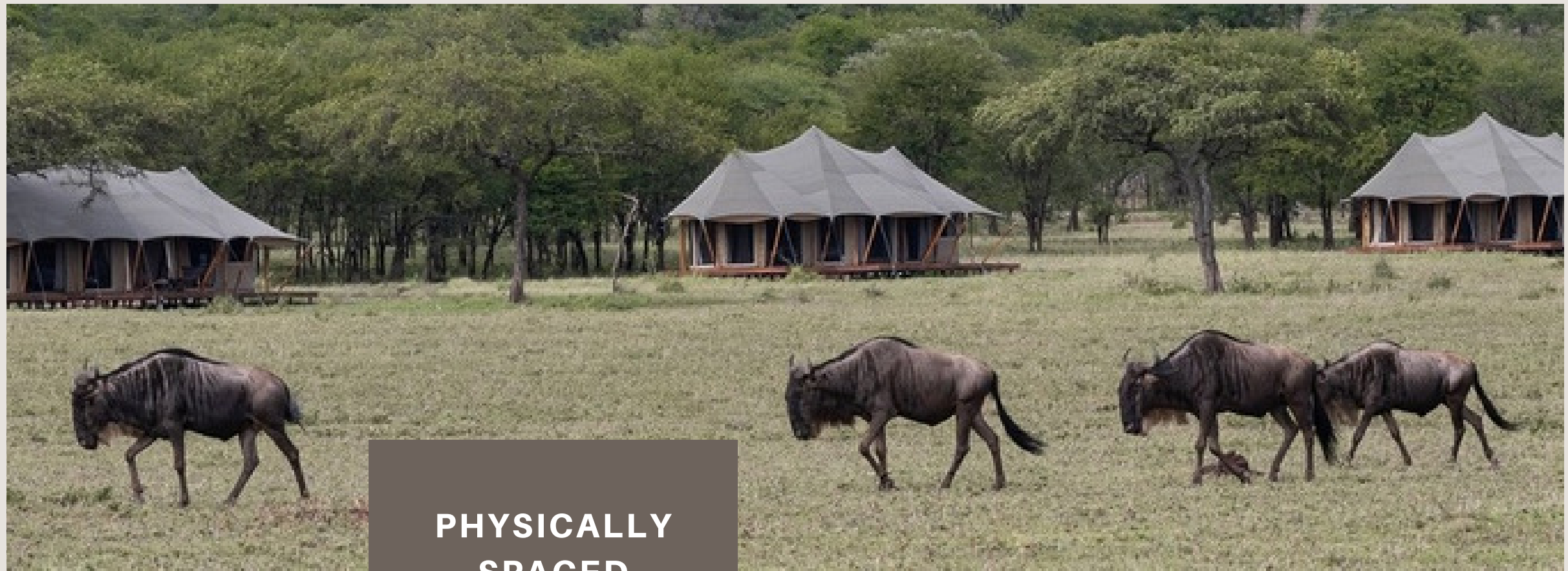


SAFETY AND COMFORT
ARE OUR TOP PRIORITIES



AMPLE DISTANCE

Our luxurious guest tents are spaced 20 to 25 metres apart from one other.



PHYSICALLY
SPACED
APART
BY DESIGN

ULTIMATE PRIVACY

Our tented suites are designed to offer guests with utmost privacy and comfort in their own space.





ENHANCED CLEANING

All rooms will be cleaned and sanitized between guest use. All high-touch surfaces have been identified and will be disinfected according to the "check list", and checked by the Camp Supervisor.

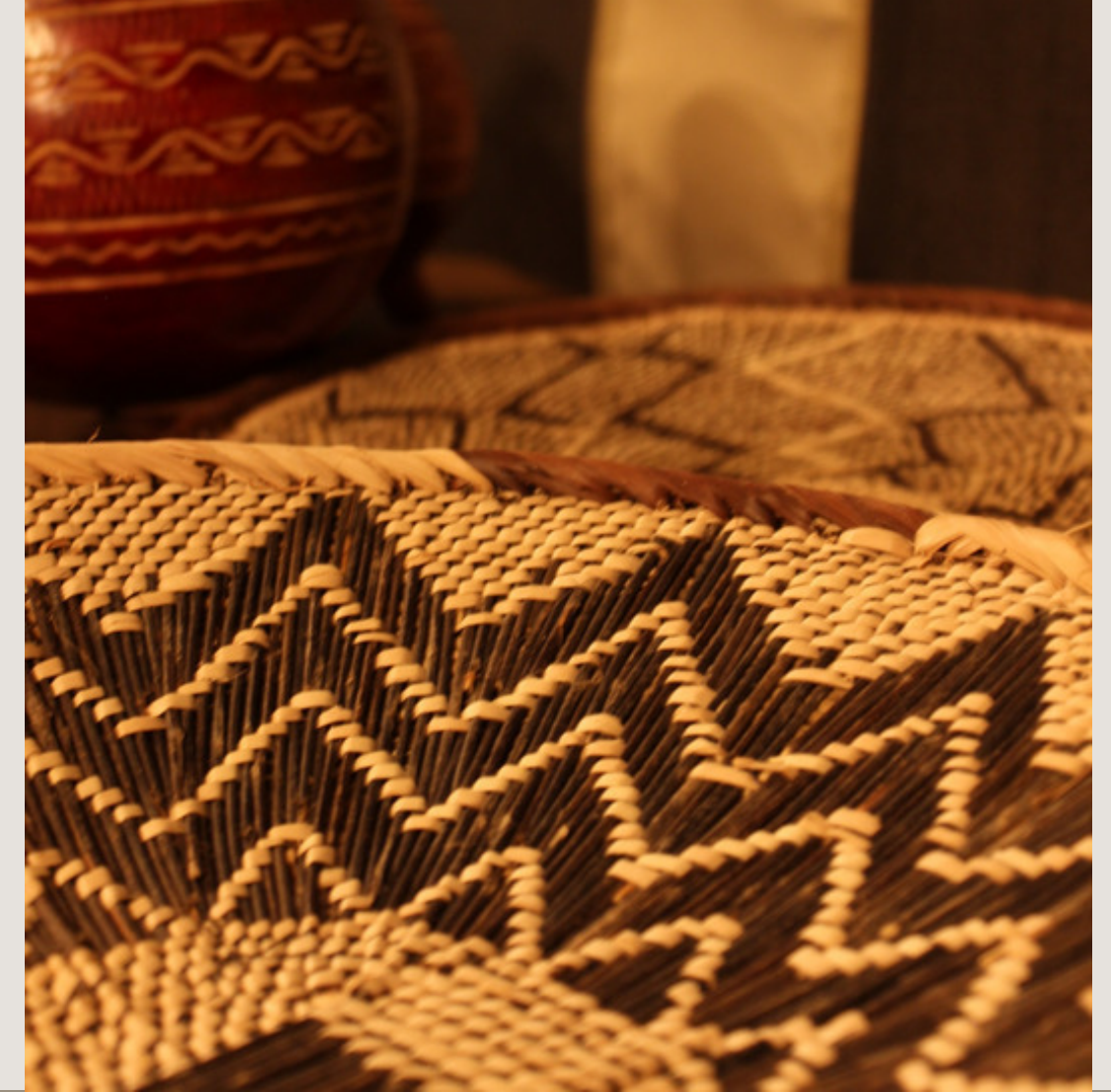
USE OF P.P.E. WHILE CLEANING

All housekeeping staff and room attendants will be wearing a disposable mask and gloves while cleaning. "Single use" cloths will be used for each room and will be disposed immediately thereof.

PERSONALIZED HOUSEKEEPING

Upon check-in, guests will be asked for their preference on whether they would like to minimize housekeeping to reduce interaction.

WE WILL NOT SHARE PERSONAL SPACE,
BUT WE WILL SHARE OUR COMMON BOND.



COMMUNAL AREAS

...where we gather but not all
at once together...

SMALL NUMBER OF GUESTS

We are blessed to have small and intimate camps which allow us to limit the number of guests to no more than 6 at a time (unless all the guests are booked on an exclusive basis).

HAND WASHING

All guests will be asked to wash their hands at the no-touch washing stand prior to entering the communal area. Hand sanitizers will be available also.

SANITIZED DAILY

The communal area will be cleaned and sanitized daily, with all high-touch surfaces disinfected according to the "check list".



DINING



WHERE EACH ELEMENT
ON THE PLATE IS IN ITS
ELEMENT AND KNOWS
ITS PLACE & DISTANCE





FOOD FOR EYES AND TUMMY

Breakfast. Lunch. Dinner. Even dessert!
All our meals are made to order and plated. We never serve "buffet style"!

DINE UNDER THE STARS

A private dining tent located away from the main area is available to offer additional dining space.

NO COMMUNAL DINING

Each group of guests will be given their own table safely distanced away from the others.

SAFE FOOD HANDLING

Our kitchen staff and waitstaff have all been provided with safe food handling training.



SAFARI

THE NATURALLY
DISTANCED TRIP YOU
CAN ENJOY IN THE
TIME OF COVID-19



Private Vehicle

We are only operating private vehicle game drives. We will not place strangers together in the same vehicle.

Deep Cleaning

The vehicle will be cleaned thoroughly and sanitized daily, between guest use. Hand sanitizer will be provided in the vehicle.

Healthy Guide

Guides would not be permitted to work if they have displayed any symptoms of cold, flu or Covid-19 within the past 14 days. They would be isolated immediately if found ill.



STAFF



THE SAFETY WARRIORS WHO WOULD MAKE YOUR
SERENGETI STAY AUTHENTIC AND COMFORTABLE



COVID-19 SAFETY TRAINING

All staff have received Covid-19 safety training and are familiar with the updated SOPs of camp operations.

SOCIAL DISTANCING

Staff will practice social distancing with other staff members and guests where possible, or wear masks.

PERSONAL HYGIENE

All staff are required to wash their hands frequently and have good personal hygiene practices.

DEDICATED MANAGER

There is a dedicated manager to liaise with all staff members so any health and safety issues could be dealt with promptly and properly.

Let the Music of Nature Heal Our Souls

We recognize the challenges the world is facing amidst the current pandemic. We, at Kantabile Afrika, remain flexible with our reservation policies, in a bid to provide you—our valued guests—with confidence in arranging your stay with us. When you are ready to travel—whenever that may be, we are committed to providing you with the highest level of service, while exercising utmost care to ensure your health and safety, as well as that of our community, would not be compromised.

We hope you feel assured about our safety measures, and embrace the lengths we are willing to go through to make sure that you will have a pleasant stay with us. Please do not hesitate to reach out should you require any assistance. We are here for you!

Stay well, and travel safely!

Kantabile Afrika

Cherero
CAMP

Aurari
CAMP

Serengeti • Tanzania

KANTABILEAFRIKA.COM

© 2021