

LODGE FACT SHEET 2024

MORE Family Collection; Lion Sands Game Reserve and Lodges Pg1 | Residences and Treehouses Pg2
Highlights; Location and Info Pg3 | Architectural Layouts Pg4 | Reference Tables Pg10

Lion Sands Ivory Lodge/Fish Eagle Residence | Tel: +27 (0)87 980 4228

Lion Sands River Lodge | Tel: +27 (0)13 735 5000

Lion Sands Tinga Lodge/Hinkwenu Residence | Tel: +27 (0)13 735 8400

Lion Sands Narina Lodge | Tel: +27 (0)13 735 8100

MORE Family Collection - Head Office/Reservations | Tel: +27 (0)11 880 9992 | Email: res@more.co.za

www.more.co.za

MORE Family Collection owns and manages a collection of luxury safari lodges, boutique hotels, and exclusive-use residences in South Africa and Zimbabwe offering seamless itineraries between our properties. Led by custodian and CEO Robert More, ours is a fourth-generation family business - our origin dates to 1933 when our great grandfather Guy Aubrey Chalkley purchased the land that Lion Sands Game Reserve was later established on. We now have four luxury lodges at Lion Sands.

Our footprint is in four unique safari reserves - Sabi Sand, Kruger, Thornybush, and Victoria Falls - and our hotels in the vicinity of two Natural Wonders of the World, namely Table Mountain and Victoria Falls. Our properties include Lion Sands Game Reserve (Mpumalanga), Marataba Luxury Lodges and Monwana Game Lodge (Limpopo), Cape Cadogan Boutique Hotel and More Quarters Neighbourhood Hotel (Cape Town), Stanley & Livingstone Boutique Hotel and Ursula's Homestead (Victoria Falls). We are committed to protecting the environment, community development, sustainability principles, and delivering on our purpose of creating life-enriching experiences for our guests.

About Lion Sands Game Reserve

Lion Sands is the only private reserve rooted in both the Sabi Sand Nature Reserve and Kruger National Park. The lodges offer exclusive traversing on private concessions. We have 10.5km of exclusive river frontage on the perennial Sabie River with our four luxury riverside lodges - Ivory, River, Tinga, and Narina. The river attracts a diversity of wildlife that guests can view from the lodge or their room.

Lion Sands conserves 12 400ha (30 600ac) of a habitat that is home to the highest and most diverse concentration of wildlife in the southern hemisphere offering exceptional game-viewing opportunities. Natural animal populations include the Big Five, along with a supporting cast of 150 mammal species and over 500 varieties of bird, and the reserve is renowned for the quality of its leopard viewing. Enjoy morning and afternoon game drives with our highly qualified field guides and trackers. Bush dinners and boma dinners will have you dining under the African stars.

The reserve includes the iconic Lion Sands Treehouse experiences (Chalkley Treehouse, Kingston Treehouse, and Tinyeleti Treehouse).

About the Lodges

Ivory Lodge is all about *inspiring deep connections* to nature and one another. This five-star premium status lodge epitomises the essence of luxury and offers utter exclusivity with just eight one-bedroom Suites that witness the passage of much of the reserve's wildlife. Each Suite is spacious with a covered deck, separate lounge with fireplace and a private plunge pool. Ivory Lodge's building style melds into the riverscape and impresses with a natural and simple beauty with many places to relax and soak up the moment. Enjoy some me time at the spa or burn off some energy in the fitness centre. Guests have the opportunity to engage with artists on the Artist Residency programme in the MORE Gallery. A dedicated Kosher kitchen is on site for our kosher guests.

River Lodge offers a *connection-rich safari* with 18 rooms and social areas like the outdoor fire deck, veranda and bar area to gather and catch up on the day. The lodge has a chic design interpretation of the traditional safari lodge with contemporary décor and limited walls that create a flow between interior and exterior with a sense of brightness and space. Wooden walkways connect the main lodge to a spa, a fitness centre and pool. There are eight Luxury Rooms, six Superior Luxury Rooms (two sets with interleading rooms), and four River Suites our most spacious and private. Each of the River Suites has a private plunge pool, with one of the River Suites ideally suited for families with two bedrooms. All our Rooms and Suites are set along the path revealing splendid river views. Kosher catering is available. Browse the MORE Gallery and turn wildlife photographs into artful souvenirs in the Creative Lab.

Tinga Lodge is the *classic safari experience*, with a focus on the senses. Nine luxury suites capture the romance of the pioneer era, in considerably more comfort. Set apart on a high bank up from the Sabie River, each Suite is privately set with its own plunge pool and deck overlooking the water making the most of a view that often sees wildlife passing through. There is also a spa sala, the main lodge with its bar lounge, library, guest pool and boma offering spaces to enjoy the company of others, or some personal quiet moments. Mack & Madi Kids' Adventure is our dedicated children's programme available at Tinga Lodge and offers a wide variety of activities on site that keep the young ones entertained. There is a dedicated playroom for arts & crafts, baking and more. Special scavenger hunts on game drives and fun 'sundowner' stops of milkshakes or hot chocolate, will create some long-lasting memories.

Narina Lodge is a place *nurturing natural beauty*. Perched on stilts under a canopy of 100-year-old trees just up from the water, Narina Lodge offers guests a wonderful sense of remoteness and peace, and panoramic views of the Sabie River from the main lodge or one of the nine private luxury suites. Like the Narina Trogon bird after which it is named, the lodge is astonishingly beautiful, yet blends unassumingly into the natural environment. The spa has a generous view of the passing wildlife as guests enjoy luxurious treatments. Those feeling energetic and keen to keep to their training schedule can head over to the fitness centre. Our Creative Lab is available for photographers to turn their images into works of art.

About the Residences

Fish Eagle Residence is located at Ivory Lodge. This self-contained residence comes with a personal chef, residence butler, as well as a dedicated field guide team and safari vehicle for a private game viewing experience. The Residence comprises two private rooms, each with an en-suite open plan bathroom, as well as outdoor shower area. The Residence has an open living space with a fully equipped interactive kitchen, lounge, study, and dining area. The expansive deck and covered patio walk onto a 10-metre-long lap pool, while a private fire deck and star jetty overlook the Sabie River for quiet enjoyment of the natural environment. Guests also have a private spa (with double treatment room) and fitness centre.

Hinkwenu Residence is located at Tinga Lodge. This stand-alone Residence in the bush makes the wildlife experience exclusive with its own hospitality and field guide teams, and safari vehicle for a more personal experience. The two spacious bedrooms have en-suite bathrooms, that include an outdoor shower area. The private pool and furnished deck ensure guests have ultimate privacy whilst relaxing. Mack & Madi Kids' Adventure programme is also available for the young ones.

About Lion Sands Treehouses

Million-star **Chalkley and Kingston** (on the Sabi Sand side) and **Tinyeleti** (on the Kruger Park side) are the ultimate bush bedrooms. Here romantics, adventurers, and solitude seekers alike can discover the magic of a night out in Africa – in complete luxury. Each of the Treehouses are unique in character. Chalkley Treehouse, the original adventure, has panoramic views of the open plains. Tinyeleti Treehouse offers a starry riverside retreat. Kingston Treehouse is the ultimate luxury escape with a view over the treetops. All our treehouses have bathroom facilities with hot running water.

Guests arrive at sunset for sundowners followed by a picnic dinner and can spend the dusk hours watching animals wander past (at a safe distance and with a bird's eye view), then fall asleep counting shooting stars. A field guide is always a radio call away.

The Treehouse Experience is booked in conjunction with accommodation at the lodge, with the room available for returning to at any point.

Highlights

- Lion Sands Kruger National Park is one of only seven private park concessions and protects pristine wilderness, as well as sites of cultural and historical significance
- Lion Sands Sabi Sand forms part of Sabi Sand Nature Reserve – the oldest private nature reserve in South Africa, established in 1948, with our grandfather as one of the founders, and still in our custodianship four generations later, instilling a legacy of community and conservation
- Non-migratory species so guaranteed safari experiences all year round
- The perennial Sabie River is renowned for attracting a diversity of wildlife and we have front row seats
- Exceptional, FGASA-accredited MORE Field Guides and highly knowledgeable Trackers
- Only six people per safari vehicle
- Four distinct lodges that suit guest's individual preferences
- Ivory Lodge is one of only 11 properties in the country to be awarded 5 Star Premium status by the Tourism Grading Council of South Africa
- The unique experiences of a night in our iconic Lion Sands Treehouses (Chalkley, Kingston, and Tinyeleti)
- All dietary needs are accommodated - Vegan, Vegetarian, Reducetarian, Halal etc - and there are Kosher catering options at Ivory Lodge and River Lodge
- Artist Residency for renowned and upcoming South African artists - a gallery and studio are situated within Ivory Lodge where artists show case their existing and new creations whilst sharing their creative process with guests
- Mack & Madi Kids' Adventure at Tinga Lodge and Hinkwenu Residence offers a wide variety of activities on site that keep children entertained and encourages them to discover, learn, create, and express themselves
- Creative Labs at River Lodge and Narina Lodge for professional and novice wildlife photographers - our photographic specialist helps transform photos into canvas artworks for the ultimate keepsake
- Voted amongst the best in the Condé Nast Traveller Readers' Choice Awards and in the Travel & Leisure's Top 100 Hotels in the World!
- All four lodges are within 12km (7mi) of Skukuza Airport and easily accessible by road from Johannesburg and Cape Town
- Flight connections from Nelspruit to Victoria Falls and Mozambique
- Seamless itineraries can be arranged between the MORE Family Collection properties

Location

Lion Sands Ivory Lodge and River Lodge: are located in the south of the private Sabi Sand Game Reserve, which protects 65 000ha (160 600ac) of, arguably, Africa's most pristine Big Five territory.

GPS co-ordinates: Ivory Lodge 24°58'24.1"S | 31°31'46.5"E; River Lodge 24°58'16.9"S | 31°31'55.4"E

Lion Sands Tinga Lodge and Narina Lodge: are situated in the south of the Kruger National Park which, covering nearly two million hectares, is home to more mammal species than any other game reserve on the continent.

GPS co-ordinates: Narina Lodge 24°57'43.41"S | 31°33'46.51"E; Tinga Lodge 24°58'16.94"S | 31°35'0.54"E

Weather

The average maximum temperatures range from 24°C/75°F in July to 33°C/90°F in January, with the lowest average minimum occurring in July at 8°C/46°F • The average annual rainfall is 350mm (14in), most of which occurs during midsummer (December – February) • Rain is usually in the form of thundershowers, where a downpour is experienced, very seldom lasting longer than a few hours

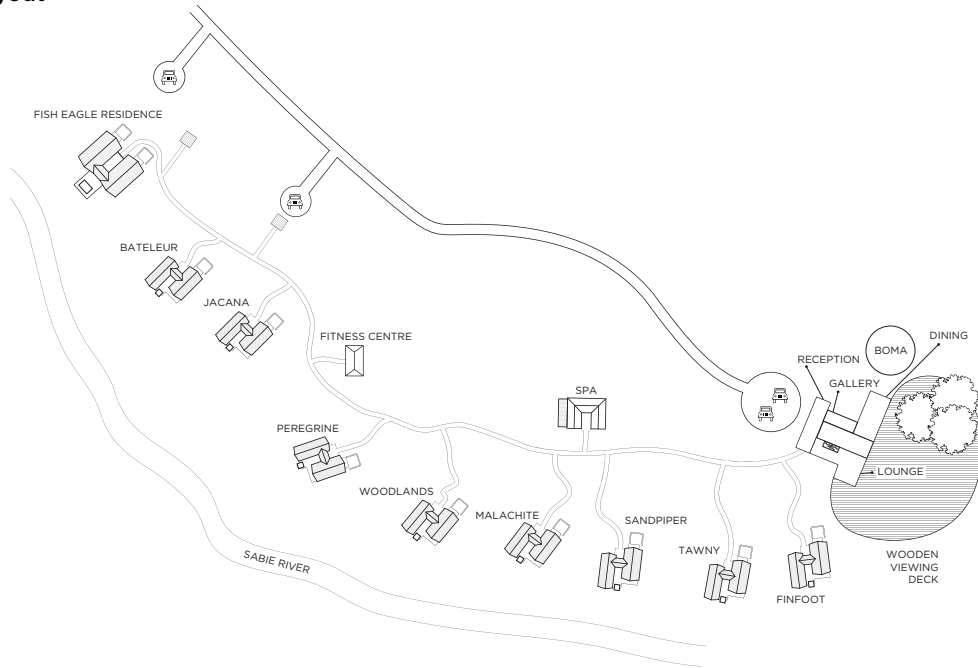
Best Time to Travel

A year-round safari destination • The animals in Lion Sands Game Reserve are non-migratory, and variation in the safari experience is season-, rather than location-, related • The best period for birdwatching is from October to April

Health Info: Malaria

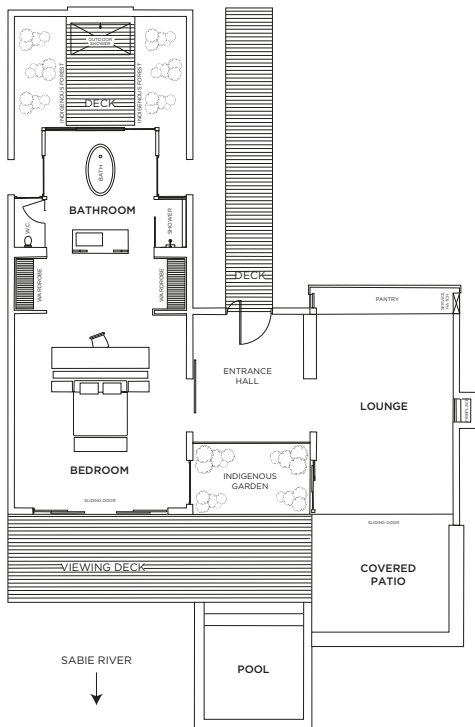
Lion Sands Game Reserve is located in a moderate-risk malaria area, and we urge guests to consult their doctors about malarial prophylactics before visiting.

Ivory Lodge Layout



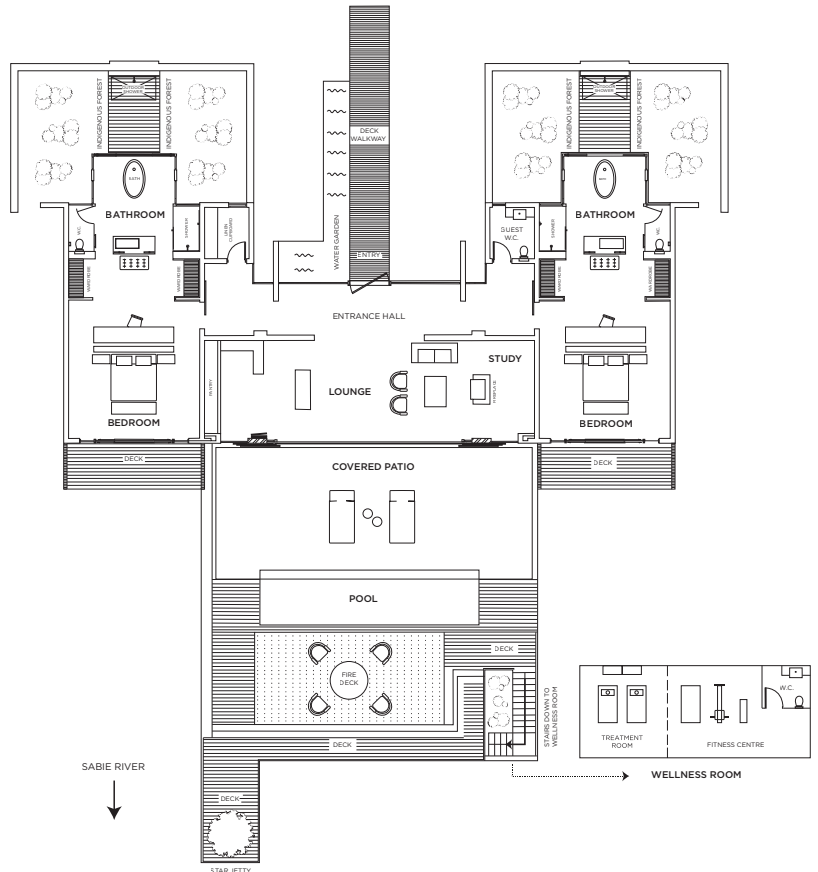
Ivory Lodge One-Bedroom Suite Layout

Suite - 1 561ft² | 145m²
 Viewing deck - 301ft² | 28m²
 Total - 1 862ft² | 173m²

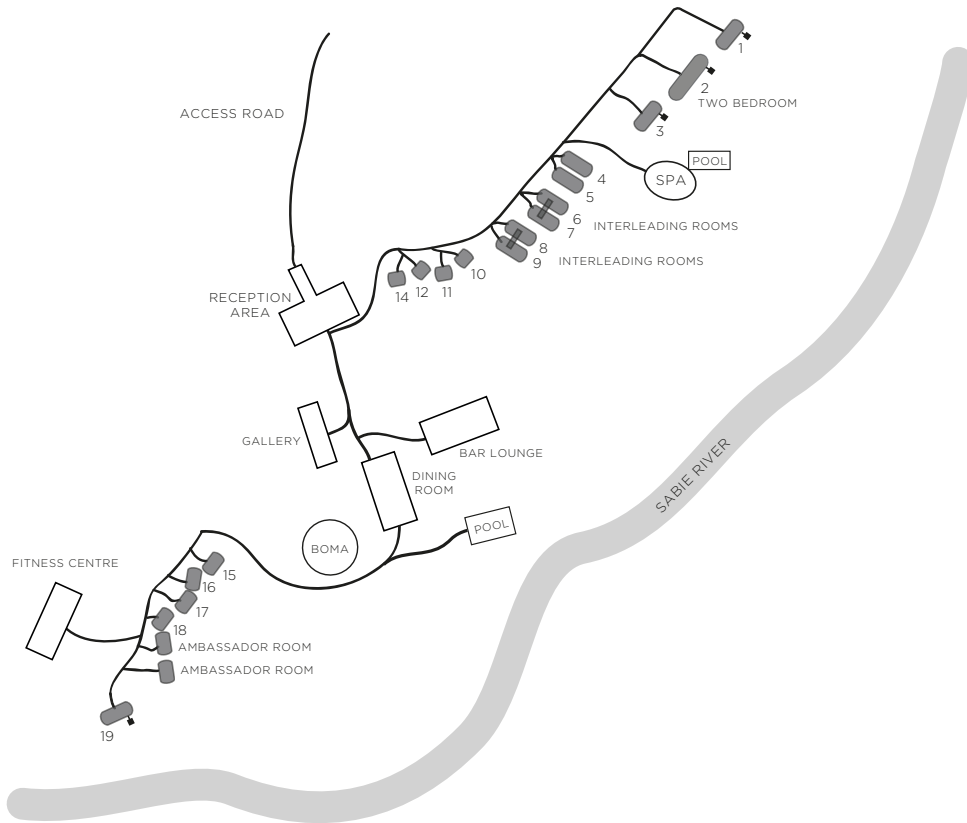


Ivory Lodge Two-Bedroom Fish Eagle Residence Layout

Suite - 3 498ft² | 325m²
 Viewing deck - 592ft² | 55m²
 Wellness room - 646ft² | 60m²
 Total - 4 736ft² | 440m²



River Lodge Layout

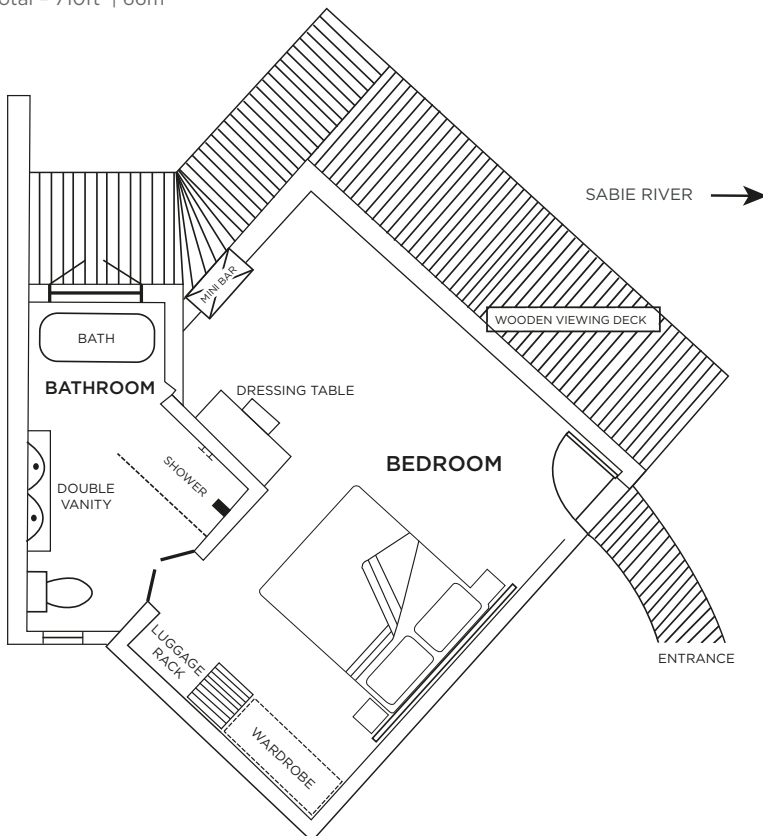


River Lodge Luxury Room Layout

Room - 581ft² | 54m²

Exterior - 129ft² | 12m²

Total - 710ft² | 66m²

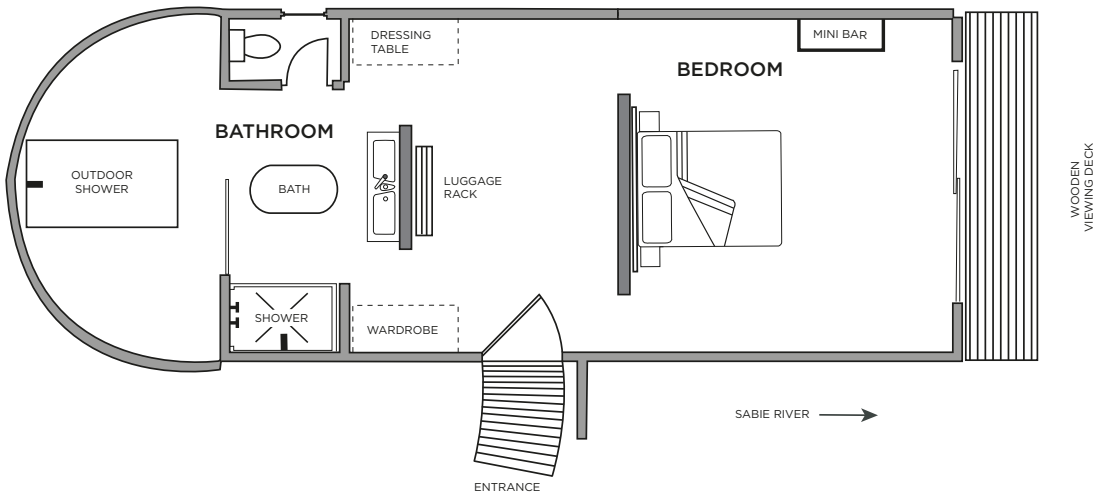


**River Lodge
Superior Luxury Room Layout**

Room - 840ft² | 78m²

Viewing deck - 215ft² | 20m²

Total - 1 055ft² | 98m²

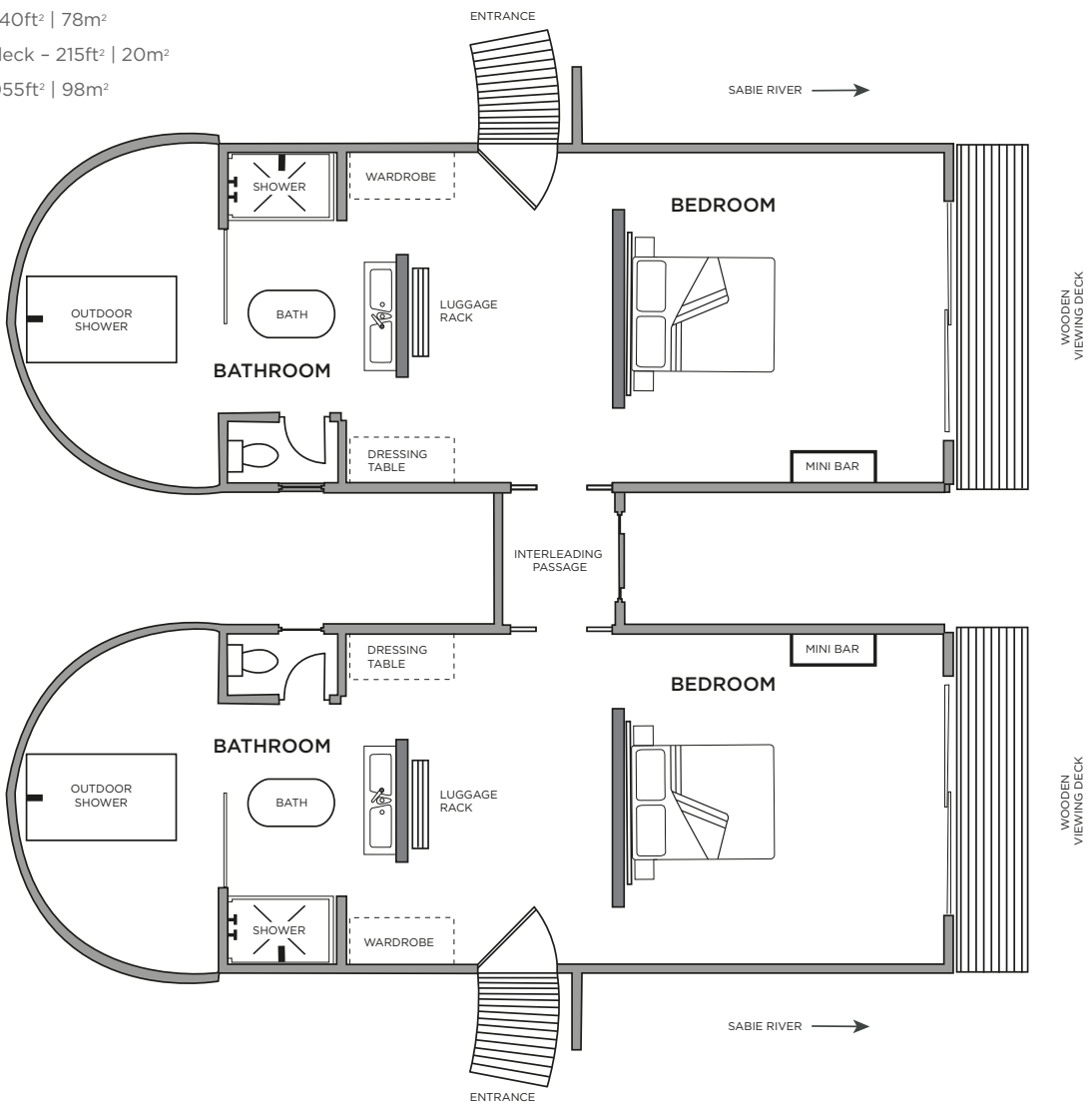


**River Lodge
Interleading Superior Luxury Room Layout**

Room - 840ft² | 78m²

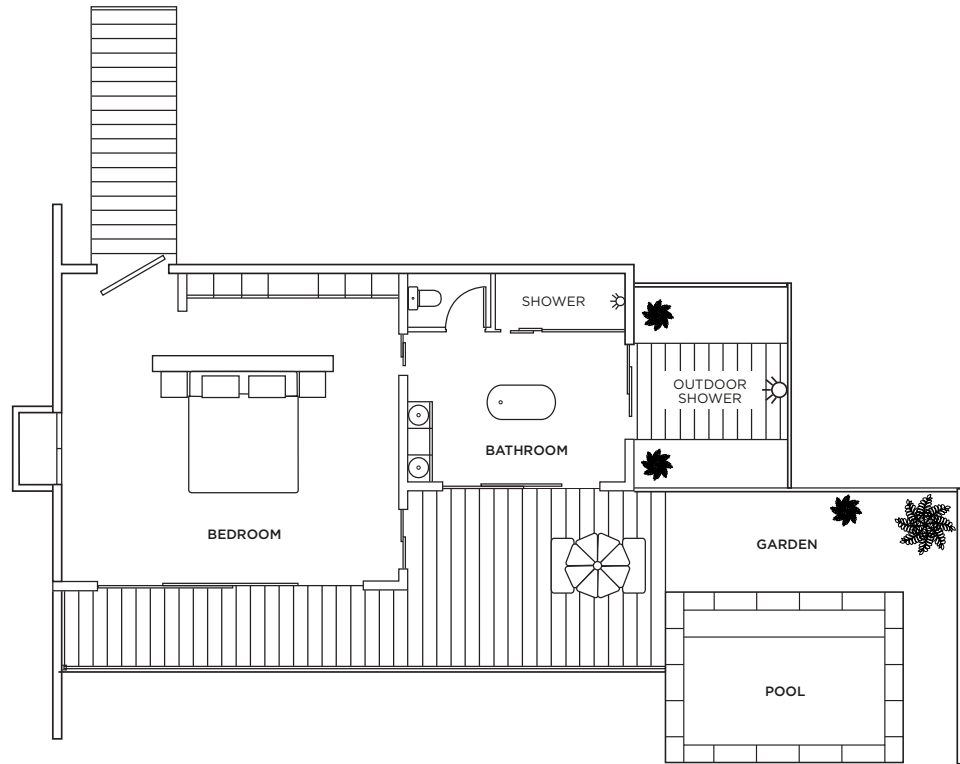
Viewing deck - 215ft² | 20m²

Total - 1 055ft² | 98m²



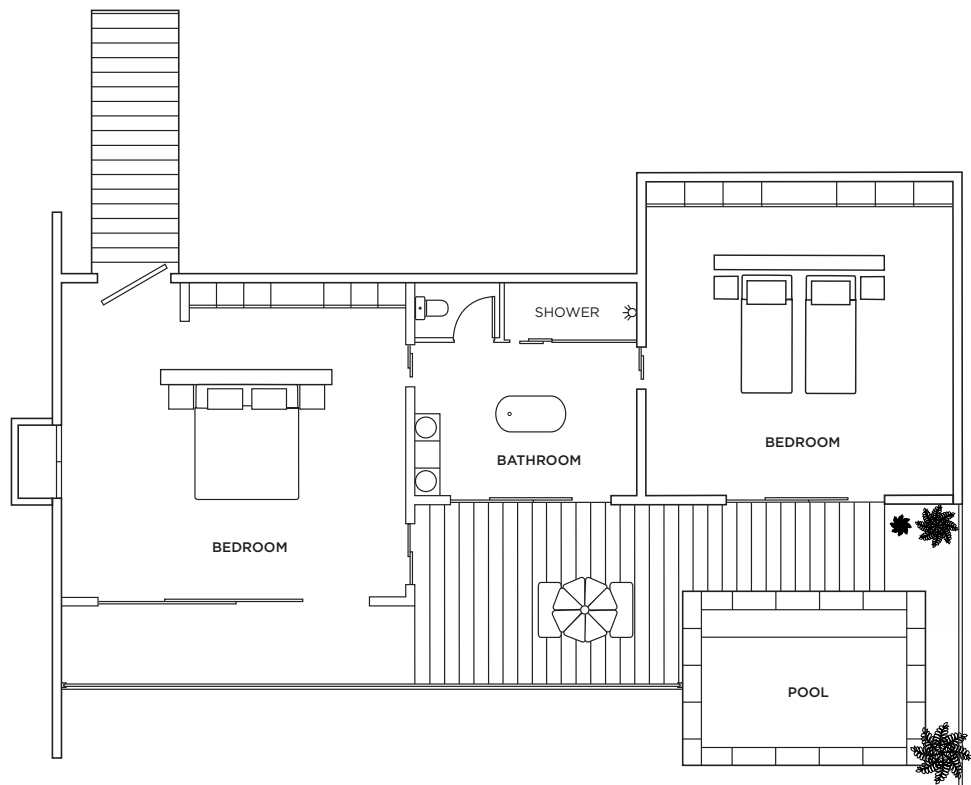
River Lodge
One-Bedroom River Suite Layout

Suite - 883ft² | 82m²
 Outside shower - 129ft² | 12m²
 Viewing deck - 301ft² | 35m²
 Pool - 140ft² | 13m²
 Total - 1 453ft² | 142m²

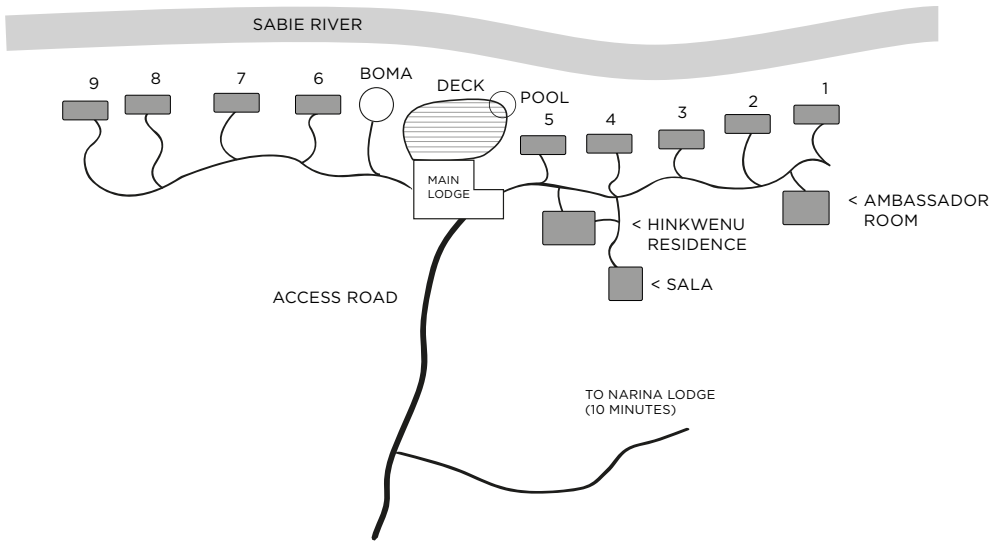


River Lodge
Two-Bedroom Family River Suite Layout

Suite - 1 324ft² | 123m²
 Viewing deck - 452ft² | 42m²
 Pool - 140ft² | 13m²
 Total - 2 058ft² | 178m²

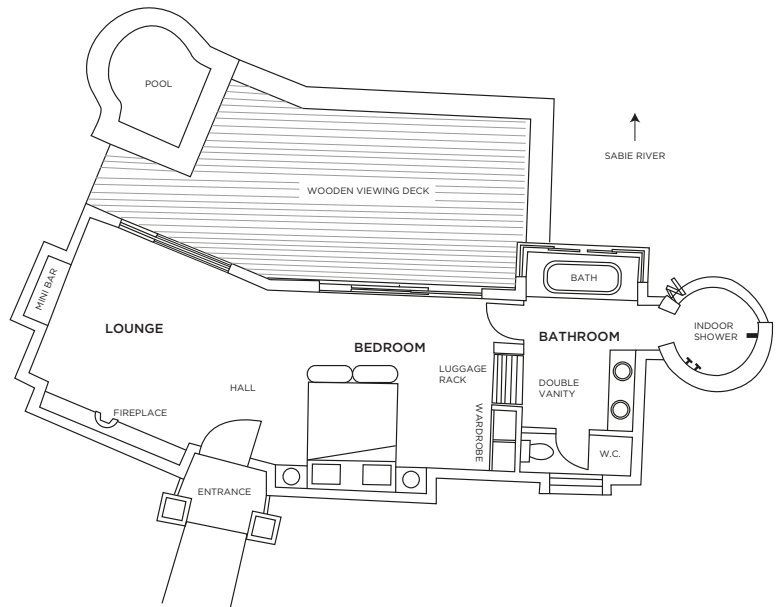


Tinga Lodge Layout



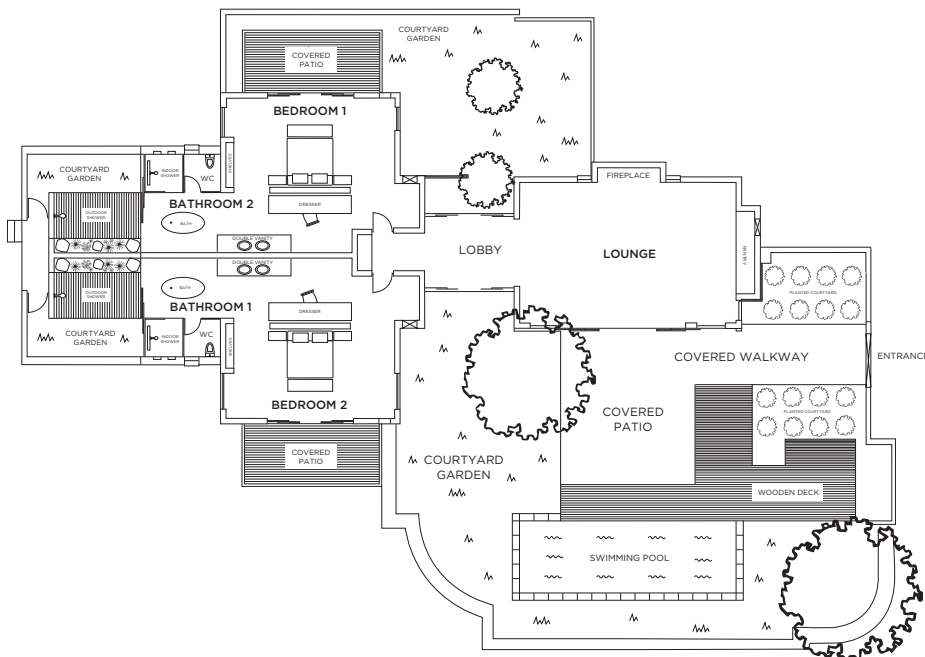
Tinga Lodge Suite Layout

Interior - 861ft² | 80m²
 Exterior - 484ft² | 45m²
 Total - 1 345ft² | 125m²

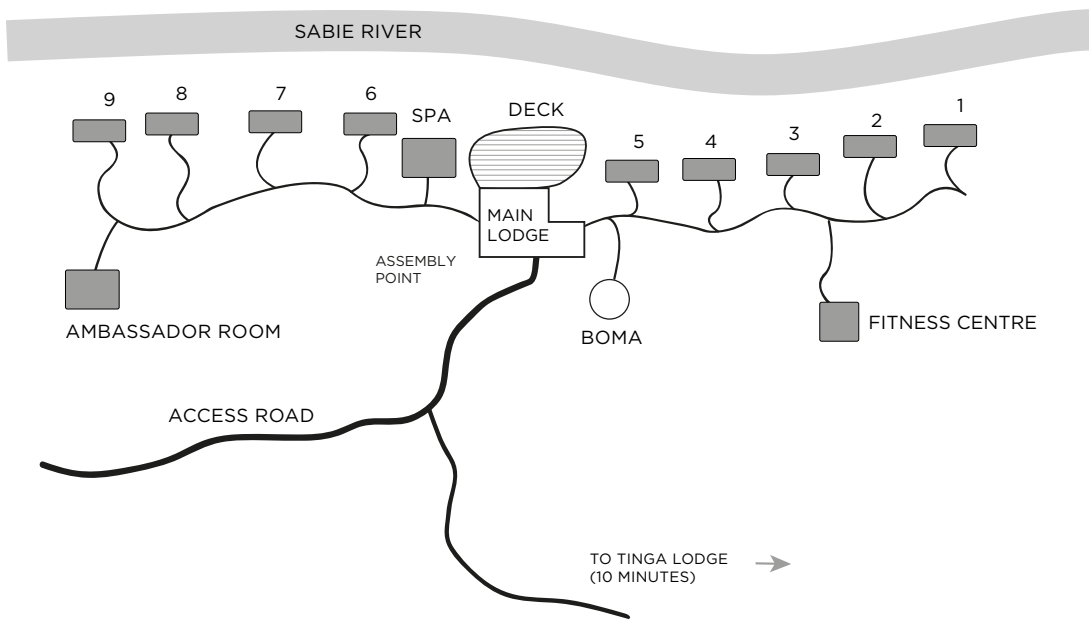


Tinga Lodge Two-Bedroom Hinkwenu Residence Layout

Interior - 2 368ft² | 220m²
 Exterior - 1 345ft² | 125m²
 Total - 3 713ft² | 345m²



Narina Lodge Layout

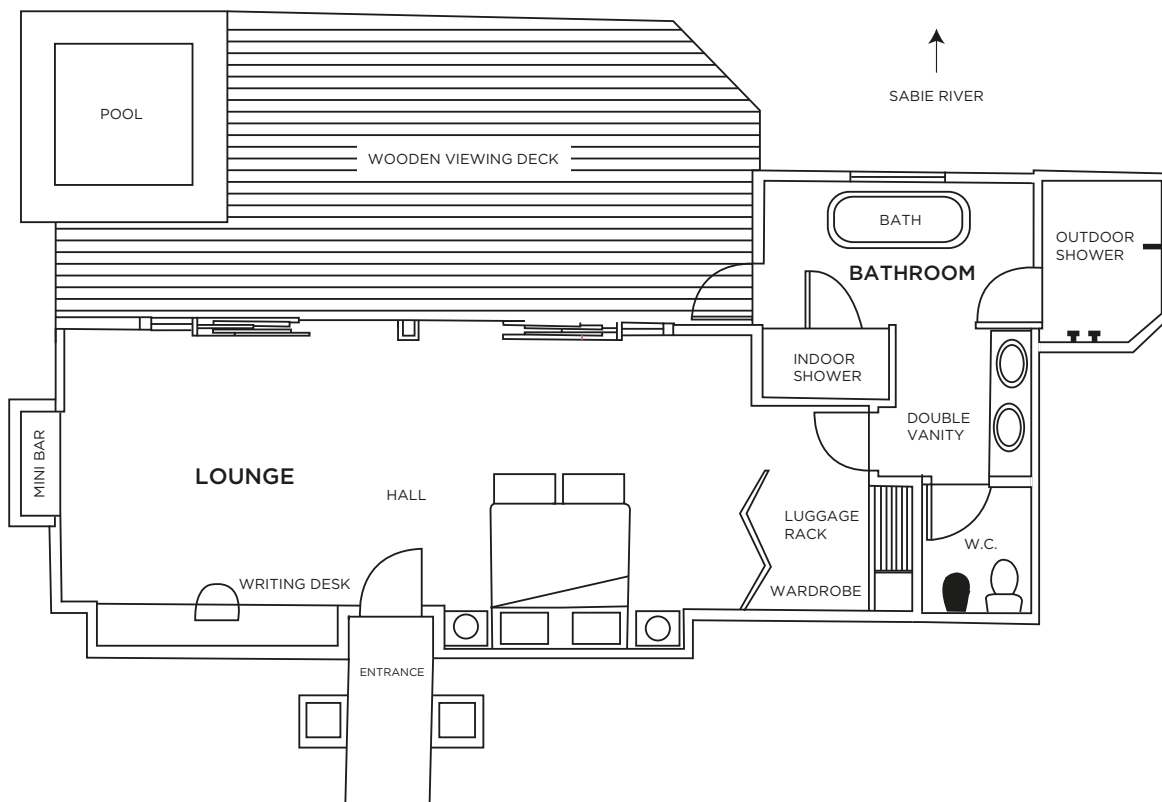


Narina Lodge Suite Layout

Interior - 861ft² | 80m²

Exterior - 484ft² | 45m²

Total - 1 345ft² | 125m²



Reference Table - Ivory Lodge and River Lodge

Reference	Ivory Lodge	River Lodge
Suites	8 Suites 1 Fish Eagle Residence	18 Rooms: 8 Luxury (L) 6 Superior Luxury (SL) - incl. 2 sets of interleading rooms 4 River Suites (RS) - incl. 1 Family River Suite (FRS)
Size of suites	Suites: 1 561ft ² /145m ² Fish Eagle Residence: 3 498ft ² /325m ²	L: 581ft ² /54m ² SL: 840ft ² /78m ² RS: 883ft ² /82m ² FRS: 1 324ft ² /123m ²
Guests	20	38
Children	Yes: Suites (>10 years) Fish Eagle Residence (all ages)	Yes (>10 years)
Children's rate	10 to 15 years (50% of adult pps rate if sharing with an adult)	10 to 15 years (50% of adult pps rate if sharing with an adult)
Children on safari	Private game drives (all ages) Twice-daily game drives (>10 years)	Yes (>10 years)
Children activities	Yes	Yes
Childminding	Yes (additional cost)	Yes (additional cost)
Triple rooms	Fish Eagle Residence (x2 rooms)	No
Single traveller supplement	Yes (50% supplement)	Yes (50% supplement)
King bed convertible to ¾ beds	Yes	Yes
Treehouses	Chalkley Treehouse and Kingston Treehouse	
Central guest pool	No	Yes
Private plunge pool	Yes	Yes (River Suites)
Air conditioning	Yes	Yes
Fireplace	Yes	Yes (guest areas)
Room fans	Yes	Yes
Mosquito nets	Yes	Yes
Outdoor shower	Yes	Yes (Superior Luxury Rooms and River Suites)
Indoor showers	Yes	Yes
Separate WC	Yes	Yes (Luxury Rooms and River Suites)
Free Wi-Fi	Yes (all areas)	Yes (all areas)
Satellite television	No	Yes (guest area)
In-room telephone	Yes (direct dial)	Yes (direct dial)
Mobile coverage	Fair: 40%	Fair: 40%
In-room safe	Yes	Yes
Personal bar	Yes	Yes
Hairdryer	Yes	Yes
Laundry service	Yes (included)	Yes (additional cost)
Conference facilities	No	Yes
Spa	Yes	Yes
Fitness Centre	Yes	Yes
Suitable for disabled guests	No	Yes (with assistance)
Distance between rooms	20-25m/60-75ft	0-8m/0-25ft
Closest airport	Skukuza Airport (25 minutes away)	Skukuza Airport (25 minutes away)
Helipad	Yes (24°58'2.22"S 31°31'30.20"E)	
Guests per open safari vehicle	6	6
Private open safari vehicle	Fish Eagle Residence (included) Suites (additional cost, subject to availability)	No
Languages of field rangers	English, Afrikaans, Shangaan, Zulu	English, Afrikaans, Shangaan
Gratuities recommendation	ZAR750* per room per day Fish Eagle Residence ZAR1500* per day *Specific allocations clarified on request	
Kosher dining	Yes (dedicated Kosher kitchen). Booked with prior notice and at an additional cost	Yes (self-supervised). Booked with prior notice and at an additional cost
Power	220V AC	220V AC
Credit cards	Mastercard, Visa, Amex	Mastercard, Visa, Amex
Cheques	Not accepted	Not accepted

Reference Table – Tinga Lodge and Narina Lodge

Reference	Tinga Lodge	Narina Lodge
Suites	9 Suites 1 Hinkwenu Residence	9 Suites
Size of suites	Suites: 861ft ² /80m ² Hinkwenu Residence: 2 368ft ² /220m ²	861ft ² /80m ²
Guests	24	18
Children	Yes: Suites (>6 years) Hinkwenu Residence (all ages)	Yes (>16 years)
Children's rate	6 to 15 years (50% of adult pps rate if sharing with an adult)	No
Children on safari	Twice-daily game drives (>6 years)	No
Children activities	Yes	No
Childminding	Yes (additional cost)	No
Triple rooms	2 Suites and Hinkwenu Residence	2 Suites
Single traveller supplement	Yes (50% supplement)	Yes (50% supplement)
King bed convertible to ¾ beds	Yes	Yes
Treehouse	Tinyeleti Treehouse	
Central guest pool	Yes	No
Private plunge pool	Yes	Yes
Air conditioning	Yes	Yes
Fireplace	Yes (guest areas) Hinkwenu Residence	Yes (guest areas)
Room fans	Yes	Yes
Mosquito nets	Yes	Yes
Outdoor shower	Yes	Yes
Indoor showers	Yes	Yes
Separate WC	Yes	Yes
Free Wi-Fi	Yes (all areas)	Yes (all areas)
Satellite television	Yes (guest area)	Yes (guest area)
In-room telephone	Yes (direct dial)	Yes (direct dial)
Mobile coverage	Good: 80%	Fair: 40%
In-room safe	Yes	Yes
Personal bar	Yes	Yes
Hairdryer	Yes	Yes
Laundry service	Yes (additional cost)	Yes (additional cost)
Conference facilities	No	No
Spa	Yes (Spa sala)	Yes
Fitness Centre	No	No
Suitable for disabled guests	Yes (with assistance)	No
Distance between rooms	33–49ft/10–15m	33–49ft/10–15m
Closest airport	Skukuza Airport (5 minutes away)	Skukuza Airport (15 minutes away)
Helipad	Yes (24°58'7.64"S 31°35'33.92"E)	
Guests per open safari vehicle	6	6
Private open safari vehicle	Hinkwenu Residence (included) Suites (additional cost, subject to availability)	Suites (additional cost, subject to availability)
Languages of field rangers	English, Afrikaans, Shangaan, Zulu	English, Afrikaans, Shangaan, Zulu
Gratuity recommendation	ZAR750* per room per day Hinkwenu Residence ZAR1500* per day *Specific allocations clarified on request	
Power	220V AC	220V AC
Credit cards	Mastercard, Visa, Amex	Mastercard, Visa, Amex
Cheques	Not accepted	Not accepted

Reference Table - Treehouse Circuit

Reference	Chalkley Treehouse	Kingston Treehouse	Tinyeleti Treehouse
Location	Sabi Sand side	Sabi Sand side	Kruger Park side
Number of guests	2 adults	2 adults and 2 children (10 to 14 years)	2 adults and 2 children (10 to 14 years)
Stargazing	Yes, countless	Yes, countless	Yes, countless
Shower	Yes	Yes	Yes
Vanity	Single	Double	Double
Radio comms and cell signal	Yes	Yes	Yes
Wi-Fi	You must be joking!	You must be joking!	You must be joking!
Safety features	Single door, secure stairway, two-way radio contact	Single door, drawbridge, two-way radio contact	Double safety door, two-way radio contact
Season	Year-round (weather dependant)	Year-round	Year-round (weather dependant)
View	Onto the open savannah	Out over the treetops	Across to the Sabie River
Size in decking	431ft ² /40m ²	646ft ² /60m ²	538ft ² /50m ²
Height above ground	26ft/8m	33ft/10m	26ft/8m
Dining	Gourmet picnic basket and selected drinks from our beverage list	Gourmet picnic basket and selected drinks from our beverage list	Gourmet picnic basket and selected drinks from our beverage list