

WHALES & WILDLIFE

De Hoop Nature Reserve is an important destination for Southern Right Whales. Females and their calves swim in the clear waters, while males put on spectacular displays. These endangered mammals ensure that the De Hoop Reserve in South Africa is one of the world's best land based whale-watching areas. As a marine reserve and World Heritage Site, De Hoop guarantees a safe nursery for these pods of visiting cetaceans. Season runs from: End of May through to November. In season 500-600 whales will call De Hoop home. Sightings of 50-75 during height of season.



Mammals - over 86 species - most common: eland, bontebok, baboon, Cape mountain zebra, grey rhebuck, duiker, steenbok etc.

Marine life - Southern Right Whales, dolphins and seals occur in the waters off the coast.

Birds - over 259 species - some of which include: Cape griffon vultures, ostriches, African oyster catcher and many more.

RESTAURANT

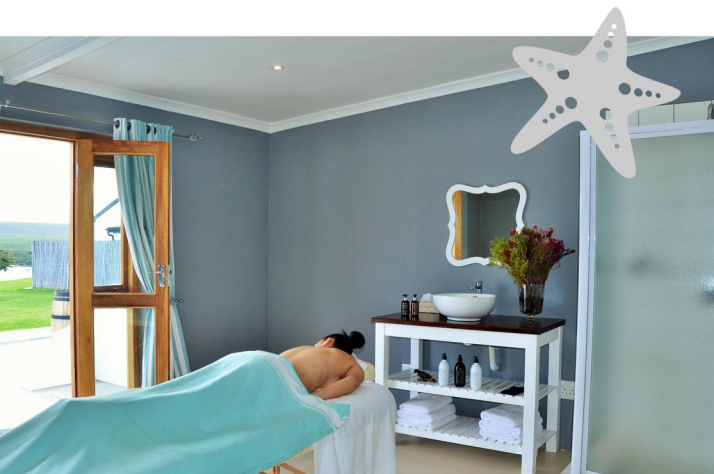
The Restaurant at the Opstal camp is open for breakfast, lunch and dinner and can also produce picnic hampers for guests. Join us from 08h00-21h00.

WEDDINGS, EVENTS & TEAMS

De Hoop provides a beautiful backdrop for weddings, family reunions, special events and team builds. 'Build' your own experience - from cooking to art; or incorporate our many on site activities. Ask us about pre-booking an aerial whale viewing experience!

SPA @ DE HOOP

A place where one can be in a relaxed state of mind, enabling clarity of thought, which in turns enhances beauty.



ACTIVITIES AT DE HOOP

GUIDED BIRD WALK

A wonderful walking experience with a qualified field guide focused on the identification and behaviour of the prolific birdlife found in De Hoop Nature Reserve. Length of walk dependent on fitness levels of participants. Depart from the meeting tree at the Opstal at 6am October - March and 8am April - September.

INTERPRETATIVE MARINE WALK

(duration +-2 hours) A walking trail exploring coastal rock pools and sandy beaches while a qualified guide points out interesting marine life forms. Also a great way to experience the Southern Right Whales in the bay between June and December. Depart an hour before low tide from Koppie Alleen Parking Area. Times of daily low tide should be confirmed at Reception the day before.

GUIDED MOUNTAIN BIKE TRAIL

(duration 2 - 3 hours) Get the chance to cycle among herds of eland, bontebok and other game species with a qualified field guide who will share his knowledge of less obvious natural and historical aspects of De Hoop. Depart from Activity Room at various times during the day. To be booked and confirmed at Reception.

GUIDED ECO BOAT CRUISE

(duration 1.5 - 2 hour)

Explore the Vlei and enjoy bird, game, otter and even porcupine sightings with our eco cruise experience. Cruises are held daily at 8am and 5pm during summer or can be booked by arrangement. Morning cruises include tea, coffee as well as pastries and croissants with jam and cheese. Guests opting for the evening cruise can enjoy house wines, local beers, juices and savoury snacks. Please note that this excludes spirits and speciality wines.

STARGAZING & STAR IDENTIFICATION

(duration 1 hour) Experience the magnificent stars and constellations that the clear De Hoop night sky has to offer. Learn about the various star signs and other interesting facts about the sky. Meet at the Fig Tree Restaurant at 8pm in winter and 10pm in summer. Times may change according to season and weather conditions. Please discuss and confirm with the guide



WELCOME TO DE HOOP -WHALE HEAVEN-

The De Hoop Reserve is situated just three hours' drive from Cape Town on the world renowned Garden and Whale Routes.

It is in the Overberg region near the southern tip of Africa and can be approached from either Bredasdorp or Swellendam.

The 36 000 hectares of De Hoop conservation area is a World Heritage Site comprising rich biodiversity and over 70 kilometres of pristine coastline.

A 19 km vlei stretches across the reserve, which is on the Ramsar list of Wetlands of International Importance.

The De Hoop Nature Reserve is situated east of Bredasdorp. The last 60 km of either route is along gravel roads and takes an hour to travel.

www.dehoopcollection.co.za
Facebook: DeHoopCollection
Twitter: @DeHoopReserve
Bookings:
021 422 4522
res@dehoopcollection.co.za

ACCOMMODATION



GREAT FOR FRIENDS & FAMILY



DE HOOP VILLAGE (9 Units)
Sleeps 6
(1x Double; 1 x Twin; 1x Bunk)
1 Bathroom
(Shower, toilet, towels, amenities)
BBQ Area



OPSTAL HOUSES (3 Units)
Sleeps 6
(1x Double; 2 x Twin)
1 Bathroom
(Bath, shower, toilet, towels, amenities)
BBQ Area



EQUIPPED COTTAGES (7 Units)
4 x Sleeps 4 (1x Double; 1x Twin)
2 x Sleeps 4 (2x Twins)
1 x Sleeps 6 (1 Double, 2 x Twin)
1 Bathroom
(Shower, toilet, towels, amenities)
BBQ Area



VLEI COTTAGES (3 Units)
Sleeps 4
(1x Double; 1x Twin)
1 Bathroom
(Shower, toilet, towels, amenities)
BBQ Area

RONDAWELS



CAMPSITE RONDAWELS
Sleeps 2 (1x Twin or double - advise requirement)
Communal Bathroom

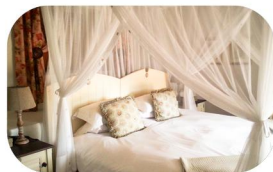
ROMANTIC SUITES



OPSTAL MANOR HOUSE
Sleeps 6
(1x King; 2 x Twin)
3 Bathrooms
(En suite shower, bath, toilet, towels, amenities)



OPSTAL VLEI SUITE
Sleeps 2 (1x King)
1 Bathrooms
(Shower, bath, toilet, towels, amenities)



OPSTAL STABLE SUITE
Sleeps 2 (1x King)
1 Bathroom
(Shower, bath, toilet, towels, amenities)



DASSIE SUITE
Sleeps 2 (1x King)
1 Bathroom
(Shower, bath, toilet, towels, amenities)



OTTER SUITES (3 Units)
Sleeps 2 (1x King)
1 Bathroom
(Bath, toilet, towels, amenities)



FIGTREE SUITE
Sleeps 2 (1x King)
1 Bathroom
(Shower, bath, toilet, towels, amenities)



CLOETE SUITES
Each Suite Sleeps 2 (4 Suites)
(1 x King)
1 Bathroom
(Bath, shower, toilet, towels, amenities)



CLOETE COTTAGE
Sleeps 2
(1x King)
1 Bathroom
(Bath, shower, toilet, towels, amenities)

SOMETHING DIFFERENT



MELKKAMER VLEI COTTAGE
Sleeps 8
(2x Double; 2x Twin)
2 Bathrooms
(Shower, toilet, towels, amenities)
BBQ Area



MELKKAMER FOREMANS COTTAGE
Sleeps 6
(1x Double; 2x Twin)
1 Bathroom
(Bath, outside shower, toilet, towels, amenities)
BBQ Area



MELKKAMER MANOR HOUSE
Sleeps 8
(2x Double; 2 x Twin)
4 En Suite Bathrooms
(Shower, bath, toilet, towels, amenities)

