

AN ELEVATED PERSONAL
SANCTUARY



— KRUGER —

S H A L A T I

THE TRAIN ON THE BRIDGE

A leopard is walking from left to right across a savanna landscape during sunset. The leopard's fur is illuminated by the warm, golden light of the setting sun, highlighting its distinctive spotted pattern. The background consists of dry grass and sparse trees, creating a serene and naturalistic atmosphere.


A JOURNEY OF AFRICAN
SIGNIFICANCE



Kruger Shalati: The Train on the Bridge. One of the most anticipated and exciting new offerings coming to the iconic Kruger National Park, South Africa. A perfect combination of Africa's most breathtaking natural splendours with well-deserved luxuries aboard a newly refurbished train that's reminiscent of African excellence.

A leopard is walking from left to right across a savanna landscape. The scene is bathed in the warm, golden light of sunset or sunrise, with long shadows cast on the ground. The leopard's spotted coat is clearly visible against the darker background of the grass and trees.

A JOURNEY OF AFRICAN
SIGNIFICANCE

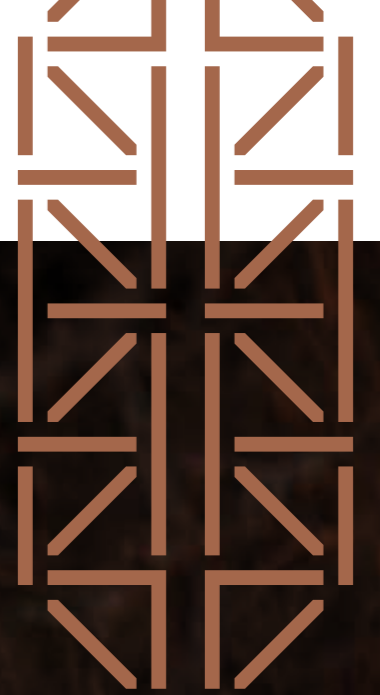
A decorative graphic element consisting of a grid of squares. Each square contains a diagonal line from the top-left to the bottom-right, creating a pattern of triangles. The lines are a light, warm color, possibly gold or light brown, set against a dark background.

Permanently stationed on the historically-rich Selati Bridge above the Sabie River, Kruger Shalati will offer the most unique luxury accommodation in a re-envisioned train which will pay homage to the guests who explored the park nearly 100 years ago while welcoming new explorers from near and far.

A leopard is walking across a savanna landscape during sunset. The leopard is in the center-left of the frame, moving towards the right. The background is a vast, open plain with sparse vegetation under a warm, orange-hued sky. The overall mood is serene and majestic.

A JOURNEY OF AFRICAN
SIGNIFICANCE

The train celebrates where the first visits to the iconic park were allowed in the early 1920s, the train would park overnight in the exact spot where Kruger Shalati will be positioned.



A leopard is walking from left to right across a savanna landscape during sunset. The scene is bathed in a warm, golden light, highlighting the leopard's spotted coat and the dry grass. The background is a soft-focus view of the savanna with some trees and bushes.

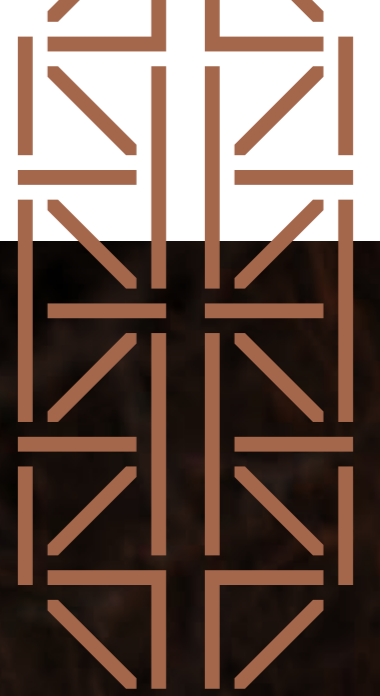
A JOURNEY OF AFRICAN
SIGNIFICANCE

Whether guests are looking for a one-of-a-kind adventure, an enthralling break or to simply immerse themselves in Earth's finest creations, Kruger Shalati looks forward to welcoming each guest on a journey of discovery with nature in the most extraordinary way imaginable.

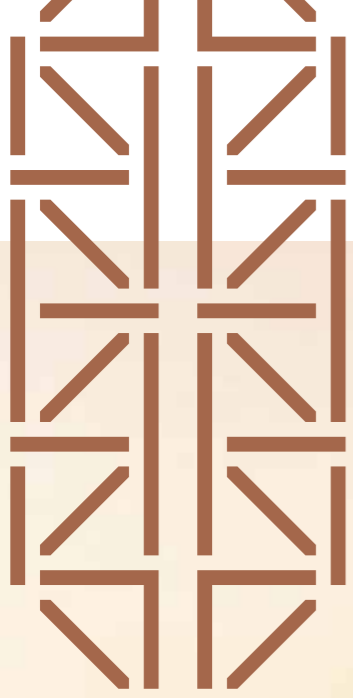


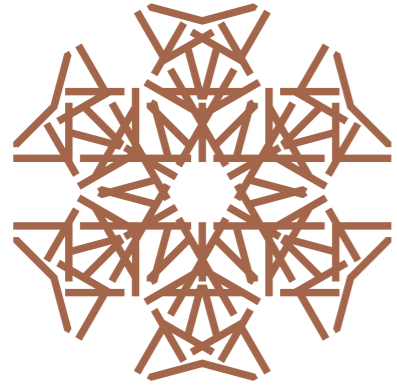
A leopard is walking from left to right across a savanna landscape. The scene is bathed in the warm, golden light of a sunset or sunrise, with long shadows cast across the dry grass. The leopard's spotted coat is clearly visible against the darker background.

A JOURNEY OF AFRICAN
SIGNIFICANCE



Launching in December 2019.





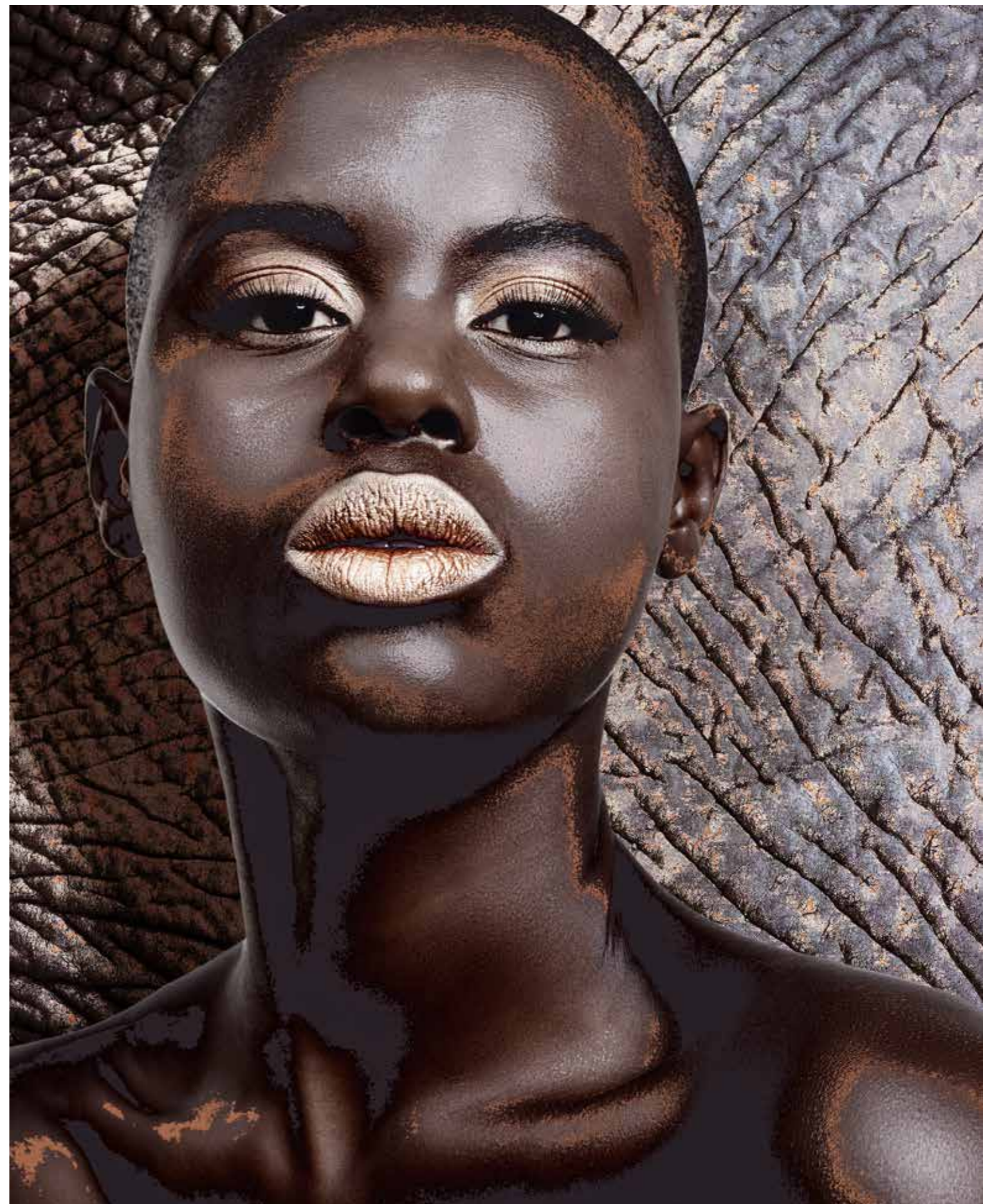
AFRICAN WARRIOR QUEEN

The train name is inspired by Shalati; an African warrior queen.

The origins of Shalati's ruling go back to the 19th century. According to oral tradition, Shalati was one of the first female warrior chiefs of the small Tebula clan, part of the Tsonga tribe that lived in the bush around the Murchison Range in the present-day Limpopo Province.

Shalati warrior hosikati (queen) was no ordinary woman, while most queens wanted a brave king to come and save them, she wanted a bayonet war axe so she could save her clan.

She was a warrior for her clan as well as humanity. During her chieftainship, she learnt how the world worked... but had a vision of a perfect world, one without crime, war and inequality.





A CELEBRATION OF AFRICA

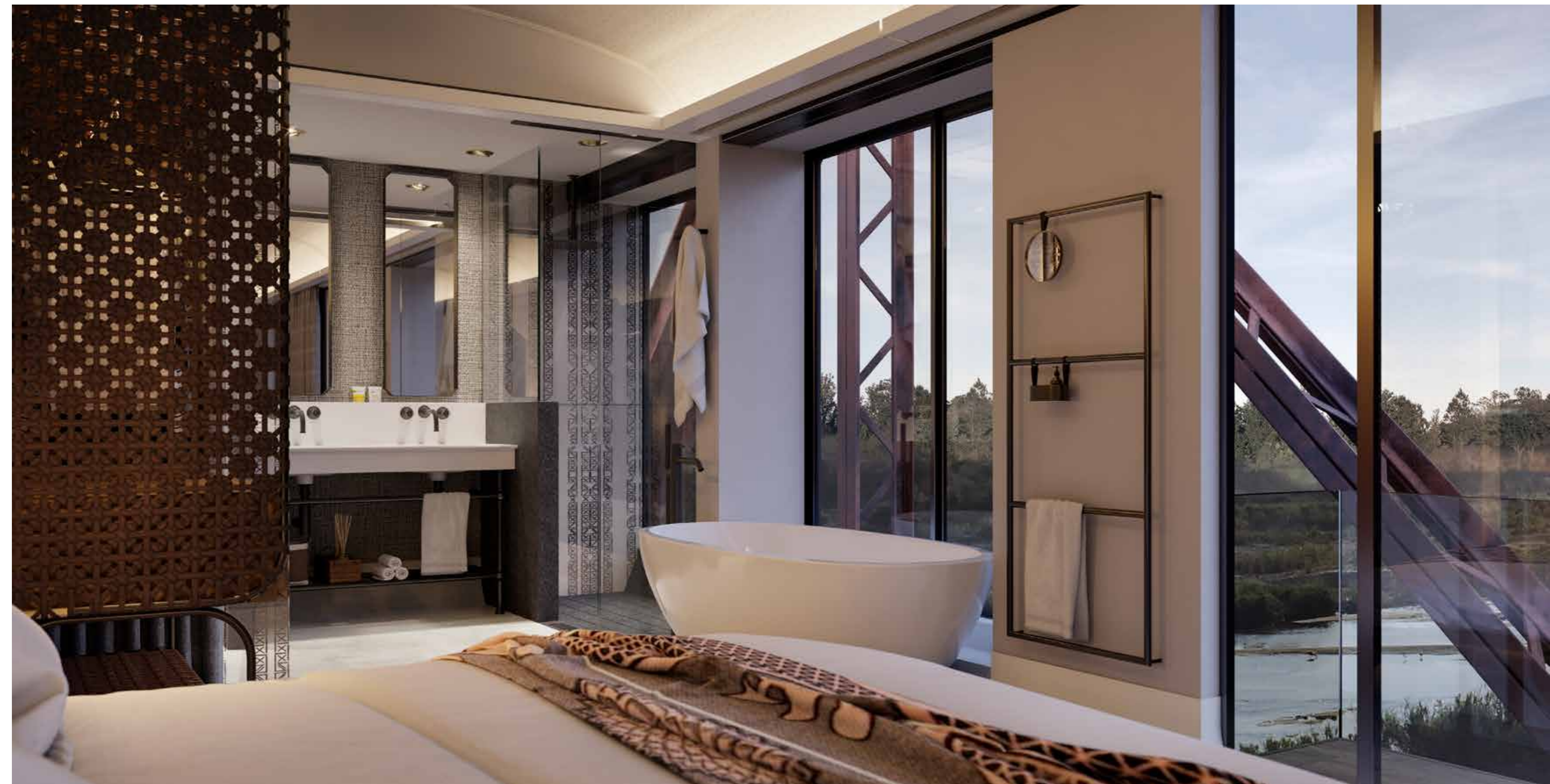
Offering 31 rooms, consisting of 24 carriage rooms and 7 Bridge House rooms, all of which will provide a deeply visceral experience, tailored for immersive comfort.

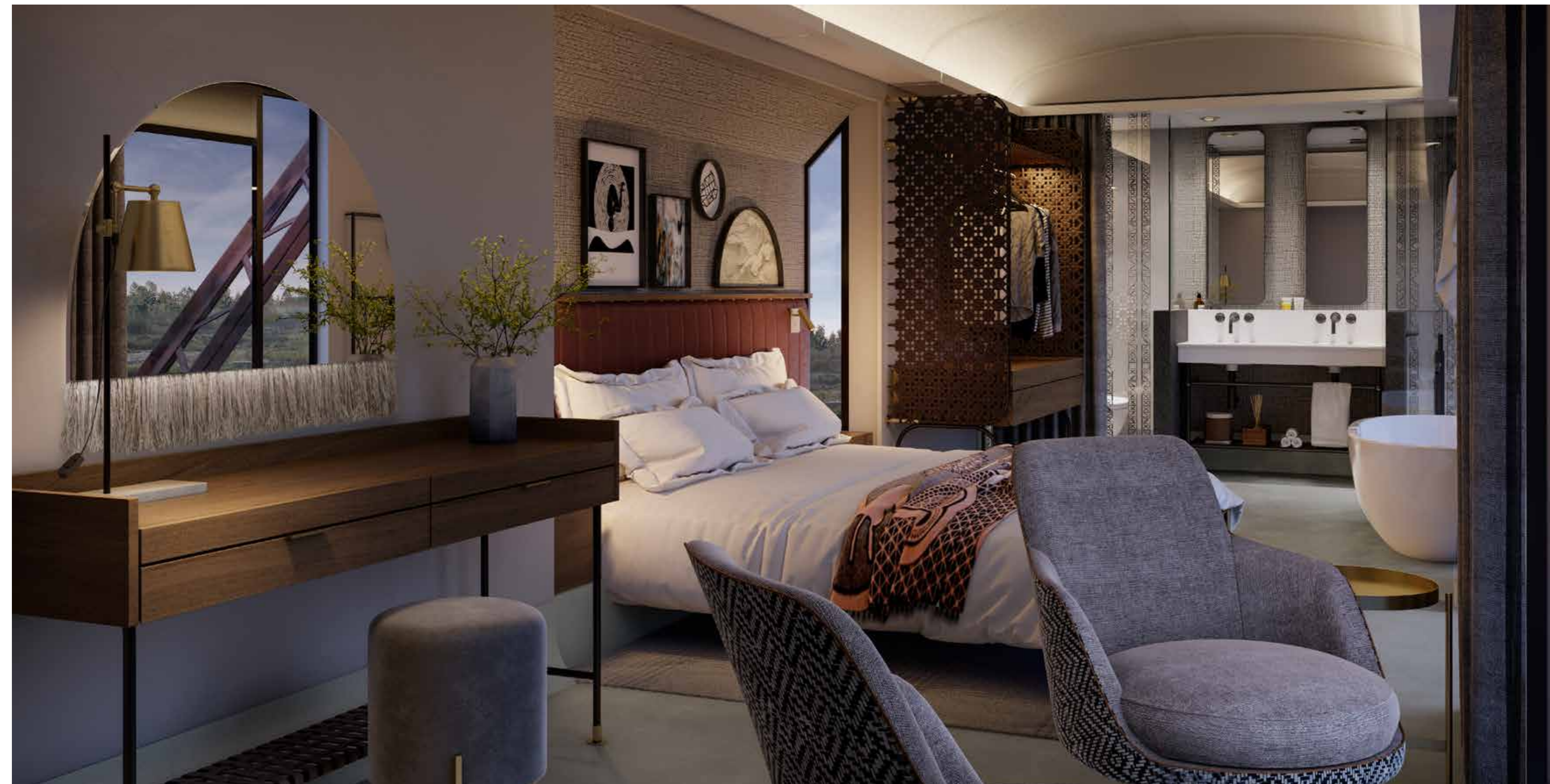
CARRIAGE ROOMS

The glass-walled, large train rooms allow for infinite views along the length of the majestic Sabie River while the style of the train is a celebration of African design in collaboration with local art and crafting skills. With a strong influence by the natural world, each coach is created as a luxury den, adorned with organic furnishings, patterns and textures.

BRIDGE HOUSE ROOMS

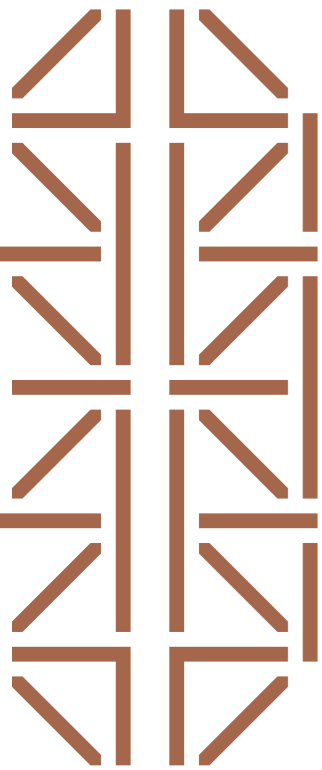
The Bridge House transcends the wilderness experience with 7 elegantly decorated rooms that offer remarkable views alongside the Sabie River and adjacent to the bridge which encourage you to live in the present and completely feel at one with nature. One of the 7 rooms is the exclusive honeymoon suite, while the other rooms can be interleading for a unique family experience.







GATEWAY TO WONDEROUS WILDERNESS



Situated as a gateway to the Kruger National Park with the Big 5 roaming freely, adjacent to the Skukuza Camp, Kruger Shalati offers an express entryway to freedom, relaxation and meaningful connection. Kruger Shalati guests have convenient access to all that the park has to offer and a diverse range of other major attractions in the area.

- 5-hour drive from Johannesburg
- Skukuza Airport 4km
- Kruger Mpumalanga International Airport 110km/2 hours
- A myriad of wildlife and birds easily spotted from your luxurious room and on game drives
- Access to Kruger Station (Historical Selati)
- Stevenson-Hamilton Memorial Library
- Skukuza Golf Course
- Accessible through the Paul Kruger and Phabeni gates

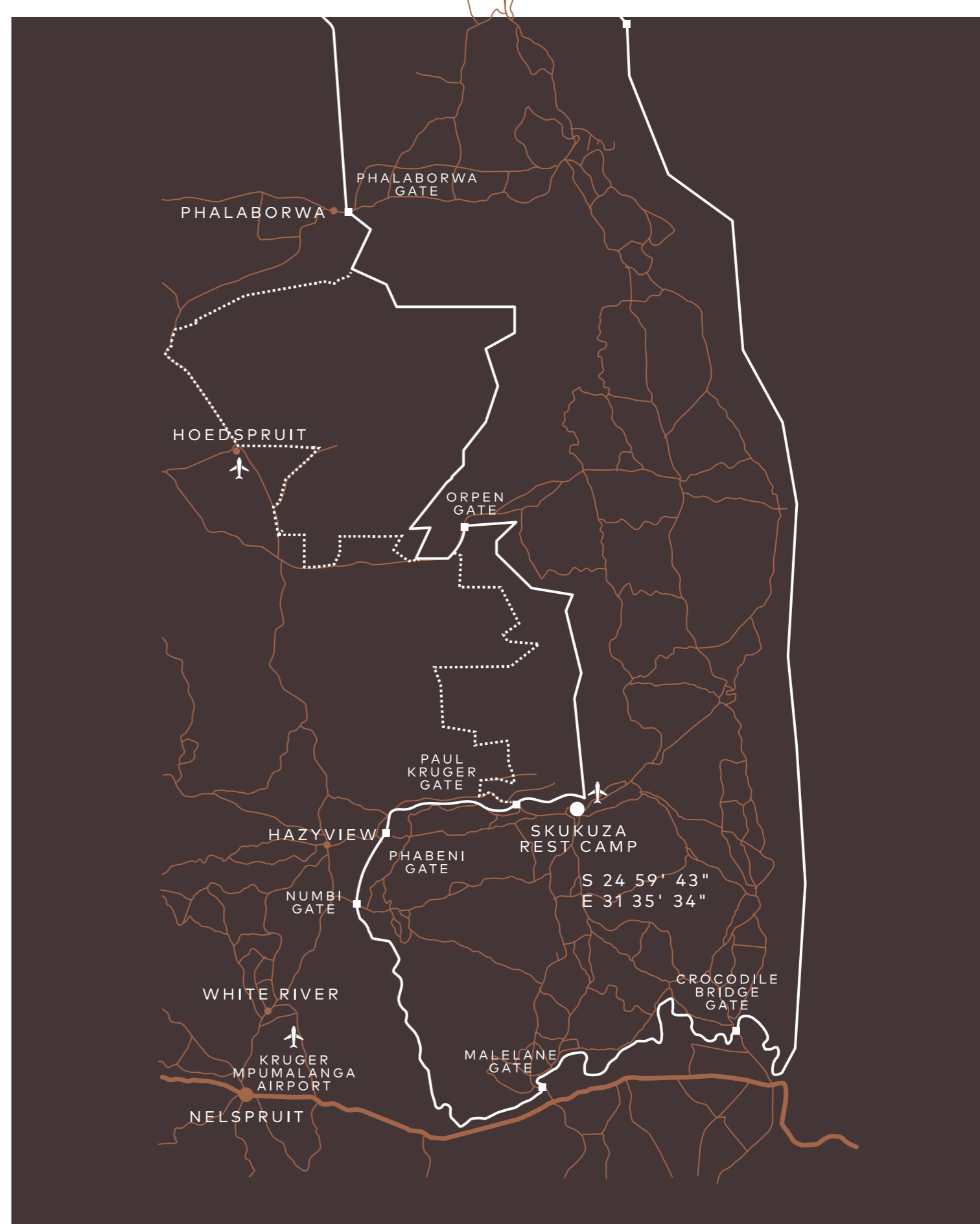


GATEWAY TO WONDEROUS WILDERNESS



KRUGER NATIONAL PARK FACTS

- 2 000 000 hectares in size
- Approximately 360km long
- Home to over 336 tree, 49 fish, 34 amphibian, 114 reptile, 508 bird and 147 mammal species
- 54 known cultural heritage sites
- More than 300 archaeological Stone Age sites





LUXURY LIVING

Kruger Shalati is ideally located to provide bespoke experiences that go beyond expectation.

- Rates inclusive of all meals, house-drinks and 2 game drives daily
- An exclusive and highly exceptional dining experience complemented by breathtaking views of the majestic Sabie River
- Beautiful overhanging pool complete with a luxurious deck and comfortable loungers
- Bridge House rooms are family-friendly, while The Train on the Bridge is exclusively for persons 12 years and older



LUXURY LIVING

TRAVERSING WILDERNESS

Game drives at Kruger Shalati are undertaken by passionate and professional rangers who are eager to share their in-depth knowledge and stories of the fascinating wildlife and the surrounds. With a vast range of pristine wilderness to explore in the Kruger National Park and a plethora of African animals to spot, each game drive encounter offers a unique story of its own.

CULINARY DELIGHT

Our delectable African-inspired fare is a true extension of the Kruger Shalati experience. The abundance of exquisite dishes paired with an authentic African atmosphere and majestic views of the Sabie River makes for a highly exceptional dining experience.

A SENSORY EXPERIENCE

A special and unique feature of Kruger Shalati is the impressive viewing deck complete with a beautiful overhanging pool. Set in tranquil surrounds with the Sabie River flowing below, it provides an unsurpassed combination of wildlife spotting and relaxation.

————— KRUGER —————

S H A L A T I

THE TRAIN ON THE BRIDGE



KRUGER SHALATI THE TRAIN ON THE BRIDGE
SELATI BRIDGE SKUKUZA REST CAMP KRUGER NATIONAL PARK
PO BOX 360 SKUKUZA 1350
INFO@KRUGERSHALATI.COM KRUGERSHALATI.COM
FACEBOOK: @KRUGERSHALATI INSTAGRAM: @KRUGER_SHALATI

