

OL DONYO LODGE

MBIRIKANI GROUP RANCH | CHYULU HILLS NATIONAL PARK



ol Donyo Lodge is located on the Maasai-owned Mbirikani Group Ranch, comprising of 110,000 hectares of wilderness between Amboseli and Tsavo National Parks and bordering Chyulu Hills National Park.

This stunningly beautiful area is incredibly diverse and often has spectacular views of Mount Kilimanjaro. No other lodge in Africa offers such a wide range of experiences, in such a private setting. As one of Kenya's only three Relais & Châteaux properties (other being sister properties Mara Plains Camp and Mara Nyika Camp), the lodge is perched on a hillside with views of East Africa's classic savannahs below.

Eight deluxe pool suites plus one two-bedroom family suite offer a harmonious blend of contemporary and rustic accommodation, merging the landscape into each suite. Designed for broad appeal, the lodge is a perfect getaway for families, honeymooners or multi-generational groups. What makes it a standout is its considerable variety of activities – from cultural visits, good quality wildlife viewing, hiking, horseback riding and mountain biking – ol Donyo Lodge is a perfect place to feel Africa.

Add to this the lodge's creature comforts of fine dining, in-room spa treatments, infinity pool, star beds and multiple lounges, and it is a place to relax and unwind for days. Wildlife is here. This semi-arid region offers a diverse safari and wildlife viewing experience to that found in the Maasai Mara area.

ol Donyo Lodge pairs perfectly with its sister properties in the Maasai Mara such as our Mara Plains Camp, The Jahazi Suite at Mara Plains, Mara Expedition Camp, Mara Toto Camp or Mara Nyika Camp. Together this combination gives guests the most well-rounded and complementary Kenyan safari itinerary.

No two of the lodge's suites is precisely the same, but what is consistent is the view to Mount Kilimanjaro and the lodge's famous waterhole as well as star beds atop each of the suites for sleeping under the night sky. All the suites have private plunge pools, and two are connected, creating a 'villa' concept, perfect for families or couples travelling together.

The thatch-roofed suites blend with the environment despite their commanding design. Flashes of bright colour interspersed with earthy tones, wildlife photography and local crafts punctuate the open-air layout.



OL DONYO LODGE

MBIRIKANI GROUP RANCH | CHYULU HILLS NATIONAL PARK

Most of the lodge staff is from the local Maasai community and keen to share their fascinating culture with guests – it is a treasured chance to learn. Furthermore, the Mbirikani Group Ranch and ol Donyo Lodge are among the first examples of a community tourism partnership. The land is leased from the Maasai by the lodge, providing them with benefits from tourism and an incentive for conservation. Along with its local conservation partner Big Life Foundation, the lodge continues to push the boundaries in innovative community conservation schemes. Every guest of ol Donyo Lodge contributes to these vital initiatives.

CAMP FEATURES

ol Donyo can accommodate up to 20 adult guests.

Total Number of Bedrooms:

- 8 twin or double Deluxe pool suites
- 1 two-bedroomed Sambu suite
- 2 Tented guide rooms

Type of Lodge:

Réserve Collection Safari Camp

Lodge Season & Opening:

Year Round

Ideal length of stay:

3 / 4 Nights



CHECK OUT TIME

We maintain a high level of flexibility when it comes to check-out times at our camps. However, due to some scheduled air transfer schedules, there are instances where we may kindly request guests to check out of their suites by 9:00am. In such situations, our lodges and camps are set up to ensure that guests can utilise the facilities located in the central area. This includes access to Wi-Fi, the provision of complimentary drinks and lunch in the event of any unexpected delays, and access to hides or other activities if available.

CAMP CO-ORDINATES

S2°30'7.34", E37°45'12.95"

ACCESS DIRECTIONS

- Scheduled light aircraft transfer to the nearest airstrip, ol Donyo, from Nairobi's Wilson domestic airport (50 mins) and other locations in Kenya;
- Private Air charter access available;
- ol Donyo Lodge is a 30-minute transfer from its airstrip;
- Private Air access available;
- Airstrip length: 1300m

OL DONYO LODGE

MBIRIKANI GROUP RANCH | CHYULU HILLS NATIONAL PARK



ACTIVITIES

Days at ol Donyo Lodge are full of options. To have such a vast area to explore, from high-altitude mist forest through lava fields, then woodland to savannah, and ending at the famous kopjes, it's a paradise of discovery. Each day, it's possible to pick your mode of transport, be it on foot, by vehicle, on horseback or even mountain bike. There is no routine here at all, and experiences are tailor-made for each guest. And if lazing around the pool, indulging in a massage or shopping sounds like a good plan, then please do. Meet the local Maasai and visit the school to look at what makes Kenya so colourful and dynamic.

Wildlife viewing

- Safari drives (day & night) in seven open vehicles stocked with snacks and drinks;
- Day trips to Amboseli Park (extra cost, subject to pre-booking);
- Log-pile and sunken hide at the waterhole for close-up wildlife encounters.
- Enjoy wildlife viewing from this property on our online HD hidecam 24 hours a day
www.greatplainsconservation.com/live-african-wildlife-webcam

Walks

Guided walks can also be arranged and are led by qualified, licensed walking guides.

Horse Riding

- All riders will need to have a short assessment in our arena prior to setting out to ensure all guests riding out can control their horse and are comfortable at a short trot. If riders do not have the required experience they will be offered a lesson in the arena instead. Plains riders will be given some instruction, a minimum requirement is a short trot;
- Horseback riding (available to guests from 12 years) is done in a range of terrain for abilities from novice to advanced;
- All guests are encouraged to complete a short questionnaire determining their riding experience and preferences prior to arrival.

Mountain biking

- ol Donyo Lodge offers guided mountain biking for guests to explore the plains and open savannah in the area;
- Wildlife seen is a range of Africa's most iconic species;
- Distances are based around guest's fitness levels and riding desire;
- Cycling terrain can range from sand to compact gravel and grass in places.

OL DONYO LODGE

MBIRIKANI GROUP RANCH | CHYULU HILLS NATIONAL PARK

Photography

- Each vehicle has high-quality 8 x 42 binoculars for guest use;
- Professional camera bodies with a wide selection of lenses available for guests to use on a complimentary basis during their stay.

Private vehicle option

Available for more flexibility upon request at extra cost, not compulsory for families travelling with children.

Private Guides

Private guides are encouraged and welcomed

Community Engagement

A variety of community engagement opportunities are available.

CENTRAL FACILITIES

- Double lounge with bar and verandah;
- Grand stone fireplace;
- Separate main dining room;
- Main infinity swimming pool with separate lounge and dining;
- Coffee/tea station;

- Great Plains Safari Boutique: Selling locally and regionally produced crafts, many of which support local community projects in the nearby Maasai communities. The Boutique also stocks the d&b clothing line: Dereck and Beverly Joubert have inspired this bespoke range of clothing they typically wear, and which is perfect and cool while on safari yet elegant when in the city. All materials are responsibly sourced.

Visit www.greatplainsconservation.com/safariboutique

FOOD AND BEVERAGE

- Our world-class meals are Relais & Chateaux recognised;
- All meals included and prepared by our Executive Chefs and their teams;
- All drinks and beverages are included, including imported spirits and champagnes;
- Group meals and/or individual tables, a la carte (menu options);
- Indoor and outdoor dining;
- All dietary requirements are catered for from regular to vegan to children, prior notice required;
- We are extremely flexible on timings. Picnic breakfasts or lunch (or both) are the norm due to very active safari drives, often delivered to the bush!



OL DONYO LODGE

MBIRIKANI GROUP RANCH | CHYULU HILLS NATIONAL PARK

ACCOMMODATION DETAILS BEDROOM FEATURES

- 8 Deluxe pool suites, each with rooftop star bed;
- The Sambu Suite is a two-bedroom pool suite of two identical suites (each with private en-suite), with a star-bed and common pool and lounge;
- Tea/Coffee station;
- All suites have views to a waterhole, savannah and Mount Kilimanjaro;
- Suites are constructed of gunnite/cement & thatch;
- Netting over beds (both inside & roof-top beds);
- Standing fans
- Some suites including the Sambu Suite have fireplaces;
- Asali and Impia are the two suites most suitable for honeymooners;
- All suites can be double or twin configuration.

Bathroom features

- En-suite with flush loo, shower (indoor and outdoor), deep stone tub and double basins;
- Hot and cold running water;
- Soap, shampoo, conditioner, lotion and eco-hairdryers provided.



ACCOMMODATING CHILDREN AND SHARING ACCOMMODATION

- We look forward to having children stay with us who are 5 years and older.
- The Sambu Family Suite can cater for a maximum of four adults sharing or two adults and up to three children (aged 6 – 15), sharing in two separate bedrooms;
- The Nyati 7 and El Mau 10 Suites can accommodate triples for children sharing with adults, upon request;
- Families with children (5-15) will never be accommodated in the same vehicle as other guests;
- Horse riding - available to guests from 12 years old and riders need to have previous experience riding horses. No beginners;
- Children of 5 years and older are welcome to participate in all scheduled camp activities, at camp manager and guide's discretion;
- Young children must be supervised as the lodge is open;
- Great Plains Young Explorers Kid's program is available – thoughtfully designed to explore various experiences and topics from birding to cooking to art to tracking wildlife.

SPA TREATMENTS

Ol Donyo Lodge offers guests a range of spa treatments to be enjoyed in-room or next to your private swimming pool. Spa treatments are excluded from the nightly accommodation rate.

OL DONYO LODGE

MBIRIKANI GROUP RANCH | CHYULU HILLS NATIONAL PARK



FITNESS

- Yoga mat, light weights available in each suite;
- Stationary exercise bikes;
- Guests can enjoy a run/walk on the airstrip.

LAUNDRY

Included in nightly tariff - next day service, weather permitting.

POWER AND COMMUNICATION

Power

- The lodge is run by a combination of solar and generator power;
- The system produces 240V, 24-hour electricity to the suites and main area;
- Plug points in each suite;
- Type of plug: British large three-pin.

Internet & Mobile

- Limited mobile reception and internet access is intermittent;
- No cell phones or computers are allowed in the public areas of lodge or on safari vehicles, only in the privacy of guest suites.

HEALTH AND SAFETY

Health

- Malaria: Minimal exposure risk– Malaria prophylaxis are recommended if guests are concerned; however, this is a remote area with little occurrence;
- Kenya is considered a Yellow Fever Zone. Consult your medical practitioner prior to travel;
- Guests must hold comprehensive medical insurance and emergency evacuation insurance;
- Senior staff all has first aid training;
- PARK doctors are available as advisors for any medical issues;
- Nearest decent medical facility is in Nairobi.

Possibility of Disabled Access

- Dining Room has wheelchair access;
- The two, separate Sirra Suites are best suited for guests with walking challenges.

Safety

- Security guards on duty 24 hours a day;
- Fire extinguishers outside each suite.

MONEY MATTERS

Safes

Safes are provided in every suite.

OL DONYO LODGE

MBIRIKANI GROUP RANCH | CHYULU HILLS NATIONAL PARK



Accepted Payment on Location

- All-inclusive. Staff gratuities can be paid in Kenyan Shillings, US Dollars or GB Pounds;
- Visa, MasterCard are accepted with a 3.5% surcharge.

The Team

Lodge Owners

Great Plains Conservation

FOUNDATION INITIATIVE

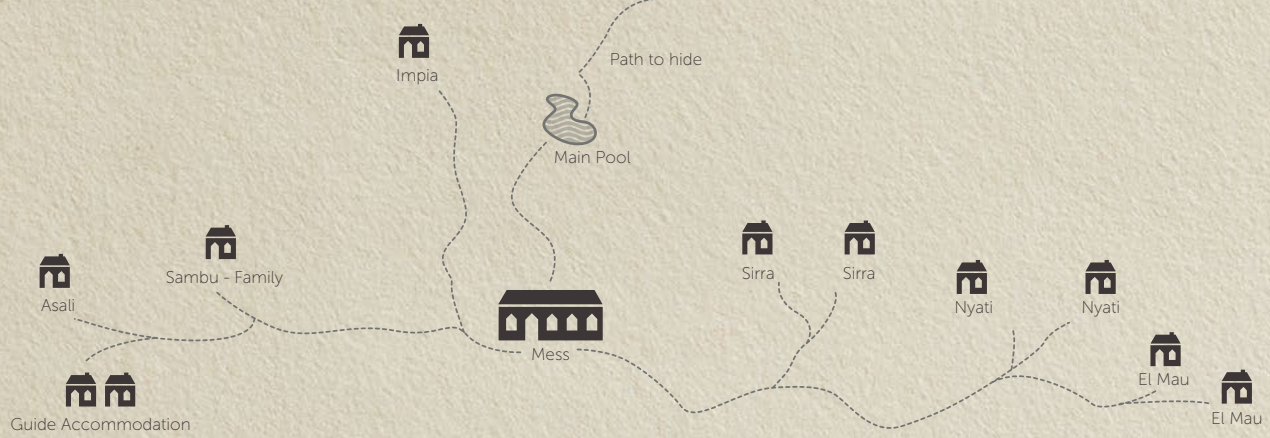
Teacher's Salaries

Great Plains supports the salaries of 24 teachers in 15 schools around Ol Donyo Lodge. Without additional teachers, student-teacher ratios in government schools in this area would be more than 100 to 1! Our support helps those schools to reduce that ratio, allowing them to dedicate more time and attention to each student. One of those schools is Enkijape, the only school in the area that specializes in serving over 60 primary school children with physical, developmental, and intellectual disabilities. Learn more at www.greatplainsfoundation.com

In addition to our own programs Great Plains Foundation keeps a list of school needs in the countries where we work. Needed items can be hand-carried by travelers or we can help purchase them locally. To learn more or to help support students and educators as part of your trip please reach out info@greatplainsfoundation.com

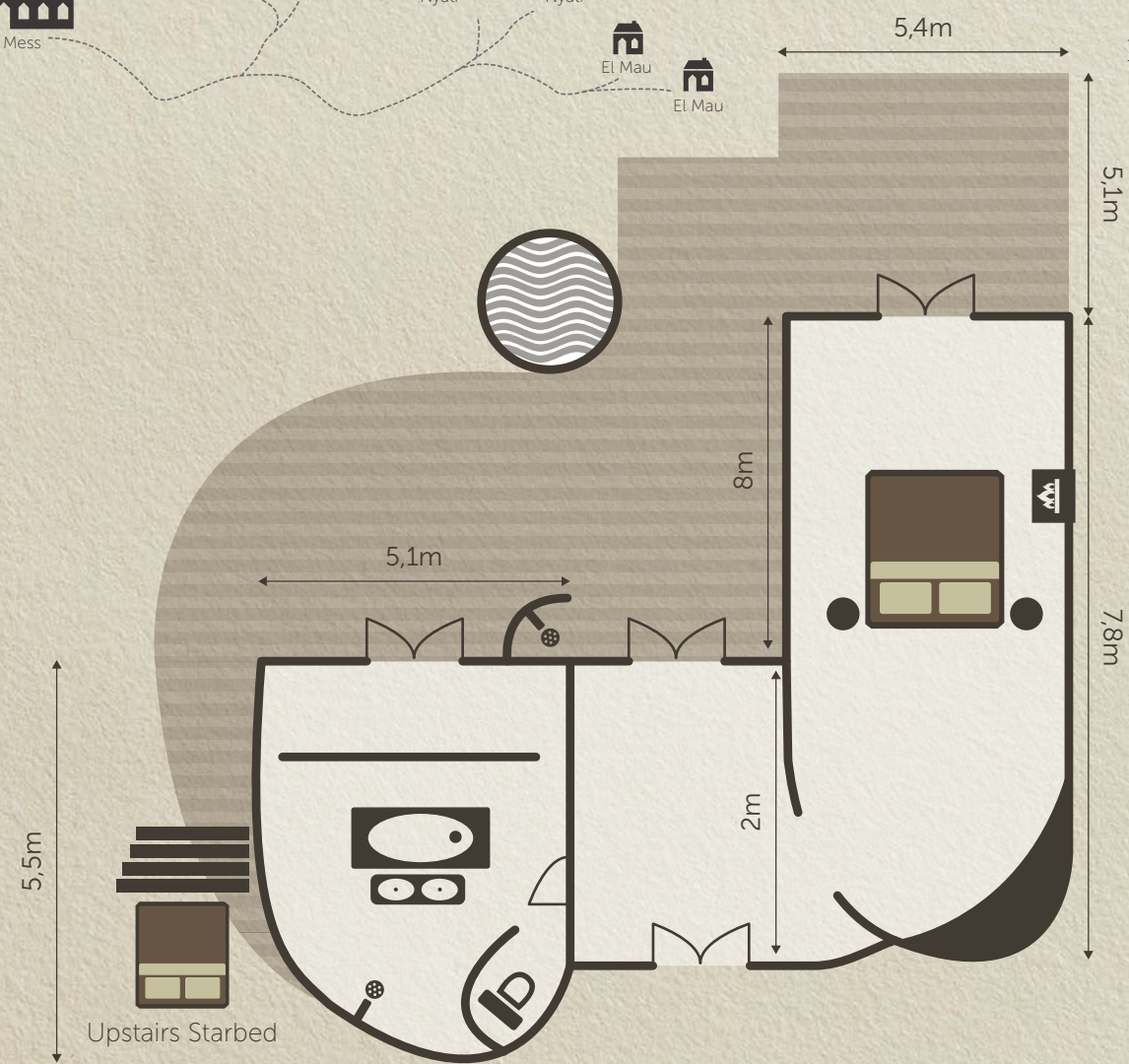
T: +27 (0) 87 354 6591 | AFTER HOURS EMERGENCY: +27 (0) 79 284 5945

WWW.GREATPLAINSCONSERVATION.COM / RESERVATIONS@GREATPLAINSCONSERVATION.COM



KENYA
GREAT PLAINS
 OL DONYO LODGE

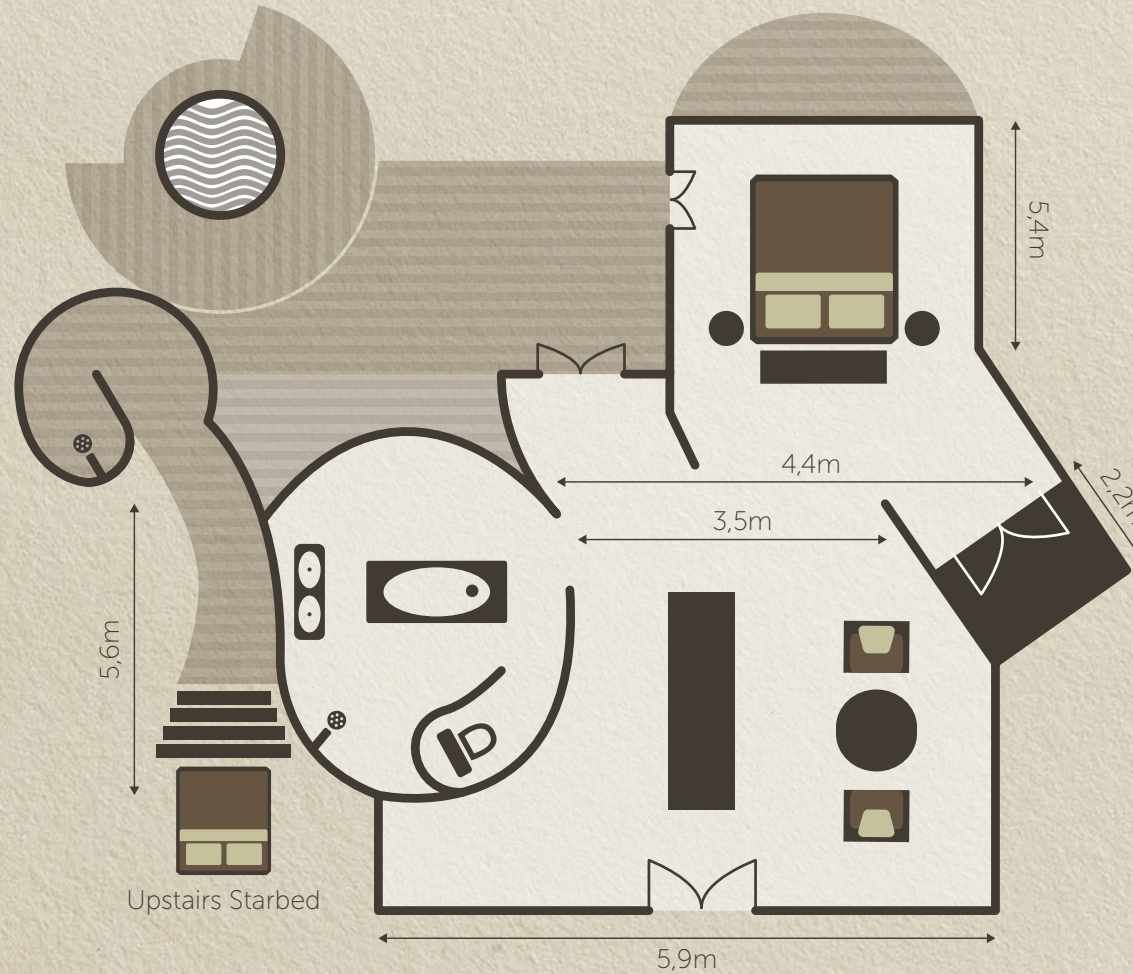
ASALI
 DELUXE POOL SUITE

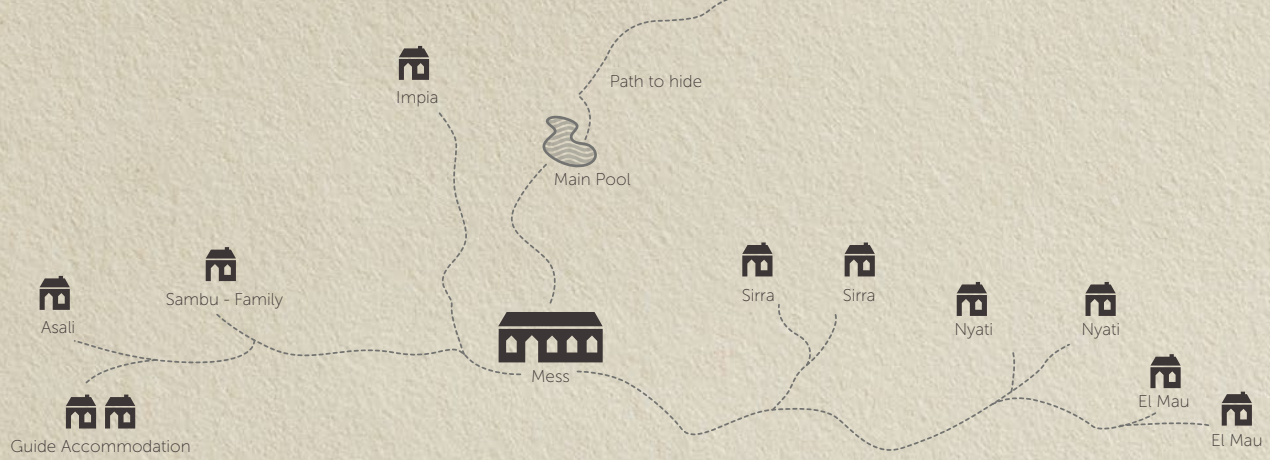


KENYA
GREAT PLAINS

OL DONYO LODGE

IMPIA
DELUXE SUITE

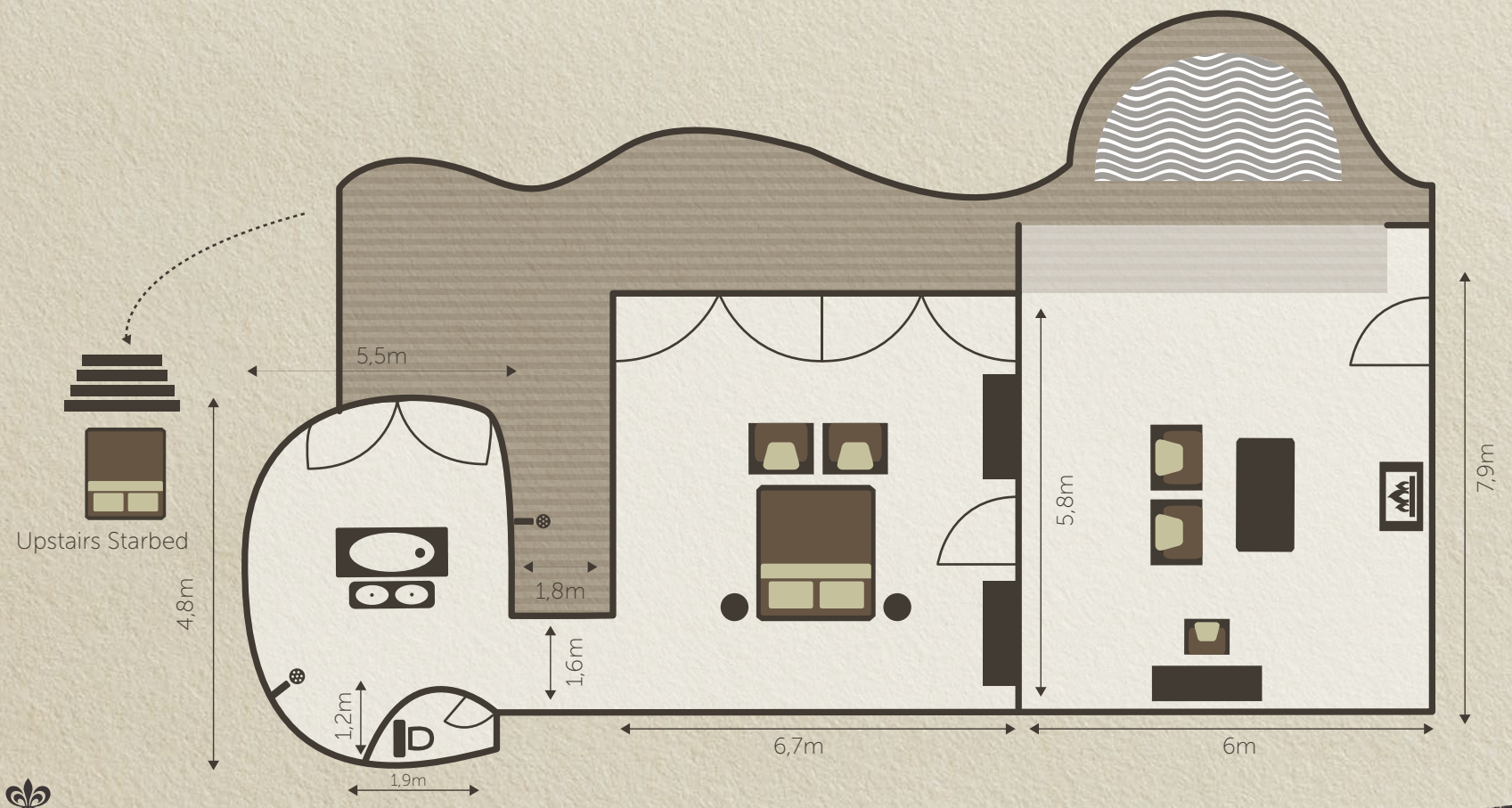


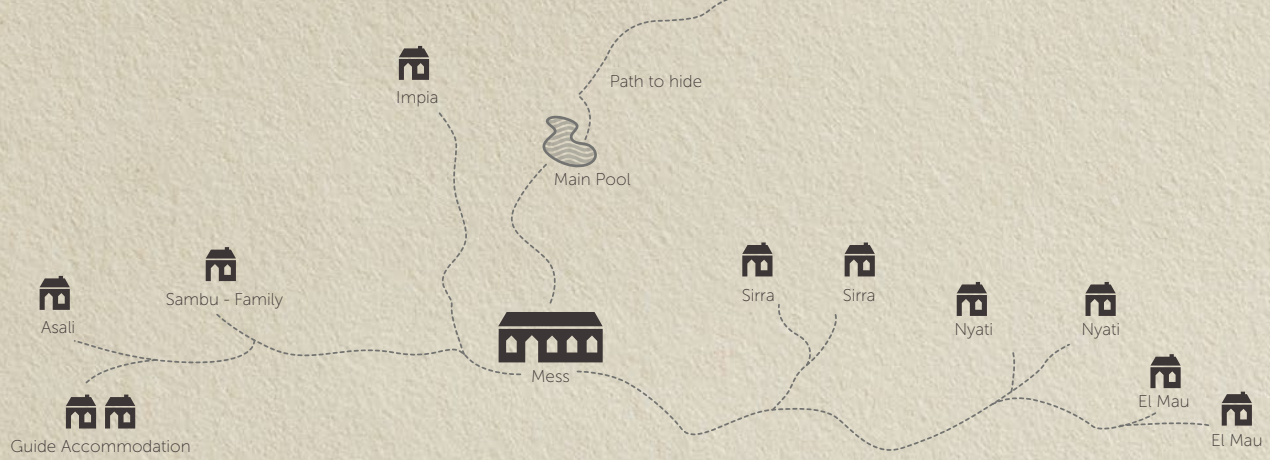


KENYA
GREAT PLAINS

OL DONYO LODGE

SIRRA
 DELUXE POOL SUITE





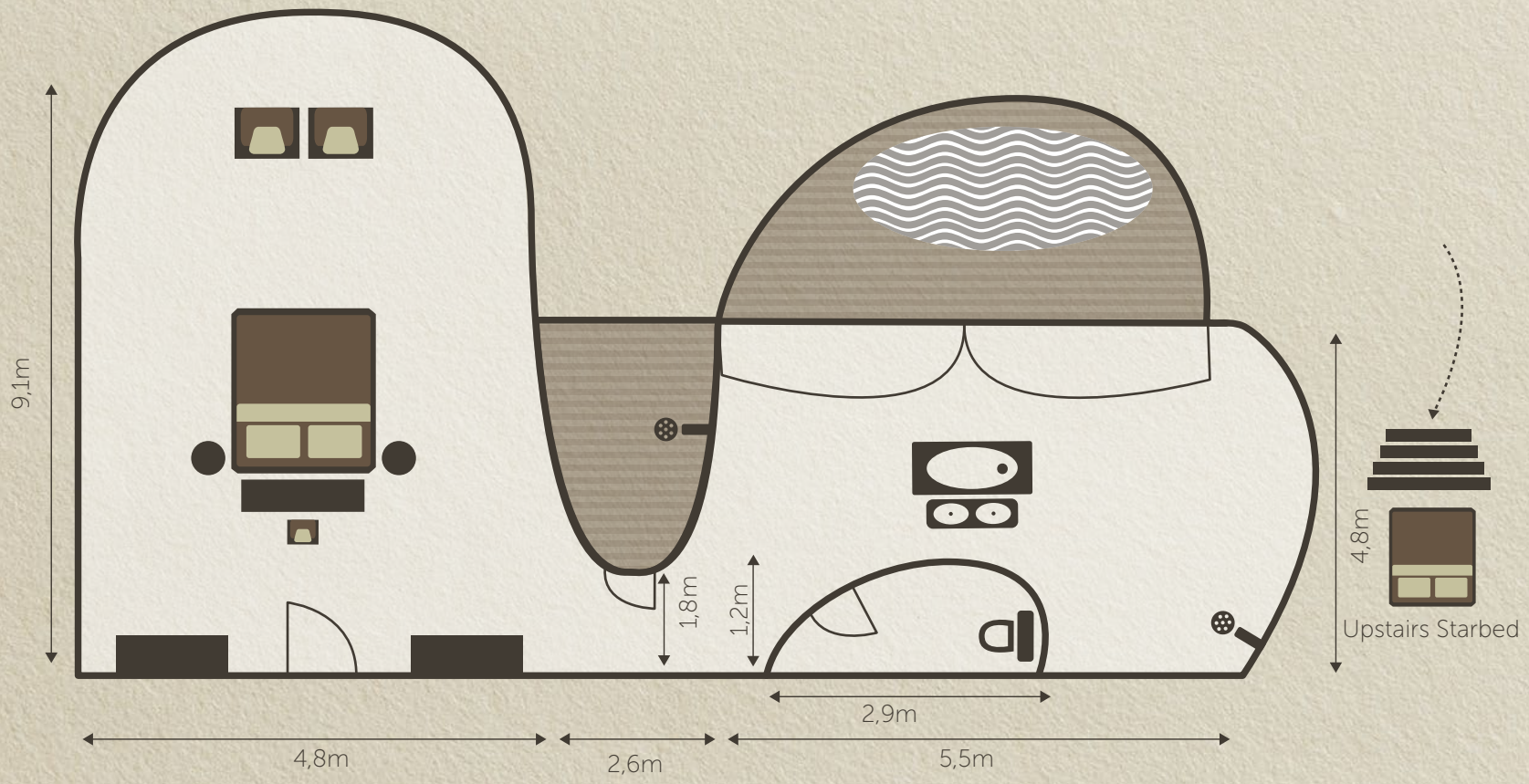
KENYA

GREAT PLAINS

OL DONYO LODGE

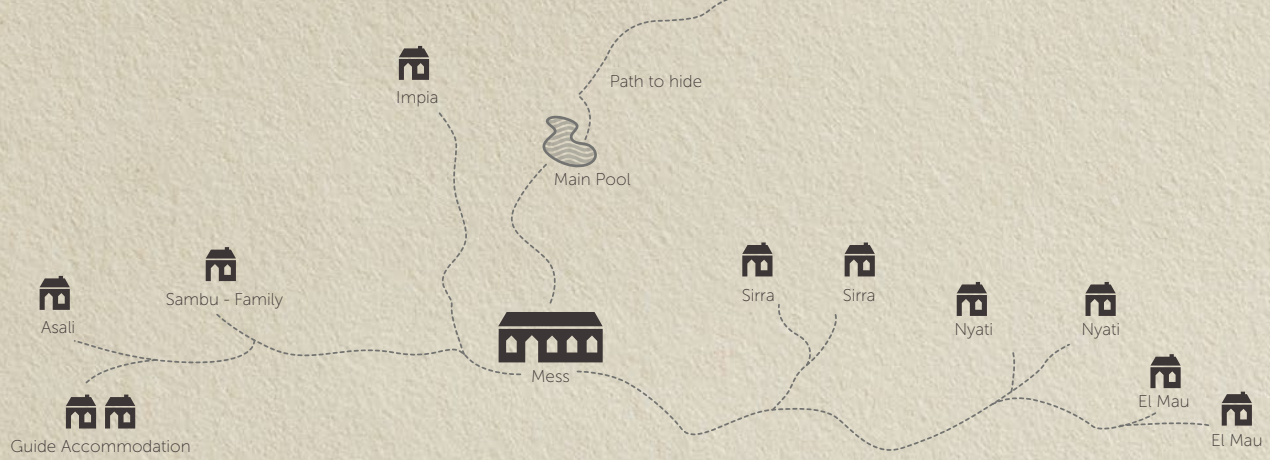
SIRRA & NYATI

DELUXE POOL SUITE



WWW.GREATPLAINSCONSERVATION.COM / RESERVATIONS@GREATPLAINSCONSERVATION.COM





KENYA
GREAT PLAINS

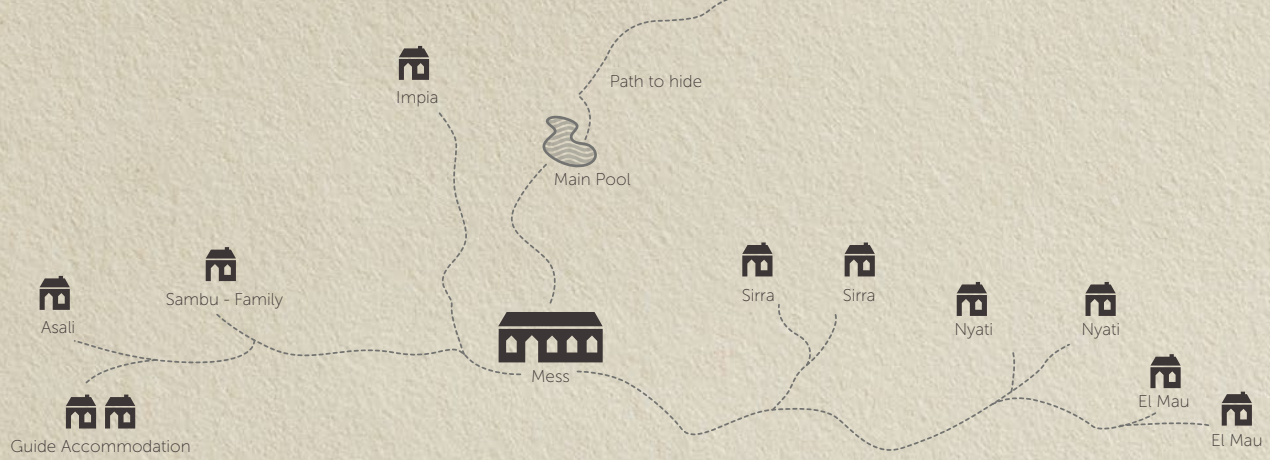
OL DONYO LODGE

NYATI
 DELUXE POOL SUITE



WWW.GREATPLAINSCONSERVATION.COM / RESERVATIONS@GREATPLAINSCONSERVATION.COM



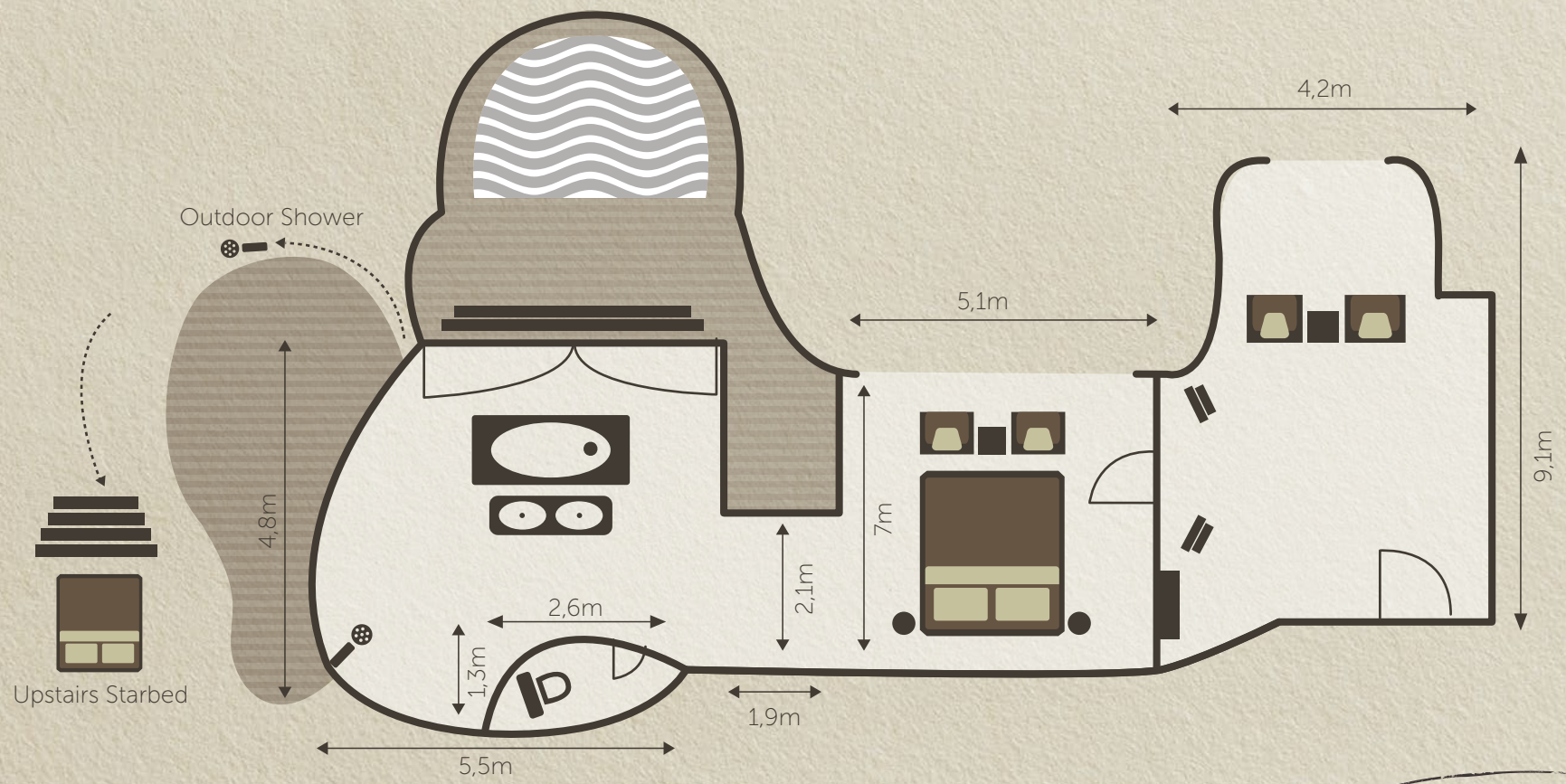


KENYA

GREAT PLAINS

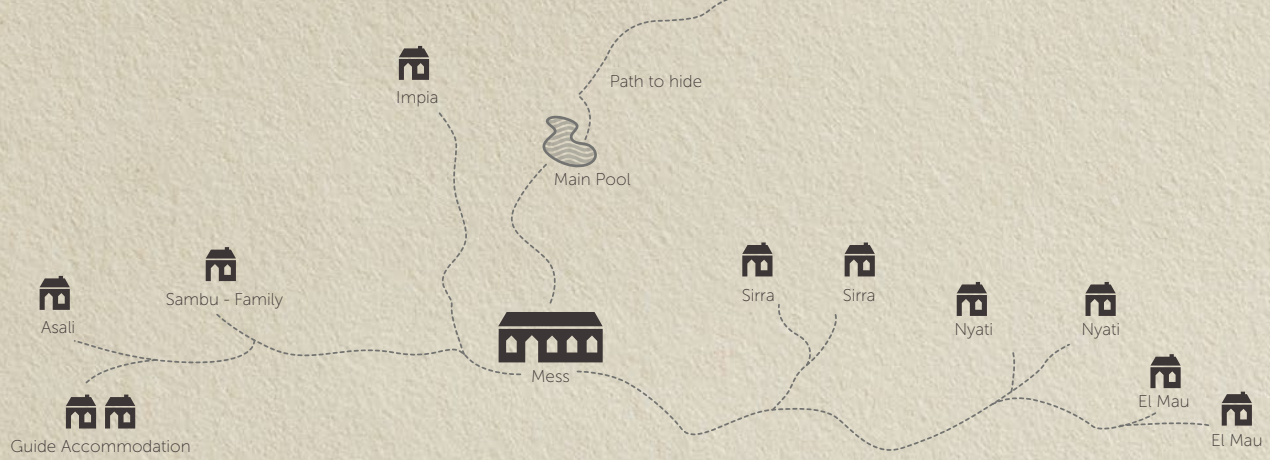
OL DONYO LODGE

EL MAU DELUXE POOL SUITE



WWW.GREATPLAINSCONSERVATION.COM / RESERVATIONS@GREATPLAINSCONSERVATION.COM

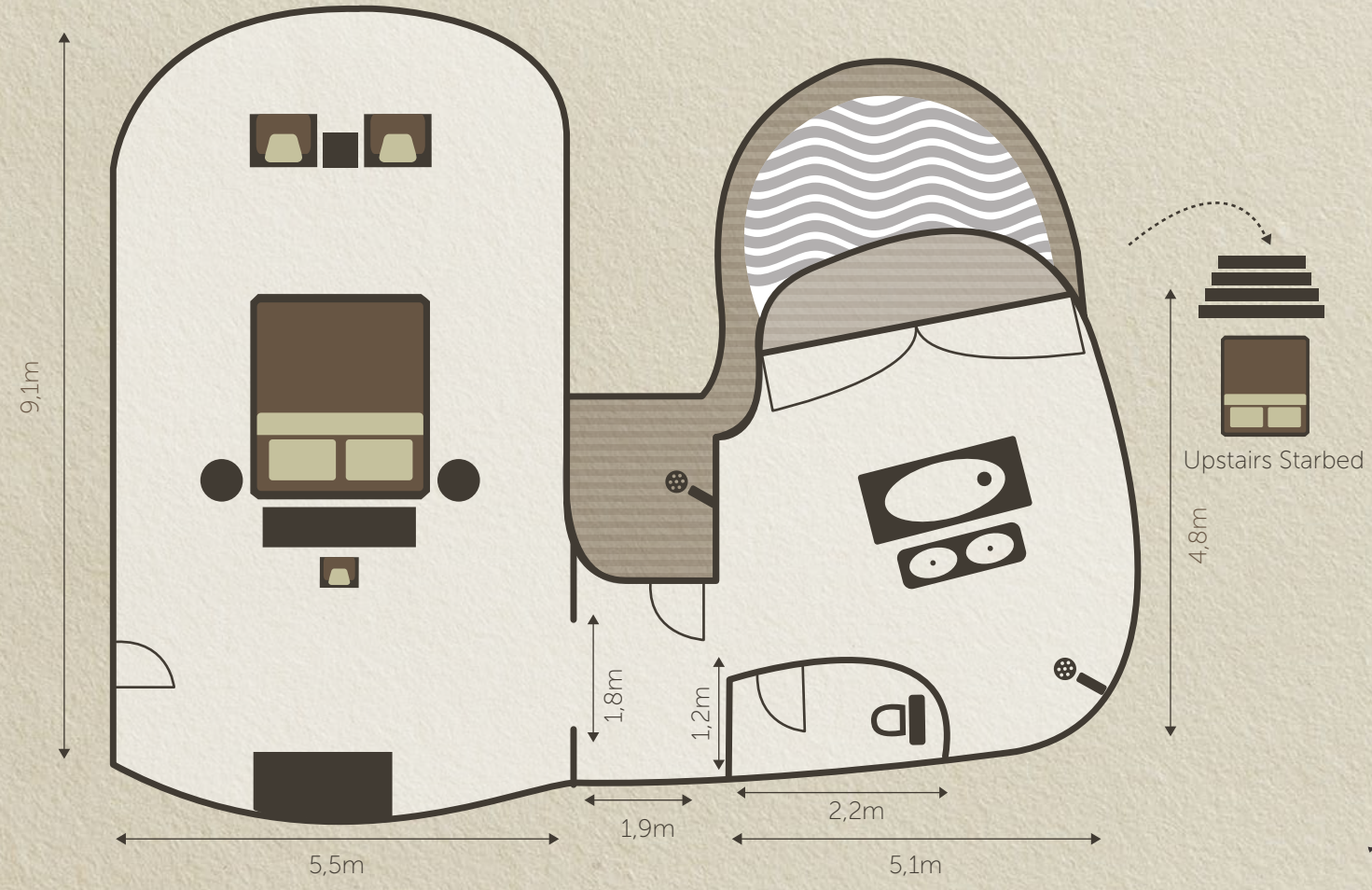




KENYA
GREAT PLAINS

OL DONYO LODGE

EL MAU
 DELUXE POOL SUITE



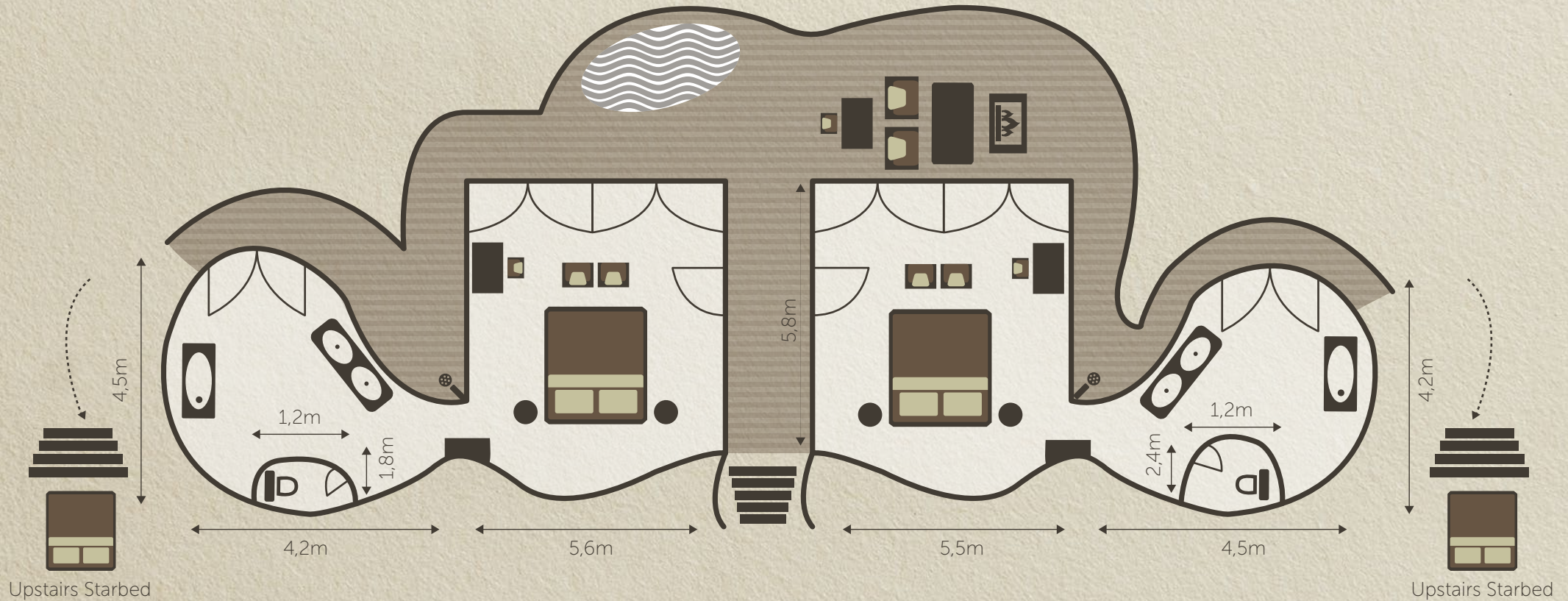
WWW.GREATPLAINSCONSERVATION.COM / RESERVATIONS@GREATPLAINSCONSERVATION.COM



KENYA
GREAT PLAINS

OL DONYO LODGE

SAMBU
 FAMILY SUITE



WWW.GREATPLAINSCONSERVATION.COM / RESERVATIONS@GREATPLAINSCONSERVATION.COM



GREAT PLAINS

CONSERVING AND EXPANDING NATURAL HABITATS

GREAT PLAINS - KENYA



GREAT PLAINS CONSERVATION STRIVES TO FIND THE RIGHT FORMULA OF CONSERVATION, COMMUNITIES AND COMMERCE THAT MAKES A LASTING, SUSTAINABLE DIFFERENCE TO THE WORLD'S ICONIC WILDLIFE HABITATS



• Camp Kunji
• Mara Toto Tree Camp
• Mara Expedition Camp
• Mara Plains Camp & The Jahazi Suite at Mara Plains
• Mara Nyika Camp & The Sambuk Suite at Mara Nyika
Mara Triangle

Maasai Mara Reserve

Serengeti National Park

Shompole

Nairobi

Kenya

Tanzania

Mount Kilimanjaro

Ol Donyo Lodge

KENYA CAMPS

ACTIVITY	OL DONYO LODGE	MARA PLAINS CAMP & THE JAHAZI SUITE AT MARA PLAINS	MARA NYIKA CAMP & THE SAMBUK SUITE AT MARA NYIKA	MARA TOTO TREE CAMP OPENING JULY 1, 2024
Camp Classification	Réserve-Collection	Réserve-Collection	Réserve-Collection	Réserve-Collection
Location	Mbirikani Group Ranch	Olare Motorogi Conservancy	Naboisho Conservancy	Maasai Mara National Reserve
Size of concession / reserve	110 000 Hectares / 275 000 Acres	13 300 Hectares / 33 000 Acres	20 000 Hectares / 50 000 Acres	28 000 Hectares / 69 000 Acres
Traversing	Mbirikani Group Ranch	Olare Motorogi Conservancy & Maasai Mara National Reserve	Naboisho Conservancy & Maasai Mara National Reserve	Mara North Conservancy & Maasai Mara National Reserve
Number of Suites / Tents	8 Suites	5 Suites	3 Suites	4 Suites
Family Accommodation	One 2-bedroom suite	The 2-bedroom Jahazi Suite at Mara Plains	The 2-bedroom Sambuk Suite at Mara Nyika. One two-bedroom suite	n/a
Children can be accommodated from:	5 Years	6 Years	6 Years	6 Years
Day Drives	Yes	Yes	Yes	Yes
Night Drives	Yes	Yes	Yes	Yes (water level dependent)
Cultural Experience	Yes	Yes	Yes	Yes
Private Vehicle (at an additional charge)	Yes	Yes	Yes	Yes
Guided Walks	Yes	No	No	No
Horseback Riding	Yes	n/a	n/a	n/a
Hot-Air Ballooning (at an additional charge)	n/a	Yes	Yes	Yes
Mountain Biking	Yes	n/a	n/a	n/a
Hide	Yes	n/a	n/a	n/a
Main Swimming Pool / Private Plunge Pools	Yes (Main Pool & Private Plunge Pools)	Yes (Jahazi Suite only)	n/a	n/a
Shower	Indoor & Outdoor	Indoor	Indoor	Indoor
Bath	Yes	Yes	Yes	Yes
Hairdryers (low voltage)	Yes	Yes	Yes	Yes
Mosquito Nets	Yes	Yes (On all tent sides)	Yes (On all tent sides)	Yes (On all tent sides)
Fans	Standing fan	Overhead fan	Standing fan	Standing fan
Wi-Fi – in-room (complimentary)	Yes	Yes	Yes	Yes
Safe - In-room	Yes	Yes	Yes	Yes
Spa treatments (at an additional charge)	Yes (In-room only)	Yes	Yes (In-room only)	Yes (In-room only)
Fitness	In-room Equipment	In-room Equipment	In-room Equipment	In-room equipment
Boutique on site	Yes	Yes	Yes	Yes

KENYA CAMPS

ACTIVITY	MARA EXPEDITION CAMP
Camp Classification	Explorers Collection
Location	Maasai Mara National Reserve
Size of concession / reserve	28 000 Hectares / 69 000 Acres
Traversing	Mara North Conservancy & Maasai Mara National Reserve
Number of Suites / Tents	5 Tents
Family Accommodation	One 2-bedroom family tent
Children can be accommodated from:	6 Years
Day Drives	Yes
Night Drives	Yes (water level dependent)
Cultural Experience	Yes
Private Vehicle (at an additional charge)	Yes
Guided Walks	No
Horseback Riding	n/a
Hot-Air Ballooning (at an additional charge)	Yes
Mountain Biking	n/a
Hide	n/a
Main Swimming Pool / Private Plunge Pools	Main swimming pool
Shower	Indoor
Bath	n/a
Hairdryers (low voltage)	n/a
Mosquito Nets	Yes (On all tent sides)
Fans	Standing fan
Wi-Fi – in-room (complimentary)	Yes
Safe - In-room	Yes
Spa treatments (at an additional charge)	n/a
Fitness	Yoga mats
Boutique on site	n/a