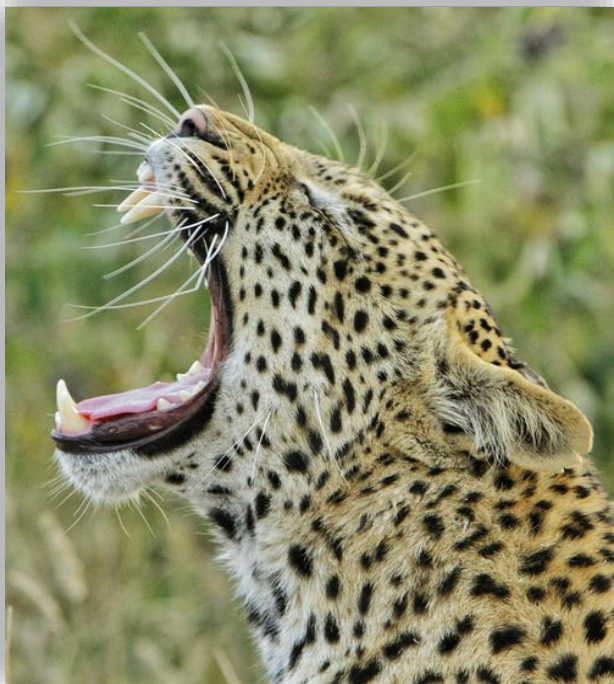




At Kambaku, we have welcomed our fair share of novice and professional wildlife photographers alike, and we appreciate the value of immortalizing a safari experience in pictures. This enhanced game drive includes the services of a professional guide who is trained in the art of wildlife photography, constantly putting the light and subject in the best possible position.

The use of private vehicle enables flexibility, allowing for more time and patience to be spent on the hunt for the ultimate shot.

Advice is constantly at hand with regards to camera settings, lighting, subject behavior and composition.



#### **Private vehicle R 7500 per day (2021)**

- Equipment hire available on request and tailor made.
- All forms of gear available from novice to pro including gimbles and stabilizers.
- Equipment is charged, formatted and ready to go upon your arrival.
- Specialist photography guide on request

*Ts & Cs – All equipment and guide not included*

***The African Wild is yours to discover.***