



DISCOVER

# The Okavango Delta



# Jewel of the Kalahari



A maze of sparkling lagoons, meandering channels and overgrown islands teeming with wildlife, Botswana's Okavango Delta lies like a sparkling jewel at the heart of the Kalahari Desert.

# Why visit the Okavango Delta?

Officially declared UNESCO's 1 000th World Heritage Site and one of the Seven Natural Wonders of Africa, the Okavango Delta is undeniably Botswana's crown jewel.



## 1

### AN UNEXPECTED WONDER

The broad Okavango River, which emanates from the Angolan highlands, sinks into the dry sands of the Kalahari Desert, creating a lush and waterlogged oasis. Known as the river that never finds the sea, the result of this is the most unexpected wonder – water present in a desert.



## 2

### A WATERY WILDERNESS

A variety of incredible water experiences is on offer in the Delta. Glide through a maze of clear channels and opaque lagoons on a traditionally made mokoro (dugout canoe), silently passing by unsuspecting wildlife, or cover a greater distance on a motorised boat. Sparkling channels teem with fish, while birds and frogs inhabit the reeded banks.



## 3

### ICONIC WILDLIFE SIGHTINGS

The Okavango Delta is home to a large number of species, including some that are specially adapted to the semi-aquatic lifestyle, like the elegant red lechwe and shy sitatunga antelope. Hippo are found in lagoons, while cheetah, leopard and African wild dog share the floodplains with elephant and buffalo.



## 4

### AN ABUNDANCE OF SPACE

Vast stretches of untouched, unfenced wilderness and unrivalled game viewing are what most guests love about the Okavango Delta. Leave the crowds behind, and enjoy a full day safari exploring this pristine wetland system brimming with abundant wildlife without seeing another vehicle.

# Why travel with &Beyond?

**1 TRAVEL WITH HEART**  
Our core ethos of "Care of the Land, Wildlife & People" drives all that we do. When you travel with us you make a meaningful contribution to the preservation of our world's cultures and wildlife, and leave with an opportunity to gain first-hand experience in some of our conservation and community initiatives.

**2 IN OUR HANDS**  
We are on call 24/7 to assist you throughout your journey. Over 2000 &Beyonders, including guides and ground logistic teams on three continents, means that you are in our hands from the moment you arrive to the moment you leave. Additionally, we offer a personal concierge service that is only a phone call away should you require any assistance at any point during your trip.

**3 FINEST GUIDES**  
We operate three ranger training schools and are renowned for having the most highly trained, professional and knowledgeable guides, rangers, naturalists and trackers, who offer intriguing cultural insights as well as interpretive wildlife experiences.

**4 TRAVEL EXPERTS**  
Big or small, we are all about tailoring trips around your specific interests and expectations. Our expert travel specialists are able to personalise a range of experiences for individual travellers, groups, families, wedding parties, and special interest groups.

**5 PERFECT MOMENTS**  
With journeys lovingly crafted of perfect moments, you will return from an &Beyond adventure feeling that nothing will take your breath away quite like this ever again. Our collection of signature experiences is often exclusive to &Beyond, ensuring a unique adventure.



**Eyes full of tears and hearts full of happiness in the best, time-honoured &Beyond traditions. It is impossible to exaggerate the brilliance of the experience you have given us. ”**

&BEYOND GUEST

DISCOVER THE OKAVANGO DELTA

# Travel Botswana and beyond

Botswana has an excellent travel network that makes it easy to reach any destination, by air or by road.



## GETTING TO THE OKAVANGO DELTA

SA Airlink offer daily scheduled flights from Johannesburg or Cape Town to Maun

Air Botswana have a flight from Johannesburg to Maun

Get around the Delta with Mack Air on a shared or private charter fixed-wing transfer flight

Helicopter transfers are also available with Helicopter Horizons

Access is via air from Maun into the Okavango Delta, followed by a road and/or boat transfer to camp if not arriving in a helicopter

## TRAVEL TIMES

JOHANNESBURG		CAPE TOWN		WINDHOEK		VICTORIA FALLS		KASANE		MAUN	
✈	14hrs 14mins (1 397,8 km) 2hrs 10mins										
✈	14hrs 14mins (1 397,8 km) 2hrs 05mins	14hrs 13mins (1 478,3km) 2hrs 10mins									
✈	14hrs 17mins (1 197 km) 1hr 40mins	Not recommended 2hrs 50mins		14hrs 10mins (1 427,4 km) N/A							
✈	13hrs 47mins (1 189,1 km) 1hr 50mins	Not recommended No direct flight		13hrs 3mins (1 346,1 km) No direct flight		1hr 9mins (81,9 km) 20mins					
✈	12hrs 18mins (1 123,8 km) 1hr 50mins	Not recommended 2hr 35mins		8hrs 21mins (810,0 km) 2hrs 25mins		8hrs 43mins (680 km) No direct flight		6hrs 25mins (607,6 km) 1hr			

## &BEYOND LODGES

### OKAVANGO DELTA

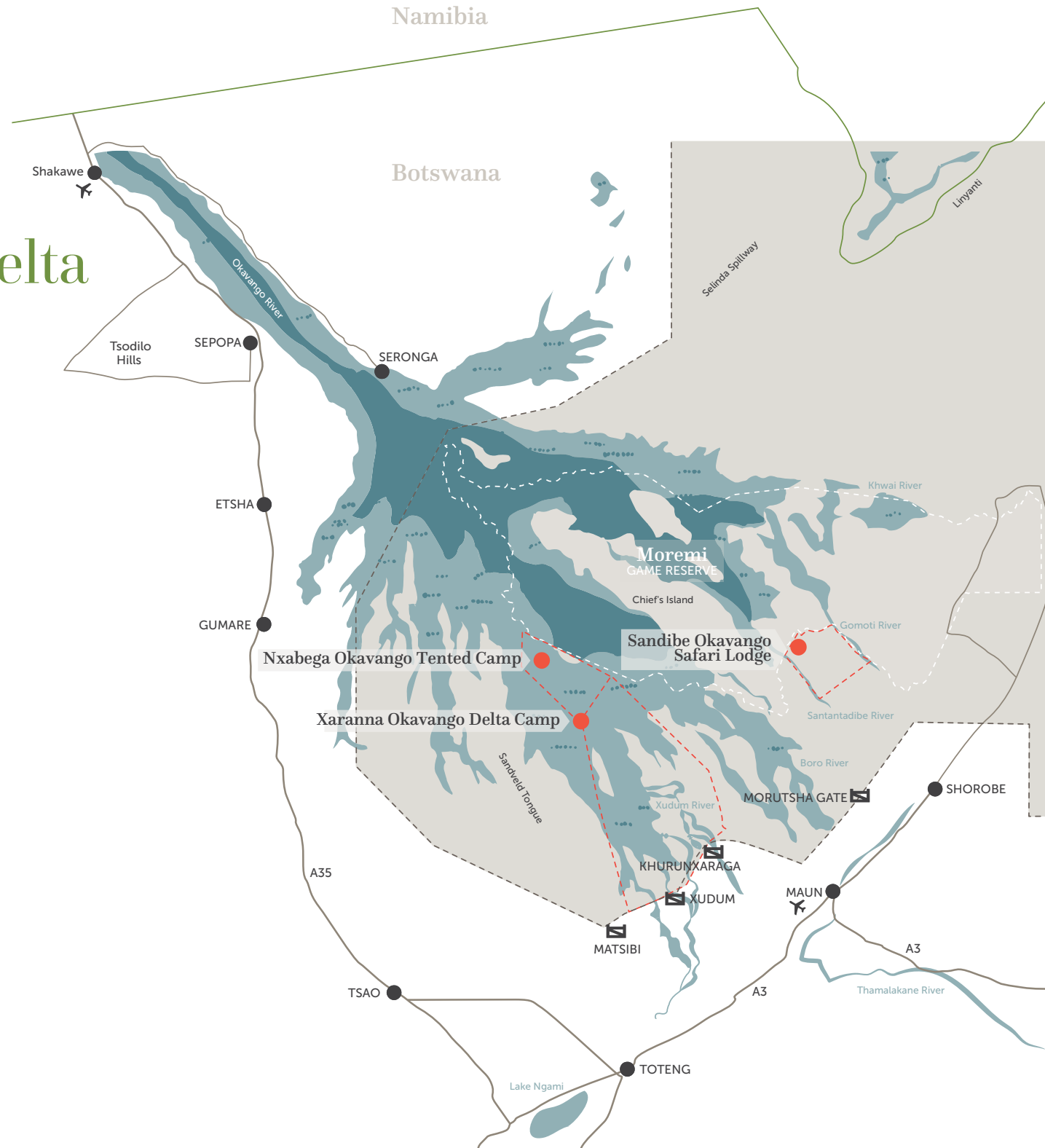
- 1 Sandibe Okavango Safari Lodge
- 2 Nxabega Okavango Tented Camp
- 3 Xaranna Okavango Delta Camp

### CHOBE NATIONAL PARK

- 4 Chobe Under Canvas
- 5 Savute Under Canvas

# Explore The Okavango Delta

- Permanent water
- Seasonal water
- Private concession
- Rivers
- BEYOND lodges
- Town / Village
- Main road
- Secondary road
- BEYOND concession
- Country border
- Buffalo fence
- Gate
- Airport



# Regional information

Altitude	930-1 000m / 3 051 - 3 281ft
Malaria area	The Okavango Delta is situated in a malaria area and necessary precautions should be taken
Airstrip / Helipad	Sandibe - Chitabe Airstrip; coordinates are S 19°27.268' and E 023°18.027' Nxabega; coordinates are S 19° 27' 50" and E 022° 46' 25" Xaranna - varies according to seasonal rainfall; coordinates are S 19°38.003' and E 22°53.998
Best time to travel	Year-round
Weather	Botswana has hot, wet summers from October to April. Winters (from May to September) are dry and cool and nights can be chilly.
Rainfall	The rainy season is from late December to late February, sometimes continuing into March, with rain generally in the form of afternoon thundershowers; average rainfall is approximately 500mm / 20"
Temperature averages	Summer: Average of 18°C to 32°C / 64°F to 90°F, although temperatures can rise over 40°C / 104°F Winter: 8°C to 21°C / 46°F to 70°F

**We had the most marvellous adventure with &Beyond in Botswana. We didn't want to leave and what made it truly memorable were the people. ”**

&BEYOND GUEST





BEYOND

DISCOVER THE OKAVANGO DELTA

# Adventures of a lifetime

Celebrated for its winding waterways, glassy lagoons and remote islands teeming with wildlife, its no surprise that nature lovers flock to the Delta.



## DISCOVER THE OKAVANGO DELTA

Adventures of a lifetime

# Land and sky experiences

A Botswana safari is an experience of a lifetime, and there is so much on offer in the Delta – from twice-daily game drives and walks, to the spectacular star-studded night skies.



## 1

### SAFARI GAME DRIVES

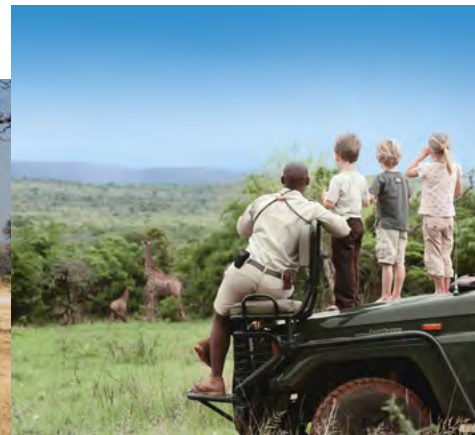
Enjoy twice-daily game drives that set off early in the morning or late in the afternoon (continuing after nightfall), in the company of local career guides who will do their best to ensure that all your wishes are met. You will be encouraged not only to go in search of the Big Five, but also to appreciate the wonderful array of flora and fauna dotted across the Okavango Delta.



## 2

### WALKING SAFARIS

If you're looking for a thrilling view from the ground, this is your chance to discover a multitude of natural wonders in the company of your experienced safari guide. Tread in the tracks of the Delta wildlife, breathe in the scent of crushed wild grasses, and feel your senses come alive.



## 3

### FAMILY SAFARIS

BEYOND offers a host of entertaining activities for children, bringing alive the magic of Botswana. Whilst on a family safari, you can rest assured that your children will always be safe and well cared for (both during activities and at the lodge). Every minute is supervised by our guides and lodge staff, who provide hours of amusement and invaluable information to the children in their care.



## 4

### PRIVATE SAFARIS

Tailored especially for you, this exclusive safari allows you to explore the Delta with your very own dedicated guides and vehicle. Game drives can be as long or as short as you wish, covering your personal interests, from the insect kingdom to great herds of buffalo or prides of lion. Meals can be savoured at the camp, or alternatively, enjoyed away from the lodge.

DISCOVER THE OKAVANGO DELTA  
Adventures of a lifetime

---

# Land and sky experiences



## 5

### PHOTOGRAPHY

Our expert guides will use their extensive experience in wildlife behaviour to try to get you into the best position for the shot of a lifetime. At &Beyond Sandibe Okavango Safari Lodge, our customisable vehicles come with charging points for camera equipment and camera bean bags on clamps, providing excellent support for any camera and lens combination.

---



## 6

### SCENIC HELICOPTER FLIGHTS

Take to the skies for a bird's-eye view over the Okavango Delta's signature of blue waters against the green and brown tapestry of papyrus fringed islands and open floodplains. From these heights, even those far-flung and inaccessible corners of the Delta can be seen, fully showcasing the incredible diversity of landscapes and wildlife.

---



## 7

### STARGAZING

Gaze at the Southern Hemisphere's night skies in complete awe. With little to no light pollution in the area, you will be amazed by what is above. Take a closer look at the planets and constellations with your guide while out on a drive, or sit out on your private deck at night and see if you are able to spot a lucky shooting star.

---



## 8

### BIRDING

Botswana is a top African birding destination, with the waters in the Okavango offering great year-round diversity. Guests flock to the area in search of several specials such as the Pel's fishing owl, African pygmy goose, lesser jacana and slaty egret, to mention just a few. Our knowledgeable guides enjoy the challenge of finding your particular favourites.

---

## DISCOVER THE OKAVANGO DELTA

Adventures of a lifetime

---

# Seasonal water experiences

Within the Delta, water levels change yearly. Enjoy these seasonal experiences at Nxabega Okavango Tented Camp and Xaranna Okavango Delta Camp.



## 1

### MOKORO ADVENTURES

Pastel-coloured lilies float upon verdant lily pads, butterflies captivate with their iridescent wings and tiny painted frogs cling to the reeds as you take to the tranquil waterways in a traditional mokoro (dugout canoe). Keep a careful look out for the variety of fish darting through the crystal-clear water below you.

---

## 2

### CATCH-AND-RELEASE FISHING

The best catch-and-release fishing excursions take place from ♻️Beyond Nxabega Okavango Tented Camp due to its proximity to the Panhandle region. Here, the Okavango River feeds into the labyrinth of channels and lagoons that makes up the heart of the Delta wetland. Try your hand at catching a variety of fish, including the predatory tiger fish.

---

## 3

### MOTORISED BOAT CRUISES

Explore the Okavango Delta's intricate network of winding channels and opaque lagoons on board a sleek, motorised boat that covers great distances, showcasing magnificent views of the watery landscape. The unique perspective from the boat offers great sightings of pods of hippos, wildlife attracted to the water's edge and beautiful birdlife.

---

DISCOVER THE OKAVANGO DELTA

Adventures of a lifetime

# Impact experiences

Everything we do at &Beyond is centred around our core ethos of 'Care of the Land, Wildlife and People' and we strive to provide a truly authentic experience.



## 1

### COMMUNITY VISIT

Enquire about this feel-good community excursion to the Sexaxa Village, outside of Maun. On the day of your departure, go see the work that &Beyond and Wild Impact\*, our long-standing community and conservation development partner, have completed at the Sexaxa School. It is with our guests' support that this inspiring project has flourished, and now young children no longer need to walk a total of 10km (6mi.) to get to and from school each day. Please note that this excursion depends on your departure time.

## 2

### BEHIND-THE-SCENES SUSTAINABILITY TOUR

We would love to show you our sustainability story. From installing the first solar power plant in the Delta at &Beyond Sandibe in 2014, to using a solar photovoltaic (PV) hybrid system at &Beyond Xaranna, the first of its kind in Botswana, with Tesla Powerpack Battery Energy Storage System technology. Audits, heating systems, water bottling plants, wastewater management - we're committed to reducing our direct carbon footprint.

## 3

### LOCAL CRAFTS

Browse through our Safari Shops and expect to find a range of quality, handpicked handicrafts and fashion wear that showcases the very best of Botswana. Peruse their range of excellent eco-souvenirs; a portion of your purchase will support local community or conservation initiatives. Don't leave without stunning hand-woven baskets, or intricate handcrafted Bushman décor.

\*Formerly Africa Foundation

DISCOVER THE OKAVANGO DELTA  
Adventures of a lifetime

# Seasonal highlights

## YEAR-ROUND ACTIVITIES

✓ Safari game drives	✓ Photography	✓ Wellness treatments**
✓ Walking safaris	✓ Scenic helicopter flights**	✓ Wild Impact community visit
✓ Family safaris	✓ Stargazing	✓ Back-of-house sustainability tour
✓ Private safaris**	✓ Birding	

## TIMING IS EVERYTHING

	JAN	FEB	MAR	APR	MAY	JUN	JUL	AUG	SEP	OCT	NOV	DEC
Mokoro adventures*	Nxa	Nxa	Nxa	Nxa	Nxa,Xar	Nxa,Xar	Nxa,Xar	Nxa,Xar	Nxa,Xar	Nxa,Xar	X	X
Motorised boat cruises*	Nxa	Nxa	Nxa	Nxa	Nxa,Xar	Nxa,Xar	Nxa,Xar	Nxa,Xar	Nxa,Xar	Nxa	Nxa	Nxa
Catch-and-release fishing*	X	X	X	Nxa	Nxa	Nxa,Xar	Nxa,Xar	Nxa,Xar	Nxa,Xar	Nxa	Nxa	Nxa

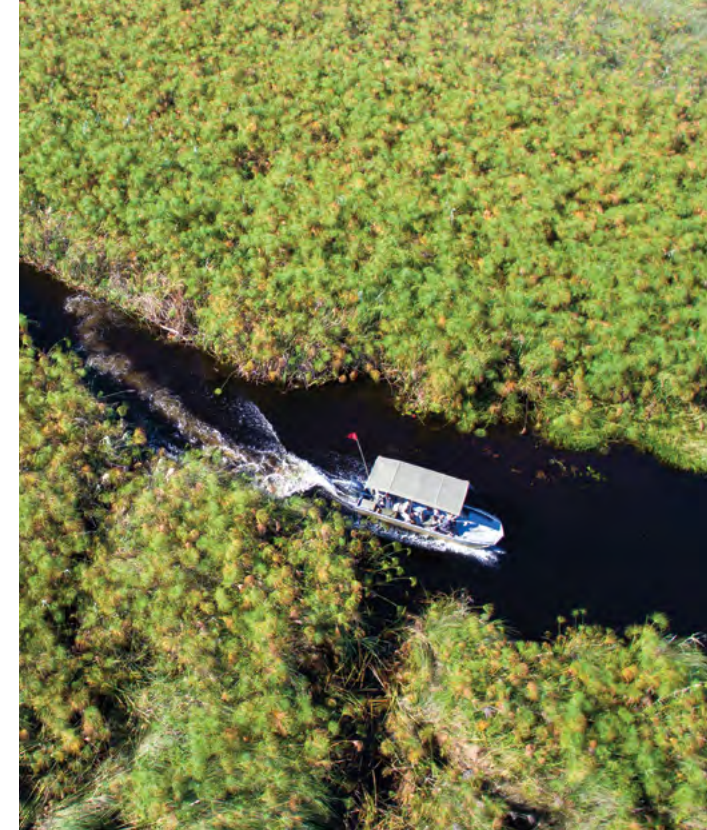
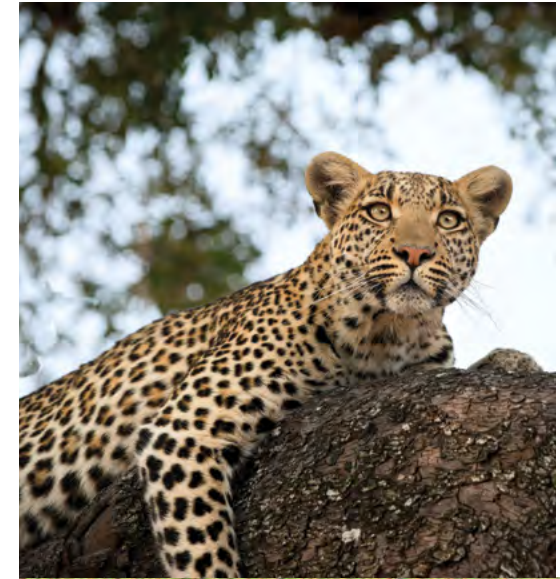
KEY | Nxa - &Beyond Nxabega Okavango Tented Camp; Xar - &Beyond Xaranna Okavango Delta Camp; X - Not available

\*This information is given based on data and can only be used as a reference because water levels change annually. Weather patterns are unpredictable.

\*\* This activity is at an additional cost

It is fair to say that we have been mind-blown by the overall experience. We loved it all and really felt like family. ”

&BEYOND GUEST



## DISCOVER THE OKAVANGO DELTA

Adventures of a lifetime

# WILDchild

The Okavango Delta is a wonderful playground for young ones to explore. 8Beyond offers a host of entertaining activities for children aged 3–12 years, bringing alive the magic of Botswana. Whilst on a family safari, you can rest assured that your children will always be safe and well cared for (both during activities and back at the lodge). Every minute can be supervised by our guides and lodge staff, who provide hours of amusement and invaluable information to the children in their care. Special children's menus are available and childminding services are available at an additional cost.

## CHILD POLICY

The below policy applies to children on shared game drives and water activities\*.

0-2 years	Not permitted on game viewing activities
3-5 years	Not permitted on game viewing activities; however, shortened children's game drives are available on request
6 years and older	Permitted on game drives (at the discretion of the camp manager)
12 years and older	Permitted on motorised boat cruises
16 years and older	Permitted on walking safaris and mokoro adventures

\* A private vehicle can be booked when staying with 8Beyond (subject to availability and at an additional cost) allowing children of all ages to participate in a game drive. Access to sightings will be at the discretion of the guide, based on the behaviour of both the child and animals. In the case of boating activities, the availability of boats may restrict private use and require forward planning.

\*\* Whilst there are age restrictions for children permitted on game viewing activities, all ages will be accommodated on game drive and boat transfers to-and-from the camp.

## WILDCHILD AT OUR CAMPS

Children visiting the lodges can take advantage of the funfilled and interactive WILDchild programme where they can participate in the following:

- Baking in the kitchen with lodge chefs
- Learning to identify tracks with their guide
- Bug finding missions
- Fishing
- Lily-necklace making
- Educational star gazing excursions

## FAMILY ACCOMMODATION

### Sandibe Okavango Safari Lodge

- Children welcome
- WILDchild programme
- 1 family suite (2 suites linked by an enclosed walkway)
- Max 2 adults + 2 children (3 children on special request)
- One triple suite available (children 16 years and younger)

### Nxabega Okavango Tented Camp

- Children welcome
- WILDchild programme
- 1 family tent (2 tents linked by an enclosed walkway)
- Max 2 adults + 2 children (3 children on special request)
- One triple tent available (children 12 years and younger)

### Xaranna Okavango Delta Camp

- Children welcome
- WILDchild programme
- One triple tent available (children 12 years and younger)

**Please note:** due to the lodge not being fenced off, children are required to have an adult accompanying them at all times.





DISCOVER THE OKAVANGO DELTA

# Lodge overview

Enjoy an unforgettable Botswana safari staying  
at a trio of our luxurious lodges and camps.

## DISCOVER THE OKAVANGO DELTA

Accommodation Overview

# Our lodges in the Okavango

&Beyond boasts three magnificent lodges and camps in the Okavango Delta, each with their own individual charm and character.

### &BEYOND SANDIBE OKAVANGO SAFARI LODGE

Drawing its inspiration from nature, &Beyond Sandibe Okavango Safari Lodge features a modern style that blends perfectly with the environment. Twelve elegant suites are elevated above the landscape and feature magnificent Delta views, as well as private plunge pools and cosy fireplaces.

### &BEYOND NXABEGA OKAVANGO TENTED CAMP

Ideally positioned to explore the magnificence of the Okavango Delta, nine ensuite tented suites offer an experience that is rugged yet luxurious, blending the remoteness of the breathtaking setting with absolute comfort and style.

### &BEYOND XARANNA OKAVANGO DELTA CAMP

Like the water lily from which it takes its inspiration, &Beyond Xaranna Okavango Delta Camp is a serene, stylish and playful camp with just nine ensuite tents, offering an exclusive experience steeped in this extraordinary ecosystem.



TENTED SUITE AT XARANNA



TENTED SUITE AT NXABEGA



SUITE AT SANDIBE



## FAST FACTS

### Sandibe

- 12 suites (including one family suite)
- Family friendly, WILDchild programme
- Equipped gym, massage room and Safari Shop
- Private plunge pools
- Interactive kitchen

### Nxabega

- 9 ensuite tented suites, (including one family tent) set on suspended platforms
- Private verandas with a spacious sitting area and sala
- Massage room
- Interactive food and coffee bar
- Al fresco dining in an open air boma

### Xaranna

- 9 ensuite tented suites
- Private plunge pools
- Secluded salas ideal for relaxing massages
- Outdoor and indoor showers
- Al fresco dining in an open air boma





DISCOVER THE OKAVANGO DELTA

# Lodge comparison

A quick reference comparing Sandibe, Nxabega and  
Xaranna - each with their own unique personality.

DISCOVER THE OKAVANGO DELTA

Lodge comparison

# Lodge comparison

## OVERVIEW

	SANDIBE	NXABEGA	XARANNA
Lodge experience	Exceptional game viewing with customisable vehicles, unique lodge design	Contemporary safari elegance found within a water wonderland	A wellness retreat immersed within the heart of the Okavango Delta
Maximum number of guests	24	18	18
Number of rooms	12	9 + pilot's room	9
Family accommodation	1 family suite	1 family tent	None
WILDchild programme	Yes	Yes	Yes
Room types	Suites	Tented suites	Tented suites
Distance between rooms	Approx. 30m (98ft)	Approx. 20m (66ft)	Approx. 30m (98ft)

## FACILITIES

Power	220v AC	220v AC	220v AC
Internet access	Yes, Wi-Fi in guest suites only	Yes, Wi-Fi in tented suites only	Yes, Wi-Fi in tented suites only
Wine store or cellar	Yes	No	No
Boma	Yes	Yes	Yes
Interactive kitchen	Yes	Yes	No
Swimming pool	No	Yes – camp swimming pool, not heated	No
Wellness offering	Healing Earth treatments offered in massage room or in guest suite	Healing Earth treatments offered in massage room or in guest tented suite	Healing Earth treatments in-room or at tented suite sala
Fitness options	Equipped gym with Delta views	Gym-in-a-basket available in-room	Gym-in-a-basket available in-room
Conference facilities	Yes (limited)	No	No
Wheelchair accessibility	No	No	No
Complimentary laundry service	Yes	Yes	Yes
BEYOND Safari Shop	Yes	Yes	Yes

DISCOVER THE OKAVANGO DELTA

Lodge comparison

# Accommodation comparison

	SANDIBE	NXABEGA	XARANNA
Room size	100m <sup>2</sup> / 1076ft <sup>2</sup>	79m <sup>2</sup> / 850ft <sup>2</sup>	94m <sup>2</sup> / 1012ft <sup>2</sup>
Room configuration	12 suites (max 2 adults)	9 tented suites (max 2 adults) + pilot's room	9 tented suites (max 2 adults)
Private veranda	Yes	Yes	Yes
Private plunge pool	Yes	No	Yes
Personal bar	Yes	Yes	Yes
Air conditioning / heating	Yes	Yes	Yes
Overhead fans	Yes	No	No
Mosquito nets	Yes	No (sealed room)	Yes
Bath	No	No	Yes
Shower	Indoor and outdoor shower	Indoor and outdoor shower	Indoor and outdoor shower
Seperate W.C	Yes	Yes	Yes
Telephone	Yes	Yes	Yes
Hairdryer	Yes	Yes	Yes
Internet access	Yes	Yes	Yes
In-room safe	Yes	Yes	Yes
Plug type	220V AC Plug Type C, D Adapters available	220V AC Plug Type C, D, M, N Adapters available	220V AC Plug Type C, D Adapters available
Triple bed option	Yes	Yes	Yes
Twin bed option	Yes	Yes	Yes
Double bed option	Yes	Yes	Yes
Interleading door	In family suite only	In family tent only	No
Wheelchair accessibility	Not suitable for those with mobility issues	Not suitable for those with mobility issues	Not suitable for those with mobility issues

# Sustainability initiatives

In partnership with Wild Impact\*, our long-standing community and conservation development partner.



## CARE OF Land

- 155 856 plastic water bottles eliminated per year in Botswana as a result of on-site lodge bottling plants
- 2 670 tons of concrete removed from the Okavango Delta
- Hybrid solar power plant systems in operation at our Botswana lodges have the capacity to supply up to 80% of the lodges' energy requirements.
- Our Sandibe solar power plant (installed in 2014) was the first of its kind in Botswana, and the second on the African continent
- Nxabega and Xaranna lodges utilise the cutting edge Tesla Powerpack system
- All our Botswana lodges have sophisticated, environment-friendly above-ground wastewater treatment systems
- Progressive reduction of our direct carbon footprint through a system of Group goals, measured by annual lodge audits



## CARE OF Wildlife

- Long-term support of the WildCRU Trans-Kalahari Predator Programme, based out of the University of Oxford, which aims to identify and protect wildlife corridors in Botswana
- Support of the Botswana Predator Conservation Trust with their African Wild Dog Dispersal Study – a project that is fundamental to the management and conservation of this endangered species
- Rhinos Without Borders – a collaboration between ♻️Beyond and Great Plains Conservation – has translocated 93 rhino from South Africa to Botswana, with the new source population now numbering well over the target of 100. The significant number of calves born is testimony to the success of this conservation initiative.



## CARE OF People

- 94% of our staff complement are local Botswana citizens; an average of over 100 training interventions annually
- 89% of our Botswana lodge operational expenses currently support local businesses
- The phased development of the Sexaxa Primary School, 2012 – 2020, a long-term commitment by Wild Impact and ♻️Beyond to a community-identified project
- Wild Impact's CLEF (Community Leaders Education Fund) tertiary bursary programme was introduced in 2019, with 6 bursaries granted to 5 rural students to date.
- Two new boreholes installed, providing a stable source of clean water to the isolated communities of Gogomoga and Tsutsubega
- Our COVID-19 impact and response: total of BWP 393,073 raised to support water access, food relief and masks for school children



andBEYOND



@andbeyondtravel  
#seewhatliesbeyond

andBeyond.com

**GENERAL ENQUIRIES**  
+27 11 809 4300  
[contactus@andBeyond.com](mailto:contactus@andBeyond.com)

---

**REGIONAL ENQUIRIES**  
[africa.reservations@andBeyond.com](mailto:africa.reservations@andBeyond.com)  
[southasia.reservations@andBeyond.com](mailto:southasia.reservations@andBeyond.com)  
[southamerica.reservations@andBeyond.com](mailto:southamerica.reservations@andBeyond.com)

---

**PRESS ENQUIRIES**  
[media@andBeyond.com](mailto:media@andBeyond.com)

---

**TRAVEL TRADE**  
[enquiry@andBeyond.com](mailto:enquiry@andBeyond.com)

---