

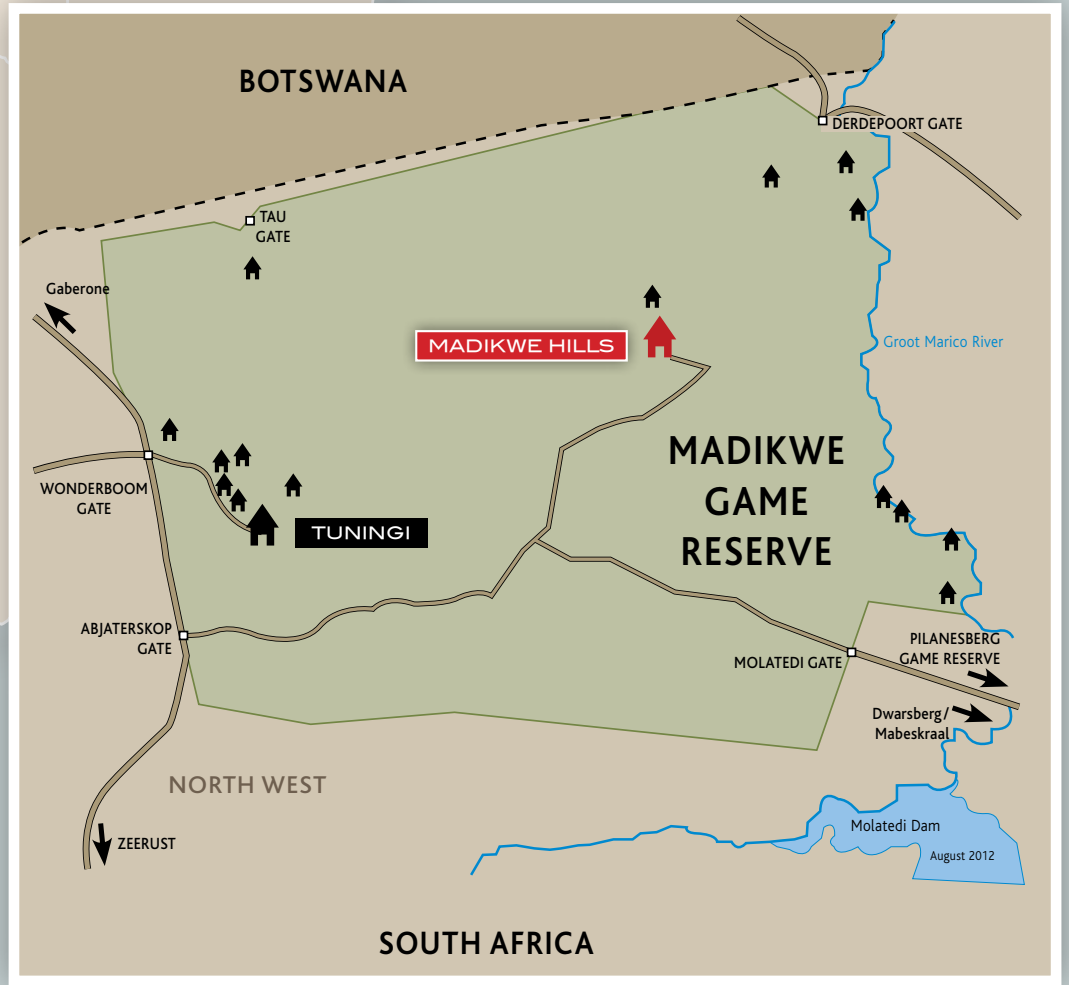
MADIKWE HILLS

PRIVATE GAME LODGE

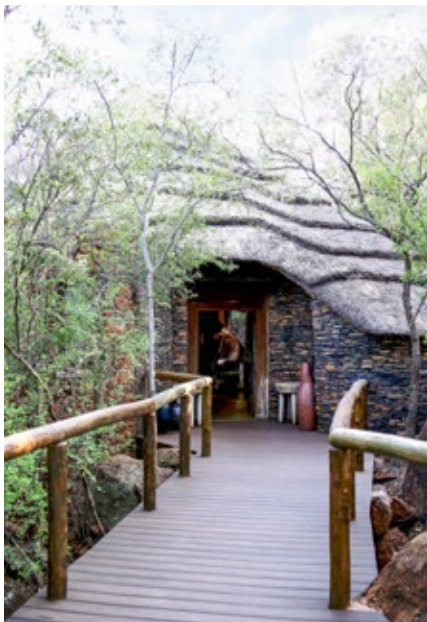
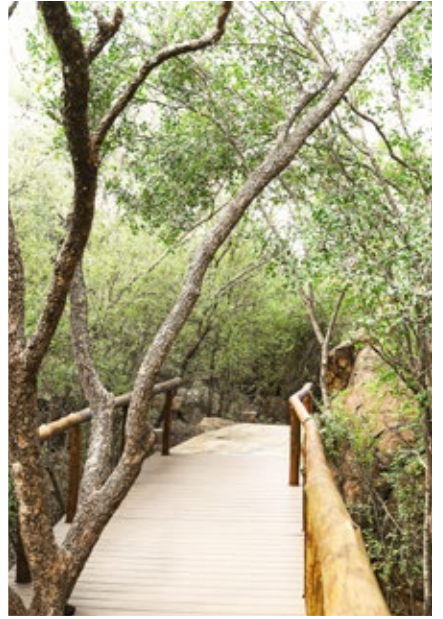
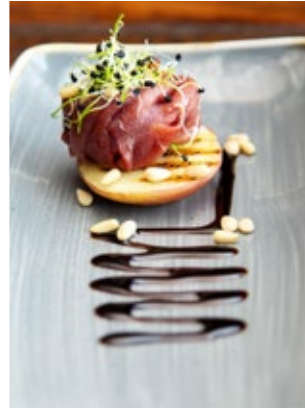


MADIKWE HILLS PRIVATE GAME RESERVE | NORTH-WEST PROVINCE

www.madikwehills.com



PLEASE NOTE: Drones are **STRICTLY PROHIBITED** in the Madikwe Game Reserve, failure to comply with this rule will result in a heavy fine or arrest by reserve management.



MADIKWE HILLS

PRIVATE GAME LODGE



Traversing over 75 000 hectares, Madikwe Hills Private Game Lodge is situated on a hill, in the heart of the malaria-free Madikwe Game Reserve.

Ingeniously set amongst boulders and age-old Tamboti trees, the lodge offers visitors the utmost in luxury and hospitality, where you will find yourself enchanted by a world of intrigue and majestic beauty.



LOCATION

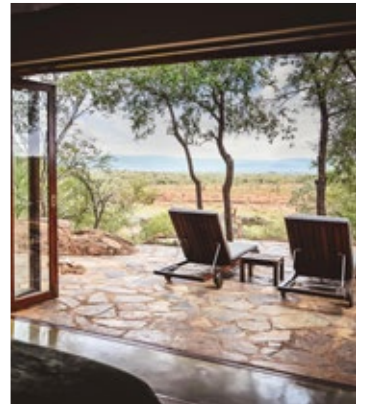
- Madikwe Game Reserve – North West Province.
- 4½ hours from Johannesburg/Pretoria.

ACCOMMODATION

MAIN CAMP

- 10 Secluded glass fronted suites (±150m² each)
- Uninterrupted views of the African bush
- Private deck with plunge pool
- Air-conditioning
- Fans
- Fireplaces
- Fully stocked mini-bar
- Coffee machine
- Indoor and outdoor showers
- Mosquito nets
- Private lounge
- Complimentary, unlimited Wi-Fi
- Room Safes







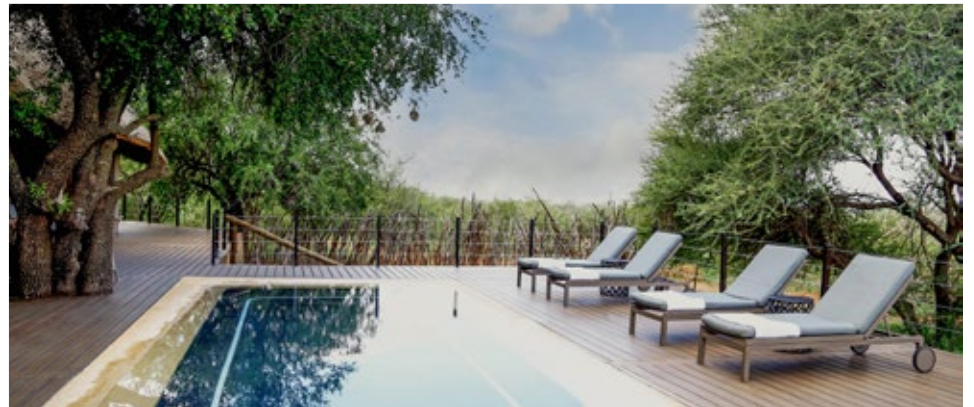
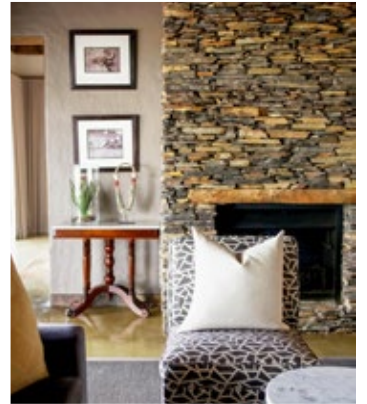
ACCOMMODATION

LITTLE MADIKWE (Family Friendly Camp)

Little Madikwe comprises of a 2 Bedroomed Suite ($\pm 390\text{m}^2$). An additional 2 Luxury Suites ($\pm 150\text{m}^2$) can be reserved to form a completely private camp accommodating up to 8 guests.

- Private deck and swimming pool
- Air-conditioning and fans
- Fireplaces
- Fully stocked mini-bar
- Coffee machine
- Indoor and outdoor showers
- Mosquito nets
- Private lounge, verandah and dining room
- Private kitchen with personal chef – set your own meal time
- Private game drive vehicle with field guide and tracker – set your own game drive time
- Villa attendant/child minder
- Entertainment centre
- Satellite television
- Various kiddies DVD's and children's games
- Small library
- Complimentary, unlimited Wi-Fi
- Suite Safe



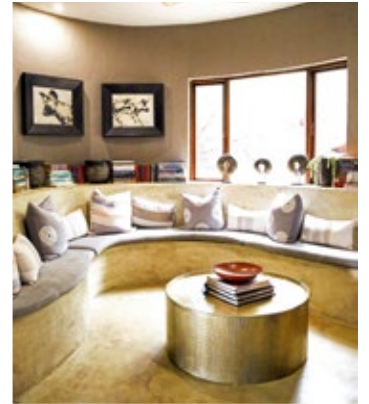




FACILITIES

- Lounge
- Dining Room
- Bar
- Wine Cellar
- Local wines
- Terraced viewing deck with umbrellas overlooking waterhole
- Swimming Pool
- Cosy TV room with satellite TV and a selection of books
- Traditional Boma
- Complimentary, unlimited Wi-Fi

- **CURIO SHOP**
Well stocked with books, clothing, safari gear, handmade knives, shoes, bags, jewellery, postcards and local arts & crafts. More than half of the items in the curio shop comes from Community Projects, helping and benefiting the communities who make these beautiful pieces of art.





WELLNESS

Enjoy a unique spa treatment based on the study of Africa, Africology, which encapsulate the behaviour, experiences and the healing potential of Africa. Set the mind at ease and embrace the energy of the bush. Experience the soul of Africa, not just through an emotional, but also a physical wellness. Africology brings ancient wisdom to today's world, by using some of South Africa's indigenous healing plants, namely Rooibos, Aloe Ferox, Marula and African potato.

SPA TREATMENTS

THERAPEUTIC MESSAGES			SKIN ADORATION WRAPS (incl. exfoliation)	
Intuitive Herbal Oil	Back	30min	African Potato Body Wrap	120min
	Body	60min		
Shea Aromatherapeutics	Body	75min	Coffee and Mint Body Wrap	120min
Intonga Deep Tissue	Body	60min	Rooibos and Lavender Wrap	120min
Hot Stone Massage	Body	75min	HANDS & FEET	
African Head Massage	Head, neck & shoulders	30min	Standard Manicure	75min
African Foot Ritual – incl soak & exfoliation		30min	Standard Manicure with gel	90min
FACIAL EXPERIENCES			Mini-Pedicure	45min
Africology Bespoke Facial		60min	Standard Pedicure	75min
African Goddess Facial & Back massage		90min	Standard Pedicure with gel	90min
Tinting: lashes, brows or both		30min	Soaking off of gel	30min

FULLY EQUIPPED GYM

The fully equipped air-conditioned gym at Madikwe Hills, with treadmill, spinning bike, rowing machine, elliptical trainer, cross-cable machine, dumbbells and barbells and aerobic mats, allows guests to keep up with their fitness regime, or a place to release the guilt built up after indulging in mouth-watering delights.



WEDDINGS

There is something about a wedding in the heart of the African bushveld that cannot be forsaken! Small intimate weddings from two up to twenty-four guests are catered for at Madikwe Hills, and we pride ourselves on our meticulous attention to detail.

At Madikwe Hills, we like to keep things simple, but exceptional...

THIS PACKAGE INCLUDES:

- Ceremony in the heart of the bushveld / main deck of the lodge.
- Witnesses at the ceremony (lodge staff).
- South African Methode Cap Classique sparkling wine for the couple.
- Single layer wedding cake with decoration of choice.
- 30 minute massage for bride and groom.
- Transportation of Bridal couple from lodge to ceremony if in the bush.
- Traditional Tswana dancers to perform at the ceremony.
- Assistance with make-up.
- Wedding turn-down.
- Wedding gift for the bridal couple, courtesy of Madikwe Hills.
- A bouquet and bunch of Local flowers of your choice.

THIS PACKAGE EXCLUDES:

(To be quoted on request)

- PREPARATION AND PROCESSING OF ALL LEGAL DOCUMENTS.
- The Minister and his/her travel
- Photographer, hairdresser, make-up artist and additional beauty treatments.
- Accommodation.
- All Beverages.
- Flowers of your choice.

LEGALITY OF FOREIGN WEDDINGS IN SOUTH AFRICA

The law in South Africa requires a foreign couple to attend an appointment at the Department of Home Affairs before they can be legally married in South Africa. Since this is quite a cumbersome task for someone on safari, we suggest that you process all legal marriage documents in your home country and enjoy your ceremony on safari in a more traditional way.





ACTIVITIES

Madikwe Game Reserve is about 75 000 hectares of bushland stretching all the way up to the Botswana border, and is one the largest and most popular game reserves in South Africa.

Once farm land, the Reserve has now been restored to its former natural environment with 86 mammals (from mice to elephant), 420 bird species (110 being rare) and 104 tree species. Predominantly grasslands and bushveld, intermingled with lone mountains and rocky outcrops, the Reserve is home to cheetahs, wild dogs, leopards, hyenas, lion, elephant, black & white rhino, buffalo, zebra, giraffe and various antelope.

- Two 3-hour game drives a day (morning and afternoon)
- 'Big 5' game viewing in state-of-the-art game-viewers
- Tea, filter coffee and biscuits on morning game drive
- Drinks and refreshments on afternoon game drive
- Bush breakfasts and dinners on request for larger groups
- Archery
- Fishing





JUNIOR RANGERS & KIDDIES

JUNIOR RANGER PROGRAMME

The Rangers are given “funwork” not “homework”, a booklet they can complete before or during the afternoon drive which is marked and each child receives a certificate stating they are a Junior Ranger of Madikwe Hills. This programme can be run for 1 – 2 hours in one day, or if the guests are staying for more than two nights it can be broken up into two days. The fun never stops at Madikwe Hills.

Some of the exciting things on offer for the Juniors while on safari in the Madikwe Hills Game Reserve in South Africa.



- Madikwe Hills Lucky Packet on arrival at the Lodge
- Face Painting - become your favourite safari animal
- Bug Finding
- Create My Tree Artwork
- Treasure Hunt
- Movie Night
- Animal Dung Investigation
- Face Mask Painting
- Clay Modelling Class
- Cup Cake Baking



Bopa Monyetla
CREATING OPPORTUNITIES

COMMUNITY DEVELOPMENT INITIATIVES

Madikwe Hills is very proud to play a prominent, active role in the upliftment of the local communities around Madikwe Game Reserve. Madikwe Hills supports Bopa Monyetla, a Non-Profit Organisation. Bopa Monyetla means “Creating Opportunities” and was founded by Madikwe Hills’ most regular guest, Jo Roux (currently the CEO). Hannes Kruger (General Manager of Madikwe Hills) is on the board of directors.

At Bopa Monyetla our hope is to gain the understanding, endorsement and support from the local communities for conservation measures within the Game Reserve. This will be achieved by providing education and training to enhance the skills sets of the youth and adults in the area. Moreover, by integrating local economic development through the establishment of Small Medium Micro Enterprises (SMMEs) an increase in per capita income will bring about social benefits to these communities.

To read more about Bopa Monyetla please visit www.monyetla.org

RATES ARE QUOTED

- Inclusive of VAT
- In South African Rands
- Subject to availability

TARIFFS CHANGES

- All tariffs quoted are subject to change, without prior notice, however rates quoted for confirmed bookings will be honoured.

RATES INCLUDE

- Luxury accommodation
- Two game drives per day
- Three meals daily
- Tea / Coffee
- A wide selection of local beverages, house wines & spirits
- High tea canapés & snacks
- Selection of Fruit Juices
- Laundry service
- Road transfers from the Madikwe Airstrip to the lodge
- Optional walking safaris

RATES EXCLUDE

- Curio shop purchases
- Cellar wines and premium spirits
- Telephone calls
- Spa treatments
- Lodge transfers
- Airport Tax
- Park Entry Fees – Road & Air (*Entrance and landing fees are subject to change without prior notification*)
- Conservation Fee

PROVISIONAL RESERVATIONS

- All provisional reservations will be automatically released if not confirmed within 2 weeks of booking being made.

PAYMENT

- A deposit of 20% of the total accommodation charge is required to confirm a provisional reservation and full payment is required 45 days prior to arrival.
- Tour operators electing to settle a booking with a credit card will be subjected to a 5% surcharge. Ideally bookings should be settled via EFT.
- Deposit conditions may be wavered for bookings from the trade, tour operator and agents at the Lodge's discretion.
- Extras may be settled in camp.
- We accept all credit cards.
- We do not accept travellers cheques.
- **PEAK SEASON TERMS AND CONDITIONS:**
Peak: 20 December until 5 January. All Bookings over Christmas and New Year's Eve can only be secured once a 20% non-

refundable deposit has been paid.

GROUP RESERVATIONS:

Should the reservations department require the accommodation that is being held by the group for the same dates, we will request the group to supply us with an immediate 20% non-refundable deposit. A booking of 8 guests or more is classed as a group booking.

CANCELLATION POLICY

Our cancellation policy is as follows:

- > 45–30 days – 50% of full amount
 - > 30–15 days – 75% of full amount
 - >14 days or less – 100% of full amount
- 20% Non-Refundable for group of 4 suites or more
20% Non-Refundable between 20 Dec & 05 Jan (Peak Period)
Cancellation is effective only when advice is received in writing by our reservation office. Bookings are not transferable.

CHILDREN

- At Main Camp children over 10 will be accepted (one child may share a suite with 2 full paying adults) and pay 50% of the adult sharing rate. Adults and the child will share a row on the game drive vehicle.
- Little Madikwe - Our Family Suite can accommodate children of any age.
- Babysitters are available.

WHAT TO TAKE

- Comfortable walking shoes
- Sun hat, sunglasses and sunblock
- Cameras and binoculars
- Light, neutral coloured clothing
- Bathing suit
- Warm jackets essential in winter (May – Oct)

DRONES

Drones are **STRICTLY PROHIBITED** in the Madikwe Game Reserve, failure to comply with this rule will result in a heavy fine or arrest by reserve management.

ARRIVAL/DEPARTURE

- Guests may arrive any time from 14h00
- Rooms are to be vacated by 11h00

HOW TO GET TO THERE

- 50 minute scheduled flight direct from Johannesburg to Madikwe Game Reserve landing fee can be settled at the lodge - subject to change.
- Johannesburg to Madikwe Hills via Zeerust / Abjaterskop

Gate (see following page) ±4.5 hours drive (±330 km).

- Complimentary road transfer from the Madikwe Hills airstrip to the lodge.

Gates open at 06h00 and closes at 21h00. Entrance fee by Road can be settled at the lodge - subject to change.

Please be advised that guests driving to the lodge who arrive after sunset will not be allowed to self drive in the reserve. The lodge will send a representative to escort guests to the lodge at an additional cost.

LODGE GPS CO-ORDS: S-24° 43' 28.3" E 26° 20' 49.6"

(-24.724731 26.34706) *Please do not follow your GPS after Zeerust / Sun City as it will take you on the wrong roads.*

Please note we require a 25% deposit in order to secure a ground or air transfer.

AIRSTRIP: Runway Length - 1200 meters tarred (No jet engines allowed) Runway Heading - 11/29

GPS CO-ORDS: S-24° 44' 0" E 26° 24' 48.9"

RESERVATIONS

TELEPHONE +27 (0)11 781 5431
E-MAIL reservations@madikwehills.com

CENTRAL RESERVATIONS

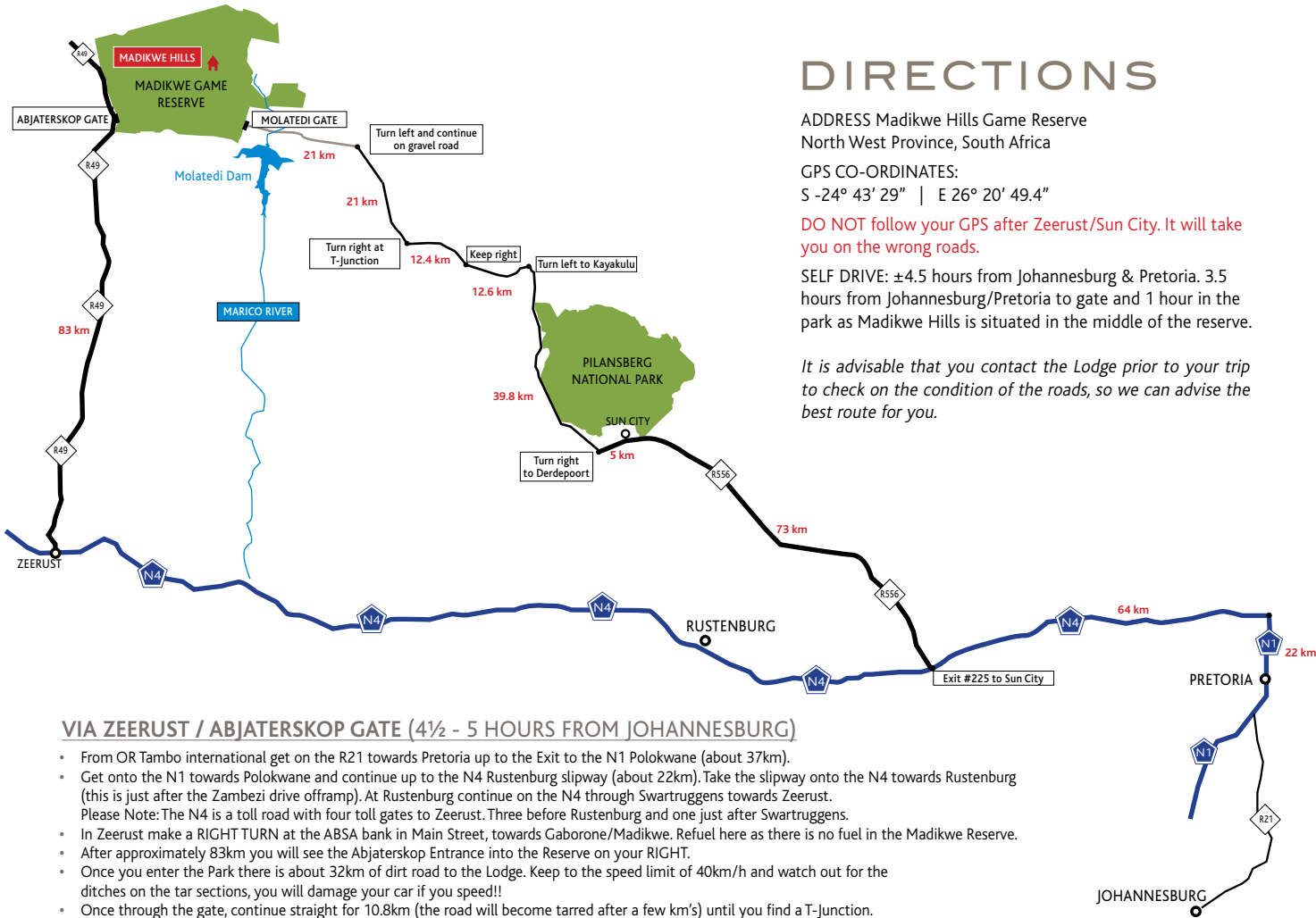
TELEPHONE +27(0)13 750 0943
MOBILE +27(0)63 026 4041
E-MAIL lodgereservations@seasonsinafrica.com

LODGE

MANAGER Hannes Kruger
TELEPHONE +27(0)18 350 9200
MOBILE +27(0) 81 085 5729
+27(0)78 522 9987
E-MAIL hannes@madikwehills.com
WEBSITE www.madikwehills.com
WEB BLOG www.madikwehills.com/blog
ADDRESS PO Box 551, Zeerust, 2865

BANKING DETAILS

ACCOUNT NAME Madikwe Partnership
BANK ABSA Bank
BRANCH CODE 331155
ACCOUNT NUMBER 4058805006
TYPE OF ACCOUNT Cheque
VAT NUMBER 4960213082



DIRECTIONS

ADDRESS Madikwe Hills Game Reserve
North West Province, South Africa

GPS CO-ORDINATES:
S -24° 43' 29" | E 26° 20' 49.4"

DO NOT follow your GPS after Zeerust/Sun City. It will take you on the wrong roads.

SELF DRIVE: ±4.5 hours from Johannesburg & Pretoria. 3.5 hours from Johannesburg/Pretoria to gate and 1 hour in the park as Madikwe Hills is situated in the middle of the reserve.

It is advisable that you contact the Lodge prior to your trip to check on the condition of the roads, so we can advise the best route for you.

VIA SUN CITY / MOLATEDI GATE

(±4 HOURS FROM PRETORIA)

The gravel road on this route makes it a little bumpy but not impassable in a sedan vehicle and it is shorter than the route through Zeerust. It is advisable to fill up with fuel at the Sun Village, just after the Sun City entrance on the right, since there is no fuel available inside the reserve. Take the shortest route to Sun City, otherwise follow directions below:

- From the OR Tambo International Airport, get onto the R21 towards Pretoria up to the Exit to the N1 Polokwane.
- Get onto the N1 towards Polokwane and continue up to the N4 Rustenburg slipway about 22km). Take the slipway onto the N4 towards Rustenburg (just after the Zambezi drive offramp).
- Continue in the direction of Rustenburg – take exit #225 which is the R556 Sun City/Majakangeng. (About 64km)
- Turn right at the off ramp and continue straight to Sun City (approx 73km to Sun City from this off ramp). After passing Sun City on the right, continue straight (approximately 5km) until you reach a four-way junction. TURN RIGHT to DERDEPOORT.
- Continue for 39.8km. Turn left at the sign saying KAYAKULU
- After 12.6km the road will split- Keep RIGHT.
- After 12.4km you will reach a T-Junction. Turn RIGHT
- After 21km, turn LEFT. The tar road will end and turn into a dirt road.
- Continue straight along this road for about 21km of gravel, (do not take the next Derdepoort turning to the right, continue straight), passing through the Molatedi Village over the Marico River and straight to the MOLATEDI GATE entrance into the Park.
- Once through the gate, keep to the speed limit of 40km/h and watch out for the ditches on the tar sections, you will damage your car if you speed!!
- Carry on straight for about 11.9km until you find a sign post on your left, shortly after the road became tar – TURN RIGHT towards Derdepoort gate. After 540m, you'll find a T-junction – TURN RIGHT onto Derdepoort Main Road towards Derdepoort Gate.
- Carry on straight on this road for 10.1km until you find a 4 way crossing. **(you will see the following during the 10.1kms:)**
 - > After about 500m the tar will end.
 - > After +- 2.5km you will pass Moseletsha's entrance to your left.
 - > After about 1.5km you will go down a steep hill (once again tarred, in between two mountains – watch out for the Klipspringers, small antelope).
 - > 3km later there will be a big Palm Tree on your left.
 - > 2.7km later you will reach the 4 way crossing.
- The road will split immediately after the 4 way crossing. Keep to the RIGHT.
- After 1.4km the road will join again and 1.2km after the join you need to TURN LEFT – there is a sign saying "Etali, Ukutula and Madikwe Hills".
- After 2.5km the road splits – KEEP LEFT
- Drive for 1.9km, passing Ukutula entrance and Etali Entrance and TURN LEFT in front of the "Madikwe Hills" sign (brass letters on a wooden log).

VIA ZEERUST / ABJATERSKOP GATE (4½ - 5 HOURS FROM JOHANNESBURG)

- From OR Tambo international get on the R21 towards Pretoria up to the Exit to the N1 Polokwane (about 37km).
- Get onto the N1 towards Polokwane and continue up to the N4 Rustenburg slipway (about 22km). Take the slipway onto the N4 towards Rustenburg (this is just after the Zambezi drive offramp). At Rustenburg continue on the N4 through Swartruggens towards Zeerust. Please Note: The N4 is a toll road with four toll gates to Zeerust. Three before Rustenburg and one just after Swartruggens.
- In Zeerust make a RIGHT TURN at the ABSA bank in Main Street, towards Gaborone/Madikwe. Refuel here as there is no fuel in the Madikwe Reserve.
- After approximately 83km you will see the Abjaterskop Entrance into the Reserve on your RIGHT.
- Once you enter the Park there is about 32km of dirt road to the Lodge. Keep to the speed limit of 40km/h and watch out for the ditches on the tar sections, you will damage your car if you speed!!
- Once through the gate, continue straight for 10.8km (the road will become tarred after a few km's) until you find a T-Junction. TURN LEFT (There will be a sign stating Derdepoort, left)
- After 2km TURN RIGHT at the sign saying Park Admin (if the road became dirt again you went too far)
- Drive for 1km, past the entrance to Park Admin and TURN LEFT at the sign saying Derdepoort, Left
- After 540m, you'll find a T-junction – TURN RIGHT onto Derdepoort Main Road towards Derdepoort Gate.
- Carry on straight on this road for 10.1km until you find a 4 way crossing. **(you will see the following during the 10.1kms:)**
 - > After about 500m the tar will end
 - > After about 2.5km you will pass Moseletsha's entrance to your left
 - > After about 1.5km you will go down a steep hill (once again tarred, in between two mountains – watch out for the Klipspringers, small antelope)
 - > 3km later there will be a big Palm Tree on your left
 - > 2.7km later you will reach the 4 way crossing
- The road will split immediately after the 4 way crossing. Keep to the RIGHT.
- After 1.4km the road will join again and 1.2km after the join you need to TURN LEFT – there is a sign saying "Etali, Ukutula and Madikwe Hills"
- After 2.5km the road splits – KEEP LEFT
- Drive for 1.9km, passing Ukutula entrance and Etali Entrance and TURN LEFT in front of the "Madikwe Hills" sign (brass letters on a wooden log)