

Singita

A SMOOTH JOURNEY FROM START TO FINISH

South Africa



Welcome to Singita's award-winning lodges & camps in South Africa



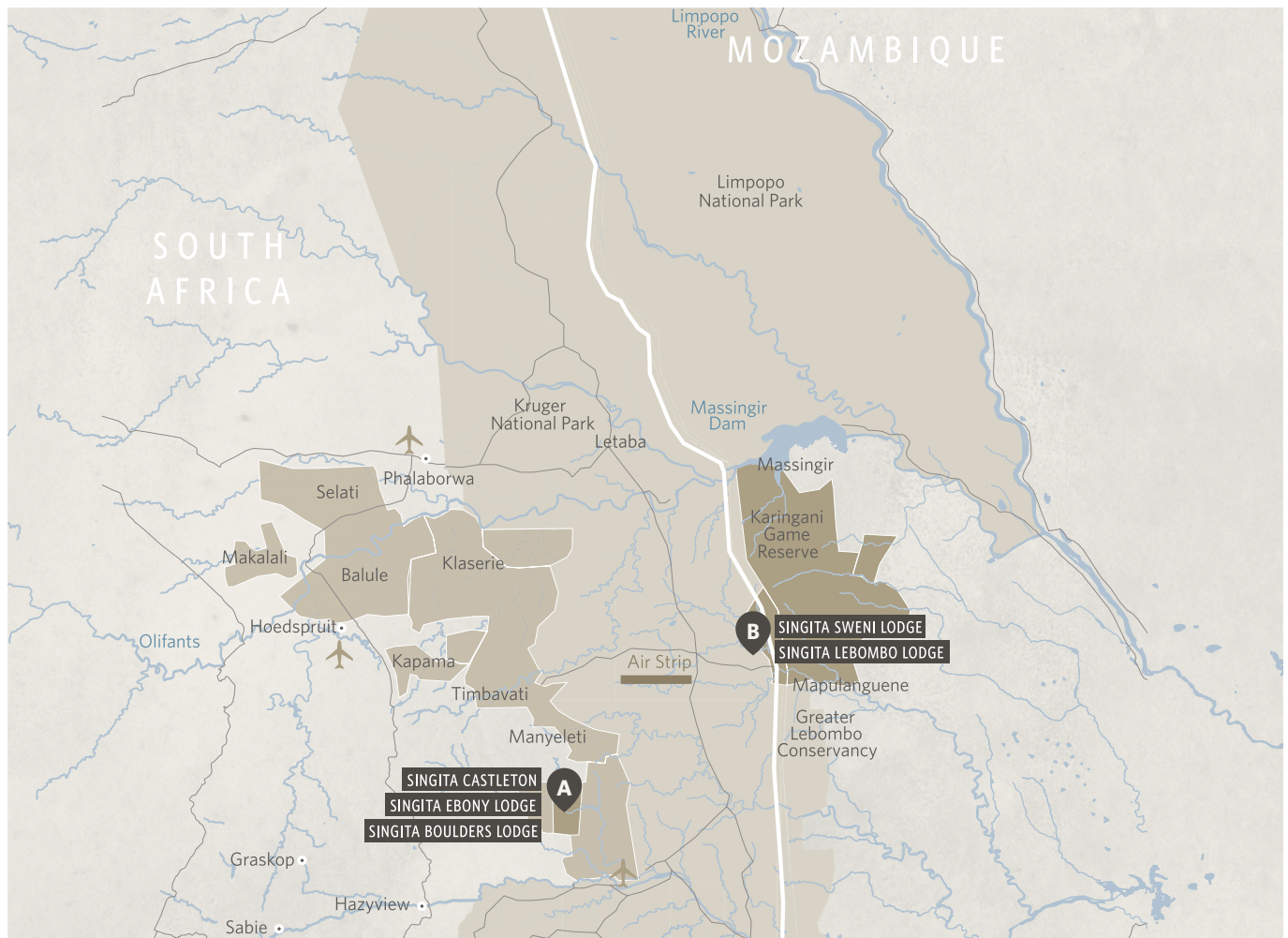
Please take the time to read though this document thoroughly before embarking on your trip as it contains important information about travelling to and within South Africa for a safari with Singita.

Contents

| | |
|----------------------------|----|
| REGIONS & RESERVES | 4 |
| PASSPORTS | 5 |
| VISAS | 5 |
| TRAVEL INSURANCE | 5 |
| HEALTH REQUIREMENTS | 5 |
| BAGGAGE INFORMATION | 6 |
| WHAT TO PACK | 7 |
| WEATHER AND SEASONS | 8 |
| GRATUITY GUIDELINES | 9 |
| WILDLIFE | 9 |
| ELECTRICITY | 10 |
| COMMUNICATION & TECHNOLOGY | 10 |



Regions & reserves



Singita Sabi Sand (A)

Singita Sabi Sand is a privately owned reserve within the Sabi Sand Game Reserve, adjacent to the Kruger National Park in South Africa. Spanning more than 45,000 acres, Singita Sabi Sand is renowned for high concentrations of big game and frequent leopard sightings. This is where you will find Singita Ebony and Boulders Lodges and Singita Castleton, our private villa on this property.

Singita Kruger National Park (B)

Singita Lebombo and Sweni Lodges lie in the south-eastern reaches of the Kruger National Park, on South Africa's border with Mozambique. Situated on 33,000 acres, Singita's concession in this reserve is an isolated piece of pristine wilderness where a unique wildlife population thrives across four distinct ecological zones. This area is especially well-known for its remarkable concentration of the 'Big 5' and in particular, four formidable prides of lions.

Passports

All visitors to South Africa require a passport valid for six months from the date of departure. For each entry into South Africa, your passport must have at least two consecutive pages that are completely blank (not including the final page or endorsement pages).

You may be refused entry if these conditions are not met.

Visas

Visitors from the USA, most Commonwealth countries, most Western European countries, and Japan don't require visas, and will be issued a free entry permit on arrival, valid for up to 90 days. Visitors of other nationalities will need to obtain a visa from a South African embassy or consulate prior to travel.

Please ensure that you check the entry requirements for the passport you will be travelling on in advance of your departure.

Travel Insurance

In order to protect your investment, we strongly encourage our guests to take out sufficient travel insurance as Singita does not take on the liabilities and risks associated with travel and cannot be held liable for delays, cancellations, or trip interruptions. We recommend the services of Global Rescue. Please note that Global Rescue is an independent third-party service provider and Singita accepts no liability in terms of the services rendered.

Health requirements

Covid-19

All restrictions to enter South Africa have been removed. We would encourage guests to still travel with their vaccination certificates where possible.

Malaria

Singita's lodges in South Africa are situated in a malaria-risk area. It is therefore essential that you consult your doctor or a travel clinic regarding antimalaria requirements prior to your visit.

Yellow Fever

South Africa requires all travellers journeying from yellow fever risk countries to show proof of a yellow fever vaccination in the form of a valid yellow fever certificate.

This also applies to those who have transited through a yellow fever risk country.

Travel vaccinations

Please consult your doctor or a travel clinic prior to your trip for advice on further vaccinations recommended for travel in South Africa.



Federal Airlines baggage information for internal (or domestic) flights

Due to the limited capacity of small aircraft, **all luggage must be in soft-sided duffel bags (one flat side will be allowed).**

MAXIMUM CHECKED LUGGAGE:

- Weight: 20kg/44lbs (in the hold);
- Measurements: 40cm (16 inches) wide x 30cm (12 inches) high x 60cm (24 inches) long

MAXIMUM HAND LUGGAGE:

- Weight: 5kg/11lbs
- (1 soft piece allowed with ONE flat side only)

PLEASE NOTE:

If your luggage exceeds the above limitations, we will not be able to load it. There is a complimentary luggage storage facility at the Federal Air Lounge at O.R. Tambo Airport, Johannesburg if you need to leave larger items here temporarily (provided you have booked flights on a return basis).

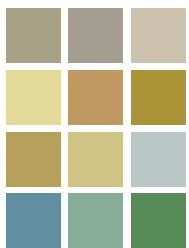
Please ask your Travel Advisor for additional options on excess luggage.



What to pack

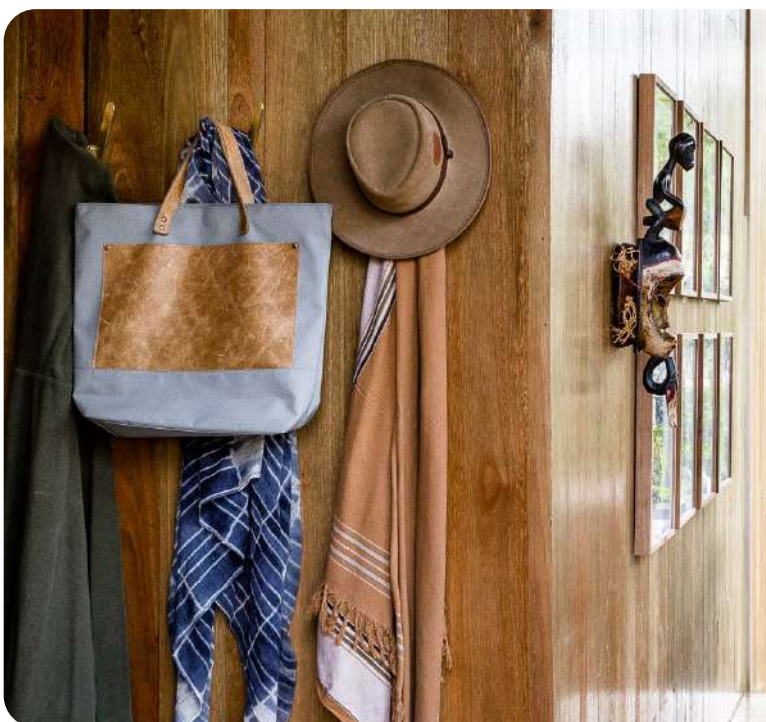
Neutral tones and light colours are best for game drives and bush walks (these allow you to blend in to the surroundings and ensure minimal disturbance to the wildlife, and thus more natural wildlife behaviour and an enhanced game-viewing experience). Game drives take place in the early morning and late afternoon – it can cool down significantly before the sun rises and after it sets, so we recommend layering clothing to account for varying temperatures over the course of the day. Formal wear is not required at any of our lodges – you are welcome to come straight from a game drive into drinks and dinner. Laundry, including ironing, is complimentary at Singita lodges to assist with packing lightly (please note luggage restrictions on **page 6** in this document).

SINGITA INSPIRED COLOUR PALETTE



Suggested packing guide

- Shorts, t-shirts, summer dresses for during the day (light, natural fabrics like cotton and linen are recommended)
- Long trousers, long-sleeved vests and a warm jacket for early mornings and evenings
- Woollen hat/beanie, gloves and scarf for winter months
- Comfortable walking shoes and socks
- Sandals or flip-flops for during the day at the lodge and closed shoes or sneakers for evenings
- Swimwear
- Sun hat
- Sunglasses
- Camera, video camera, binoculars, spare memory cards and charging equipment
- Spare contact lenses/glasses and contact lens solution
- Medication (the remote nature of the lodges means that anything beyond First Aid supplies won't be available on site)



Amenities provided in all Singita suites

- Shampoo and conditioner
- Body wash
- Body lotion
- Hairdryer
- Sunscreen
- Insect repellent
- Sun hat
- Rain poncho
- One set of binoculars per room

Weather and seasons

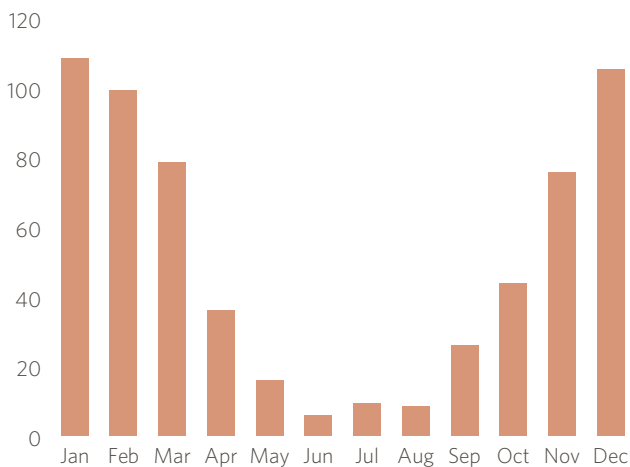
October – April:

Casual summer clothing (shorts and lightweight shirts) with a warm jersey or sweater for the cooler mornings and evenings.

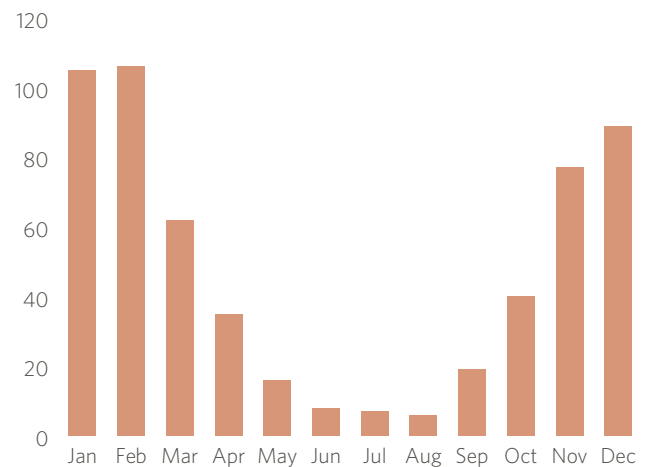
May – September:

Casual lightweight clothing with a warm parka or windbreaker jacket for the very cold mornings and nights.

SINGITA SABI SAND
AVERAGE MONTHLY RAINFALL (MM)



SINGITA KRUGER NATIONAL PARK
AVERAGE MONTHLY RAINFALL (MM)



SINGITA SABI SAND AVERAGE SEASONAL TEMPERATURE RANGES

| SEASON | MONTHS | Low | High |
|--------|---------------|---------------|----------------|
| SPRING | (Sept - Nov) | 20 °C / 68 °F | 30 °C / 86 °F |
| SUMMER | (Dec - Feb) | 23 °C / 73 °F | 38 °C / 100 °F |
| AUTUMN | (March - May) | 22 °C / 72 °F | 31 °C / 88 °F |
| WINTER | (June - Aug) | 18 °C / 64 °F | 29 °C / 84 °F |

SINGITA KRUGER NATIONAL PARK AVERAGE SEASONAL TEMPERATURE RANGES

| SEASON | MONTHS | Low | High |
|--------|---------------|---------------|---------------|
| SPRING | (Sept - Nov) | 15 °C / 59 °F | 31 °C / 89 °F |
| SUMMER | (Dec - Feb) | 22 °C / 72 °F | 35 °C / 95 °F |
| AUTUMN | (March - May) | 19 °C / 66 °F | 32 °C / 90 °F |
| WINTER | (June - Aug) | 8 °C / 46 °F | 28 °C / 82 °F |

The above temperatures are monthly averages. The actual daily temperatures and rainfall may differ from these.



Wildlife

You will be briefed upon arrival at each lodge on the specific safety precautions pertinent to that particular property, but as a general rule, please be mindful that you are in a wilderness environment in which animals roam freely, so you may encounter potentially dangerous animals on foot or around the lodge. In this case, please remain calm and follow instructions from the staff - our teams are highly trained and experienced in handling such situations.

Gratuity guidelines

Tipping cultures differ from country to country. While staff at Singita do not expect or rely on gratuities from guests, you may wish to leave a discretionary token of appreciation in the form of cash or a nominated amount added to your bill. Tips from the general staff gratuity pool are divided equally among chefs, housekeepers, porters, front of house and back of house staff. Should you wish to allocate a gratuity to a particular staff member, we ask that you specify this.

All Singita properties accept Visa, MasterCard and American Express.



| POSITION | AMOUNT |
|-----------------------------|--------------------------------|
| Field Guide | From USD 45 per couple per day |
| Tracker | From USD 45 per couple per day |
| Banakeli/Waiter | From USD 35 per couple per day |
| Wellness Therapist | 10% of treatment cost |
| General staff gratuity pool | From USD 45 per couple per day |

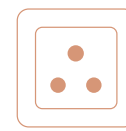
Electricity

All of the suites at Singita have multiple plug points and include types appropriate for EU, UK, North America and USB devices. South Africa uses power outlets and plug types C, M and N.

Most universal power plug adapters are not capable of connecting to M sockets, however adaptors can be purchased in South Africa.



TYPE C



TYPE M



TYPE N



Communication & technology

Complimentary internet access is available at all Singita lodges in South Africa. However, due to the remote nature of our locations, please bear in mind that the connection can be slow and intermittent at times. Mobile phone coverage in the reserve is only available in certain areas.

If you do need to connect, please be mindful of other guests who choose to switch off. For this reason, we ask that you keep mobile phones on silent and refrain from using them around other guests in the communal lodge areas.

