



LUSH PRIVATE LODGE FACT SHEET 2022

THIS IS LIFE.
THIS IS.
LUSH.

Location.

Lush is set on Black Rhino Game Reserve – a private concession within the malaria-free Pilanesberg National Park. Exclusive traversing rights to 55 000ha (135 000ac), as well as access to the park's public section, assure guests an intimate – and unique – safari experience, with the chance to see all of the Big Five and the endangered African wild dog.

The Lodge.

Lush is a contemporary lodge, shaped around the environment. Minimalistic décor and natural finishes put the focus on the view, at once drawing guests to outdoor living spaces.

- **3 Bush-facing Suites and 2 Mountain-facing Suites**, designed with privacy and every comfort in mind, each include: an emperor-sized bed (convertible to a 3/4-bed set); pause area (incl. Smeg minibar and Nespresso coffee machine); in-room freestanding bath; en-suite shower room with spacious walk-in shower; private dressing and vanity area; separate toilet; open-air shower; range of deluxe body products; expansive outdoor furnished deck; private splash pool; air-conditioning, and personal safe
- **1 Deluxe Suite**, larger in size affording more privacy, and direct views into the wildlife area from the upstairs viewing deck. This suite offers the following: an emperor-sized bed (convertible to 3/4-bed set); pause area (incl. Smeg minibar and Nespresso coffee machine); private lounge; dedicated work/desk area; separate in-room freestanding bath; en-suite shower room with spacious walk-in shower; private dressing and vanity area; separate toilet; outside bath and double open-air shower; range of deluxe body products; large heated splash pool; large upstairs viewing deck; air-conditioning, and personal safe
- **Main guest area**, run on traditional Italian hospitality, with: a bar; open-plan dining/lounge area; outdoor lounge; and wrap-around viewing/dining deck
- **African boma**, for social outdoor dinners, with: a barbeque; central firepit; and dining tables
- **Lush Boutique**, with a range of select items – including the lodge's blend of fair-trade coffee – for guests to take home something of their time here
- **Lush Wellness Treatments**, destress and balance your body and mind, by experiencing deep relaxation with our organic Terres D'Afrique Products.

***Please note:** children 12 years and older are welcome; age restriction is revisable if the lodge is booked exclusively





GROUNDED IN NATURE

Arrival & Departure Times.

Check-in: 14h00 | Check-out: 11h00

**Deviation to these times by special arrangement only*

Rates.

All-inclusive: three meals per day, and afternoon tea; all teas/coffees and soft drinks; local beers, wines, and spirits; in-room minibar; Wi-Fi access (all areas); lodge activities; 15% VAT

Additional*: gratuities; imported beers, wines and spirits; Lush Boutique purchases; Black Rhino Game Reserve entrance fees; nearby activities; transfers

**Added to guests' bills and payable on check-out*

Activities.

Lodge activities: twice-daily game drives, with coffee/sundowner stops, guided morning bush walks bring you closer to nature – offered by the lodge, on request and subject to availability and attracts an additional cost

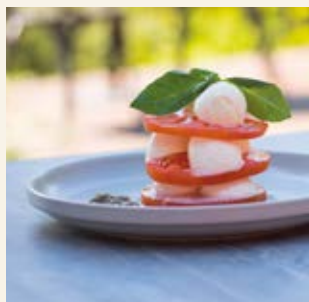
Nearby activities*: Pilanesberg hot-air balloon safaris; golf at Sun City's championship Gary Player and Lost City golf courses

**Arranged on request, and attract an additional cost*

Climate.

Average temperatures in mid summer (January) range from a low of 19°C/66°F to a high of 31°C/88°F, and in mid winter (July) from a low of 4°C/39°F to a high of 21°C/70°F.

Average annual rainfall is 622mm/24in, and mostly occurs in the form of afternoon thundershowers during the period December to March.

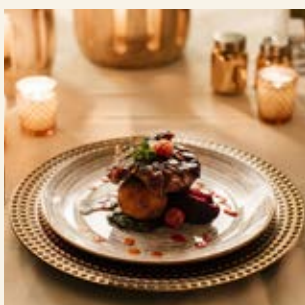




UNIQUE SAFARI EXPERIENCE

A Day at Lush.

...happens in your own time. But the outline below gives guests an idea of what to expect:



Spring & Summer	Autumn & Winter
05h00 – Wake-up call	05h45 – Wake-up call
05h30 – Tea/coffee	06h15 – Tea/coffee
05h45 – Morning game drive (±3 hours)	06h30 – Morning game drive (±3 hours)
09h00 – Continental buffet and cooked breakfast is served back at the lodge	09h30 – Continental buffet and cooked breakfast is served back at the lodge
At leisure	At leisure
13h00 – Light lunch is served	13h00 – Light lunch is served
16h00 – Afternoon tea is served	15h30 – Afternoon tea is served
16h30 – Afternoon game drive (±3 hours)	16h00 – Afternoon game drive (±3 hours)
20h00 – Dinner is served back at the lodge, in the dining room/on the deck/out in the boma	19h30 – Dinner is served back at the lodge, in the dining room/on the deck/out in the boma



WE HAVE
SURELY FOUND
PARADISE

Getting Here.

By Road

- From Johannesburg, take the R512 past Hartbeespoort Dam and exit onto the N4 towards Rustenburg
- Travel along the N4, then take the R556 (Sun City/Pilanesberg National Park) exit
- Turn right at the stop onto the R556, and continue on towards Sun City
- Pass the Sun City gate and then Sun Village Shopping Centre (both on the right)
- At the four-way stop, turn right onto the R565 Derdepoort road
- Continue on for approx. 27km – the entrance to Black Rhino Game Reserve is on the right
- Friendly gate staff will direct guests on to Lush

By Air

Pilanesberg International Airport is serviced locally by SA Express. The airline offers twice-weekly flights (Mondays and Fridays) connecting Johannesburg's O.R. Tambo International Airport and Cape Town International Airport with Pilanesberg. An airport car rental service is available, and lodge transfers can also be arranged.

