

THIS IS LIFE.
THIS. IS.
LUSH.



THIS IS LIFE.
THIS IS.
LUSH.

About Us.

The Lupini family, rooted in tradition and closeness, are living out their dreams by creating a nurturing place for all to enjoy in the African bush. After searching for the right place, the location for the lodge would reveal itself with the appearance of a rarely-seen herd of buffalo. This was the sign. The Lupini's had found where new foundations could be laid down.

Lush, tucked into a wooded hillside, holds you in the bush and in the moment. Five individual, suites afford the privacy of home, while the main lodge, run on Italian hospitality, ensures you are very well taken care of. Life in an unspoilt wilderness, free of everyday concerns, creates a sense of wholeness. All at once you are in tune with the beat of the wild, belonging back in nature.

Come and experience life at Lush...







WE HAVE
SURELY
FOUND
PARADISE

The Sanctuaries.

Lush is located on the **Black Rhino Game Reserve** – a private concession within the malaria-free greater **Pilanesberg National Park** (55 000ha/135 900ac). The park, encircled by the hills of a volcanic ring-dyke complex and containing both Kalahari and Lowveld biomes, is a wilderness Eden. Nearly all animal species endemic to Southern Africa – including the endangered African wild dog and all of the Big Five – are to be found here.

As a guest of Lush, you are assured a private – and unique – safari experience, with the rare opportunity to see the black rhino. The lodge has exclusive traversing rights over 25 000ha (62 000ac) including the Black Rhino Game Reserve and the park's Wilderness Area – established for the protection and breeding of this critically-endangered black rhino species.





GROUNDED IN NATURE

The Lodge.

Lush is a contemporary lodge, shaped around the environment. Its minimalistic décor and natural finishes put focus on the view, which at once draws you outside. With this in mind, multi-level interior-flowing-to-exterior spaces – made up of a bar, dining area, sunken lounges, and a wrap-around viewing deck – are designed for outdoor living.







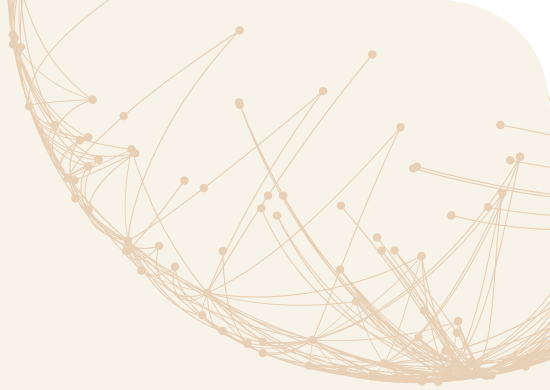
The lush experience is one of easy-going luxury, and the bar is a favourite spot to rendezvous. Aromas from the lodge's own blend of fair-trade Arabica coffee tempt you over at any time of day, while a premium selection of local and international wines and whiskies encourage evening socialising. A sure conversation starter is the Golden Cascade skin – a slice of ancient riverbed – that forms the bar's focal point.











LUSH (L)UXURY IN THE B(USH)

The Suites.

Choose from three Bush-facing or two Mountain-facing Suites – distinguished only by their views – interspersed between the trees. Each is not simply a base from which to explore your surrounds, but a living space designed with every comfort in mind.

Your emperor bed, topped by a down duvet and pillows, is a roll away from a pause area, with a well-stocked Smeg minibar and range of Nespresso coffees. A few steps to the other side is a free-standing bath with a view – lie back and soak up the scenery. Around the corner, a walk-in rain shower opens out to an open-air shower. Body products, with botanical extracts, heighten the sensory experience.

LUSH LUXURY IN THE BUSH



The Suites.

Innovative use of space, wilderness-inspired interiors, and extended fold-back glass doors mean you feel immersed in nature even when in your suite. While their décor gives a nod to the Lupini's Italian heritage, much of the furniture and other decorative items are local, supporting South African artisans.

Your suite is somewhere you will want to spend sufficient downtime. Both its interior and exterior spaces invite relaxation – from your own splash pool, providing respite in the heat of the day, to loungers, where you will be lulled by the sounds of the bush. The chirring of a nightjar bird, calls of the jackal, lions roaring in the distance...













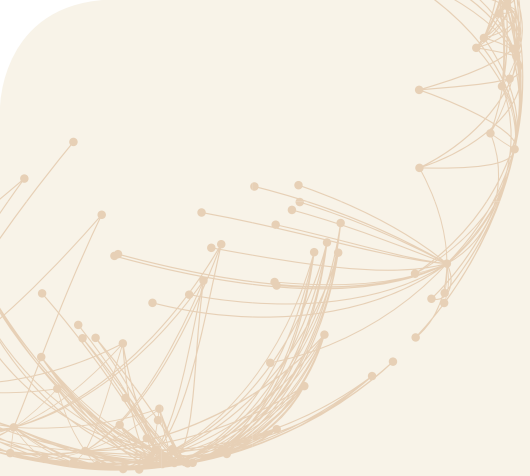


...WITH A SPRINKLE OF ITALIAN FLAIR

Dining.

Dining is an essential part of the Lush experience. Days here are punctuated by culinary delights – as anticipated as the activities. Look forward to wholesome breakfasts on the viewing deck, game-drive treats, light lunches, afternoon teas, and fireside barbecue-style dinners in the boma. Private dining can also be arranged.

All menus celebrate fresh, seasonal ingredients in freshly prepared dishes. The Lupini family ethos of cooking now for now ensures consistent quality and satisfaction. Dining options range from light and healthy to downright indulgent, but special dietary requirements, including vegetarian and gluten-free, are catered for on request.



INTO THE WILD...

Activities.

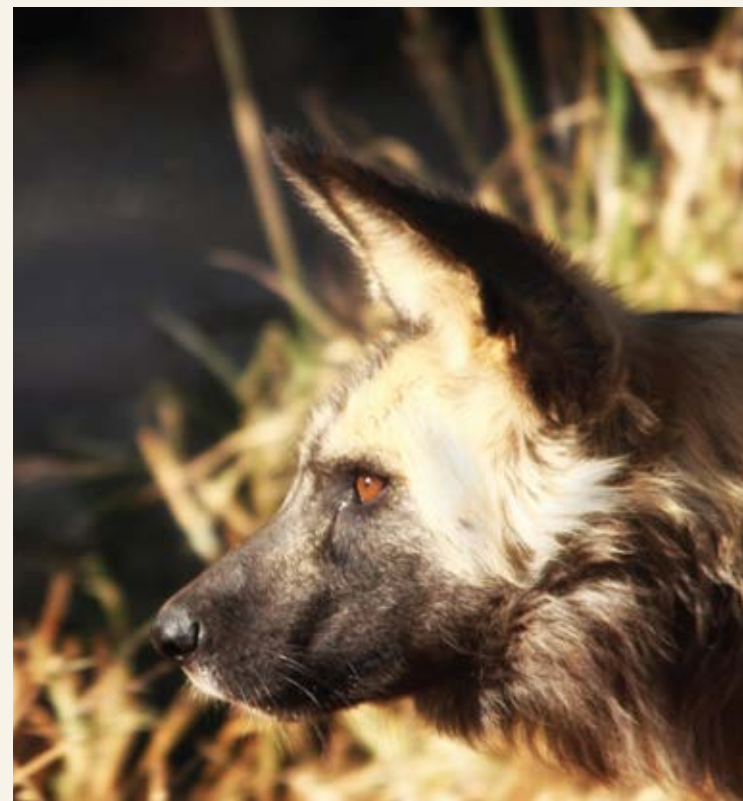
I never knew of a morning in Africa when I woke up and was not happy. – Ernest Hemingway

Lush guarantees you authentic safari adventures to write home about. Exclusive traversing in Black Rhino Reserve and the Pilanesberg's Wilderness Area offers the opportunity to explore an untouched environment. Access also to the public section of the park increases your chances of encountering a large variety of wildlife.

Game drives are offered on the traditional twice-daily basis, with your ranger finding scenic stops for morning coffee and afternoon sundowners.

Guided morning bush walks (on request and subject to availability and attracts an additional cost), bringing you closer to nature, and **hot-air balloon flights**, giving you a different perspective on the herds, can be arranged on request. Please enquire upon making your Lush reservation.

For golf enthusiasts, the nearby championship **Gary Player Golf Course** and **Lost City Golf Course** offer 18-hole (par 72) meanders in parkland and bushveld settings, respectively. Transfers by arrangement.





OUR PLACE IN PARADISE

Lush Private Lodge.

Distances from the lodge:

Pilanesberg International Airport
40km/25mi.

Lanseria International Airport
165km/103mi.

O.R. Tambo International Airport
230km/143mi.

+27 66 479 5639

reservations@lushprivatelodge.co.za

lushprivatelodge.co.za

Greater Pilanesberg National Park,
Black Rhino Game Reserve
South Africa



Built for your enjoyment. – Tito & Rowene Lupini