



SIMBAVATI TRAILS CAMP

TIMBAVATI PRIVATE NATURE RESERVE
KRUGER NATIONAL PARK
SOUTH AFRICA

Untamed African wildlife *wonderland*

Simbavati Trails Camp is a gem; a luxury-yet-back-to-basics walking trails camp located in a secluded area of the Timbavati Private Game Reserve. It's all about walking trails with expert guides, one of the most stimulating and enthralling forms of safari. Trails Camp borders, without fences, an unspoilt wilderness area of 11,000 hectares in the Greater Kruger National Park.

Contact

Reservations

+27 (0)87 151 4520 | res@simbavati.com

Simbavati Trails Camp

All messages for Simbavati Trails Camp can be relayed to River Lodge on +27 (0)15 793 9051

simbavati.com

Africalm
IS OUR PROMISE

At a Glance



Number of Rooms

- 4 Rooms



Room Types

- Meru-style Tents



Children Policy

- No children under 16 years are permitted, in line with reserve regulations



Ideal For...

- Couples
- Solo Travellers
- Explorers
- The Active & Adventurous

UNIQUE SELLING POINTS

Why We *love it*



Walking Safari:

Focusing exclusively on walking safaris with expert guides



Camp Fire:

Great traditional safari vibe around the camp fire



Bush Cuisine:

From fire to table – amazing bush cuisine including earth-buried pot bread



Intimate & Exclusive:

Only four en suite tents, this is intimate and exclusive – perfect for friends

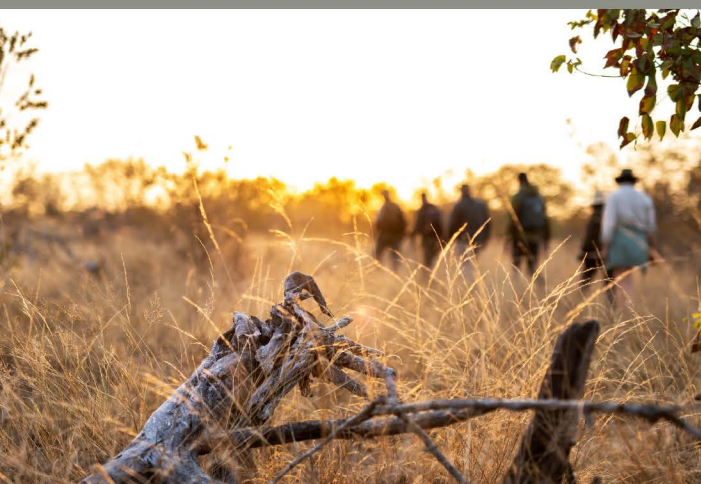
WHY VISIT?

Timbavati

The Timbavati Private Game Reserve borders the Kruger National Park to the north and east. The name Timbavati was derived from a Shangaan expression meaning 'the place where something sacred came down to earth from the heavens'.

The Timbavati has a vast array of wildlife, which includes the Big Five (lion, leopard, elephant, buffalo and rhino) thriving amongst giraffe, zebra, warthogs, hyena and many antelope species. This sums up the magical spirit of the Timbavati, which has a tangible sense of wilderness.

The reserve is also a protective habitat for sustainable populations of many endangered species such as black and white rhinoceros, pangolins, and many others.





Camp Facilities

- Communal tent with dining and sitting area
- Campfire with casual seating
- Small plunge pool and pool deck

Room *Types*

4 X MERU-STYLE
TENTS

- Twin beds • En suite bathroom • Ample storage space • Compostable toilet (eco-friendly) • Basin with water • Bucket shower (hot water on demand) • Views over the bushveld



Africalm
IS OUR PROMISE



LUXURY SUITE

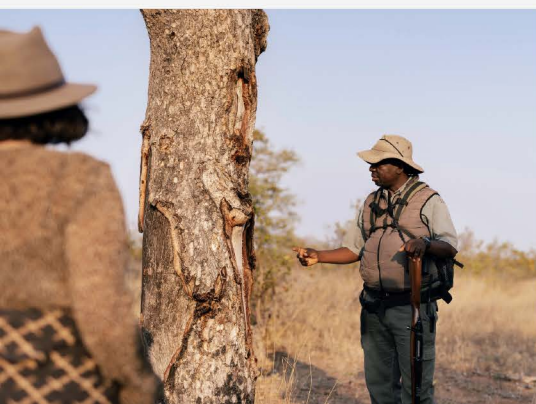
In-Tent Facilities & Amenities

- Bathroom with double vanity, two with bath and shower, two with shower only
- Bush facing shaded patio
- Bathroom comprising vanity with basin and jug of water, al fresco bucket shower (hot water on demand) and eco-friendly toilet
- Complimentary eco-friendly amenities
- Solar powered lights
- Cooler box with milk
- Tea and coffee making facilities in room (using water in a hot flask)
- Hot water bottles (winter)
- Mosquito nets



Daily Programme

- Early morning tea/coffee
- Morning walking safari
- Mid-morning breakfast
- Time to relax, enjoy the pool area and surrounds of the camp
- Lunch
- Afternoon tea
- Afternoon walking trails safari
- Dinner in the lounge, or around the fire in the open air boma (weather permitting)

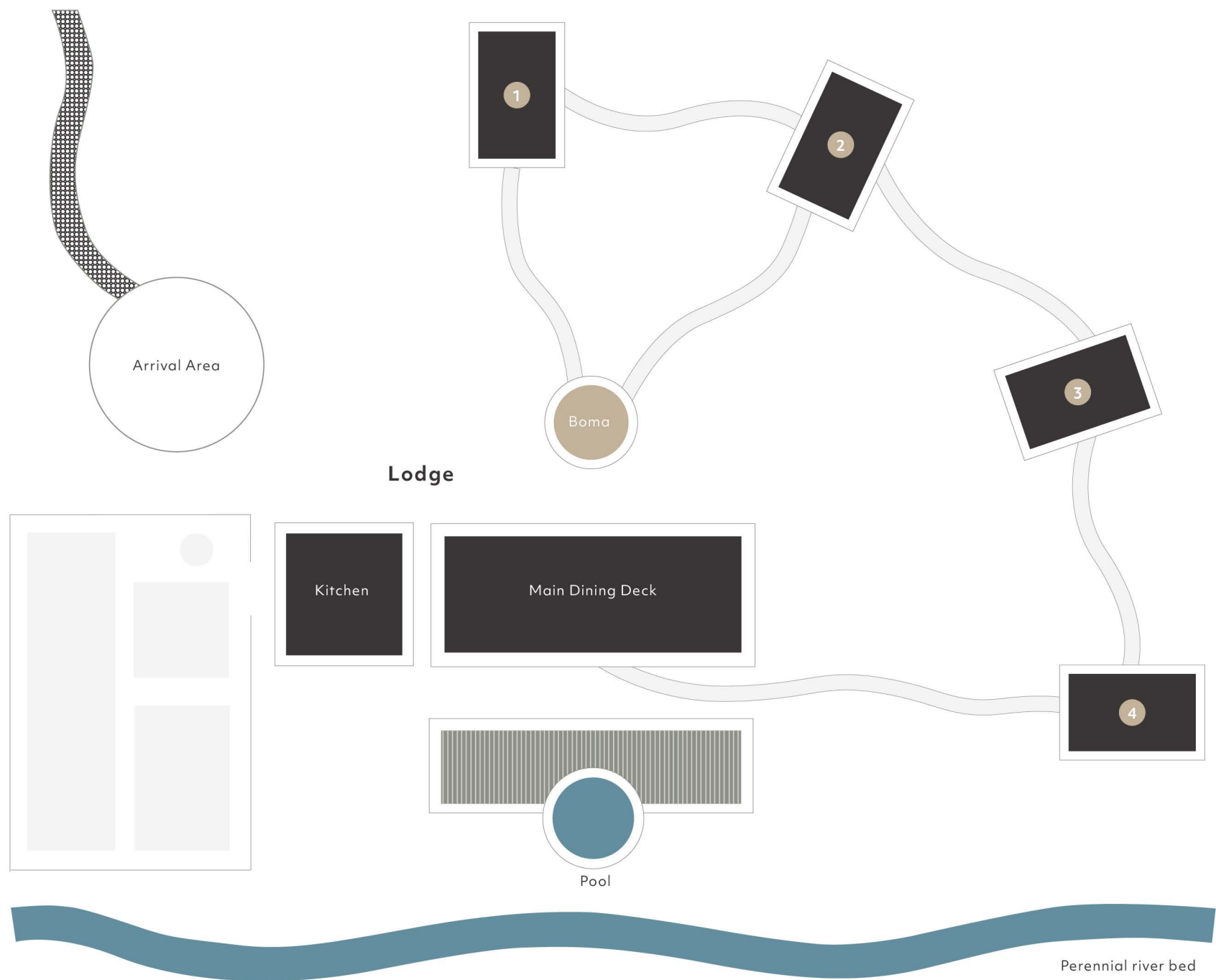


Africalm
IS OUR PROMISE

Lodge Layout

KEY

1-4: Luxury Tents



Activities

- Fire to table meals
- Star-gazing
- Walking safari
- Swimming pool

GETTING THERE

Travel Options

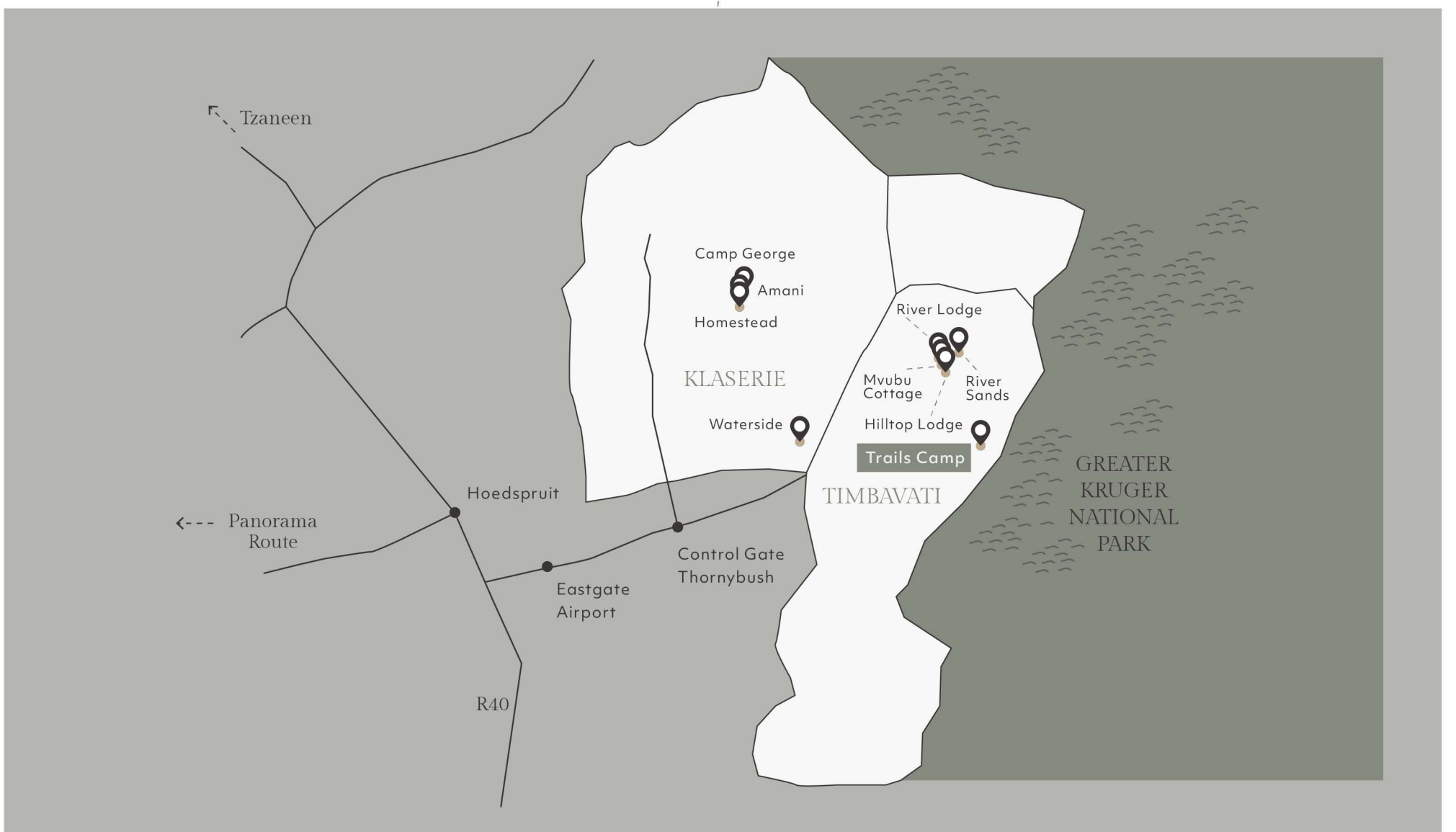
Simbavati Trails Camp is not accessible via private self-drive. Complimentary scheduled transfers in and out of Trails Camp are arranged from Simbavati Hilltop Lodge, transfer time of 1.5 hours. The drive from Johannesburg Airport is ± 6.5 to 7 hours (505km), ± 3.5 hours (210km) from Kruger Airport, and 3 hours (160km via the R40) from Hazyview.

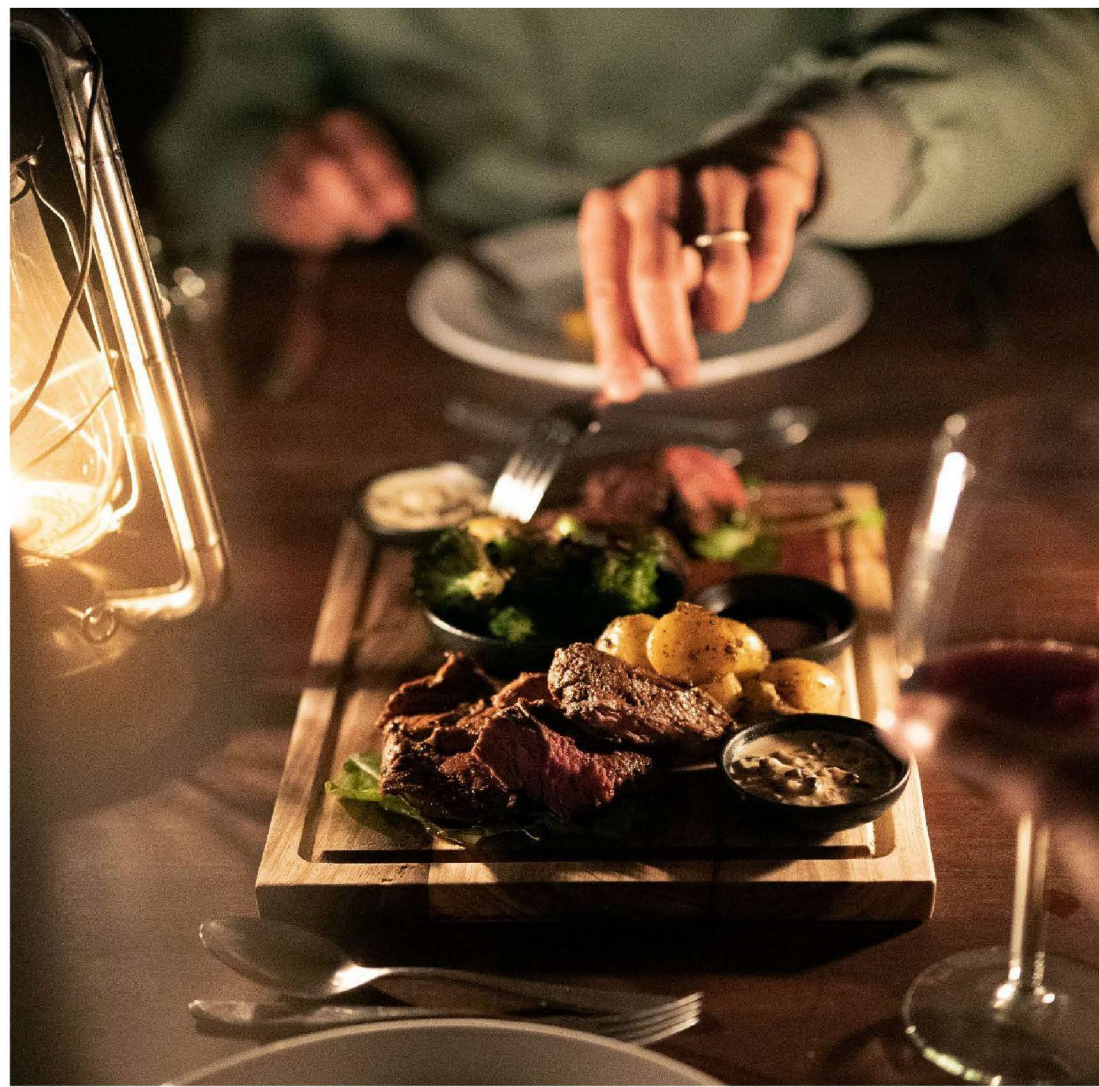


Africalm
IS A STATE OF BE-ING

TIMBAVATI

Location







Africalm
IS OUR PROMISE



Africalm
IS OUR PROMISE