



SARUNI BASECAMP

PEOPLE  NATURE



THE BEST OF THE MARA SAFARI

ICONIC MASAI MARA

Experience the energizing vastness of the Mara grasslands.

8 nights / 9 days

CLASSIC SAFARIS - Masai Mara





SUGGESTED SAFARI OVERVIEW
THE BEST OF THE MARA 2024

OFFER VALIDITY
 03 January 2024 to 02 January 2025

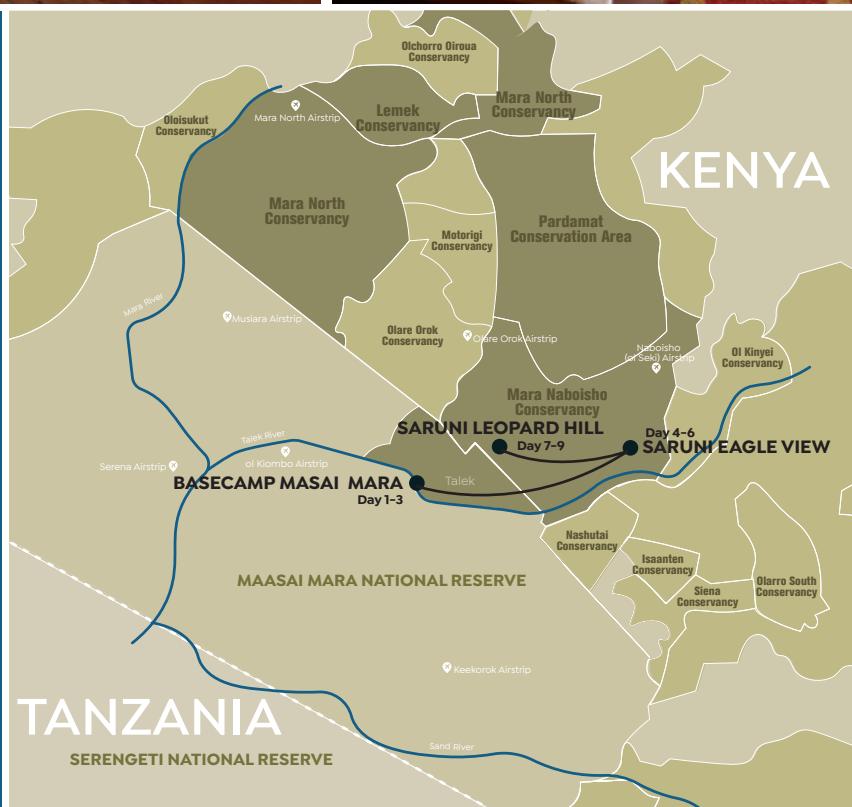
DESTINATION
 Masai Mara

LODGES & CAMPS
 Basecamp Masai Mara, Saruni Eagle View & Saruni Leopard Hill

DURATION
 8 nights / 9 days

MINIMUM GUESTS
 2

ALL-INCLUSIVE COST
 FROM **US\$5,465** per adult sharing



Few wildlife destinations can match the allure and mystique of the fabled Masai Mara. This is where the modern concept of safari took root; it's also among the earliest places explored by our distant African ancestors.

The endless grasslands of the Mara are a truly iconic landscape – studded with lone acacia trees and rocky kopjes, they offer endless vistas – and are home to a vast array of wildlife, in numbers that simply can't be found elsewhere.

Even outside of the Great Wildebeest Migration – which passes through this area as part of its constant cycle – there is a great deal of resident wildlife to look out for, and game drives in the Mara ecosystem are always rewarding. The Mara is also home to the Maasai, one of Africa's most recognisable tribal groups, and the visionary custodians of this special place.

Our 'The Best of the Mara' safari gives you the opportunity to stay at three different camps, and see the Mara ecosystem from multiple perspectives. Like all our suggested safaris, The Best of the Mara can be customised to meet your specific requirements, and tailored to focus on your interests. Talk to our journey specialists about adapting or extending this itinerary to create a Kenyan safari that's as unique as you are.



HIGHLIGHTS

- Exclusive access to the private Mara Naboisho Conservancy
- Unique opportunity to experience the Mara on foot
- Authentic under-canvas accommodation
- Incredible wildlife sightings
- Knowledgeable local guides
- Authentic encounters with neighbouring communities
- Access to locations that are normally off-limits

THE SARUNI BASECAMP DIFFERENCE

- The very best of Kenya
- Safaris designed around your specific requirements
- Streamlined transfers to maximise your time in the wilderness
- The flexibility to extend or customise your safari holiday
- Unique, unforgettable experiences that are not available anywhere else
- Remote, secluded and intimate lodges & camps in remarkable locations
- Warm, welcoming Kenyan staff
- Expert local guides, skilled at interpreting the wilderness and their cultural traditions
- Deep insights into conservation challenges and solutions
- Chances to give back through community initiatives

Lodges & Camps

Basecamp Masai Mara x 3 nights

- Prime Mara game-viewing
- Classic Masai Mara setting
- Iconic savannah landscapes
- The opportunity to visit sustainability projects
- Local Maasai guides on all activities
- Meaningful cultural experiences

Saruni Eagle View x 2 nights

- Exclusive access to 50,000 acres of pristine savannah wilderness
- Waterhole wildlife viewing from the camp itself
- Incredible views of the Koiyaki plains
- Day and night game drives
- Walking safaris with Maasai guides

Saruni Leopard Hill x 3 nights

- Access to the private Mara Naboisho Conservancy
- Contemporary lodge architecture
- Outstanding stargazing opportunities
- Secluded valley setting
- Iconic views
- Guided walking safaris

PRICING

PUBLISHED RATE | Per adult sharing

Low Season	01 Mar-31 May 2024	US\$5,465
	01-30 Nov 2024	US\$5,665
Mid-Season	03 Jan-29 Feb 2024 01-30 Jun 2024	US\$6,165
	01-31 Oct 2024 01-19 Dec 2024	US\$6,365
High Season	01 Jul-30 Sept 2024 20 Dec 2024-02 Jan 2025	US\$7,165

SUGGESTED SAFARI

(MAY VARY DEPENDING ON LOCAL CIRCUMSTANCES, WEATHER, AND THE RECOMMENDATIONS OF YOUR GUIDES)

Day 1 | Basecamp Masai Mara

- Arrive at Jomo Kenyatta International Airport, where a Saruni Basecamp vehicle will transfer you to Wilson Airport for your charter flight to the Masai Mara.
- Depart Nairobi in the morning*, arriving in the Mara around an hour later, where your Saruni Basecamp guide will meet you and transfer you to the camp for lunch.
- Relax through the heat of the day as you gaze out over the Masai Mara National Reserve, before embarking on an afternoon game drive to take advantage of the cooler part of the day, when wildlife is generally more active, before returning to the camp for dinner in the restaurant or under the stars.



Day 2 | Basecamp Masai Mara

- Your morning game drives with your Maasai guide takes you in search of Africa's Big Five and other wildlife of the Masai Mara.
- Enjoy lunch as a picnic or back in camp, before an afternoon game drive to explore new areas – including the safari tradition of sundowner drinks at the end of the day.
- Enjoy dinner in camp as you listen to the sounds of the savannah night.



Day 3 | Basecamp Masai Mara

- Continue to experience the vastness of the plains, and go where the game is with close (but safe and respectful) encounters with wildlife.
- Learn more about our unique approach to responsible tourism on a behind-the-scenes tour of the camp.
- Visit one of our local capacity-building projects – Basecamp Masai Brand women's initiative – and see how we are helping local women to achieve financial independence.
- You can also discover our reforestation project, and (for a small fee) plant a tree of your own to help offset the carbon emissions of your journey to the Mara.



Day 4 | Basecamp Masai Mara to Saruni Eagle View

- Heading out as part of a morning game drive, your guide will transfer you to your second camp – Saruni Eagle View.
- The Mara Naboisho Conservancy is especially renowned for its high numbers of lions, and game drives in this area give you a wonderful opportunity to watch these majestic predators in their natural habitat.
- Your day will end with sundowners at a scenic spot, before a night game drive back to the camp for dinner.



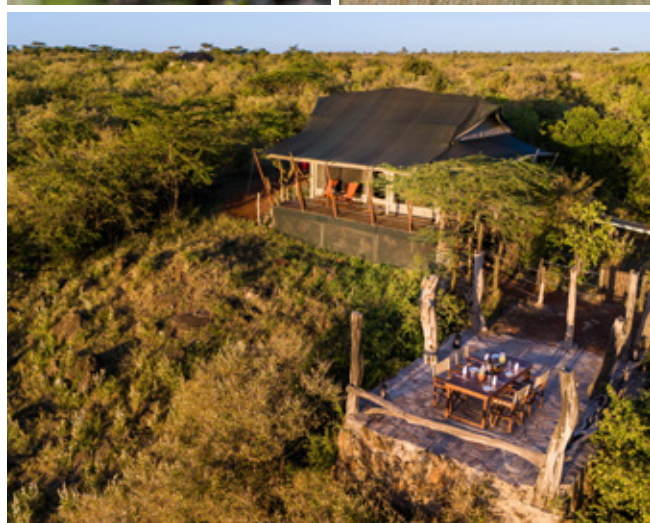
Day 5 | Saruni Eagle View

- A guided walking safari can reveal the tiny details of the Mara ecosystem that might be overlooked on a game drive. Engage all your senses as you enhance your bush craft and learn basic tracking skills from your Maasai guide.
- Enjoy a leisurely morning followed by lunch and an afternoon game drive to areas you've not yet visited.



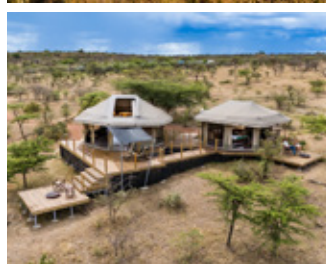
Day 6 | Saruni Eagle View to Saruni Leopard Hill

- Relax and spend your morning watching the animals come and go at the waterhole by Saruni Eagle View. Without leaving your tent, you'll get to witness a remarkable parade of thirsty creatures and birds.
- Later in the day, your guide will transfer you to the third camp on your Mara savannah safari – Saruni Leopard Hill.
- This camp also offers excellent waterhole views, making this day perhaps one of the most relaxing of your entire stay in Kenya.



Day 7 | Saruni Leopard Hill

- Today is all about how you want to spend your time, with your choices including an early morning massage and morning/afternoon game drives in a part of the Mara where very few vehicles are permitted.
- It all adds up to a very exclusive safari experience – which naturally includes sundowners – before returning to the camp for dinner.



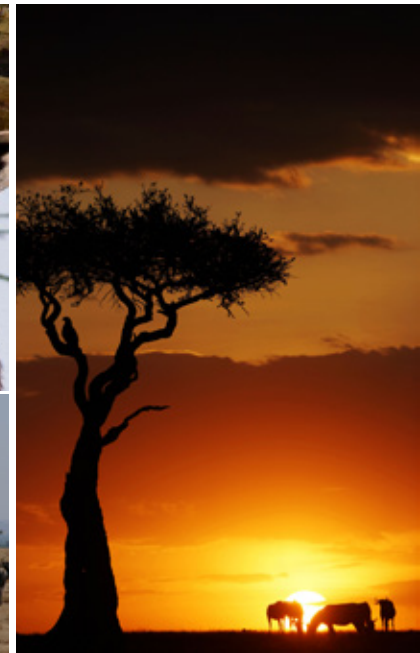
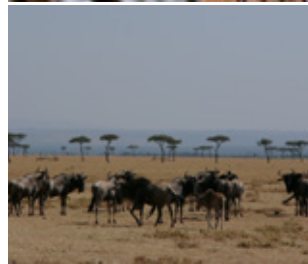
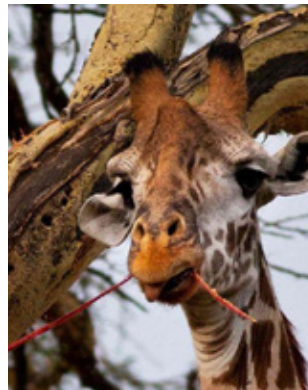
Day 8 | Saruni Leopard Hill

- Make the most of your final full day on safari with guided bush walks and game drives, all in the company of your Maasai guide.
- The area around Saruni Leopard Hill is especially good for walking, as no vehicles are permitted here.
- In your room make sure to press the button that causes the roof of your tent to retract so that you can gaze in wonder at the most incredible display of stars and constellations.



Day 9 | Departure

- A final morning game drive that culminates in breakfast back at the camp, before an opportunity to pack and prepare for your onward journey before lunch and the ground transfer to Ol Seki airstrip for your flight back to Nairobi.
- Saruni Basecamp transfer* to Jomo Kenyatta International Airport, with the option of dinner at either Talisman or Carnivore. Bookings will be dependent on your flight times, with dinner on your own account.





THE SMALL PRINT

Included

- Return flights from Nairobi Wilson Airport to the Mara and all ground transfers
- Eight nights' full-board accommodation and meals at Basecamp Masai Mara, Saruni Eagle View and Saruni Leopard Hill
- Unlimited shared game drives in open-sided 4x4 safari vehicles
- Guided walking safari with Maasai guides
- Sundowners at a scenic point
- Tea and coffee served in your own tent when desired
- Night game drives in Mara Naboisho Conservancy
- Mara Naboisho Conservancy fees
- Visits to community and sustainability projects
- Unlimited complimentary Wi-Fi
- Young Explorers Children's Club activities

Excluded

- International tickets
- Visa fees
- Drinks
- Telephone calls
- Any other incidental charges

Please note

Rates

- Rates with children or for single occupancy are available upon request.

Internal flights

- *Flight times and durations may vary depending on airline, weather and routing, and are subject to change. Road transfer times and durations also subject to change, and will be coordinated with your flights.
- Seats on scheduled flights are subject to availability at confirmation.
- Baggage allowance on internal flights is 15kg per person, preferably in small, soft-sided bags without wheels.