




SEOLO AFRICA
Rhino Post
KRUGER NATIONAL PARK



Rhino Post Safari Lodge

A wooden boardwalk with a railing leads through a lush, green forest. The boardwalk is made of reddish-brown wood and has a simple wooden railing on the left side. The forest is dense with various types of trees, some with large, dark green leaves and others with lighter green foliage. The ground is covered in dry leaves and twigs. The overall atmosphere is peaceful and natural.

JOURNEY WITH US TO THE KRUGER NATIONAL PARK

Welcome To Rhino Post Safari Lodge

Experience an authentic, unfenced safari lodge in South Africa's iconic Kruger National Park. At Rhino Post Safari Lodge you have an exclusive opportunity to get close to nature on nature's terms. Rhino Post offers you the best of both worlds, with the enormity and diversity of the Kruger and the exclusivity of an eight suite lodge on a private concession in a game-rich area.



Experience Africa



Experience Life

Journey with us







Immerse yourself



Taste the flavour of Africa



Ignite your tastebuds



MAKE THE KRUGER AN EXPERIENCE

Safari game drives are the order of the day and night

Traverse the vast network of roads in the park as with a knowledgeable guide as you explore the incredible biodiversity that makes Kruger a world icon. Enjoy the privilege of continuing your drive after dark when the self-drive tourists are required to return to their camps, allowing you the opportunity to experience the magic of Kruger at night. Feel secure in the knowledge that at Rhino Post you are supporting sustainable and ethical tourism. We are proud of the fact that we do not drive off-road – both out of respect for nature, and because in the Kruger Park, it's just not necessary. Animals often take advantage of the smooth tarred roads along the most popular routes, allowing you to see more game, particularly in the winter months when the roads are not only warm but close to rivers and water sources.



Witness the journey









Let us show you Africa's heartbeat

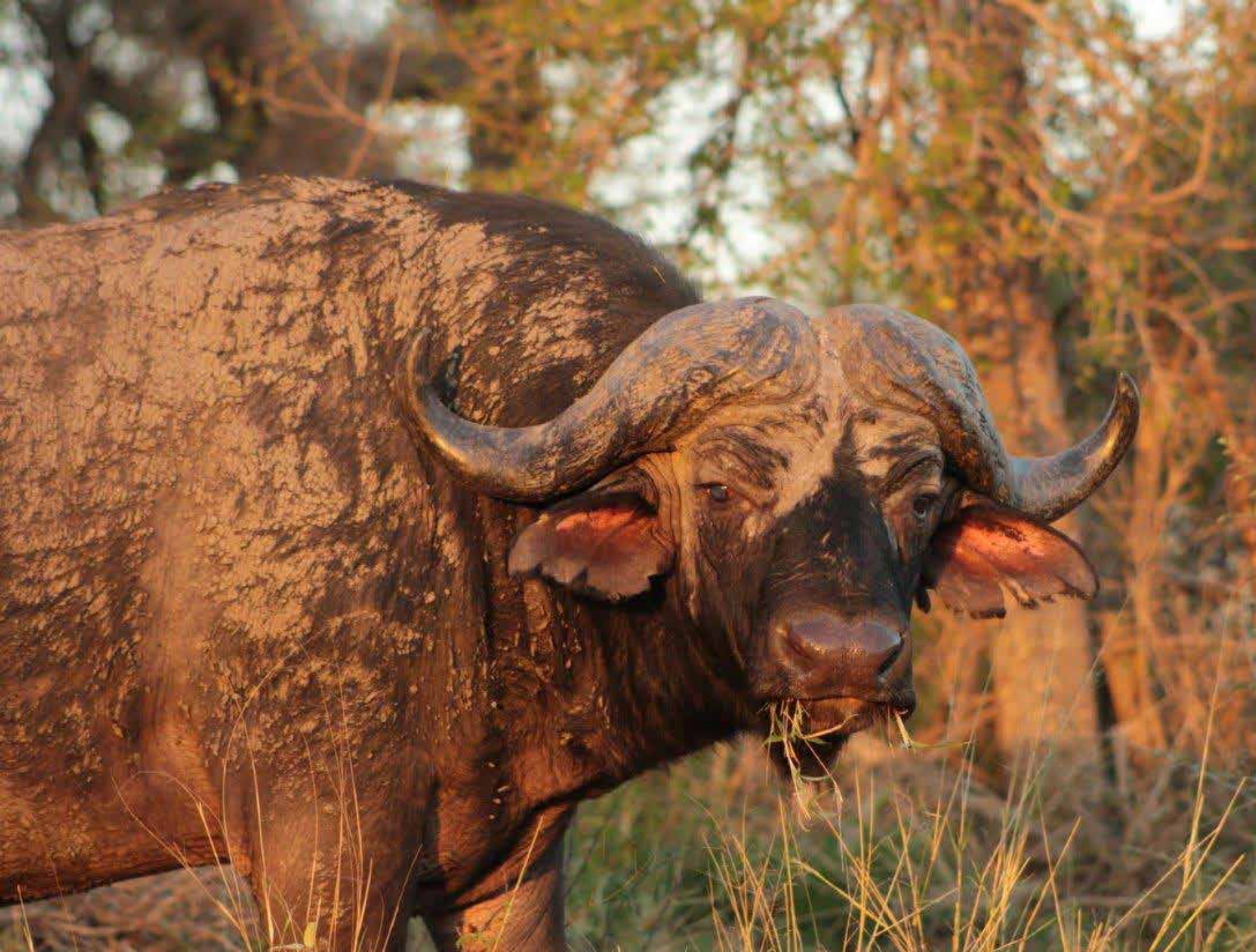




BECOME ONE WITH NATURE

There's a place for everyone

Rhino Post Safari Lodge is not just a beautiful and contemporary lodge built from canvas, wood and glass – it blends into the natural surrounds of the Kruger Park giving you an authentic bush experience without the discord of sculpted gardens and fences. Indulge and experience a relaxed and friendly ambience, amazing wildlife encounters, people, the Big Five and the wide-open skies of Kruger that will create cherished memories and a yearning to return.





Put your feet up



Become a part of our family





Dive in

Relax, unwind and indulge in the heart of the Kruger National Park with magnificent views of the waterhole and dry riverbed, el-fresco dining. Take in the beauty of the roaming wildlife and surrounding forest from the poolside.





EXCLUSIVELY AUTHENTIC. EXCLUSIVELY AFRICAN

An adventure that is yours to remember

Revel in the exclusivity of a sixteen-bed lodge and outstanding personal service that compliments your unforgettable Kruger Park safari experience. The comfort of your room and the lodge is matched only by the chef-prepared brunches, high teas and dinners served to you daily. Enjoy a full-service bar and swimming pool overlooking a busy waterhole frequented by Kruger's many animals, and each suite offers you a private viewing deck, outdoor shower and top quality linen. We want you to fall in love with nature.







Take a moment to enjoy the serenity

A HOLIDAY FOR YOUR BUDGET

Spend your time counting spots, not pennies

You don't want to count pennies - you're on holiday, so our rates are structured to ensure the best quality without breaking the bank. Your specially discounted SANParks Conservation Fee rate is charged per stay instead of per day, you also have the choice of a drinks inclusive package at a very reasonable rate. We believe that in a competitive and exclusive market, this combines to make your safari experience more attainable.



The magic of the Mutlumuwi









MAKE IT MORE THAN JUST A SAFARI

Live life on the wild side

Looking for an experience not soon forgotten? You can book a private night sleeping under the stars at the Sleep-Out Decks on specially built platforms overlooking the Xiteveteve waterhole.

Each deck accommodates two people, and this activity must be pre-booked.



EXTEND YOUR STAY

Plains Camp

Looking for more diverse activities? Combine your stay at Rhino Post with our sister lodge, Plains Camp @ Rhino Walking Safaris, an activity-based destination specialising in wilderness walking safaris led by dedicated guides with years of experience and training. With a maximum of eight people – over the age of 12 – per walk, you will be accompanied by two armed guides as you explore all the wonder and intrigue the Kruger has to offer.

Plains Camp is not about a variety of activities; it is about the incredibly liberating experience of immersing yourself in nature and the astounding biodiversity of the Kruger National Park. If your interest is even mildly sparked by wildlife and nature, there is no chance of getting bored!



EXPAND YOUR HORIZON

Journey to Victoria Falls

Chundu Island, located 21km upstream from Victoria Falls is without a doubt one of the most picturesque river islands on the Zambezi River and sets the tone for a tranquil and relaxed island safari in the heart of the Zambezi National Park.



ADVENTURE IN VICTORIA FALLS, ZIMBABWE

Masuwe Lodge

Located just 7km from Victoria Falls, Masuwe Lodge is the perfect foil for a bush breakaway. Surrounded by natural bushland and wildlife, Masuwe offers safari accommodation and experiences just a few minutes' drive from all the adventures of Victoria Falls, Zimbabwe.



JOURNEY WITH US
*Seolo
Africa*

Information

www.seoloafrica.com | info@seoloafrica.com | +27 11 467 1886

PRIVATE CONCESSION

Kruger National Park

Rhino Walking Safaris Private Concession is a primitive wilderness area situated in the Kruger National Park. It allows for very well-managed and supervised recreational use as well as stringent conservation ethics. Wilderness concession areas are very few, and far between, the most crucial benefit is that they are not developed with road networks and do not allow off-road driving – making them wholly wild and unspoilt. *The added advantage to our guests is that we are permitted to drive on the Kruger roads after dark and enjoy night-time safari game drives.*

- 01. Hoyo Hoyo Safari Lodge
- 02. Imbali Safari Lodge
- 03. Hamilton's Tented Camp
- 04. Elephant Plains
- 05. Djuma Vuyatela Lodge
- 06. Simbambili Game Lodge
- 07. Arathusa Safari Lodge
- 08. Chitwa Chitwa Game Lodge
- 09. Nkorho Bush Lodge
- 10. Cheetah Plains Lodge
- 11. Ulusaba Rock Lodge
- 12. Ulusaba Safari Lodge
- 13. Leopard Hills Private Game Reserve
- 14. &Beyond Exeter Dulini Lodge
- 15. Inyati Private Game Reserve
- 16. &Beyond Exeter Leadwood Lodge
- 17. &Beyond Exeter River Lodge
- 18. Singita Boulders Lodge & Singita Ebony Lodge
- 19. Idube Private Game Reserve
- 20. Singita Castleton Camp
- 21. Londolozzi Pioneer Camp
- 22. Londolozzi Founder's Camp
- 23. Londolozzi Private Granite Suite Camp
- 24. Londolozzi Varty Camp
- 25. Londolozzi Tree Camp
- 26. MalaMala Main Camp
- 27. MalaMala Sable Camp
- 28. Rattray's on MalaMala
- 29. Savanna Private Game Reserve
- 30. Shishangeni Lodge
- 31. Umkumbe Safari Lodge
- 32. Notten's Bush Camp
- 33. Sabi Sabi Selati Camp
- 34. Sabi Sabi Bush Lodge
- 35. Sabi Sabi Little Bush Camp
- 36. Sabi Sabi Earth Lodge
- 37. Lion Sands Ivory Lodge
- 38. Lion Sands River Lodge
- 39. 1933 @ Lion Sands
- 40. &Beyond Exeter Kirkman's Kamp
- 41. Lion Sands Narina Lodge
- 42. Tinga Game Lodge
- 43. Jock Safari Lodge & Little Jock
- 44. Lukimbi Safari Lodge
- 45. Shishangeni by BON Hotels





LETABA

PHALBORWA GATE

OLIFANTS

SATARA

ORPEN GATE

Sleep Outs

TSHOKWANE PICNIC SITE

Pleuro Walking Safaris

Rings Post

SKUKUZA AIRPORT - SKZ

PAUL KRUGER GATE

SKUKUZA

HAZYVIEW

PHABENI GATE

LOWER SABIE

Kruger National Park

PRETORIUSKOP

NUMBI GATE

CROCODILE BRIDGE GATE

WHITE RIVER

PLASTON

KMI AIRPORT - MQP
Kruger Mpumalanga
International Airport

MALELANE GATE

TO MOZAMBIQUE

ROCKYDRIFT

MBOMBELA (NELSPRUIT)

R40

R538

R40

R538

R104

S1

S1

R536

RHINO POST SAFARI LODGE AT A GLANCE



Country: South Africa | **Location:** Kruger National Park | **Feature:** Safari game drives in a Big 5 area

Number of Rooms	8 canvas wall & thatch rooms	Wheelchair Access	No
Configuration	2 doubles & 6 twins (2 convertible to double)	Distance between rooms	10 meters
Maximum Guests	16	Check-in/Check-out Times	13h00 – 14h00 & 11h00
Children	Children welcome. Children under the age of 6 cannot participate in game drives unless a private vehicle is booked	Credit Card Facilities	All accepted. No debit cards
Child-minding	Available by pre-arrangement	Weather/Temperature Range (°C)	May – Sep Sunny days with very cold mornings & evenings. Temps: 1°C – 25°C. Oct – Apr Days are hot and humid with occasional afternoon and evening thunderstorms. Temps: 19°C – 38°C.
Triples	Up to 1 child under 16 years per room. Maximum 2 triples at any one time	Seasonal Highlights	Jun – Sep Excellent game viewing. Oct – Jan Many species give birth so best time to view baby animals. Flowering season for trees, shrubs and wildflowers. Feb – Apr Excellent birding with migrant birds in residence.
Internet Access	Limited WiFi near reception area	GPS Coordinates	S 24° 55' 241" E 31° 39' 347"
Cellphone Coverage	No	Getting to Rhino Post Safari Lodge	Four-wheel drive (4x4) vehicle access not required. Kruger National Park has 9 entrances on the South African border and 2 on the Mozambican border. Paul Kruger Gate is the nearest entrance to Rhino Post Safari Lodge
Air-conditioning/Overhead ceiling fans	No air-conditioning but each room has overhead ceiling fans	Access by Air	Daily flights ex Johannesburg and Cape Town with Airlink + 30 min road transfer to lodge
Swimming Pool	Yes	Nearest Airport	Skukuza Airport
Electricity	Full service electricity for 18 hours a day. Battery power for fans and lights from 23h00 to 05h00	Alternative Airport	Kruger Mpumalanga International Airport (KMIA) Mbombela (Nelspruit)
Power	220v AC	Approximate travelling times to Rhino Post Safari Lodge	From Johannesburg via road – 7 hours From Johannesburg via air & road – 1 hour 30 mins From Cape Town – 3 hours From Nelspruit – 2 hours 30 mins
Hair Appliances	Yes – Hair dryers	Allow sufficient time to travel through the park and arrive at the lodge as guests are not allowed to travel on Kruger Park roads after sunset. Always allow extra time for animals blocking the road. Please Note: If guests are not in time at the respective gates, the SANParks personnel will not allow them to enter the park and they will have to find alternative accommodation for that night.	
Bath	Yes		
Shower	Yes – Outdoor		
Spa	In-room spa treatments (requires 24 hours notice)		
Mosquito Nets	Yes		
In-room Combination Safe	Yes		
Telephones	Yes – At an additional charge		
Laundry Service	Yes – At an additional charge		
Malaria Area	Yes		
Best time to travel	All year round		
Smoking Policy	No smoking permitted indoors		
What to pack	Summer (Sep – Mar) Comfortable casual, cool clothing, lightweight waterproof jacket, swimwear, hats, sandals or slaps	Winter (Apr – Aug) Warm sleepwear, warm layers for game drives/safaris	Year round Hats, scarves, warm jacket/wind-breaker, comfortable and sturdy walking shoes, cotton socks, long trousers to limit the number of ticks that you might pick up and to protect your legs from grass scratches on walking safaris
		Other Sunscreen, binoculars, cameras (and chargers), spare batteries, lip balm, contact lens solution, spare glasses, sunglasses, reference books, hair ties	

INCLUDED IN OUR RATE

- Accommodation
- Meals (brunch, high tea & dinner)
- Tea & coffee
- 2 game drives per day (6 years and older)
- Each guest will receive a complimentary glass of wine, local beer, cider or soft drink on the late afternoon/evening game drive

EXCLUDED

- Transfers
- Park fees
- All drinks except on the evening game drive (as stipulated)
- Laundry
- Optional gratuities & items of a personal nature



Country: South Africa | **Location:** Kruger National Park | **Feature:** Sleeping under the stars in the Kruger Park

PRE-BOOK THE ULTIMATE BUSH ACTIVITY



FROM RHINO POST SAFARI LODGE

- 1 hour safari game drive to the Sleep-Out decks
- Minimum age is 8 years
- Pre-booking essential
- No surcharge for groups of 4 or more



FROM RHINO WALKING SAFARIS

- 1 hour 30 min guided safari walk with armed guides
- Minimum age is 12 years
- Pre-booking essential. If the first guest to make a reservation at RWS requests a Sleep-Out, all subsequent reservations will be required to participate. Likewise, if the first guest does not want to do a Sleep-Out, then all subsequent reservations for those dates will be unable to do the Sleep-Outs activity.



The Sleep-Out Decks overlook the Xitevetev waterhole, providing the ultimate in bush experience. Walk from Plains Camp or drive from Rhino Post to remote decks built high above the ground under tree canopies. Enjoy sundowners overlooking the Xitevetev waterhole and an evening spent around the fire on the main deck as you enjoy dinner cooked over an open fire. End the night by sleeping under the stars on individual sleep decks.

Number of Platforms	4	Getting to the Sleep-Out decks	Guests depart from either Plains Camp or Rhino Post at approximately 16h00. Game drive from Rhino Post Safari Lodge approx 30 mins. Walking safari from Plains Camp with armed guards approx 1 hour 30 mins.
Configuration	Each sleeping platform accommodates 2 pax in a mosquito net tent on a foam mattress with sleeping bags and duvets. Mattresses can be pushed together and sleeping bags zipped to form a double. Waterproof cover sheets can be dropped over the tents in the event of rain.		Weather/Temperature Range (°C)
Maximum Guests	8	Seasonal Highlights	Jun – Sep Excellent game viewing. Oct – Jan Many species give birth so best time to view baby animals. Flowering season for trees, shrubs and wildflowers. Feb – Apr Excellent birding with migrant birds in residence.
Child-minding	No		GPS Coordinates To Rhino Post collection point
Triples	No	Conditions	Access to the decks is dependent on weather conditions. After heavy rains it may be a few days before they can be reached by a vehicle for servicing. In the event of inclement weather the Sleep-Out activity may be cancelled.
Bathrooms	2 bathrooms on communal deck. Includes hot showers and flushing toilets		
Lighting	Paraffin lanterns & torches Battery operated spotlight for game spotting		
Mosquito Nets	No		
Malaria Area	Yes		

Sleep-Outs is an authentic wilderness experience, there is no WiFi, cellphone coverage, air conditioning, fans, swimming pool, electricity, safes, hair dryers, telephones or laundry service

What to pack	Summer (Sep – Mar) Comfortable casual, cool clothing, lightweight waterproof jacket, hats.	Winter (Apr – Aug) Warm sleepwear.	Year round Hats, scarves, warm jacket/wind-breaker, comfortable and sturdy walking shoes, cotton socks, long trousers to limit the number of ticks that you might pick up and to protect your legs from grass scratches on walking safaris.	Other Sunscreen, binoculars, cameras, spare batteries, lip balm, contact lens solution, spare glasses, sunglasses, reference books, hair ties.
---------------------	--	--	--	---