

A family consisting of a man, a woman, and a child are walking away from the camera on a wide, paved stone path. The path is flanked by lush greenery, including a large, well-manicured hedge on the left and various flowering bushes, including white and pink roses, on both sides. In the background, a tall palm tree stands prominently against a clear blue sky with a few wispy clouds. A white rectangular text box is centered over the middle of the image.

MOUNT NELSON

A BELMOND HOTEL
CAPE TOWN

FAMILY

MOUNT NELSON



WELCOME TO MOUNT NELSON, A BELMOND HOTEL, IN CAPE TOWN'S BUZZING HEART. WE INVITE YOU TO RELAX IN OUR ICONIC PINK BUILDINGS, AIRY ROOMS AND DREAMY GARDENS. ENJOY IMAGINATIVE LOCAL CUISINE, NOURISHING SPA TREATMENTS AND EYE-CATCHING ARTWORKS. GAZE UP TO ADMIRE THE FLAT-TOPPED WONDER THAT IS TABLE MOUNTAIN AND STEP OUT OF OUR GATES TO EXPLORE THE CITY'S HOTSPOTS.

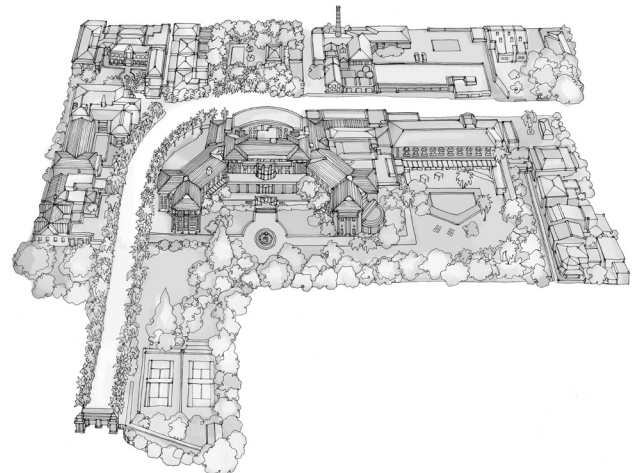
An array of activities keeps all ages entertained, from heated pools and a children's club to, tennis coaching and yoga. Just beyond our gates lie the wonders of the city, from stunning beaches and historic hotspots to vibrant wildlife and adventurous thrills.

FAMILY FOCUSED ACCOMMODATION

We have 198 fabulous, individually designed rooms and suites to choose from, all offering different moods and views. Families feel at home in our spacious, light-filled suites or interconnecting rooms.

Room amenities and facilities include:

- Additional cots for families with babies and young children
- Laundry service for children's clothing items
- Children's room service menu
- Milk and cookies at turndown
- Babysitting service on request
- Welcome amenity kit, including bubble bath, slippers, a gown, a stuffed toy and a backpack
- Extra beds in our family suites to accommodate families with small children



INSIDER TIPS

Take one step out of the Prince of Wales gates and you will discover the city's top cultural attractions within walking distance; step out from the Kloof Street gate and you will find the place where Capetonians live and play, a street lined with bars, restaurants, coffee shops, art galleries and so much more. A mere ten minutes drive takes you to Cape Town's famous white sandy beaches and just twenty minutes drive to the Cape's oldest award-winning wineland estates.

MOUNT NELSON



STAY IN STYLE - SIGNATURE SUITES

All rooms and suites are individually designed, choose from over seven different wings across the hotel, all offering different moods and views. Couples find secluded bliss in the garden cottage suites, decorated with oversized couches, fireplaces and Venetian mirrors. Families feel at home in our spacious, light-filled suites or interconnecting rooms.

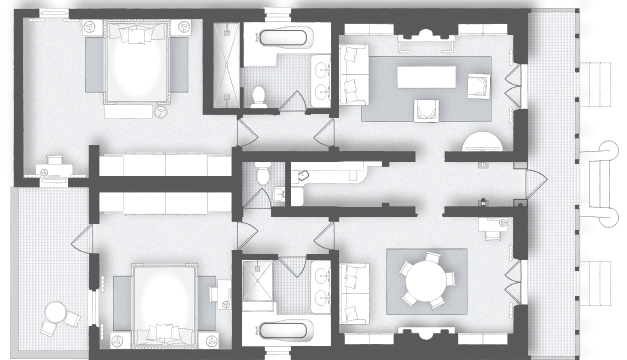
HONEYSUCKLE COTTAGE

The Honeysuckle Suite is one in a row of historic terraced houses built in the 1890s, featuring an original trellised verandah. Overlooking the pool and resplendent with beautiful private flowering gardens, admire the sense of calm, the collection of antiques, and the direct access to a heated swimming pool.

Our two-bedroom suite is a light and lavish residence, formed from two neighbouring cottages. Decorated by interior designer Graham Viney, Indian prints and marble bathrooms add a hint of 18th-century opulence to a modern luxe space. With a kitted-out kitchen, dining room and lounge, you and your gathering of loved ones will feel right at home. Maximum occupancy 2 persons per bedroom plus 1 rollaway bed in lounge.

SIGNATURE SUITE PROGRAMME

- Round-trip transfers
- Dedicated host service
- Complimentary curated in-suite bar and coffee machine
- Complimentary laundry service
- A fully bespoke VIP stay experience tailored to your preferences



LOCATION

Cottages

SUITE SIZE

104 sq m2 / 1119 sq ft2

VIEW

Beautiful views over the rose gardens and cottage pool

BEDS

2 bedrooms, one with king size bed and second with optional king or twin

LIVING ROOM

1 separate living area

MAX OCCUPANCY

5 people - 2 people per room and 1 on a rollaway in the lounge

FEATURES

- Fireplace
- Terrace
- Rose garden

MOUNT NELSON



STAY IN STYLE - SPECIALITY SUITES

DELUXE ONE BEDROOM SUITE - 6 Rooms 68-114 SQ M (731-1227 SQ FT)

Enjoy the luxury of space in these premium suites which have a separate living area and a large bathroom. The living room offers a sofa, a desk and a dining area. Maximum occupancy 4 persons using 2 rollaway beds or 1 rollaway and 1 cot.

GARDEN COTTAGE SUITE - 6 Rooms 46-51 SQ M (495-548 SQ FT)

A row of restored historic cottages adjacent to the secluded pool make up our sought after Garden Cottage Suites. Located behind a scented rose-garden, these suites are enclosed by a charming picket fence. Interiors boast toile wallpaper and elegant furnishings. They're tucked away in our gardens making them an idyllic romantic hideaway for honeymooners or couples. Maximum occupancy 2 persons.

DELUXE GARDEN COTTAGE SUITE - 2 Rooms 68-71 SQ M (731-764 SQ FT)

These even more spacious suites enjoy glamorous features like Venetian mirrors and a cozy fireplace. Each boasts its own rose garden and a terrace for breakfasts with a view. Maximum occupancy 2 persons and a cot.

PRESIDENTIAL SUITE - 1 Room 112 SQ M (1205 SQ FT)

Located on the top floor of the Green Park wing, the suite has exceptional views of Table Mountain, Lion's Head and Signal Hill to savour true Cape Town luxury and vistas. An entrance hall, plush bedroom, dining area, large lounge, wet bar and balcony with loungers make up this spacious haven. Leading interior designer Graham Viney has decorated the presidential suite in soft hues and luxurious silk fabrics. It features 1930s light fittings with baccarat crystal and an original desk from when the hotel opened in 1899. Maximum occupancy 4 persons using 2 rollaway beds or 1 rollaway and 1 cot.

SPECIALITY SUITE PROGRAMME

- Complimentary mini bar and coffee machine

MOUNT NELSON



STAY IN STYLE

ONE BEDROOM SUITE - 26 Rooms

42-81 SQ M (452-871 SQ FT)

These suites feature spacious bedrooms and a large separate lounge area with views of either Table Mountain or the hotel gardens. Connecting options to a Superior Room, Deluxe Room or Junior Suite. Maximum occupancy 3 persons using 1 rollaway bed.

DELUXE STUDIO SUITE - 9 Rooms

59-97 SQ M (635-1044 SQ FT)

These large open plan suites feature a luxurious and spacious bathroom, balcony or a terrace with mountain or garden views. With added space, they're a perfect choice for families travelling with children. Maximum occupancy 3 persons using 1 rollaway bed.

STUDIO SUITE - 6 Rooms

49-74 SQ M (527-796 SQ FT)

Light and airy, Studio Suites are open plan and feature a spacious bedroom and lounge area, a luxurious marble bathroom and views of Table Mountain or the hotel's gardens. Maximum occupancy 3 persons using 1 rollaway bed.

DELUXE JUNIOR SUITE - 14 Rooms

44-54 SQ M (473-581 SQ FT)

Deluxe Junior Suites are large open plan suites with a spacious bedroom and lounge area and a balcony or a terrace with garden or mountain views. These suites are perfect for families travelling with children. Maximum occupancy 3 persons using 1 rollaway bed.

JUNIOR SUITE - 15 Rooms

39-48 SQ M (420-516 SQ FT)

For guests requiring more spacious accommodation, Junior Suites offer a bedroom with an open-plan lounge area. Views of Table Mountain or the hotel gardens. Connection options to another Junior Suite or a One Bedroom Suite. Maximum occupancy 3 persons using 1 rollaway bed.

DELUXE ROOMS - 77 Rooms

32-45 SQ M (345-485 SQ FT)

Deluxe rooms include a lounge area and an en-suite bathroom. Connecting options to another deluxe room, which is perfect for families. Maximum occupancy 3 persons using 1 rollaway bed.

SUPERIOR ROOMS - 34 Rooms

25-45 SQ M (270-485 SQ FT)

These inviting rooms are perfect for a plush king-size or twin bed arrangement. Connection options to another Superior Room or a One Bedroom Suite and so work well for families travelling with children. Maximum occupancy 2 persons.

MOUNT NELSON



WINING AND DINING

OASIS

Breakfast, 06h30 - 10h30

Seasonal lunch from Monday to Saturday, 12h00 - 15h00

Summer dinner from Thursday to Monday, 19h00 - 23h00

Immerse yourself in the vibrant flavors of Cape Town with our dinner concept, celebrating the provenance of summer in the Western Cape. Sourced within the boundaries of Cape Town Municipality or the Western Cape. The dishes are prepared over wood flames, hot coals, or the warmth of smoke, giving you the authentic taste of Cape Town. For a lunch experience like no other, indulge in al fresco dining amidst our serene surroundings.

SUNDAY JAZZ BRUNCH AT OASIS

12h00 - 15h00

Sunday brunches are for swinging to jazzy musical feasts at The Nellie. Add a champagne sparkle with an option for unlimited bubbly. Access to the professionally supervised Children's Club is also included for little ones, so you can sit back and start your Sunday in style.

AFTERNOON TEA

Wednesday to Sunday, 12h00 - 14h00 and 15h00 - 17h00

Enjoy the most iconic Afternoon Tea in Africa. Head Pastry Chef, Vicky Gurovich and South Africa's first expertly trained tea sommelier, Craig Cupido, have curated a menu that presents five delicacies from the tea service, with a perfectly matched global tea pairing. "Tea at the Nellie" has become a much loved Cape Town tradition. Vegan, gluten-free and kids options available.

HARVEST TABLE

Available year-round, subject to availability

In the gardens accompanied by a selection of seasonal and innovative multi-cultural dishes served family-style to the table. Perfect for any celebration or just a long lazy lunch with friends and family. Picnics are available from October to April, weather dependent, from Wednesdays to Sundays, 12h00 - 18h00

THE LOUNGE

Lunch, 12h00 - 15h00

Lunch can be enjoyed in The Lounge from an all-day à la carte menu.



THE CHILDREN'S CLUB - RESIDENT FAMILIES

Our centre for children aged 4 to 12 offers a range of educational games and toys. Organized activities, from group games to storytelling, take place throughout the day and a more detailed program is on offer during the Festive Season.

Activities include:

- Crazy Clay Animals
- Scratch Art
- Beading
- Sand Art
- Magnet Making
- Playdough Fun
- Water colours
- Board Games
- Movies

Open all year round on Saturday and Sunday: 10h00 - 17h00

Closed between 13h00 and 14h00

ACTIVITIES - RESIDENT FAMILIES

WITHIN OUR WALLS

- Enjoy our supervised children's club
- Oversized heated family swimming pool
- Spa treatments tailored for families with children
- Enjoy a game of tennis on our floodlit courts, and improve your game with a tennis lesson with resident tennis coach, Barkie McKrea

OUT AND ABOUT

- Hop into a chauffeured vintage sidecar to explore the city in style or be chauffeured in a gleaming classic car to the majestic Cape Winelands for a tasting or lunch*
- Head out to the soft white sands of Boulders Beach for a unique audience with rare African Penguins.
- Visit the Norval Foundation or the Zeitz MOCAA Art Museums, both offering educational family programs
- Enjoy our pristine Cape Town beaches nearby
- Take an unforgettable trip up Table Mountain, a wondrous Cape Town landmark

MOUNT NELSON



FAMILY FUN

Our hotel is perfect for family adventures or relaxing stays with your little ones. We offer tasty children's menus and highchairs in the restaurants, a babysitting service on request and an array of activities on offer at our supervised kids club.

KIDS CLUB

Open all year round on Saturday and Sunday, 10h00 – 17h00

Open daily during festive season, 10h00 – 18h00

Closed between 13h00 and 14h00

Children aged 4 to 12 can enjoy a range of creative and engaging activities including mosaic making, biscuit decorating and sand art. Organized activities, from group games to storytelling, take place throughout the day.

IF ONLY TREES COULD TALK

A zippy one-hour self-guided walking tour of iconic trees in the tranquil gardens, of the Nellie, which reveal many fascinating threads of Cape Town's history. Trees such as the eighty Canary Island palms that line the driveway entrance. And the nearly 200-year-old wild Olive Tree have borne silent witness to the colourful ebb and flow of historic events in the Cape and indeed of this historical 125 year-old property.

CAPE TOWN WALKING TOUR

Kate Crane Briggs is an expert in art and architecture, Tailor your 1 hour walking tour to your interests - whether it's history, visual arts, architecture, cuisine or literature. Beginning in the hotel's 123-year-old estate, you'll see the city like never before, including special access to studios and collections not usually open to the public. A typical tour can include, an artist's studio, mosaic workshop, Bo-Kaap, Auwal Mosque and Parliament.



OUTDOOR RELAXING

POOL CABANAS

Indulge in the epitome of exclusivity! Secure an all-day sanctuary for up to six guests, open to both residents and non-residents. Our cabana promises a lavish and private escape, designed for you to relax and relish the day in style. Enjoy a wealth of amenities and curated services that redefine luxury, ensuring an unforgettable experience. Weather dependent.

SWIMMING POOL

Relax and soak up the views from our heated infinity swimming pool. For family fun, our large heated main pool is suitable for all ages. Or find a quiet spot by our heated Garden Cottages pool, reserved for over-16s. During the summer months, refreshments are available from our pool attendants.

EXPLORE THE GARDENS

OUR GARDENS

With Table Mountain as your backdrop, every moment is momentous. Indulge in afternoon tea by the Garden fountain or savour a light snack with a glass of something chilled. Sit down to a relaxed harvest table lunch or stage a dream celebration on the luxuriant lawns.

SECRET GARDEN

Tucked away behind the pool between palm trees is the Secret Garden, a private space that can be used as an intimate dining area for The Harvest Table or a laidback picnic.

CHEF'S GARDEN

Located near the hotel gym our flourishing Chef's Garden provides our kitchens with both traditional herbs and local delicacies. Featured in our gardens is indigenous Dune Spinach (*Tetragonia decumbens* or 'kinkelbos' in Afrikaans) a salty, low growing shrub can be eaten both raw and cooked.

MIXOLOGIST GARDEN

Blooming edible flowers and fragrant herbs fill the beds of the Mixologist Garden that sits alongside Mount Nelson tennis courts. Filled with flavours.