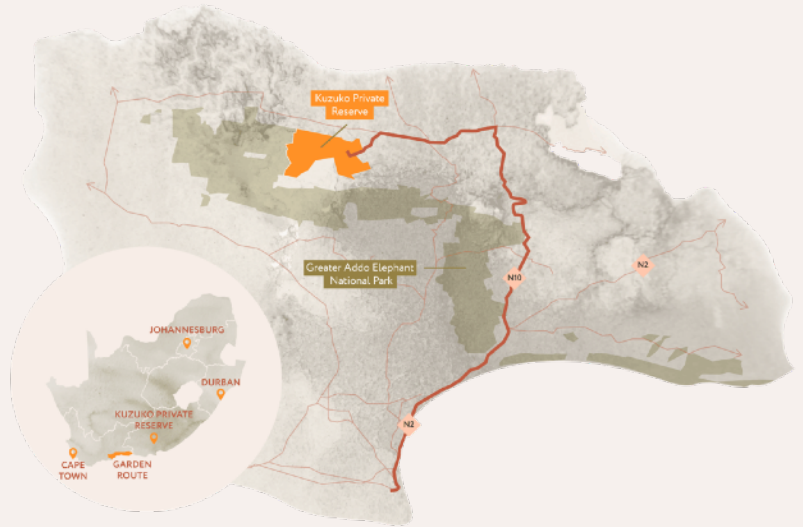


kuzuko

Getting to Kuzuko

Kuzuko is ideally located at the end of the Garden Route in the malaria free Eastern Cape.

Like all the best adventures, Kuzuko is just off the beaten track - far enough away from the bright lights to be a proper wilderness experience with untouched night skies, yet still easily accessible from Port Elizabeth Airport.



Transfer

A transfer is the easiest way to get from Port Elizabeth and takes approximately 2.5 hours. Please contact reservations@kuzuko.com to arrange a transfer.

Self Drive

Kuzuko is easily accessible as a self drive from Port Elizabeth with 100km of highway and 50km of dirt road taking approximately 2.5 hours. A minimum of a small SUV is recommended.

Air Transfer

With a help pad and an airstrip at Kuzuko, air transfers can be arranged for those who would like to arrive in style.



Directions to Kuzuko

1. From the airport follow signs for the N2 towards Grahamstown
2. Follow the N2 along the coast – after 40km you will pass the small town of Colchester
3. After Colchester the highway turns inland and after a further 12km the N2 splits off and the highway turns into the N10 – continue straight onto the N10
4. 20km after the split you will pass the small town of Paterson – continue straight
5. After Paterson you will go over the Olifantskop pass - continue straight over the pass

6. Once you have descended the other side of the pass continue along the N10 for another 20km after which you will see a large green sign for a cross road – take the left turn onto the dirt road marked Jansenville R400
7. Continue straight along the R400 dirt road for 18km until you hit a small section of tar road and T junction where you will turn right following the signs for Kuzuko
8. After 500m keep left at the junction and keep following the signs for Kuzuko
9. After a short stretch of tar the road once again becomes dirt
10. Continue straight on the dirt road for 11km passing a small petrol station on your (the petrol station is not always open) then make a left turn at the sign for Kuzuko
11. Immediately after the left turn you will pass through an electric gate for Copper Moon – you are now entering a wildlife area so please drive carefully
12. Continue straight for a further 11km until you pass another electric gate which is the entrance to Kuzuko
13. After another 1km you will come to our reception building on your left – you have arrived!



Please contact Kuzuko prior to departure with your ETA. Conditions on the dirt road can vary depending on recent weather - the reservations team can give you up to date information on the status of the roads and any important information prior to your departure.

reservations@kuzuko.com - jacome@kuzuko.com

Tel: +27 42 203 1700 - WhatsApp: +27 63 681 3552

www.Kuzuko.com