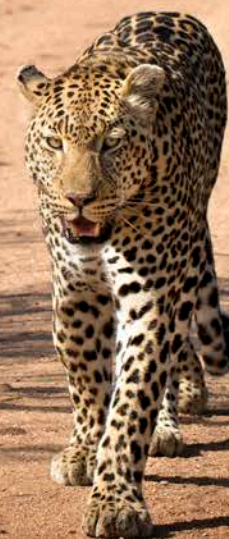




SBYOND

DISCOVER

The Sabi Sand Nature Reserve



An exclusive safari haven



The Sabi Sand Nature Reserve is one of the most prestigious private game reserves in South Africa, and is famous for its incredible leopard sightings. The reserve shares an unfenced boundary with the 2-million hectare Kruger National Park, and is home to one of the richest wildlife populations in the country.

DISCOVER SABI SAND NATURE RESERVE

Why visit the Sabi Sand?

Adjacent to the world-renowned Kruger National Park, the Sabi Sand Nature Reserve is not only famed for its intimate wildlife encounters, but also for its elite luxurious lodges and exclusive experiences.



1

PRISTINE LOCATION

Sharing an unfenced border with the world-renowned Kruger National Park, the Sabi Sand Nature Reserve is famed for its intimate wildlife encounters, particularly leopard viewing and the Big Five. The uniqueness of the &Beyond lodges are their ideal positioning on the Sand River with exclusive access to the riverbed.



2

ICONIC WILDLIFE

In addition to incredible leopard viewing, and the famous Big Five, discover a vast variety of plant and animal species that share 2-million hectares of unfenced terrain with the Kruger National Park. Encounter a few of the over 500 bird species, 145 animal species, 110 reptile species and 45 fish species, that call this vast landscape home.



3

FINEST GUIDES AND SAFARIS

Highly-knowledgeable &Beyond-trained guides can offer you night drives as well as specialist safaris, such as walking, tracking, photography or birding. All safaris can be tailor-made for private groups, families or specialist interests.



4

EXCLUSIVE PROPERTY

&Beyond has exclusive traversing rights on 10 500 hectares (26 000 acres) of wilderness land, which means you can explore the reserve on-foot, free from the constraints of roads and vehicles, go on a night drive, or sensitively go off-road enabling closer wildlife interactions.

DISCOVER THE SABI SAND NATURE RESERVE

Why travel with &Beyond?

1 TRAVEL WITH HEART

Our core ethos of "Care of the Land, Wildlife & People" drives all that we do. When you travel with us you make a meaningful contribution to the preservation of our world's cultures and wildlife and leave with an opportunity to gain first-hand experience in some of our conservation and community initiatives.

2 IN OUR HANDS

We are on call 24/7 to assist you throughout your journey. Over 2 000 &Beyonders, including guides and ground logistic teams on three continents, means that you are in our hands from the moment you arrive to the moment you leave. Additionally, we offer a personal concierge service that is only a phone call away should you require any assistance at any point during your trip.

3 FINEST GUIDES

We operate three ranger training schools and are renowned for having the most highly-trained, professional and knowledgeable guides, rangers, naturalists and trackers, who offer cultural insights as well as interpretive wildlife experiences.

4 TRAVEL EXPERTS

Big or small we are all about tailoring trips around your specific interests and expectations. Our expert travel specialists are able to personalise a range of experiences for individual travellers, groups, families, wedding parties, and special interest groups.

5 PERFECT MOMENTS

With journeys lovingly crafted of perfect moments, you will return from an &Beyond adventure feeling that nothing will take your breath away quite like this ever again. Our collection of signature experiences are often exclusive to &Beyond, ensuring a unique adventure.



The staff were excellent, the food delicious,
the accommodation beautiful, the camp
perfect and the sightings off the charts. ”

&BEYOND GUEST

DISCOVER THE SABI SAND NATURE RESERVE

Travel South Africa and beyond

South Africa has an excellent travel network that makes it easy to reach any destination, by air or road.



GETTING TO THE SABI SAND

Airlink offers daily scheduled flights from Johannesburg to Skukuza airport, which is followed by an easy 20-minute drive to the lodges.

Connect Sabi Sand Nature Reserve to Johannesburg, Cape Town, &Beyond Ngala Private Game Reserve, or the northern Sabi Sand Nature Reserve (Londolozi and Ulusaba). All flights route through either Nelspruit or Skukuza, where layovers vary.

Private charters from anywhere in South Africa can be arranged to the Sabi Sand Nature Reserve.

It is five-hour drive from Johannesburg on good roads in a two-wheel drive vehicle.

TRAVEL TIMES

JOHANNESBURG

	5hrs 18mins (466.3 km) 2hrs 10mins (45mins layover)*	KRUGER NATIONAL PARK - NGALA PRIVATE GAME RESERVE			
	5hrs 22mins (452.1 km) 50mins*	2hrs 4mins (89.4 km) 45mins*	SABI SAND - SOUTH (SKUKUZA AIRPORT) - KIRKMAN'S AND TENGILE		
	6hrs 11mins (488.1 km) 2hrs 15mins*	1hr 18mins (46.8 km) 45mins*	1hr 51mins (80 km) Not available	SABI SAND - NORTH	
	6hrs 35mins (533.8 km) 3hrs 25mins (1hr 25mins layover)*	8hrs 48mins (657 km) 2hrs 10mins (20mins layover)*	7hrs 34mins (590 km) 3hrs 20mins (50mins layover)*	8hrs 40mins (636 km) 4hrs 45mins*	PHINDA
	14hrs 14mins (1 397.8 km) 2hrs 10mins*	19hrs 59mins (1 907 km) 3hrs 35mins*	19hrs 33mins (1 849 km) 4hrs*	20hrs 53mins (1 890 km) 4hrs*	20hrs 31mins (1 830 km) 4hrs 35mins (45mins layover)*
					CAPE TOWN

*Airlink flights may include layovers ranging from 20-minutes to 2-hours depending on routing. Return flight times may differ for this reason.

&BEYOND LODGES

- KRUGER NATIONAL PARK**
Ngala Safari Lodge
Ngala Tented Camp
- SABI SAND NATURE RESERVE**
Kirkman's Kamp
Tengile River Lodge
- PHINDA PRIVATE GAME RESERVE**
Phinda Mountain Lodge
Phinda Forest Lodge
Phinda Rock Lodge
Phinda Vlei Lodge
Phinda Zuka Lodge
Phinda Homestead

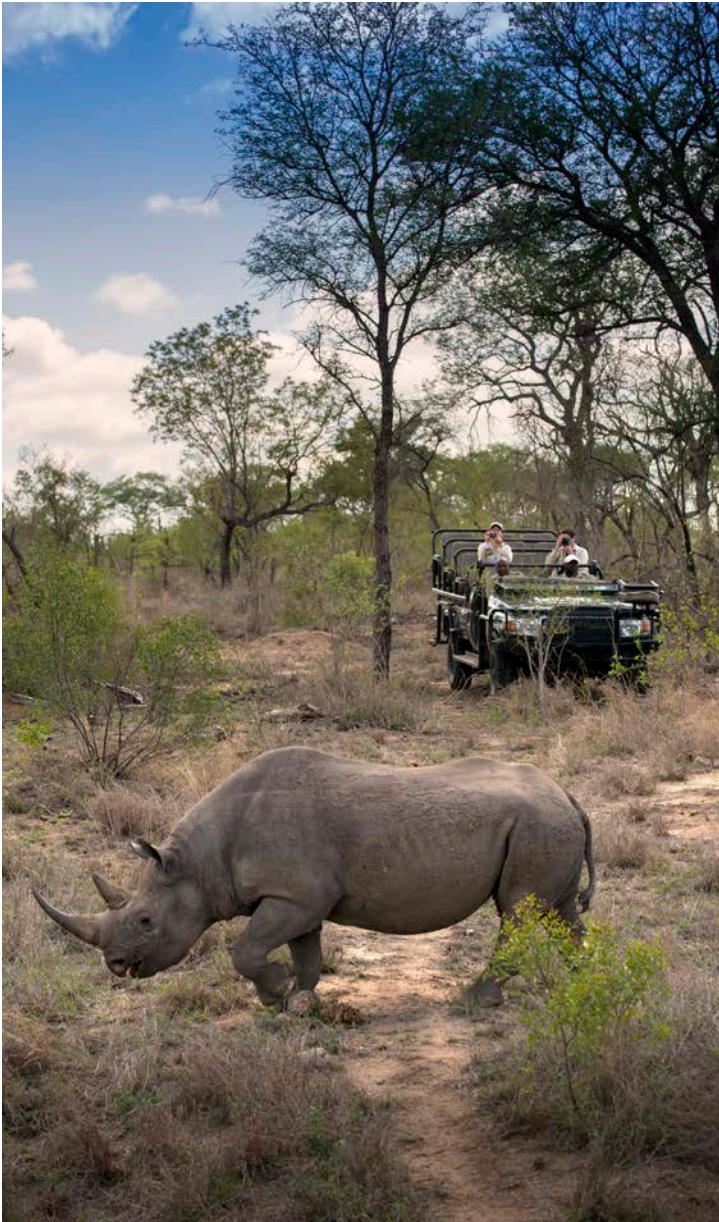
DISCOVER THE SABI SAND NATURE RESERVE

Regional information

Altitude	423 m (1 388 ft) above sea level.
Malaria area	The reserve is situated in a malaria area and necessary precautions should be taken.
Airstrip / Helipad	&Beyond Kirkman's Kamp and Tengile River Lodge are both served by Skukuza Airport.
GPS coordinates	24°56.088'S 031°33.559'E
Best time to travel	All year-round, with optimum game viewing from March to October.
Weather	Summer months (November to March) are hot and humid. Temperatures start to cool slightly in April, with the winter months (May to June) seeing warm days with cold nights. July to September is very dry, with cold night and early morning / late afternoon temperatures. Spring (September to October) is very dry, with hot winds.
Rainfall	The rain typically begins end of October. November to March may experience some rain, usually in the form of afternoon thundershowers. The rain begins to lessen from April.
Temperature averages	Summer: 12°C to 38°C / 55°F to 100°F Winter: 3°C to 32°C / 32°F to 90°F

Impossible to fault our stay. We were incredibly lucky to see the Big Five and and the birding was exceptional. ”

&BEYOND GUEST



DISCOVER THE SABI SAND NATURE RESERVE

Sustainability initiatives

In collaboration with Africa Foundation, our long-standing community and conservation development partner.



CARE OF The Land

- 53 362 Plastic water bottles eliminated per year by &Beyond Mpumalanga* lodges as a result of on-site bottling plants
- 40 000 Litres, daily average reuse of wastewater by our Sabi Sand lodges
- 100% of our &Beyond Mpumalanga lodges have advanced wastewater treatment plants
- 5.4 Kg CO₂ per head reduction annually in our Mpumalanga region since 2018
- 98% Achieved by &Beyond Ngala Private Game Reserve in an environmental audit conducted by the specialist Rhengu Environmental Services
- 18% improvement in &Beyond Mpumalanga sustainability audit scores since 2016, highlighting a progressive reduction of our direct carbon footprint through a system of &Beyond Group goals



CARE OF The Wildlife

- 64 Learners and teachers received conservation lessons in 2019, with the aim not only to educate, but also develop an understanding of the interdependence of conservation and community empowerment
- 25 200 Hectares of rich biodiversity significantly influenced by &Beyond Ngala Private Game Reserve (14 700 Ha) and Sabi Sand Game Reserve (10 500 Ha)
- 414 000 ZAR contributed in annual park fees, July 2019 – March 2020
- 984 Leopard sightings documented by &Beyond Sabi Sand guides in 2018 in collaboration with Panthera's regional leopard research programme



CARE OF The People

- 29 Years of compounded positive impact, across 23 local communities
- 50 Million ZAR annual disbursements to Mpumalanga communities, 2018 - 2020
- 55 % Local community staff to total employees at our &Beyond Mpumalanga lodges
- 272 CLEF tertiary education bursaries granted to 206 young Mpumalanga leaders through this legacy-building Africa Foundation programme
- 28 Million ZAR local-procurement spend by &Beyond Mpumalanga, 2018 - 2020
- 17 Million ZAR social infrastructure investment in collaborative, community-led projects
- 3.2 Million ZAR donor funding for Bilton High School, Thlvekisa, close to &Beyond Ngala Private Game Reserve, in a community project spanning 7 years

A male lion with a thick, golden-brown mane stands prominently in the foreground, facing slightly to the left. He is positioned on a sandy bank with sparse green grass. In the background, a green safari vehicle is parked on a dirt path, with several people inside, including a driver and passengers. The scene is set in a lush, green savanna environment with tall grass and dense foliage. The lighting suggests a warm, golden hour, creating a serene and adventurous atmosphere.

DISCOVER THE SABI SAND NATURE RESERVE

Adventures of a lifetime

Encounter iconic wildlife on an &Beyond
African safari, and enjoy an array of private
and specialist experiences.

DISCOVER THE SABI SAND NATURE RESERVE
Adventures of a Lifetime

Experiences and highlights

In between your twice-daily game drives, why not take a nature walk with your guide, or indulge in a luxurious wellness treatment.



1

SAFARI GAME DRIVES

Enjoy twice-daily game drives that set off early in the morning or late in the afternoon (continuing after nightfall) in the company of expert safari guides and local trackers who will do their best to ensure that all your wishes are met. In addition to the Big Five (lion, leopard, rhino, elephant and buffalo), each safari features an iconic set of wildlife and an opportunity to encounter the famous Sabi Sand leopard.



2

NATURE WALKS

Experience a range of natural wonders in the company of your experienced professional guide on a nature walk. Learn how to track, seeing how close you can come to smaller game, such as impala and zebra, without them being aware of your presence. Each bush walk is accompanied by an expertly-trained and qualified guide, who follows strict protocols to ensure your safety and comfort.



3

LOCAL COMMUNITY VISITS

A community visit provides a first-hand experience of the projects Africa Foundation, our long-standing community and conservation development partner, is facilitating and supporting to enable future leaders, healthy ecosystems, future foundations and thriving communities. Visit projects in the Huntingdon and Justicia communities, such as the Happy Homes Preschool or nearby Madilika Craft Centre.



4

WELLNESS TREATMENTS*

After a safari-filled day indulge in the pleasures of a Healing Earth wellness treatment either in-room or in your lodge's tranquil spa or massage sala. &Beyond has partnered with Healing Earth, a leading natural, holistic spa and skincare company, to produce a truly authentic African spa experience for the mind, body and soul.



5

WEDDINGS*

From a classic safari wedding in the open bush to a sunset ceremony overlooking a spectacular view or a walk down the aisle in the dry bed of an African river, our meticulous wedding planners can put together a celebration filled with breathtaking moments and joyful surprises that will pamper and delight any couple.

*These experiences and highlights are at an additional cost and subject to availability.

DISCOVER THE SABI SAND NATURE RESERVE
Adventures of a Lifetime

Specialist safaris and trips

When booking a private vehicle and specialist guide, our safaris can be tailor-made to suit a wide range of interests.



1

SHANGAAN VILLAGE TOUR

Visit a Shangaan community, situated just outside Sabi Sand Nature Reserve, and interact with the friendly people of Mpumalanga. A Bantu tribal group, the Shangaan are the dominant group in the northeast of South Africa. A local guide will escort you through the village, sharing interesting insights and narratives about Shangaan culture, including its fascinating customs, beliefs and traditions.



2

PRIVATE GAME DRIVES

A private safari game drive allows you to explore the concession at your own pace while focusing on your special interests. With your own dedicated ranger and tracker team, in your own private 4x4 safari vehicle, &Beyond's exclusive private safaris let you create your very own tailor-made wildlife adventure.



3

FAMILY SAFARIS

The Sabi Sand Nature Reserve welcomes all ages, and is the ideal reserve for nature-loving families wishing to spend some much-needed quality time in the African bush. Tailor your safari experience to suit the whole family. Both &Beyond Kirkman's Kamp and Tengile River Lodge also feature a spacious Family Cottage and Family Suite respectively.



4

BIRDING SAFARIS

Birding safaris are just one of &Beyond's many unrivalled specialist safaris that can be personalised for any small group. Accompanied by one of &Beyond's specialist birding guides, set out in search of over 300 bird species that inhabit the Sabi Sand, notable ones including the bateleur, black-bellied bustard and comb duck.



5

WALKING SAFARIS

Dependant on the availability of a specialist guide, your ranger and tracker will tailor your walking experience to suit your personal requirements and preferences. Whether it be to follow a specific animal, unravelling the details of its daily life, or to spend the whole day exploring, a walking safari offers the opportunity to experience Africa at its wildest and most personal.

DISCOVER THE SABI SAND NATURE RESERVE
Adventures of a Lifetime

Year-round activities

- ✓ Big Five game viewing
- ✓ Private game drives*
- ✓ Night drives*
- ✓ Nature walks*
- ✓ Specialist walking safaris*
- ✓ Specialist family safaris*
- ✓ Specialist birding safaris*
- ✓ Local community visits
- ✓ Shangaan village tour
- ✓ Boma dinners*
- ✓ Bush-dining*
- ✓ Sundowners*
- ✓ Wellness treatments
- ✓ Safari Shop
- ✓ Weddings

**Subject to availability of a private vehicle, specialist guide or tracker, or are weather dependent*



In terms of game viewing - dreams came true
and we got stunning sightings of all the Big Five
and mostly importantly the elusive leopard. ”

DISCOVER THE SABI SAND NATURE RESERVE
Adventures of a Lifetime

Timing is everything

	JAN	FEB	MAR	APR	MAY	JUN	JUL	AUG	SEP	OCT	NOV	DEC
Tracking or walking safaris: Winter – cooler walking conditions during the day					✓	✓	✓	✓	✓			
Photography: Summer – landscapes are lush and green with full watering holes and lots of animals	✓	✓	✓						✓	✓	✓	✓
Night drives: Summer – although offered year-round, the summer months are best as evenings are warmer	✓	✓	✓	✓					✓	✓	✓	✓
Baby animals: Summer – typically at the start of the rainy season	✓	✓									✓	✓
Game viewing: Winter to early spring – animals are known to gather around waterholes and are easier to spot in the thinned-out bush					✓	✓	✓	✓	✓	✓		
Birding: Year-round – however, if you'd like to see lots of birds then summer is best when the migrant birds return	✓	✓	✓							✓	✓	✓



A photograph of a lodge deck at dusk. A large, ancient tree with thick branches stands on the left, its leaves silhouetted against a pink and blue sky. A wooden deck with a railing extends from the right, featuring a small table with chairs and several lit lanterns. A swimming pool in the foreground reflects the warm light of the lanterns and the sky. In the background, a river flows through a lush, green landscape.

DISCOVER THE SABI SAND GAME RESERVE

Lodge overview

Our two lodges in the Sabi Sand are perfectly positioned on a crest of the Sand River.

DISCOVER THE SABI SAND NATURE RESERVE

Accommodation Overview

Our lodges in the Sabi Sand

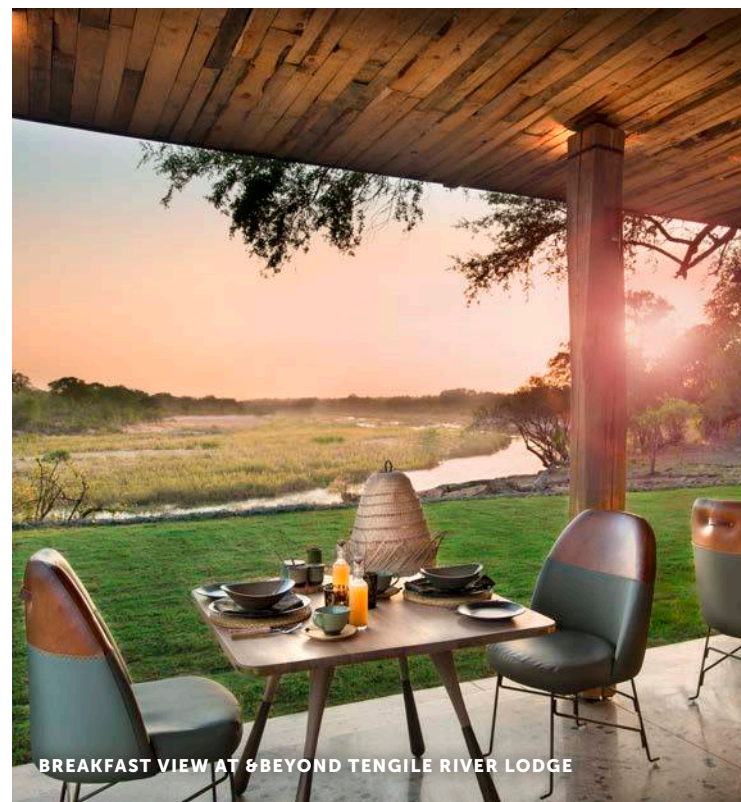
Guests staying with &Beyond in the Sabi Sand have the privilege of traversing 10 500 hectares (26 000 acres) of exclusive-use land that is home to two magnificent safari lodges.

&BEYOND KIRKMAN'S KAMP

Located high on a ridge of the reserve, overlooking the picturesque Sand River, lies Kirkman's Kamp. A lodge with a rich history, Kirkman's expertly maintains the classical safari ambience of the original 1920s homestead that once stood on the very same spot. Boasting spectacular views of the unspoiled landscape that surrounds the Sand River, the lodge features 12 Cottages, including a Family Cottage. Here, old meets new; with classic-styled decor seamlessly blending with modern comforts, while sweeping verandas, rolling lawns and inviting spaces create a warm and welcoming atmosphere. Kirkman's Kamp welcomes large groups and families, offering a special WILDchild programme for children aged 3 – 12 years.

&BEYOND TENGILE RIVER LODGE

Situated in a perfect position on the banks of the Sand River, with panoramic river views from every vantage point, lies Tengile River Lodge. Meaning 'tranquil' in the local language, the lodge certainly has an advantage over all others in the Sabi Sand Nature Reserve. This spectacular lodge features nine enormous, air-conditioned, secluded Suites (including a Family Suite); sensitively nestled, unlike any other lodge in the Sabi Sand, within the riverine forest offering unparalleled close views of the Sand River. In addition to a master bedroom, bathroom and outdoor shower in each Suite, there is a lounge, dining area, fully-stocked bar, coffee station and outdoor seating and dining area that is guaranteed to take your breath away. A private lap pool on your spacious private deck comes complete with sunken outdoor lounge looking out onto the famed Sand River.





DISCOVER SABI SAND NATURE RESERVE

&Beyond Kirkman's Kamp

Located high on a ridge, overlooking the magnificent Sand River, lies a lodge with a rich history and a safari experience like no other in the world.

DISCOVER THE SABI SAND NATURE RESERVE &Beyond Kirkman's Kamp

Why stay?

1 WORLD CLASS LOCATION

The Sabi Sand Nature Reserve is one of the most prestigious wildlife sanctuaries in the world, with unfenced borders neighbouring the Kruger National Park, and is famed for its leopards and incredible wildlife. The uniqueness of the lodge is its ideal positioning on the Sand River with exclusive access to the riverbed.

2 BIG FIVE WILDLIFE

In addition to incredible leopard viewing, and the famous Big Five, discover a vast variety of plant and animal species that share 2-million hectares of land with the Kruger National Park. Encounter a few of the over 500 bird species, 145 animal species, 110 reptile species and 45 fish species, that call this vast landscape home.

3 TRAVERSING RIGHTS

Kirkman's Kamp has exclusive traversing rights on 10 500 hectares (26 000 acres) of wilderness land, which means our guests can explore the reserve on-foot, free from the constraints of roads and vehicles, go on a night drive, or sensitively go off-road enabling closer wildlife interactions.

4 FAMILY FRIENDLY

Kirkman's Kamp welcomes families and offers an incredible, fun-filled WILDchild experience, including croquet and cricket on the lawns, a game of tennis and cookie baking. The variety of children's activities tie in with the particular environment, as well as the local heritage and culture of the region. The lodge's Family Cottage is ideal for safari-loving families.



It's the most magical place I have ever been (honestly)! We were totally blown away with the lodge and the destination.



&BEYOND GUEST

DISCOVER THE SABI SAND NATURE RESERVE

&Beyond Kirkman's Kamp

Lodge amenities



1

SWIMMING POOL

The sparkling rim flow swimming pool is incredibly inviting in the lowveld heat. Boasting fantastic views over the river, this is the perfect place not only to refresh, but to enjoy delectable meals and cocktails.



2

SAFARI SHOP

The Safari Shop boasts a range of quality, handpicked crafts and fashion wear showcasing the very best facets of the region, including stunning jewellery designed and fashioned by artisans from the local community, who draw on ethnic styles and motifs.



3

TENNIS COURT

Enjoy a friendly game of tennis played on the very court that was originally opened by legendary tennis player Billie Jean King.



4

SAFARI ACCESSORIES

A complimentary pair of SWAROVSKI OPTIK CL Companion 8x30 binoculars, for your use throughout your stay, as well as a take-home Guides' Journal featuring wildlife checklists and maps.



5

PAUL'S PUB

Named after the owner's father Paul, this bar is the central hub of the lodge. Each evening, guests meet here for drinks with their guide and fellow guests before dinner, recounting the sightings after a day's safari.

DISCOVER THE SABI SAND NATURE RESERVE

Beyond Kirkman's Kamp

Lodge amenities



6

BOMA

After your evening game drive, enjoy a pan-African al fresco dinner under the stars and around the open blazing fire in the lodge's traditional boma.



7

SPA WELLNESS TREATMENTS

Enjoy a relaxing wellness massage or treatment, using only 100% natural Healing Earth products, in the comfort and privacy of the lodge's exquisite massage room overlooking the riverbed below.



8

LIBRARY

The library offers a sanctuary filled with interesting reads, while the classical sitting room provides the perfect setting to enjoy a cup of tea and board game.



9

PERSONAL BARS

Your cottage boasts a private mini-bar and coffee station, to be enjoyed during the quiet moments in your room.

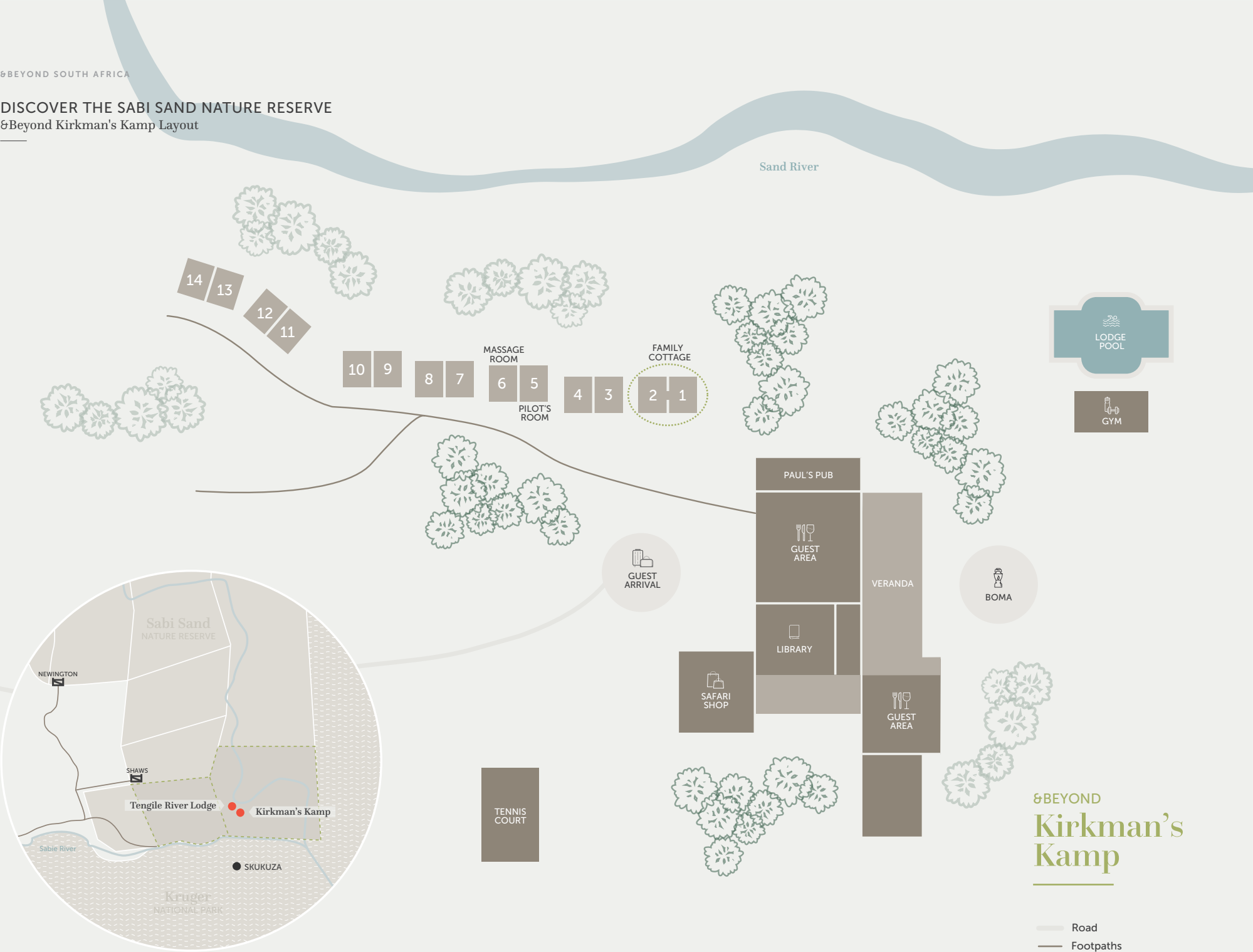


10

DINING LOCATIONS

Enjoy your meals in a variety of al fresco locations such as the outdoor boma area, the lush lawn overlooking the river, the swimming pool or the privacy of your room.

DISCOVER THE SABI SAND NATURE RESERVE
&Beyond Kirkman's Kamp Layout



&BEYOND
**Kirkman's
Kamp**

DISCOVER THE SABI SAND NATURE RESERVE
&Beyond Kirkman's Kamp

Lodge overview

LODGE

Maximum number of guests	25
Number of cottages	12
Cottage types	12 Cottages, including 1 Family Cottage
Family accommodation	Children of all ages are welcome 1 triple cottage (for children 16-years and younger only) 1 interconnected Family Cottage (max. 2 adults and 2 children)
WILDchild programme	Yes
Pilot / Guide accomodation	Yes
Distance between rooms	3 to 6 m (9.8 to 19.6 ft) between cottages Each cottage is adjoined to one other cottage
Check in / Check out times	14h00 / 11h00, with early check-in and late check-out on request
Lodge closure	Open year-round

DINING

Food / Dietary options	Kosher and Halaal available upon request and at an additional cost Please advise the lodge in advance with at least four weeks' notice
Private butler service	Yes
Plated service	Yes
Private dining	Yes

PAYMENT TYPES

Credit cards accepted	Visa, Diners, Amex and Mastercard
Currency	All major currencies accepted

FACILITIES

Power	220v AC (50 Hz) plug points in rooms
Internet access	Yes, Wi-Fi in suites and guest area
Wine store or cellar	Wine store
Boma	Yes
Bar	Yes
Interactive kitchen	No
Swimming pool	Yes, lodge swimming pool
Wellness offering	Spa overlooking the riverbed
Fitness centre	Yes
Conference facilities	No
Weddings & blessings	Yes
Wheelchair access	Yes, with assistance, but not recommended
Complimentary laundry service	Yes
&Beyond Safari Shop	Yes

OTHER

Vehicle type	Nine-seater open safari vehicle Max 6-7 per vehicle
Private 4x4 safari vehicle	Yes, depending on availability and at an additional cost

DISCOVER THE SABI SAND NATURE RESERVE
&Beyond Kirkman's Kamp

Inclusions

RATE INCLUDES

Accommodation	✓
Three meals daily	✓
Soft drinks, house wines, local brand spirits and beers, teas and coffees and refreshments on game drives	✓
Laundry	✓
Safari activities	✓
One-hour nature walks accompanied by experienced armed trackers – subject to availability	✓
Emergency medical evacuation insurance	✓
VAT	✓
Transfers to-and-from Skukuza Airport	✓
A complimentary pair of SWAROVSKI OPTIK binoculars per room for use during your stay	✓

RATE EXCLUDES

Administration fee	×
Telephone calls	×
Safari Shop purchases	×
Gratuities	×
All items of a personal nature	×
Champagne, cognacs, fine wines, premium brand spirits and cigars	×
Government bed levy	×
Conservancy or park fees	×
Landing fees	×

NOTE: Unmanned Aerial Vehicles: Please be advised that the use of unmanned aerial vehicles (drones) are prohibited in the conservation areas we manage, until such time as their impact on wildlife and anti-poaching initiatives can be assessed. This rule will apply throughout Africa, as our partners in various countries and regions have adopted a similar stance.



DISCOVER THE SABI SAND NATURE RESERVE

&Beyond Kirkman's Kamp

WILDchild

&Beyond Kirkman's Kamp offers a range of fascinating and entertaining activities for children aged 3 – 12 years, bringing alive the magic of Africa. Whilst on a family safari, you can rest assured that your children will always be safe and well cared for (both on and off game drives). Every minute is supervised by our guides and lodge staff, who provide hours of amusement and invaluable information to the children in their care.

WHY WE LOVE &BEYOND'S FAMILY SAFARIS

- Special WILDchild programme for children aged 3 - 12 years
- Each WILDchild receives a backpack filled with age-appropriate goodies
- Activities are seasonal and include bark rubbing, bug collecting, frog safaris, 'poo walks', baking with the chef and more
- Special children's menus available

FAMILY ACCOMMODATION

Family Cottage	Children of all ages are welcome
	1 interconnected Family Cottage (max. 2 adults and 2 children)
	1 triple cottage (for children 16-years and younger only)

CHILD POLICY*

0 – 6 years	Not permitted on game drive
6 – 12 years	Permitted on game drives at ranger's discretion. Not permitted on walks outside of the lodge grounds
12 – 16 years	Permitted on game drives and nature walks Not permitted on Specialist Walking Safaris

**The child policy applies to children participating on game drives with a private vehicle only. Children that share a vehicle with other guests not in their party, may be subject to activities only at the lodge manager's discretion.*

Please note: The lodge is not fenced off and children are required to have an adult accompanying them at all times.



The experiences of WILDchild were such fun and so informative. It's quite impossible to think of when the children last had such fun on vacation. ”

&BEYOND GUEST

DISCOVER & BEYOND KIRKMAN'S KAMP

Kirkman's cottages



&BEYOND SOUTH AFRICA

DISCOVER THE SABI SAND NATURE RESERVE
&Beyond Kirkman's Kamp Accommodation

Old world charm

&Beyond Kirkman's Kamp boasts 12 intimate Cottages, including 1 Family Cottage, each with glorious Sand River views. Each luxurious and spacious cottage consists of one bedroom with an ensuite bathroom and private veranda.



CONTEMPORARY & STYLISH BEDROOM



OUTDOOR SEATING WITH A VIEW



1920s GLAM BATHROOM

DISCOVER THE SABI SAND NATURE RESERVE
&Beyond Kirkman's Kamp Accommodation

COTTAGE

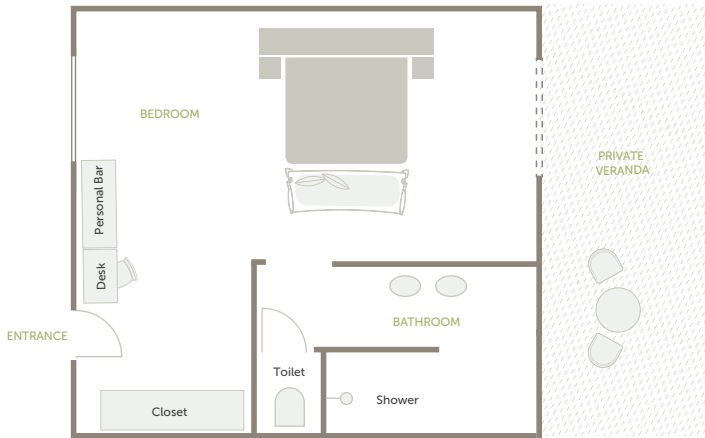
12 Cottages / Max. 2 guests per Cottage



SPECTACULAR VIEWS
Kirkman’s Kamp’s 12 air-conditioned guest cottages are reminiscent of an old farmstead, and each faces the glorious Sand River where elephants and other wild animals roam free. The cosy rooms each have an ensuite bathroom with a shower, plus a private outdoor veranda boasting magnificent Sabi Sand views.

ROOM FACILITIES

Cottage sizes	Approx. 34 m ² (111.5 ft ²)
Private veranda	Yes
Private plunge pool	No
Personal bar	Yes
Personal coffee station	Yes
Air conditioning / heating	Yes
Overhead fans	Yes
Mosquito nets	No, sealed room
Bath	No
Shower	Yes, indoor shower only
Seperate WC	Yes
Telephone	Yes
Hairdryer	Yes
Internet access	Yes
In-room safe	Yes
Plug type	220V AC Plug Type C, D, M, N Adapters available
Triple bed option	Yes, for children 3 – 16 years, sharing with one or two adults Subject to availability
Twin bed option	Yes
Double bed option	Yes
Wheelchair accessibility	Yes, with assistance, but not recommended



Typical Cottage layout

DISCOVER THE SABI SAND NATURE RESERVE
& Beyond Kirkman's Kamp Accommodation

FAMILY COTTAGE

1 interconnected Family Cottage / Max. 2 adults and 2 children

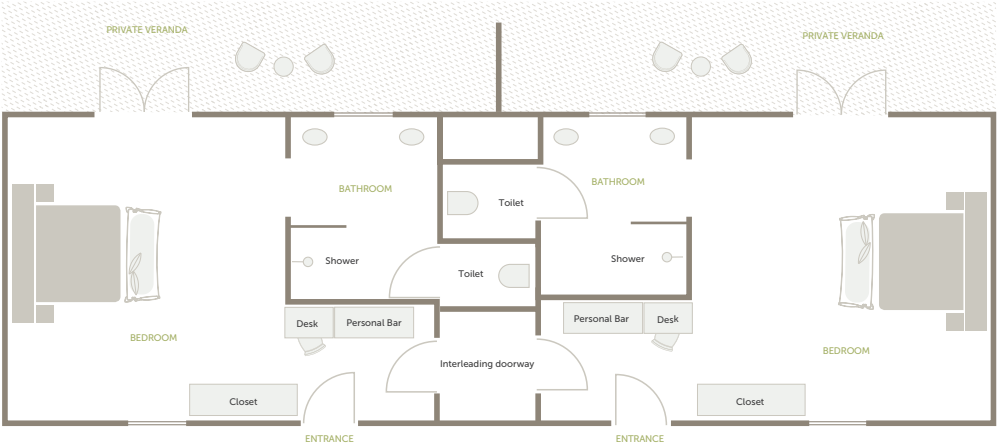


QUALITY FAMILY-TIME
Kirkman's Kamp has one Family Cottage, which is two regular cottages with an interleading doorway. The spacious Family Cottage has two bedrooms each with its own private ensuite bathroom and outdoor veranda. The interleading doorway between the two cottages provides families with the necessary privacy, but also allows for much-needed quality time.

ROOM FACILITIES

Cottage sizes	Approx. 34 m ² (111.5 ft ²) each – two cottages
Cottage configuration	Two cottages with an interleading doorway
Private veranda	Yes
Private plunge pool	No
Personal bar	Yes
Personal coffee station	Yes
Air conditioning / heating	Yes
Overhead fans	Yes
Mosquito nets	No, sealed room
Bath	No
Shower	Yes, indoor shower only
Seperate WC	Yes
Telephone	Yes
Hairdryer	Yes
Internet access	Yes
In-room safe	Yes
Plug type	220V AC Plug Type C, D, M, N Adapters available
Wheelchair accessibility	Yes, with assistance, but not recommended

Maximum two adults and two children (three children on request – third child must be 3 – 16 years old)



Family Cottage layout



DISCOVER SABI SAND NATURE RESERVE

&Beyond Tengile River Lodge

Situated in a perfect position on the banks of the Sand River, with sweeping river views from every vantage point, lies Tengile River Lodge.

DISCOVER THE SABI SAND NATURE RESERVE

&Beyond Tengile River Lodge

Why stay?

1 PRISTINE LOCATION

The Sabi Sand Nature Reserve is one of the most prestigious wildlife sanctuaries in the world, with unfenced borders neighbouring the Kruger National Park, and is famed for its leopards and incredible wildlife. The uniqueness of the lodge is its ideal positioning on the Sand River with exclusive access to the riverbed.

2 ICONIC WILDLIFE

In addition to incredible leopard viewing, and the famous Big Five, discover a vast variety of plant and animal species that share the land with the Kruger National Park. Encounter a few of the over 500 bird species, 145 animal species, 110 reptile species and 45 fish species, that call this vast landscape home.

3 TRAVERSING RIGHTS

Tengile River Lodge has exclusive traversing rights on 10 500 hectares (26 000 acres) of wilderness land, which means our guests can explore the reserve on-foot, free from the constraints of roads and vehicles, go on a night drive, or sensitively go off-road enabling closer wildlife interactions.

4 SUPERB VIEWS

The lodge has been designed to ensure magnificent river views from all angles. Private decks and al fresco sitting areas are the ideal places to view wildlife using your SWAROVSKI OPTIK binoculars as herds of elephants congregate in the riverbed and game roam across the landscape.



Tengile River Lodge was just magnificent and totally exceeded all our expectations. ”

&BEYOND GUEST

DISCOVER THE SABI SAND NATURE RESERVE

Beyond Tengile River Lodge

Lodge amenities



1

BOMA

After your evening game drive, enjoy a pan-African al fresco dinner under the stars and around the open blazing fire in the lodge's traditional boma.



2

FITNESS CENTRE

Unwind in the well-equipped gym, complete with treadmills, a wattbike, yoga mats, exercise balls and static weights so that you can continue your training in comfort.



3

HEALING EARTH TREATMENTS

Enjoy a relaxing Healing Earth spa treatment in the intimate massage sala where you can revel in a space of well-being and tranquillity with a glass of sparkling wine or a cup of herbal tea.



4

SAFARI ACCESSORIES

Each cottage comes with a complimentary pair of SWAROVSKI OPTIK CL Companion 8x30 binoculars, for your use throughout your stay, as well as a take-home Guides' Journal featuring wildlife checklists and maps.



5

SAFARI SHOP

Enjoy a visit to the lodge's beautiful Safari Shop where a range of premium, handpicked handicrafts and fashion showcases the very best facets of the region, including spectacular African jewellery, African Trade Beads Collection, and décor pieces.

DISCOVER THE SABI SAND NATURE RESERVE

&Beyond Tengile River Lodge

Lodge amenities



6

SWIMMING POOLS

Not only does each suite boast their own private plunge pool with a view, but there is also a main lodge pool to be enjoyed near the spa where you can watch the herd of elephant roam by.



7

FIREPIT

The firepit is another perfect place to gather after the evening game drive or after dinner. Sit around a crackling fire and unpack the day's events over a bottle of bubbly, or listening to tales of the bush from your guide with a steaming hot cappuccino.



8

LIBRARY

The library is a unique and cosy spot in the lodge where you can cuddle up with an interesting book from the bookshelf, gather your family for a board game, or just potter around and observe the interesting old photographs and artefacts.



9

BAR

The Tengile bar is certainly the heart of the lodge, with its unique design making it easy for all guests and staff to socialize after the days activities. Enjoy a selection of local craft beer or gin, while taking in the gorgeous view of the Sand River.

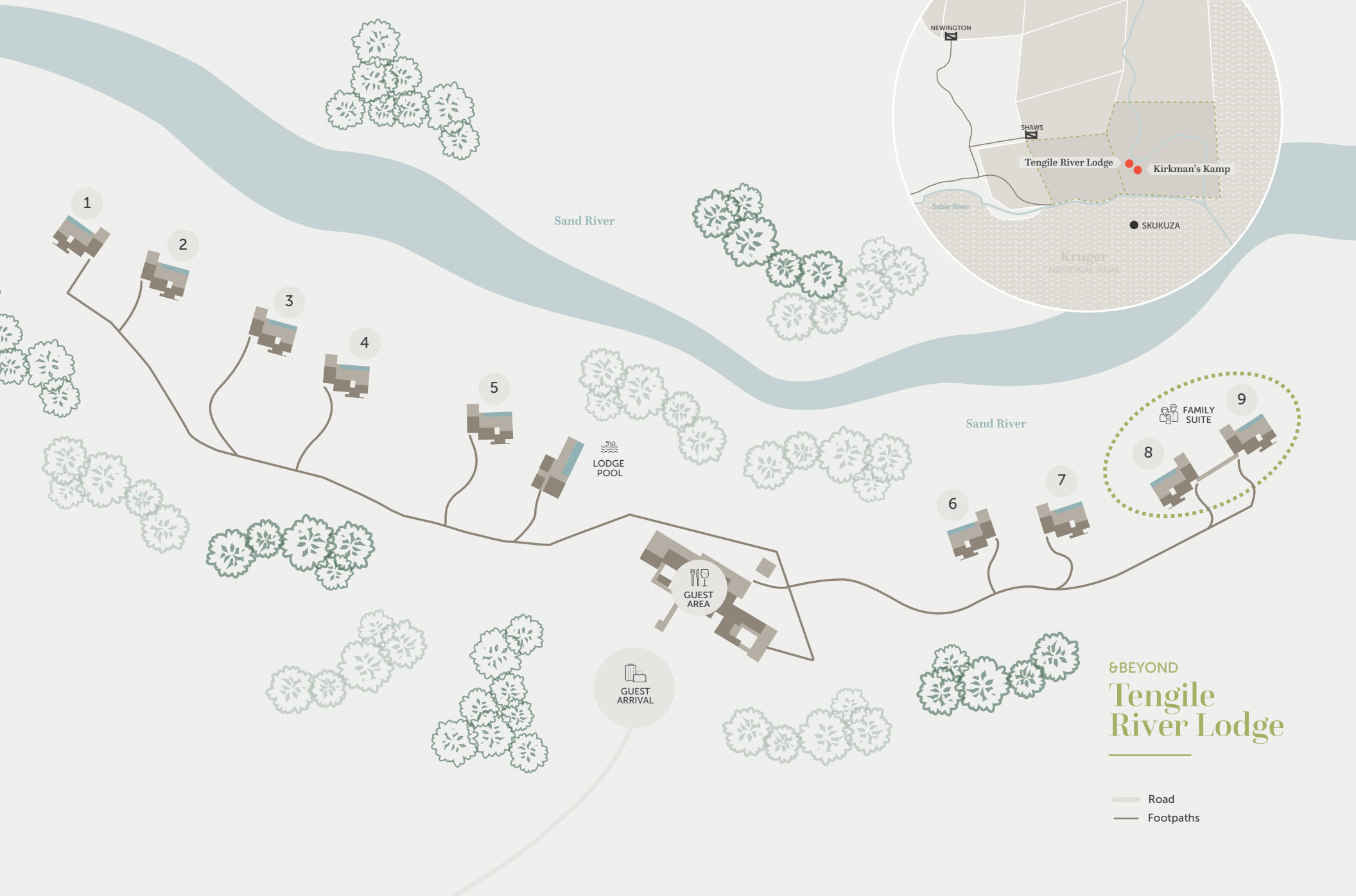


10

INTERACTIVE KITCHEN

Tengile is known for its world-class dining experience. If you are up for it, join the chef around the interactive kitchen and enjoy a complementary cooking lesson.

DISCOVER THE SABI SAND NATURE RESERVE
&Beyond Tengile River Layout



DISCOVER THE SABI SAND NATURE RESERVE

&Beyond Tengile River Lodge

Lodge overview

LODGE

Maximum number of guests	18
Number of suites	9
Suite types	9 Suites, including 1 Family Suite
Family accommodation	1 interconnected Family Suite with covered passageway (max. 2 adults and 2 children – 12-years and older only)
WILDchild programme	No
Pilot / Guide accommodation	Yes
Distance between suites	10 to 30 m (32 to 98 ft) between suites
Check-in and check-out times	14h00 / 10h00, with early check-in and late check-out on request
Lodge closure	Open year-round

DINING

Food / Dietary options	Kosher and Halaal available upon request and at an additional cost Please advise the lodge in advance with at least four weeks' notice
Private butler service	Yes
Plated service	Yes
Private dining	Yes

PAYMENT TYPES

Credit cards accepted	Visa, Diners, Amex and Mastercard
Currency	All major currencies accepted

FACILITIES

Power	220v AC (50 Hz) plug points in rooms
Internet access	Yes, Wi-Fi in guest suites and guest area
Wine store or cellar	Wine store
Boma	Yes
Bar	Yes
Interactive kitchen	No
Swimming pool	Private plunge pools in each suites, plus a lodge swimming pool
Wellness offering	Yes, Healing Earth wellness treatments offered in-room or in the lodge's massage sala
Fitness	Yes, well-equipped gym
Conference facilities	No
Weddings & blessings	Yes
Wheelchair access	Yes, with assistance Golf carts are available for guests with mobility issues
Complimentary laundry service	Yes
&Beyond Safari Shop	Yes

OTHER

Vehicle type	10-seater open safari vehicle Max. six guests per vehicle
Private 4x4 safari vehicle	Yes, subject to availability and at an additional cost

DISCOVER THE SABI SAND NATURE RESERVE
&Beyond Tengile River Lodge

Inclusions

RATE INCLUDES

Accommodation	✓
Three meals daily	✓
Soft drinks, house wines, local brand spirits and beers, teas and coffees and refreshments on game drives	✓
Laundry	✓
Safari activities	✓
One-hour nature walks accompanied by experienced armed trackers – subject to availability	✓
Emergency medical evacuation insurance	✓
VAT	✓
Transfers to-and-from Skukuza Airport	✓
A complimentary pair of SWAROVSKI OPTIK binoculars per room for use during your stay	✓

RATE EXCLUDES

Administration fee	×
Telephone calls	×
Safari Shop purchases	×
Gratuities	×
All items of a personal nature	×
Champagne, cognacs, fine wines, premium brand spirits and cigars	×
Government bed levy	×
Conservancy or park fees	×
Landing fees	×

NOTE: Unmanned Aerial Vehicles: Please be advised that the use of unmanned aerial vehicles (drones) are prohibited in the conservation areas we manage, until such time as their impact on wildlife and anti-poaching initiatives can be assessed. This rule will apply throughout Africa, as our partners in various countries and regions have adopted a similar stance.



8BEYOND TENGILE RIVER LODGE

Tengile suites

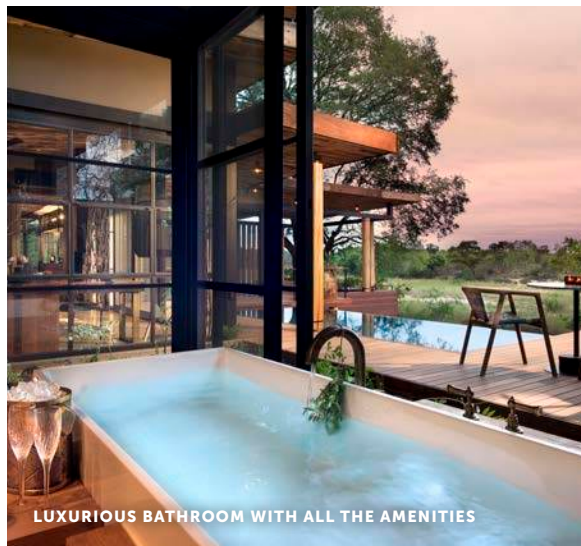


&BEYOND SOUTH AFRICA

DISCOVER THE SABI SAND NATURE RESERVE
&Beyond Tengile River Lodge Accommodation

An indescribable haven

&Beyond Tengile River Lodge boasts
nine enormous stilted Suites, each with
180-degree uninterrupted views of the
Sand River.



LUXURIOUS BATHROOM WITH ALL THE AMENITIES



CONTEMPORARY LOUNGE WITH PERSONAL BAR

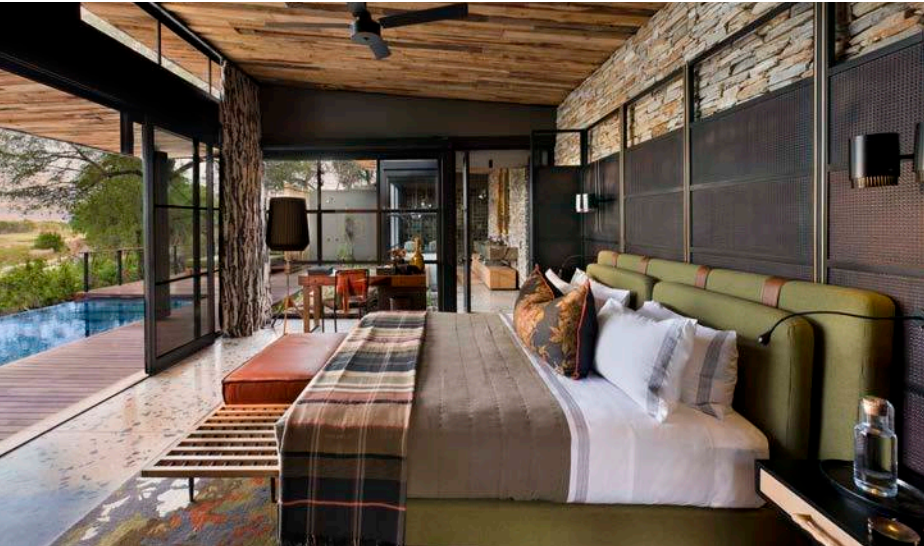


SPACIOUS DECK WITH PRIVATE POOL

DISCOVER THE SABI SAND NATURE RESERVE
&Beyond Tengile River Lodge Accommodation

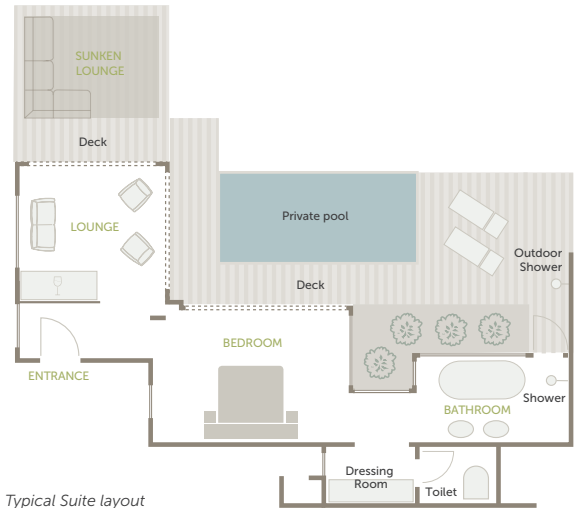
SUITE

9 Suites / Max. 2 guests per Suite



IMMENSE LUXURY
This magnificent lodge features nine enormous, air conditioned, secluded suites, each with panoramic river views. In addition to a master bedroom, bathroom and outdoor shower, there is a lounge, dining area, fully-stocked bar, coffee station and outdoor area that is guaranteed to take your breath away. A private plunge pool on your spacious deck comes complete with sunken outdoor lounge looking out onto the famed Sand River.

ROOM FACILITIES	
Suite sizes	204 m ² (669 ft ²)
Private veranda	Yes
Private plunge pool	Yes
Personal bar	Yes
Personal coffee station	Yes
Air conditioning / heating	Yes
Overhead fans	Yes
Mosquito nets	No, sealed room
Bath	Yes
Shower	Indoor and outdoor shower
Seperate WC	Yes
Telephone	Yes
Hairdryer	Yes
Internet access	Yes
In-room safe	Yes
Plug type	220V AC Plug Type C, D, M, N Adapters available
Triple bed option	No
Twin bed option	Yes, however, beds are within the same bedframe
Double bed option	Yes
Wheelchair accessibility	Yes, with assistance



Typical Suite layout

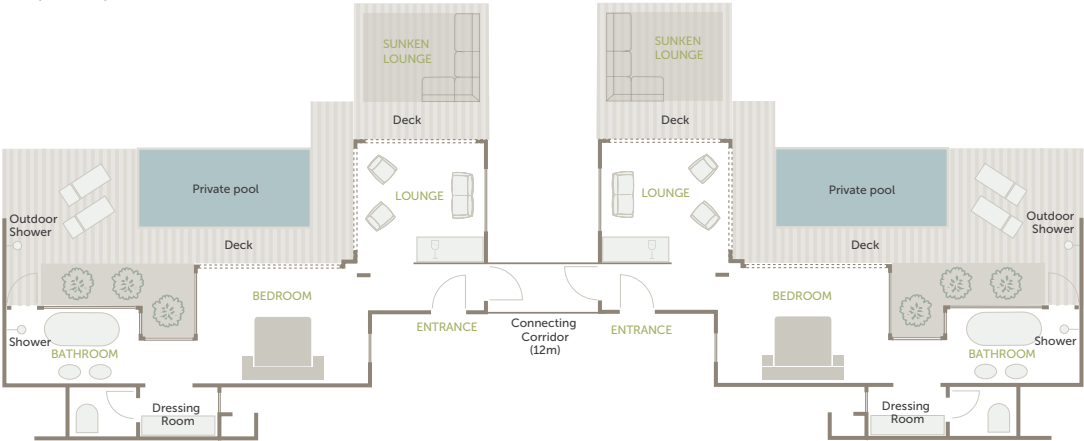
DISCOVER THE SABI SAND NATURE RESERVE
Beyond Tengile River Lodge Accommodation

FAMILY SUITE

1 interconnected Family Suite / Max. 2 adults and 2 children



Family Suite layout



LINKED IN EXCLUSIVITY
For families or small groups, two of the lodge's regular suites are joined by a 12 m (39 ft) covered walkway to create a Family Suite. Each suite has its own master bedroom that can be made into a double or a twin bed. The same bathroom and outdoor area as all the suites graces the two family rooms.

ROOM FACILITIES

Suite sizes	204 m ² (669 ft ²) each – two suites
Private veranda	Yes
Private plunge pool	Yes
Personal bar	Yes
Personal coffee station	Yes
Air conditioning / heating	Yes
Overhead fans	Yes
Mosquito nets	No, sealed room
Bath	Yes
Shower	Indoor and outdoor shower
Seperate WC	Yes
Telephone	Yes
Hairdryer	Yes
Internet access	Yes
In-room safe	Yes
Plug type	220V AC Plug Type C, D, M, N Adapters available
Triple bed option	No
Twin bed option	Yes, however, beds are within the same bedframe
Double bed option	Yes
Wheelchair accessibility	Yes, with assistance

A woman in a dark robe is hanging a towel on one of several vertical wooden posts that serve as a clothesline. She is barefoot and stands on a dark wooden deck. To her right is an outdoor shower with a large, cylindrical wooden water spout and a showerhead. A wire birdcage hangs from a post above the shower. In the background, there is a lounge area with green cushions and a large tree. The scene is set in a natural, wooded environment with a body of water visible in the distance.

DISCOVER SABI SAND NATURE RESERVE

Lodge comparison

A quick reference comparing Kirkman's Kamp
and Tengile River Lodge - each with their own
unique personality.

DISCOVER THE SABI SAND NATURE RESERVE
Lodge Comparison

Lodge comparison

OVERVIEW	KIRKMAN'S KAMP	TENGILE RIVER LODGE
Lodge experience	A historic family-friendly lodge with an intimate feel	An exclusive and luxurious, high-end lodge with a peaceful feel
Maximum number of guests	25	18
Number of rooms	12	9
Family accommodation	Children of all ages are welcome 1 triple cottage (for children 16-years and younger only) 1 interconnected Family Cottage (max. 2 adults and 2 children)	1 interconnected Family Suite with covered passageway (max. 2 adults and 2 children – 12-years and older only)
WILDchild programme	Yes	No
Room types	12 Cottages, including 1 Family Cottage	Nine Suites, including 1 Family Suite
Distance between rooms	3 to 6 m (9.8 to 19.6 ft) between cottages Each cottage is adjoined to one other cottage	10 to 30 m (32 to 98 ft) between suites The Family Suite is separated by 12 m (39 ft)
FACILITIES		
Power	220v AC	220v AC
Internet access	Yes, Wi-Fi in suites and guest area	Yes, Wi-Fi in suites and guest area
Wine store or cellar	Wine store	Wine store
Boma	Yes	Yes
Interactive kitchen	No	Yes
Lodge swimming pool	Yes	Yes
Private pools	No	Yes
Wellness offering	Healing earth treatments offered in-room and in the lodge spa	Healing Earth treatments offered in-room or in the massage sala
Fitness options	Gym-in-a-basket available	Well-equipped gym
Conference facilities	No	No
Weddings and blessings	Yes	Yes
Wheelchair accessibility	Yes, with assistance, but not recommended	Yes, with assistance - golf carts are available for guests with mobility issues
Complimentary laundry service	Yes	Yes
BEYOND Safari Shop	Yes	Yes

DISCOVER THE SABI SAND NATURE RESERVE
Lodge Comparison

Accommodation comparison

	KIRKMAN'S KAMP	TENGILE RIVER LODGE
Room size (square meters)	Approx. 34 m² (111.5 ft²)	Approx. 34 m² (111.5 ft²)
Room configuration	Each Cottage consists of one bedroom with an ensuite bathroom and private veranda	Each Suite consists of one bedroom with ensuite bathroom (indoor and outdoor shower), personal indoor lounge, bar, private pool, and sunken outdoor lounge
Private veranda	Yes	Yes
Private plunge pool	No	Yes
Personal bar	Yes	Yes
Personal coffee station	Yes	Yes
Air conditioning / heating	Yes	Yes
Overhead fans	Yes	Yes
Mosquito nets	No, sealed room	No, sealed room
Bath	No	Yes
Shower	Yes, indoor shower only	Indoor and outdoor shower
Seperate WC	Yes	Yes
Telephone	Yes	Yes
Hairdryer	Yes	Yes
Internet access	Yes	Yes
In-room safe	Yes	Yes
Plug type	220V AC Plug Type C, D, M, N Adapters available	220V AC Plug Type C, D, M, N Adapters available
Triple bed option	1 triple cottage (for children 16-years and younger only)	No
Twin bed option	Yes	Yes, however, beds are within the same bedframe
Double bed option	Yes	Yes
Family suite	Yes	Yes



andBEYOND



@andbeyondtravel
#seewhatliesbeyond

andBeyond.com

GENERAL ENQUIRIES
+27 11 809 4300
contactus@andBeyond.com

REGIONAL ENQUIRIES
africa.reservations@andBeyond.com
southasia.reservations@andBeyond.com
southamerica.reservations@andBeyond.com

PRESS ENQUIRIES
media@andBeyond.com

TRAVEL TRADE
enquiry@andBeyond.com