



ACTIVITIES

Etosha National Park Experiences

Etosha National Park is a 22 750 km²wildlife sanctuary in Namibia and the name means 'Place of Dry Water'.

This name refers to a flat calcrete pan of about 5000km². The Pan provides an amazing, silver-white backdrop of shimmering images to an area of semi-arid savannah grassland and thorn trees. You will find water in the pan only after very good rains, and sometimes only a few days each year, but this is enough to let the blue-green algae grows which lures thousands of flamingos! There are close to 114 species of mammal in Etosha – this includes black-faced impala, the threatened black and white Rhino, Lion, Leopard, Elephants, Giraffe and many more!

Join us on one of our Game Drives and experience the wonder that the Etosha National Park has to offer...

Half Day Etosha National Park Experience

Morning Half Day Excursion

We depart after an early Breakfast, in time for the Gate Opening at the Etosha National Park, and we normally return to Toshari Lodge in time for Lunch

10-Seater Open-Sided Game Viewer:

N\$2660 per person

N\$1064 per person for 4 pax and more

N\$5320 for the vehicle: Exclusive Use

24-Seater Open-Sided Game Viewing Truck:

N\$918 per person

N\$140 per person for a Picnic Lunch including Soft Drinks





Half Day Etosha National Park Experience

Afternoon Half Day Excursion

We depart after lunch from Toshari Lodge and return by Sunset, just in time for our Scrumptious Dinner.

10-Seater Open-Sided Game Viewer:

N\$2660 per person

N\$1064 per person for 4 pax and more

N\$5320 for the vehicle: Exclusive Use

24-Seater Open-Sided Game Viewing Truck:

N\$918 per person





Full Day Etosha National Park Experience

For our Full Day Game Drive, we depart after an early Breakfast, in time for the Gate Opening at The Etosha National Park, and we return around Sunset, after a full day to Toshari Lodge, just in time for our Scrumptious Dinner.

10-Seater Open-Sided Game Viewer:

N\$3220 per person

N\$1288 per person for 4 pax and more

N\$6440 for the vehicle: Exclusive Use

24-Seater Open-Sided Game Viewing Truck:

N\$1042 per person

N\$140 per person for a Picnic Lunch including Soft Drinks





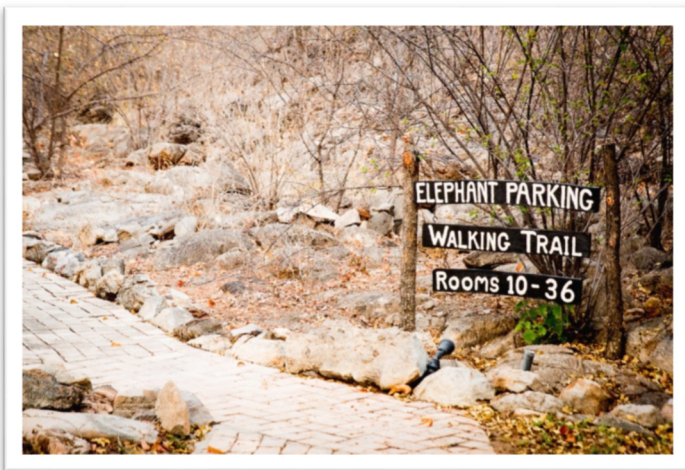
Toshari Walking-Nature Trails

Our well-developed nature trails are located on our property and are regularly maintained and clearly signposted.

The Trails takes you on a relaxing stroll between Dolomite rocks and a forest of Mopane and White Seringa Trees.

You are welcome to enjoy this at your own pace and at your own time.

Free of Charge





Omapaha Traditional Himba Village

Join us on a guided visit to the Omapaha Himba Village and discover the customs and lifestyle of the Ovahimba Tribe. This Village was established to conserve the Himba Culture and Traditions.

Omapaha is not a show village, nor a human zoo. It is a cultural exchange where people can learn about these amazing nomadic people before their heritage become lost forever due to the fact that the western world is evolving at the speed of light...

The people at the village currently take care of 15 orphaned children.

The funds generated by these tours are being used to take care of them and the families in the village responsible for taking care of the orphans.

N\$450 per adult (minimum of 4 pax)

N\$220 per child (5-12 years of age, younger than 4 years Free of charge)

Duration: 2 – 2 ½ hours

****Activity available from 08:00 – 12:00 or again from 16:00 – 18:00
(we will check availability with Omapaha)**





Eldorado Predator Sanctuary Visit

Several African Predators which were captured whilst endangering our neighbour's livestock, are housed at Farm Eldorado in this sanctuary.

They live in large camps and all the animals in the enclosures are kept as close to their natural habitat as possible.

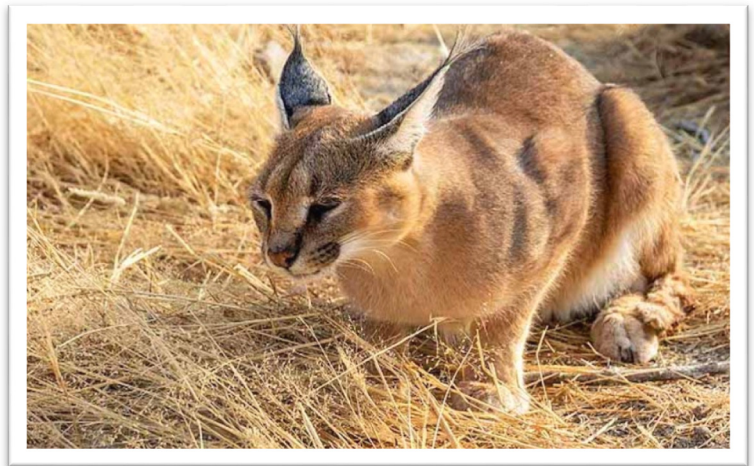
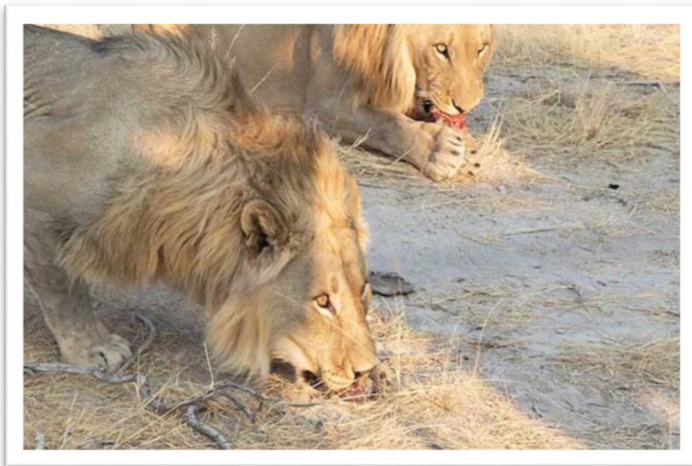
A veterinarian visits them regularly to weigh them and look at the condition of their skin, hair and teeth, and the money received for the Predator Sanctuary tours are used to feed and care for these animals.

N\$550 per adult (minimum of 4 pax)

N\$275 per child (5-12 years of age, younger than 4 years Free of charge)

Duration: 2 hours

Activity available from 08:00 – 17:00
(we will check availability with Eldorado)



ACTIVITY TERMS AND CONDITIONS

- Game Drives to be booked at least 1 day prior
- Game drives to the Etosha National Park takes place in our open-sided Safari Vehicles
- All drives include the Entrance Fee into the Etosha National Park, Still or Sparkling Mineral Water and Light Snacks
- Our Game Drive Vehicles seats 8 pax per vehicle and if less than 4 pax is booked, we charge a minimum fee per car and not per person.
- You are welcome to add a Picnic Lunch with Drinks to your Half or Full Day Activity – our guides will stop at an allowed Lunch Spot in the Etosha National Park for you to enjoy.

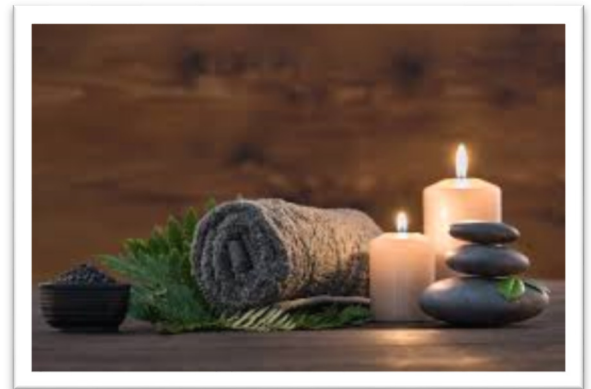


SPA TREATMENTS

Immerse yourself in expert Spa Treatments with mind and body benefits, using Natural, Namibian Products.

We offer wonderful, professional massages in beautiful surroundings – submerged in nature right here on our property!

Our Spa is open Daily from 07:00 until 21:00. Please book in advance at Reception.



30 Minute Treatments

Reflexology: Relaxing pressure-point massage	N\$530
Hot Stone: Back and Neck massage using the age-old Hot Stone Technique	N\$530
Swedish Massage: Relaxing tension relief through Back and Neck Massage	N\$530
Deep Tissue Massage: Back and Neck massage	N\$530
Foot Massage: Relaxing 30-minute Foot Massage	N\$530
Scrub: Back and Neck Scrub OR Full Body Scrub	N\$530

60 Minute Treatments

Hot Stone: Full body massage using the age-old Hot Stone Technique	N\$860
Swedish Massage: Relaxing tension relief through Back and Neck Massage	N\$860
Deep Tissue Massage: Full body Deep Tissue Massage	N\$860