

## MAIN JOCK

### A SECLUDED PARADISE

Main Jock Lodge ensures guests will experience a stay of seclusion and in pure harmony with the natural surroundings. Twelve secluded thatched suites all with a spectacular view of the riverbed offer total privacy and lead on to a private deck with plunge pool and a Sala - an outdoor day bed - offering exclusive sleep-out options. Main Jock Lodge will help your soul capture the essence of finding your inner peace amidst the calls of the wild.

#### LODGE FACILITIES

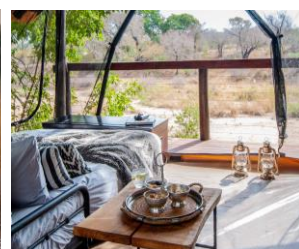
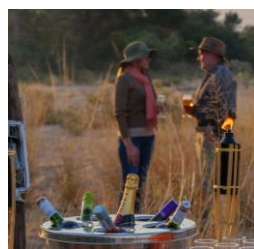
- Relaxation Retreat with sauna and exercise room
- Gift boutique
- Indoor and outdoor dining facilities
- Library with TV, DVD player and complimentary wi-fi
- Heated pool with deck

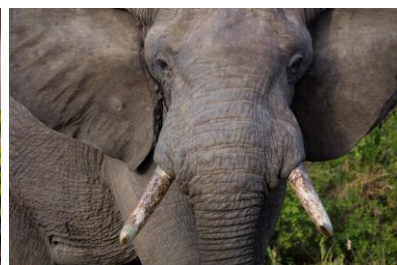
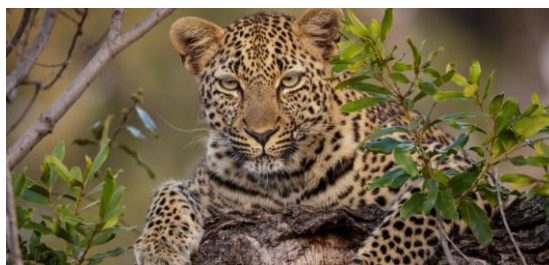
#### ACTIVITIES

- Game drives
- Guided wilderness walks
- Birdwatching
- Unique golfing opportunities at the esteemed Leopard Creek Golf Club

#### ROOM FEATURES

- Private plunge pool
- Sala (outdoor day bed) overlooking the river
- En-suite bathroom, with outdoor shower
- Air conditioning
- Private minibar
- Electronic safe
- Tea and coffee making facilities
- International dial telephone
- Hairdryer
- Ceiling fan





## AT A GLANCE

### LEDGENDARY EXPERIENCES IN THE KRUGER

Jock Safari Lodge is nestled where the Mitomeni and Biyamiti rivers flow as one, situated in the south-western corner of the Kruger National Park. The lodge offers 6,000 hectares of exclusive traversing rights in an area of the park which is celebrated for its Big Five game viewing.

### CELEBRATE THE ROMANCE AND ELEGANCE OF A BYGONE ERA

- 6 000 hectares of exclusive traversing in the first private concession set in over 2 million hectares of Kruger National Park
- Situated on the confluence of two rivers (Biyamiti and Mitomeni Rivers) Jock offers 25km of dry riverbed traversing.
- Walking safaris to some of the oldest Bushmen rock art in Africa (approximately 3 000 years old)
- Top environmental concession in Kruger National Park.

### GUEST ACTIVITIES

#### Game Drives

Interactive game drives, lasting up to 4 hours and which are guided by your game ranger in an open game viewing vehicle, take place in the tranquil moods of sunrise and sunset. You are encouraged to share any particular interests with your ranger who will try and incorporate these into your game drive.

On game drives, guests will enjoy a sundowner drink at sunset and coffee/tea at sunrise. Children from 0 up to, and including 5 years, are only permitted at Fitzpatrick's at Jock

#### Guided Wilderness Walks

Qualified walking guides provide the opportunity for guests to experience the excitement of approaching species on foot. No persons under the age of 12 years are permitted to join the game walks. Kindly ensure to request this activity at the time of booking accommodation as nature walks are subject to the availability of qualified guides.

#### Relaxation Retreats

Various treatments can be enjoyed at our Relaxation Retreat which is situated at the main lodge (Main Jock). Treatments can be booked prior to arrival with our Reservations team. Kindly visit our website for the latest list of treatments available.

#### Golf

Exclusive access to Leopard Creek Golf Club is available at an additional cost and can be booked with accommodation. Complimentary return transfers are included.







# PROGRAMME OF EVENTS

The following times are only an indication and approximate as these may vary according to seasons and weather conditions. Both lodges - Main Jock and Fitzpatrick's - operate independently, each with a full staff compliment, chef and host. Dinner alternates between the indoor and outdoor facilities, weather permitting.

We suggest that guests arrive in time for lunch on their day of arrival so as not to miss out on any game drives during their stay. Please check with reception to reconfirm your transfers/flight departure times. Due to the rules and regulations of the Kruger National Park, no persons are allowed on any KNP roads during the period of gates being closed. Therefore guests must be at their destination by the time the gates close.

Jock Safari Lodge is approximately 45 minutes from the Malelane gate and therefore we recommend that flights to/from Kruger Mpumalanga International Airport (KMIA/MQP) are booked to:

- arrive before 14h30 on day of arrival
- depart after 10h00 on day of departure

**Times vary slightly from season to season**

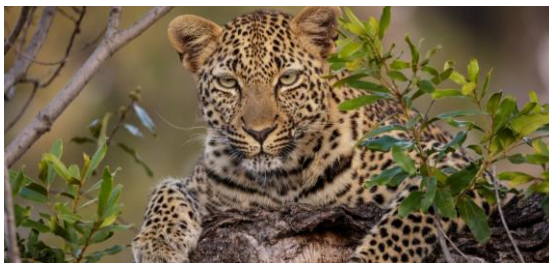
## PROGRAMME

TIME	ACTIVITY
04H30/05H30	Wake up call
05H00/06H00	Early morning refreshments served
05H15/06H15	Depart for morning game drive
09H00	A continental breakfast buffet and (plated) hot breakfast is served
11H00	Requested check-out time
12H00	Lunch is served until 14h30
13H00/14H00	Recommended arrival time
15H00/15H30	Afternoon tea
15H30/16H00	Depart for afternoon game drive
20H00	Pre-dinner drinks
20H30	Varying dinner options served on alternate nights

## KRUGER NATIONAL PARK GATE TIMES

MONTH	OPEN	CLOSE
Jan	05H30	18H30
Feb	05H30	18H30
Mar	05H30	18h00
Apr	06H00	18H00
May	06H00	17H30
Jun	06H00	17H30
Jul	06H00	17H30
Aug	06H00	18H00
Sep	06H00	18H00
Oct	05H30	18H00
Nov	05H30	18H30
Dec	05H30	18H30





## DIRECTIONS

### FROM JOHANNESBURG

Take the N12 national road to Witbank which becomes the N4 national road. Follow the N4 through Nelspruit and Malelane. About 2 km outside Malelane, take the turn-off to enter the Kruger National Park at the Malelane Gate where an entrance fee is payable. Please have your confirmation or voucher with you. Once you enter Malelane gate, drive straight on the H3 road, for about 29km and turn left at the “Jock Safari Lodge” sign. Travel along a 3 km dirt road until you reach the lodge. Distance from Johannesburg:  $\pm$  458 km.

**NOTE:** The camp is situated half way between Skukuza and Malelane gates, approximately 29 km (45 minutes) in both directions with only 3 km of dirt road. Due to the rules and regulations of the Kruger National Park, nobody is allowed on any Kruger National Park roads during the period of gates being closed. Therefore guests must be at their destination by the time the gates close.

**We recommend that flights to/from Kruger Mpumalanga Airport (KMIA/MQP) and Skukuza are booked to:**

- arrive before 14h30 on day of arrival
- depart after 10h00 on day of departure

### KRUGER NATIONAL PARK GATE TIMES

MONTH	OPEN	CLOSE
Jan	05H30	18H30
Feb	05H30	18H30
Mar	05H30	18h00
Apr	06H00	18H00
May	06H00	17H30
Jun	06H00	17H30
Jul	06H00	17H30
Aug	06H00	18H00
Sep	06H00	18H00
Oct	05H30	18H00
Nov	05H30	18H30
Dec	05H30	18H30

### CO-ORDINATES

#### MAIN JOCK

S25° 13' 059" E 031° 34' 007"

#### FITZPATRICKS AT JOCK

S25° 13' 490" E 031° 34' 007"

### CONTACT

+27 (0)13 735 5200

