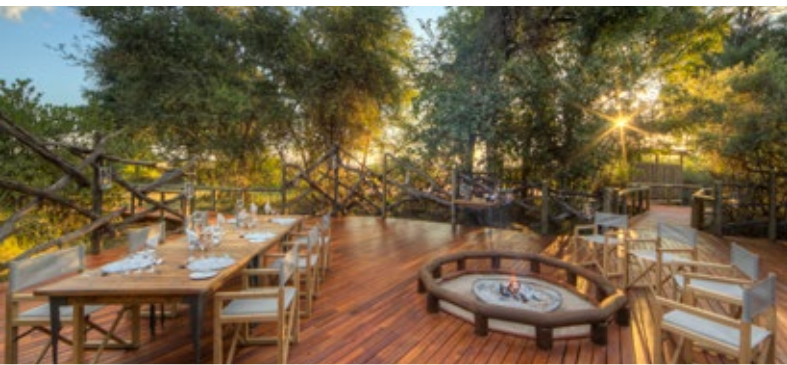




CAMP MOREMI

Moremi Game Reserve, Okavango Delta



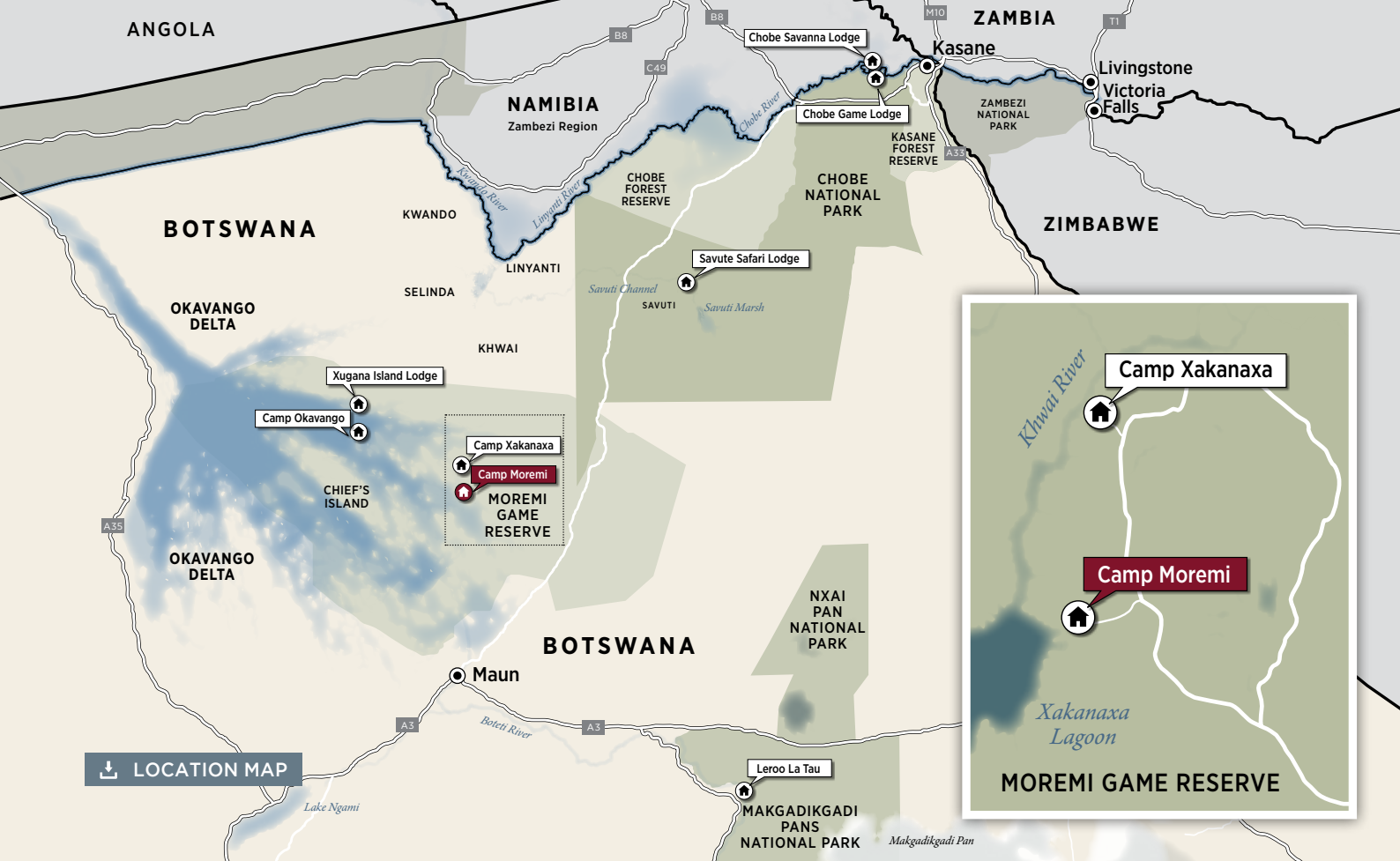
Empowering Botswana Through Tourism

CAMP OKAVANGO | XUGANA ISLAND LODGE | CAMP MOREMI | CAMP XAKANAXA
CHOBE GAME LODGE | SAVUTE SAFARI LODGE | CHOBE SAVANNA LODGE | LEROO LA TAU



www.desertdelta.com

AUGUST 2020



For the classic African safari experience, look no further than Camp Moremi in Botswana's world-renowned Moremi Game Reserve. Camp Moremi is situated on the edge of the Xakanaxa Lagoon in an area well known for its spectacular game-viewing opportunities.





THE CAMP

FACILITIES

| | |
|----------------------|-------------------------------------------------------------------------------------------------------------------------------------------------------------------------------------------------------------------------------------|
| ROOMS | 11 Luxury Tents & 1 Family Tent (2 en-suite bedrooms) accommodating a maximum of 24 guests. |
| PILOT/GUIDE | 1 x Pilot/Guide Tent (not same standard as guest rooms). |
| RATES | Fully inclusive of all meals, scheduled safari activities, local drinks (including alcoholic drinks, excluding premium brands) and park entrance fees |
| DINING | Various indoor and outdoor dining locations. |
| CAMP FIRE | Open air fire deck in front of camp connected to the main area via a raised boardwalk. |
| SWIMMING POOL | On a separate deck with easy access from the main area. |
| BAR | Fully stocked self service bar. |
| CURIO SHOP | Accepts cash and credit card payments. |
| LAUNDRY | Daily, inclusive laundry service available. |
| WATER | Reverse osmosis water treatment plant supplies drinking water (bottled water on request). |
| ELECTRICITY | Operates on AC 220V generator power during the day and evening. The generator is switched off at night and inverted 12-volt DC lighting provides room and bathroom illumination overnight. 220V AC plug's available in guest rooms. |
| INTERNET | Guest laptop available with basic internet connection in the library - there is no Wi-Fi available. |
| TELEPHONE | No telephone communication available. The lodge has a satellite phone and radio for emergencies. |
| CHILDREN | Children from 6 years and older. See Desert & Delta Safaris child policy for more information. |

 [CAMP IMAGES](#)





ACCOMMODATION

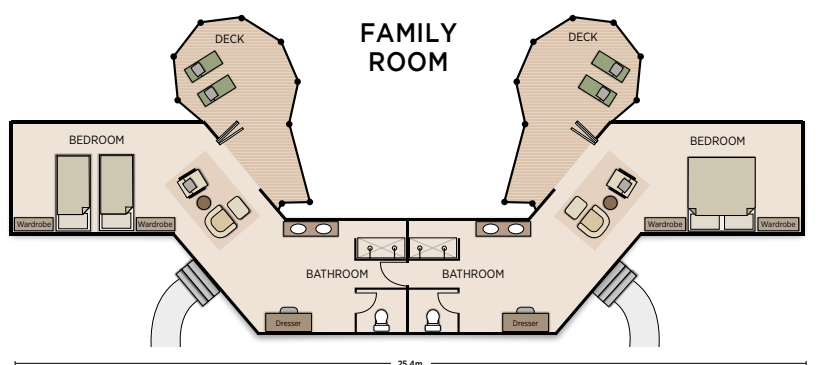
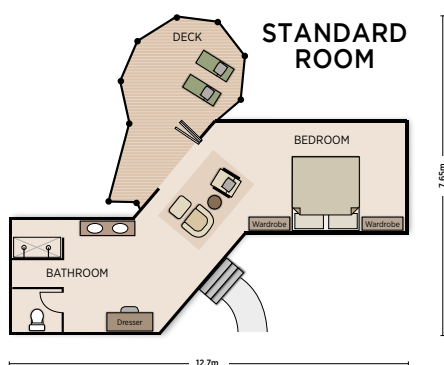
Guests will enjoy the luxurious seclusion of classic-styled safari tents, each one set on a raised teak deck, featuring an en-suite bathroom. Accommodating a maximum of 24 guests, Camp Moremi ensures exclusivity and privacy in a tranquil environment.



| ROOM FACILITIES | |
|------------------------------------|--------------------------------------------------------------------------------|
| RAISED DECKS | Each tent is on a raised wooden platform. |
| PRIVATE VIEWING DECK | Enjoy the views from the comfort of your private room deck. |
| EN-SUITE BATHROOM | En-suite showers, hand basin and toilet facilities. |
| FANS | Fans are available in all rooms - there is no air-conditioning in the rooms. |
| POWER | 220V multi adaptor plugs for charging photographic equipment. |
| SAFE | A small pass-code protected safe for storing valuables. |
| FLASHLIGHT | For use in the rooms at night. |
| UMBRELLA | In case of rain. |
| AIR HORN | For use in case of an emergency. |
| HAIRDRYER | A small hairdryer is available in each room. |
| BATHROOM AMENITIES | A range of bathroom amenities including bio-degradable soaps, shower gels etc. |
| TEA & COFFEE FACILITIES | A small kettle with tea and coffee available. |

CAMP IMAGES




PLANS





ACTIVITIES

Camp Moremi offers a range of activities focused on exploring the uniqueness of the Moremi Game Reserve.

| | | |
|----------------------------------------------------------------------------------|-------------------------------|-------------------------------------------------------------------------------------------------------------------------------------------------------------------------------------------------------------------------------------------------------------|
|  | GAME DRIVES | Morning and afternoon game drives to explore the many different ecosystems that the Moremi Game Reserve has to offer. |
|  | MOTORISED BOAT SAFARIS | Explore the Xakanaxa Lagoon and its surrounding channels by boat for a chance to enjoy the picturesque waters of the Okavango Delta, in hard-bottom aluminum boats. The boats are equipped with comfortable seats, a foldaway canvas roof and life jackets. |
|  | BIRD WATCHING | The majestic Fish Eagle and vivid Malachite Kingfisher are frequently seen and even the rare Pel's Fishing Owl makes an occasional appearance, to the delight of guides and guests alike. |

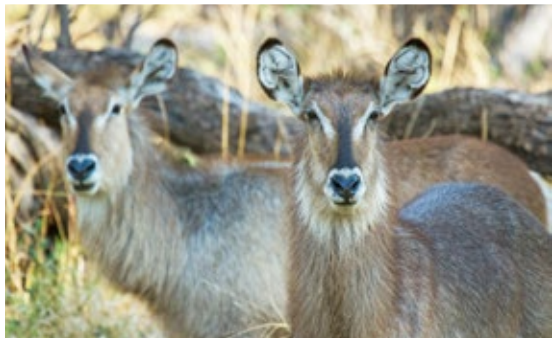
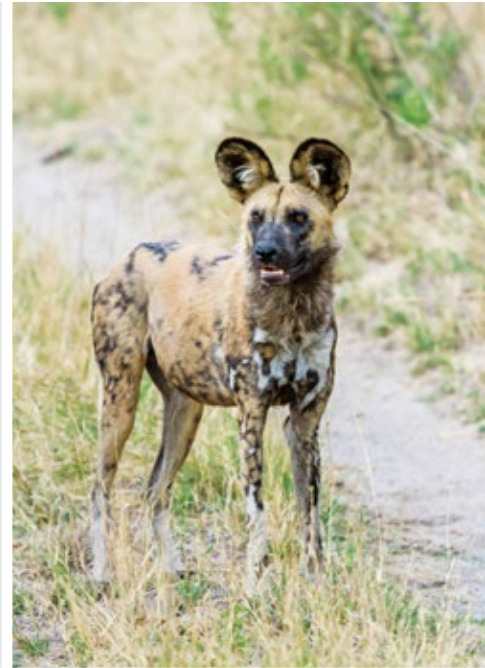
 EXPERIENCE IMAGES



TYPICAL DAY ON SAFARI

Please note the below suggested daily program is flexible based on the guests interests, travel times and availability of activities.

| WINTER TIMES | SUMMER TIMES | ACTIVITY |
|--------------|--------------|----------------------------------------------------------|
| 05:30 | 05:00 | Early morning wake-up call. |
| 06:00 | 05:30 | Light continental breakfast served in the dining area. |
| 06:30 | 06:00 | Leave for morning activity, (approximately 3 - 4 hours). |
| 11:30 | 11:00 | Brunch is served at the dining area. |
| SIESTA TIME | | Relax and enjoy the lodge facilities and surroundings. |
| 15:00 | 15:30 | Afternoon tea is served on the open air patio. |
| 15:30 | 16:00 | Depart for afternoon activity (approximately 3 hours). |
| 18:30 | 19:00 | Arrive back at the lodge. |
| 19:30 | 20:00 | Dinner is served at the dining area. |



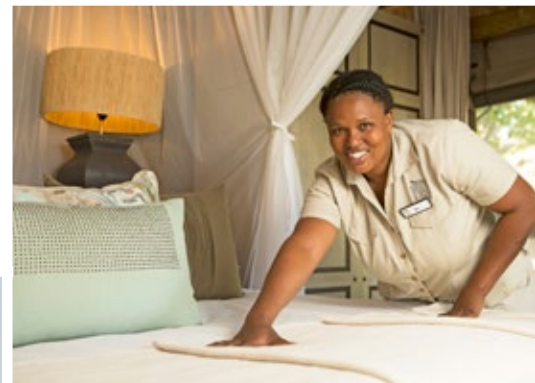


ACCESS TO CAMP MOREMI

Camp Moremi is accessed by light aircraft transfer or 140kms from Maun on sandy roads suitable for 4WD vehicles only, approximately a four hours' drive. The Xakanaxa airstrip is owned by Desert and Delta Safaris, a Chobe Holdings Company. Flights to and from Camp Moremi are scheduled based on the travellers itinerary. Once at the airstrip, there is a road transfer of approximately 25 minutes to camp.

AIRSTRIP DETAILS

| | |
|------------------------|--------------------------------------------------------------------------------------------------------|
| STRIP GPS CO-ORDINATES | S19° 11' 19.96 E023° 24' 30.48 |
| CAMP GPS CO-ORDINATES | S19° 12' 51.85 E023° 25' 56.0 |
| LENGTH | 900m |
| LICENSE | CAAB Licensed Class B airstrip accommodating aircrafts up to MAUW 5700kg's (Cessna Caravan). |
| PRIVATE CHARTERS | Prior consent from Desert & Delta Safaris is required before landing private aircraft on the airstrip. |



ESTIMATED FLIGHT TIMES Between Camps & Airports

Maun

| | | | | | | |
|----|---------------|---------------------|-----------------------------|---------------------|--------------|--------|
| 25 | Camp Okavango | | | | | |
| 30 | 5 | Xugana Island Lodge | | | | |
| 20 | 10 | 10 | Camp Moremi / Camp Xakanaxa | | | |
| 40 | 30 | 25 | 25 | Savute Safari Lodge | | |
| 30 | 45 | 45 | 40 | 50 | Leroo La Tau | |
| 70 | 60 | 60 | 55 | 30 | 65 | Kasane |

PLEASE NOTE: Drone use is strictly prohibited at Camp Moremi and inside the Moremi Game Reserve, in accordance with National Park laws of Botswana.



Empowering Botswana Through Tourism

RESERVATIONS OFFICE

TELEPHONE [+267] 680 1494
E-MAIL info@desertdelta.com

View Desert & Delta Safaris Video

MARKETING OFFICE

TELEPHONE [+267] 686 1559
E-MAIL marketing@desertdelta.com
ADDRESS Private Bag 310, Maun, Botswana

www.desertdelta.com