



LION CAMP
SOUTH LUANGWA ZAMBIA

LION CAMP
AUTHENTIC AFRICAN SAFARIS





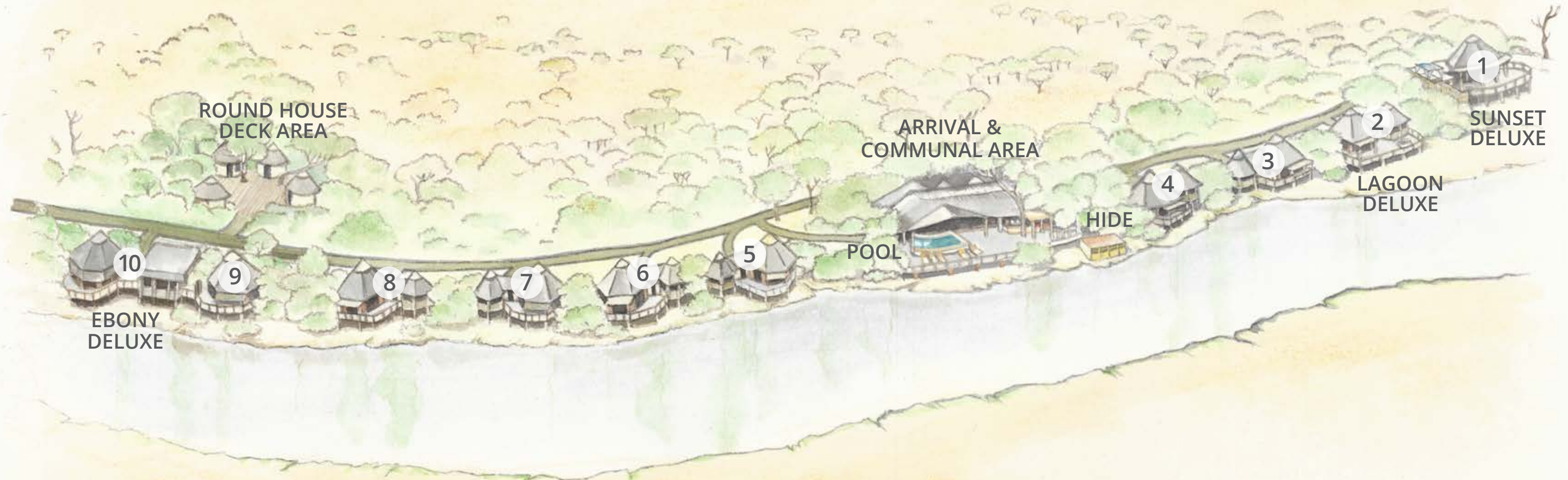
SERENE & CAPTIVATING IDEAL LOCATION

Lion Camp is a privately owned safari lodge in Zambia's South Luangwa National Park - one of the best wildlife areas to visit in Africa offering an authentic safari experience.

Lion Camp is an unfenced lodge built on stilts on the water's edge amongst woodlands creating a "tree lodge" feeling. Being raised off the ground also ensures a safer environment and guests can move freely without being escorted.



MANAGER'S HOUSE
& GUIDE ROOMS



ARRIVAL & COMMUNAL AREA:

Pool, firepit, dining, bar, seating areas, pool table & shop

ROUND HOUSE AREA:

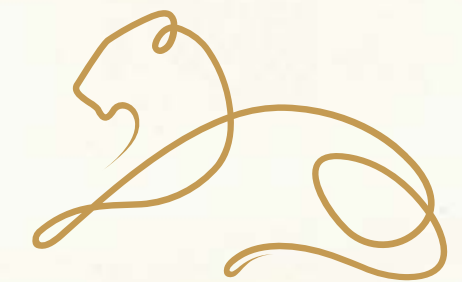
Gym, library & photographic studio

LUXURY SUITE SIZES:

70sqm including deck

DELUXE SUITE SIZES:

100sqm including deck



LION CAMP
SOUTH LUANGWA ZAMBIA





SECLUDED SANCTUARY

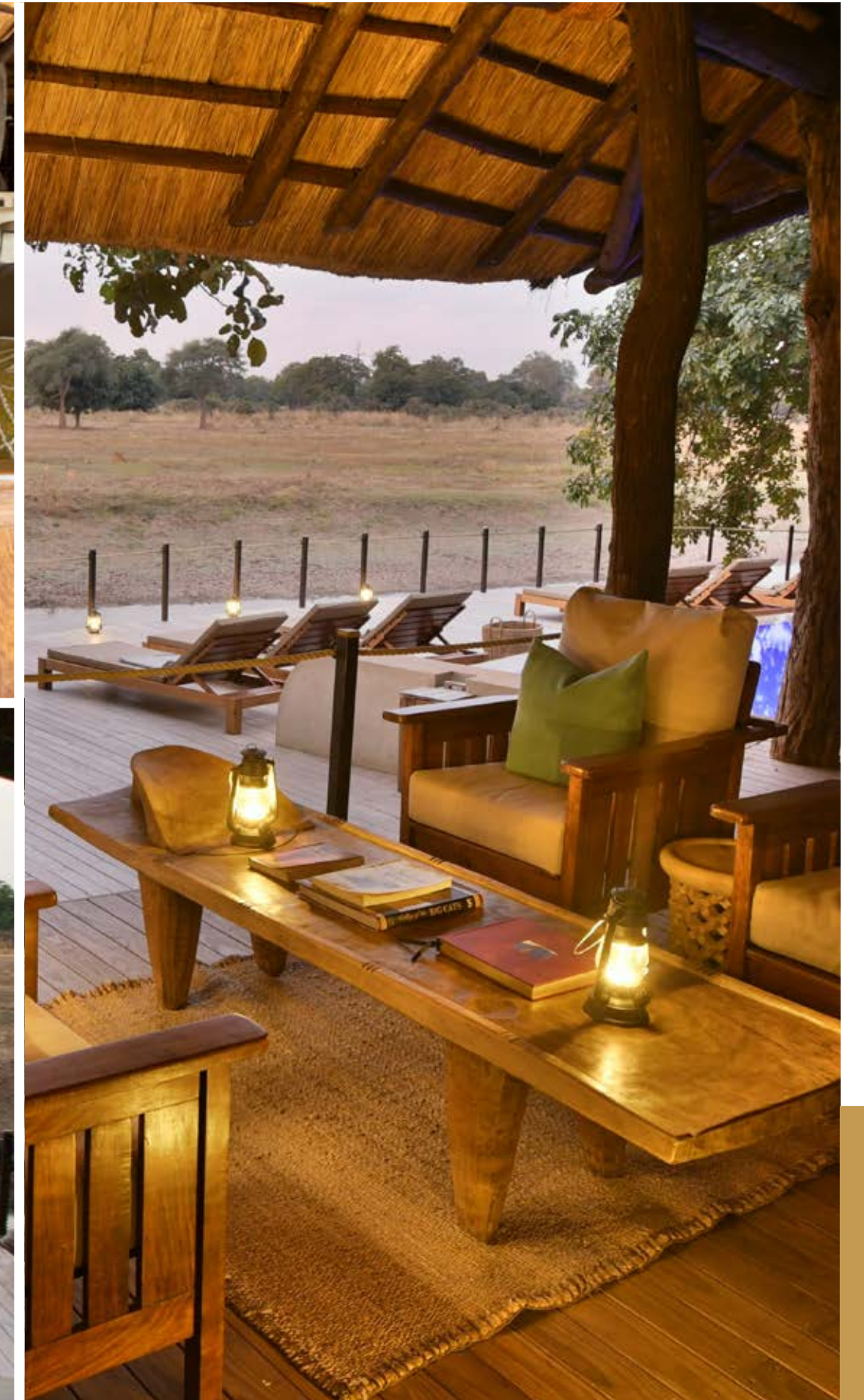
The main lodge is a large open and spacious thatched area offering private nooks, seating areas, a bar facility and a pool for those hot summer days. Off the deck of the main lodge is a hide for viewing animals at water level.

The remoteness of Lion Camp ensures less traffic during game drives and activities and better experiences. A photographer's haven offering great sightings of wildlife, cats, and birds. 5 well-qualified guides and 5 game viewers for 10 suites ensures a more private and personal experience with no more than 4 guests to a vehicle.

Luxury airconditioned vehicles are used for airport transfers (included in the rate of your stay of 3+ nights at Lion Camp).





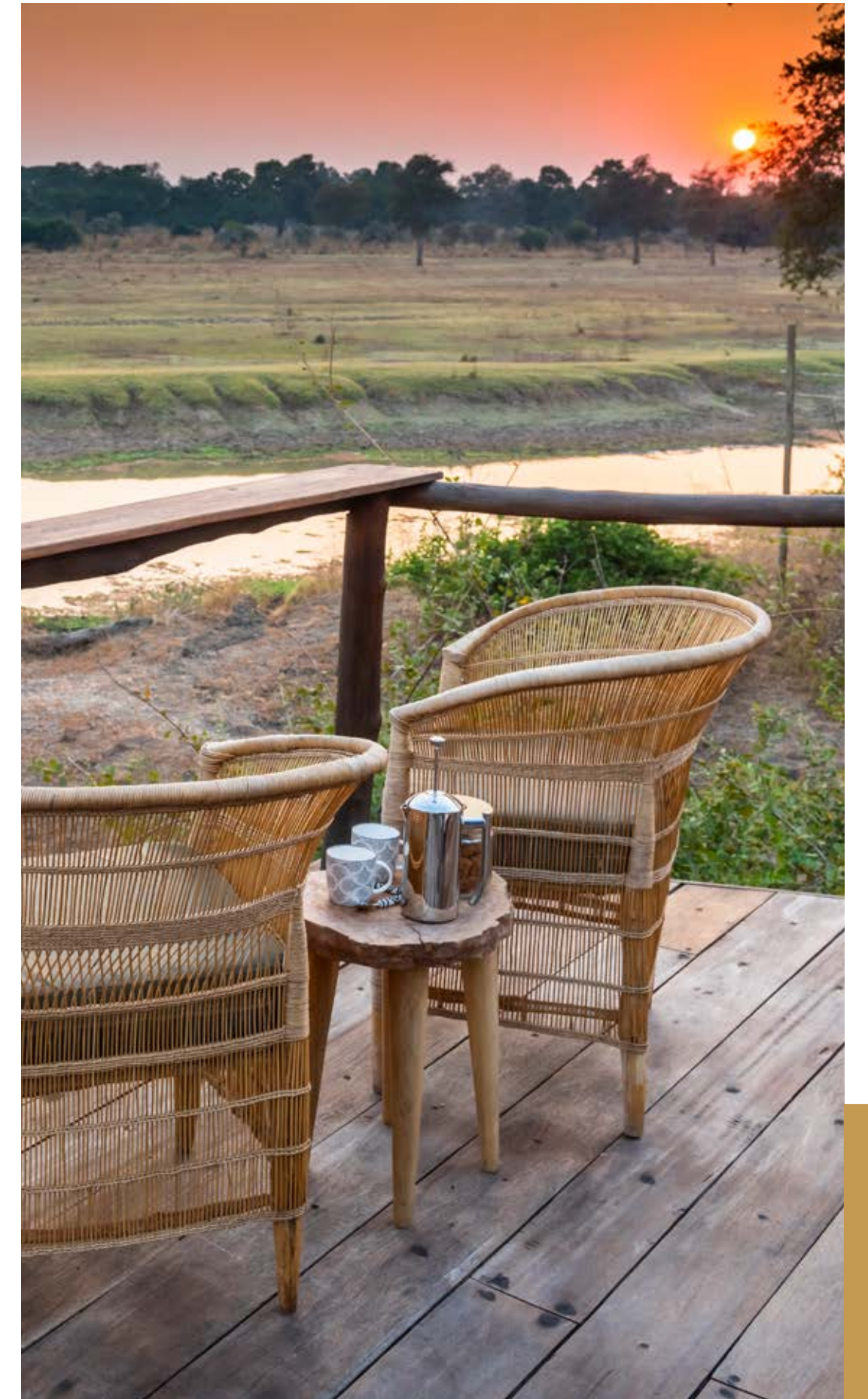




UNFORGETTABLE ACCOMMODATION

All the suites have been designed to maximize the spectacular views, affording constant viewing from the privacy of your suite deck.

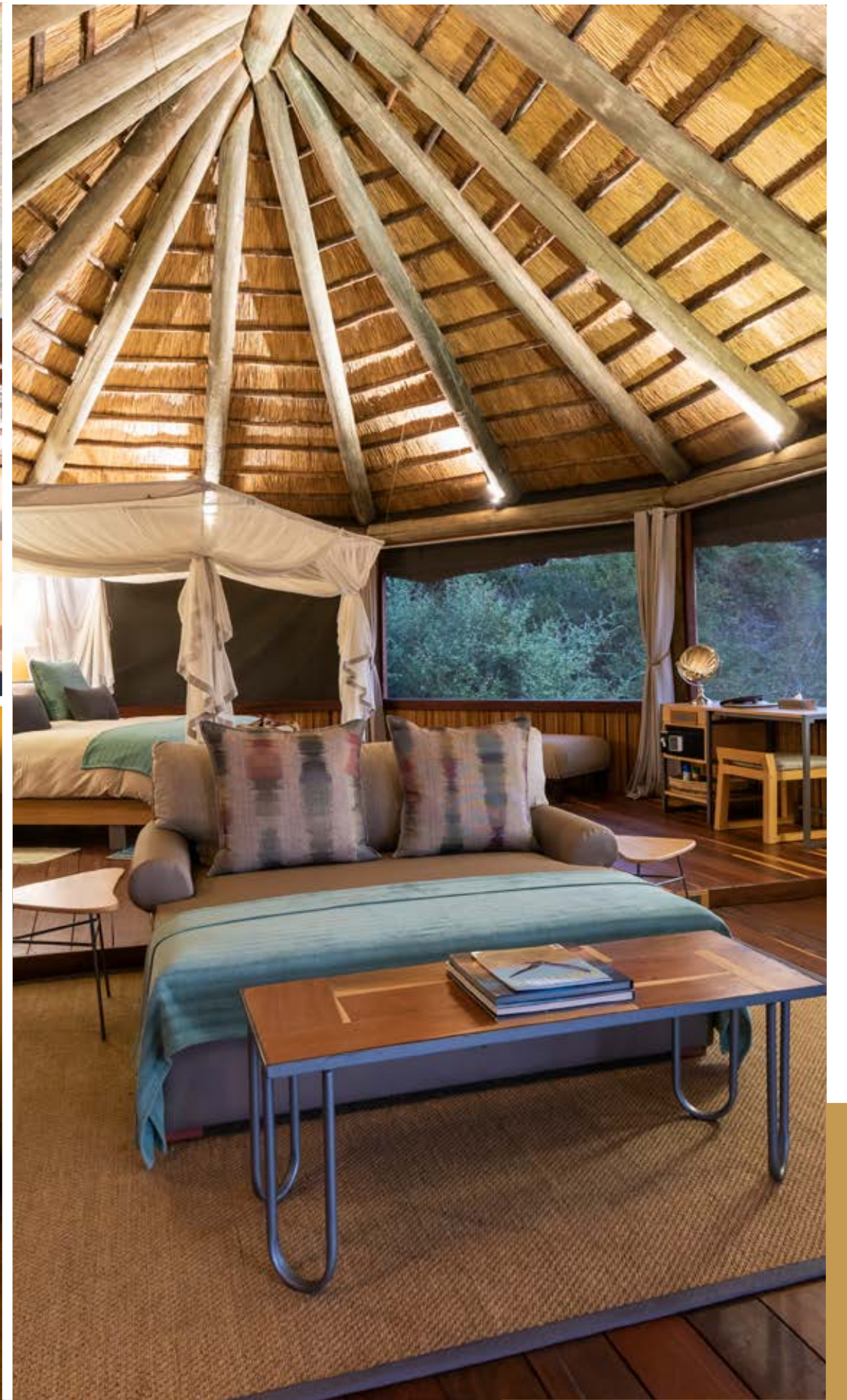
- All 10 suites offer private decks, en-suite bathrooms, USB ports, 24-hour electricity and charging facilities, Evening-breeze cooling units, hairdryers and quality amenities
- The Lagoon Deluxe Suite offers an outdoor bathtub, stocked mini bar & coffee station
- The Sunset Deluxe Suite offers an outdoor bathtub, stocked mini bar & coffee station, and a rooftop star bed
- The Ebony Deluxe Suite (suitable for families) offers an outdoor bathtub & shower, an adjacent private lounge with a coffee station, mini bar, sleeper couch for 1 child, and a viewing deck linked with the main viewing deck of the Ebony Suite.













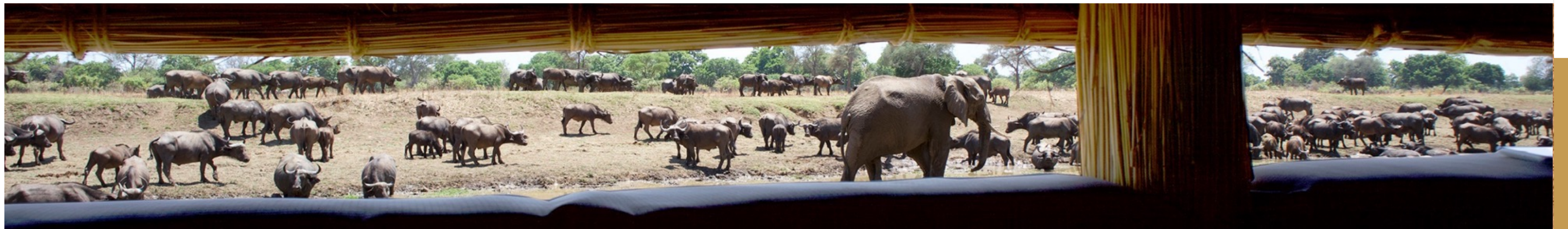
MOUTHWATERING **LOCAL CUISINE**

Our chefs delight with daily offerings of African-infused cuisine with the focus on local produce, healthy, simplistic and scrumptious meals.

Included in our rates is the well-designed wine list of South African Estate wines, soft drinks, and selected spirits.









MEMORABLE SAFARI ACTIVITIES

- Game drives (5 game viewer vehicles with 5 qualified guides)
 - Early evening sundowner game drives
 - Special interest safaris
 - Guided walking safaris
 - Photographic safaris
 - Abundant game viewing including Lions, Leopard, Cooksons Wildebeest, Crawshay's Zebra, Thronycroft's Giraffe and the largest population of Hippo in Africa and over 400 species of birds
-





+260 965 156181 (WHATSAPP) | INFO@LIONCAMP.COM | WWW.LIONCAMP.COM

