

# One&Only

CAPE TOWN

*South Africa*



## THE LION'S HEAD PENTHOUSE AT ONE&ONLY CAPE TOWN

The Lion's Head Penthouse (798m<sup>2</sup> total) is the latest ultra-luxury offering from One&Only Cape Town. Perfect for friends and families, for those who want to be together but also have the space to be apart. The Lion's Head Penthouse is an entertainer's dream – spacious, beautiful furnishings, wrap-around views and modern technology – whilst simultaneously, the lower level offers privacy and sanctity to escape, unwind and restore. For those who want to explore, One&Only Cape Town is on the doorstep of amazement.

The location is perfect - situated at the very top of the Marina Rise, with unobstructed views of Table Mountain, Robben Island, Devils Peak, Lions Head, the Cape Town Harbour and the V&A Waterfront. Inside, this double storey Penthouse is shades of slate and champagne, and imbues elegance and sophistication. It is comprised of four spacious en-suite bedrooms, two formal lounges, two comfortable television lounges, an indoor and outdoor dining area, an outdoor lounge with BBQ facilities and a glass plunge pool, a study, two bar areas, a modern kitchen and scullery, and an expansive patio.

The layout is predominantly open-plan, allowing a natural flow. Space and light are notable features – as every room offers floor to ceiling glass and views. The style is modern contemporary, and all furniture and accessories have been individually chosen for their quality, aesthetic and comfort. The Lion's Head Penthouse is filled with small details and touches, allowing guests to enjoy moment after moment of discovery. This includes an impressive art collection adorning the walls and spaces. There is also a smart automation system throughout.

The top level, spanning 431m<sup>2</sup>, is open plan and includes two comfortable lounge areas, a dining area, a television lounge, and a full-fitted kitchen. The kitchen, with all mod cons, boasts views to the sea and mountains, and is complimented by a connecting scullery with a service entrance for discreet access. An adjoining study and bar area lends itself to quiet contemplation, work or meetings and leads out onto a patio with outdoor seating. The entire floor has views to both sides – the one being the Cape Town stadium, Robben Island and Atlantic Ocean; and the other being Table Mountain. Running in parallel is a generous patio offering a brand new step-in glass plunge pool, a barbeque and dining area, and a lounge area for outdoor entertaining and relaxing.

The lower level is accessed either by a flight of stairs, or otherwise The Penthouse elevator. This is the bedroom area, complete with four en-suite bedrooms – three of which open onto an outdoor patio, and all of which have unparalleled views of Table Mountain and Cape Town. The master bedroom boasts a large walk-in wardrobe and bathroom, and a bath positioned window-side allowing you to take in the views of either the mountain or night sky. All the bedrooms offer an abundance of space, luxurious furnishings and finishes and supreme privacy. Every comfort has been considered, including a service entrance to the passageway and hidden kitchenette facilities for those wanting conveniences close at hand.

Guests of the Lion Head's Penthouse will have access to a series of additional benefits including personal training sessions, a 24 hour Butler Service, and access to an Isola Poolside Cabana for the duration of their stay.



#### COMPLIMENTARY INCLUSIONS

- Personalised in-room check-in
- 24 Hour Butler Service
- Access to all One&Only Cape Town areas and amenities
- Breakfast in Ochre Restaurant or in suite daily
- Fresh botanicals throughout the penthouse
- Isola poolside Cabana, to be booked in advance
- Twice daily housekeeping services at a service time convenient to your schedule
- 1-hour personal training session per guest
- Garment pressing service daily, one outfit per guest

#### SERVICES AVAILABLE AT AN ADDITIONAL CHARGE

- Private Chef to prepare and serve meals from the state-of-the-art kitchen with its own private service entrance
- Private Chef to prepare and serve a BBQ outdoors
- Event catering, should you wish to invite colleagues or friends
- In room dining service including Nobu cuisine
- Breakfast delivered to The Lion's Head Penthouse, on request
- A mixologist to prepare and serve world-class cocktails
- Wine tasting and consultation with a qualified sommelier
- Spa treatments done in the privacy of the penthouse
- Kitchen and wine cellar can be stocked prior or during arrival with items of your choosing
- Note: 24 hours' notice will be required to confirm butler and private Chef

#### SIZE

- Total Size - 798m<sup>2</sup>
- Two Storeys
- Upper Level - 431m<sup>2</sup>
- Lower Level - 367m<sup>2</sup>
- Paraplegic access throughout - Yes

#### ONE&ONLY CAPE TOWN ADDITIONAL FAMILY BENEFITS

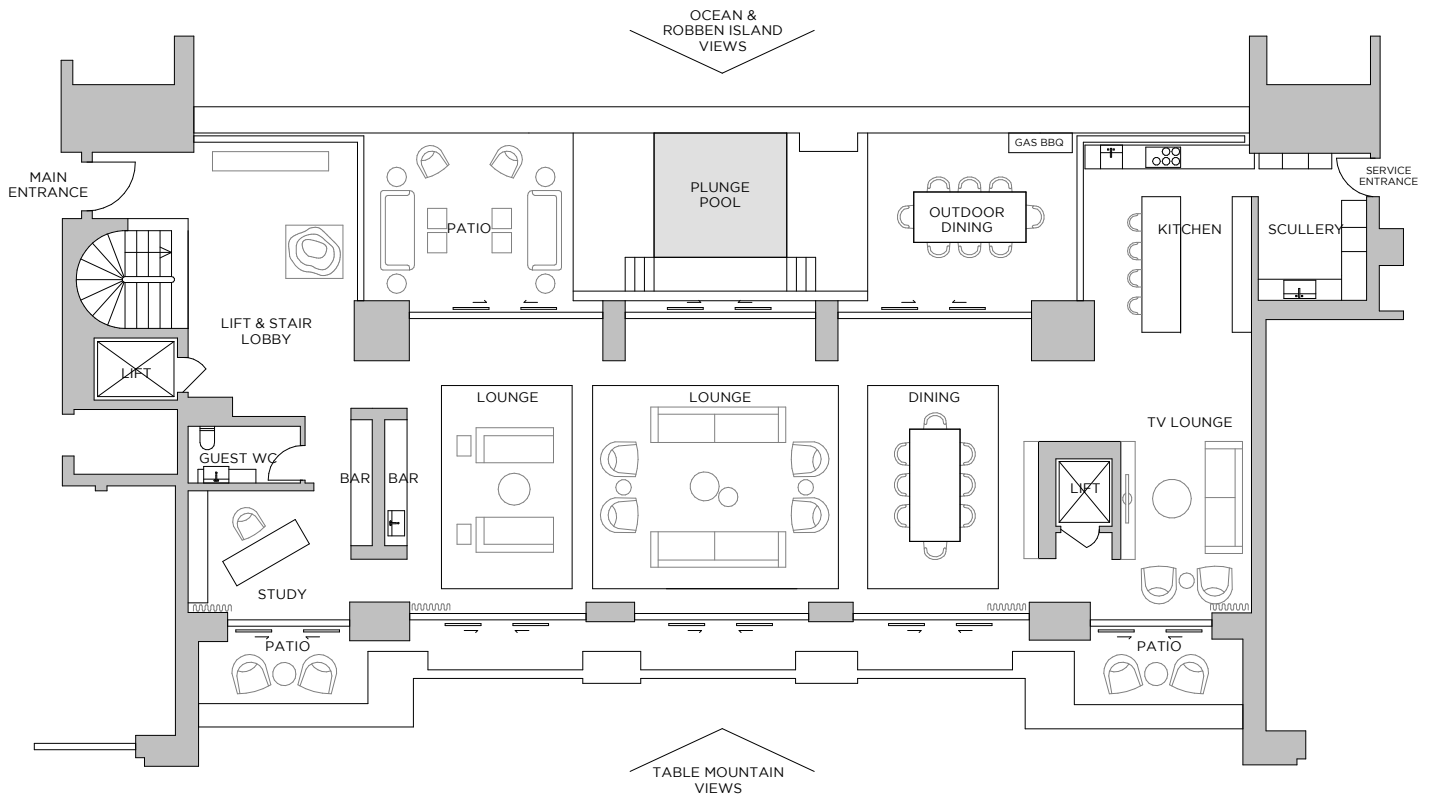
- Age-appropriate welcome gifting
- Complimentary dining for children under 12 years when ordering from the KidsOnly menu
- Complimentary use of KidsOnly Club facilities, including a daily programme of supervised activities for 4–11-year-olds
- Babysitting facilities (on request at an additional charge)
- Baby convenience items and toiletries available upon request
- Complimentary use of: Baby cot, highchair, bottle warmer, sterilizer and microwave

#### ONE&ONLY CAPE TOWN AMENITIES AND ACTIVITIES

- Nobu Restaurant
- Isola Restaurant
- Vista Bar & Lounge
- Ochre
- Wine Studio
- Fitness Centre
- KidsOnly Club
- Jarat Tours transfer service
- Banquet and Meeting facilities
- One&Only Spa
- Infinity pool with cabana and poolside service
- Curated Experiences
- Use of Spa Thermal Suites and Fitness Centre
- Full Concierge service
- Secure underground parking and valet
- Complimentary Wi-Fi throughout the resort
- Transfers to the Victoria & Alfred Waterfront with Jarat Tours (subject to availability)

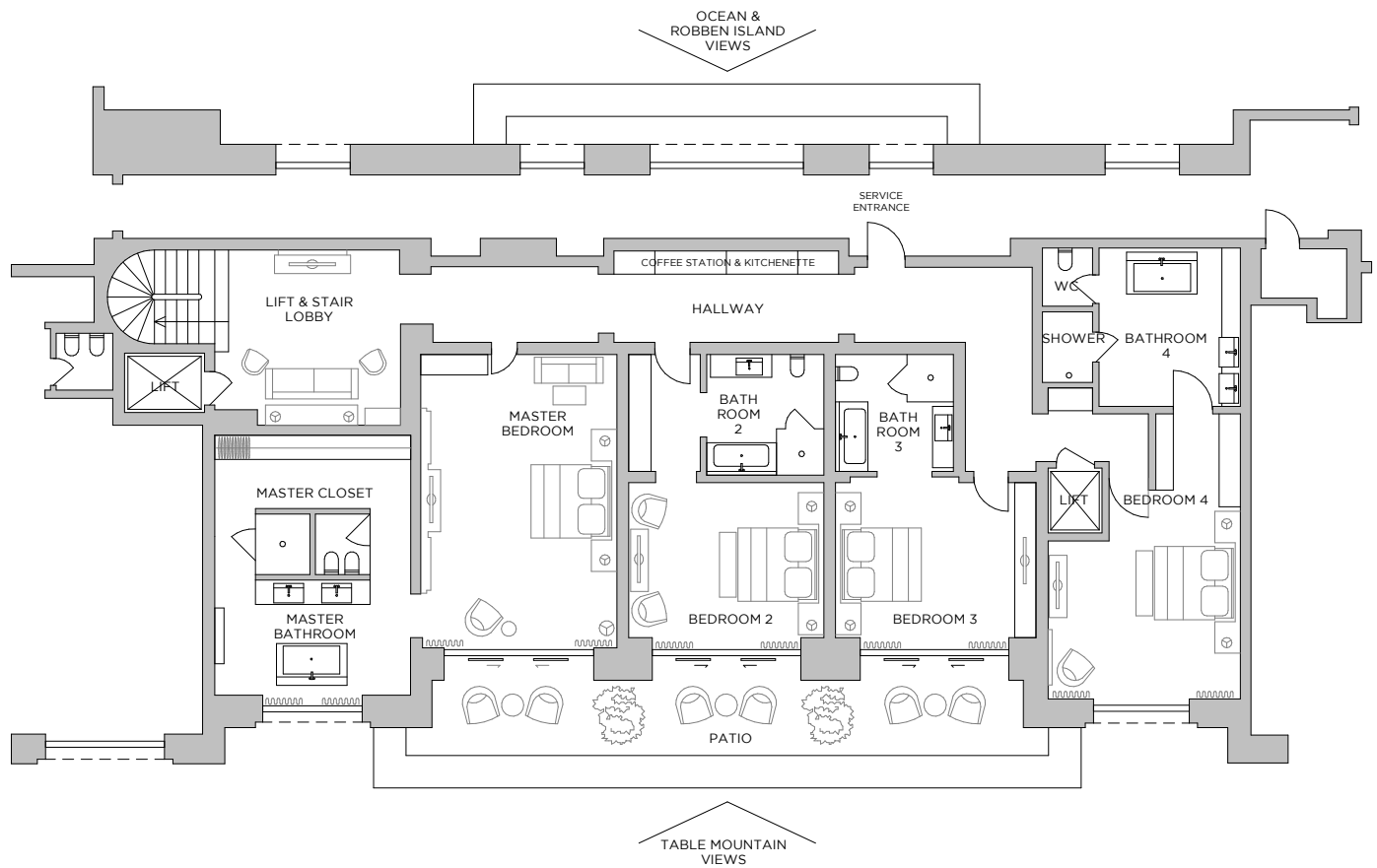


## THE LION'S HEAD PENTHOUSE SUITE FLOOR PLAN - UPPER LEVEL





## THE LION'S HEAD PENTHOUSE FLOOR PLAN - LOWER LEVEL



[oneandonlycapetown.com](http://oneandonlycapetown.com)

+27 21 431 5800 [reservations@oneandonlycapetown.com](mailto:reservations@oneandonlycapetown.com)  
 Dock Road, Victoria & Alfred Waterfront, Cape Town, South Africa