

MARA PLAINS CAMP

OLARE MOTOROGI CONSERVANCY | MAASAI MARA NATIONAL RESERVE



Mara Plains Camp is a one-of-a-kind camp located in the private 13,300-hectare Olare Motorogi Conservancy, just on the Maasai Mara National Reserve's northern boundary.

This intimate camp, one of Kenya's only three Relais & Châteaux properties (other being sister properties of Donyo Lodge and Mara Nyika Camp), blends the finest in wildlife viewing with the absolute best of safari hospitality and guiding.

No other Maasai Mara based camp offers the extensive traversing area of Mara Plains Camp, with access to a total of 40,000 hectares of private conservancy land and the world-renowned Maasai Mara, home to the Great Migration.

Each guest at Mara Plains contributes considerably to the success of the Olare Motorogi Conservancy's flourishing ecosystem; conservation fees paid to safeguard this habitat while supporting over 1,000 Maasai families. This partnership agreement ensures the survival of an astounding volume and variety of wildlife.

The camp is nestled in a lush forest on the meandering bends of the Ntiakitiak River, with careful thought given to every detail. The camp is not an imposition on the landscape, but rather a subtle refuge among the wild. Its presence does not detract from the ecosystem's visual beauty but incorporates it with sweeping views across the plains and careful position among the riverine forest. It is captivating on arrival.

Each of the suites has deep canvas canopied ceilings, rough-hewn wood floors and accents of East Africa's rich safari history. Thick Lamu wood doors, deep reds, and brass accents – these small details transport guests to a time and land far away. The well-appointed en-suite facilities (including a deep copper bath) and extensive private verandah complete what is genuinely a stunning concept. These stylistic elements and thoughtful environmental elements such as solar power and no cement make Mara Plains a modern-day safari retreat.

The Jahazi Suite at Mara Plains, an intimate, two-bedroom exquisite, tented suite, is built entirely under canvas and is a perfect partner to the safari experiences at Mara Nyika Camp, The Sambuk Suite at Mara Nyika and of Donyo Lodge. It is on raised, recycled railway sleeper decking and offers guests incredible views of the steady stream of wildlife parading past whilst discreetly tucked away under the tree canopy.



MARA PLAINS CAMP

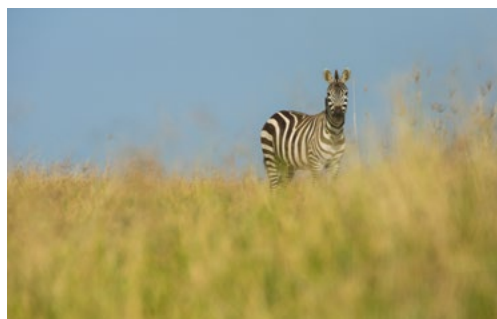
OLARE MOTOROGI CONSERVANCY | MAASAI MARA NATIONAL RESERVE



Central to the Jahazi Suite at Mara Plains is an indoor dining area leading out to a prominent private outdoor verandah and flanked by two large bedrooms with en-suite facilities consisting of a flush loo, double basins and indoor and outdoor showers and luxurious baths. A short walkway leads off the main area to a private swimming pool. Ceiling fans in the guest's bedroom and careful tented suite design maintain a comfortable climate for rest and relaxation. When residing at the Jahazi Suite at Mara Plains, guests automatically enjoy the services of a private safari vehicle and guide.

The Olare Motorogi Conservancy is reputed to have the lowest vehicle density in the Maasai Mara region, while also having the highest concentration of big cats anywhere in Africa. The camp is a sanctuary for resident species by day and night, including many of the Maasai Mara's 300 bird species. After dark, larger mammals frequent the camp and Maasai warriors escort guests to and from their suites. Hippos snorting and leopards barking often provide the night's chorus.

But most of all, Mara Plains is a showcase for one of the world's most magnificent wildlife havens. We believe in keeping the safari experience intimate and personal, so there is no set camp schedule or set mealtimes. The guest's preferences wildlife opportunities of the moment tailor the day's activities and dining arrangements.



Each guest suite has a set of professional camera and lenses available to them. Add to it the pair of high-quality binoculars, and it is impossible not to see and capture the region's incredible wildlife scenes.

CAMP FEATURES

Mara Plains Camp can accommodate a maximum of 10 adult guests (excluding the Jahazi Suite at Mara Plains).

Total Number of Bedrooms:

5 double or twin configuration suites;

The 2-bedroom private Jahazi Suite at Mara Plains can accommodate a family of 5 with 2 adults and 3 children (aged 6 – 15 years), or 4 adults traveling together;

1 Guide room with a double bed and a bathroom.

Type of Lodge:

Réserve Collection Safari Camp

Lodge Season & Opening:

Year Round

Ideal length of stay:

3 / 4 Nights

MARA PLAINS CAMP

OLARE MOTOROGI CONSERVANCY | MAASAI MARA NATIONAL RESERVE



CHECK OUT TIME

We maintain a high level of flexibility when it comes to check-out times at our camps. However, due to some scheduled air transfer schedules, there are instances where we may kindly request guests to check out of their suites by 9:00am. In such situations, our lodges and camps are set up to ensure that guests can utilise the facilities located in the central area. This includes access to Wi-Fi, the provision of complimentary drinks and lunch in the event of any unexpected delays, and access to hides or other activities if available.

CAMP CO-ORDINATES

1°20'33.6"S 35°09'50.7"E

ACCESS DIRECTIONS

- Scheduled aircraft transfers to the nearby Olare Motorogi airstrip, from Nairobi's Wilson domestic airport (flying time 1hr 15mins) and other locations in Kenya;
- Mara Plains Camp is an approximate 30-minute drive from the airstrip with often wildlife viewing opportunities en route;
- Private charters can also land at the nearby Olare Motorogi airstrip;
- Co-ordinates: S1°19'25.2", E35°14'27.3"
- Airstrip length: 1300m

ACTIVITIES

Wildlife viewing

Safari drives (day & night) take place in some of the Mara's most coveted vehicles. Each of the four Toyota Land Cruisers is open-sided, canopied and customised for photographers (fold-down screens, raised roofs, photographic bars, multi-plug invertors). With just four to six guests each, the Cruisers also have fully stocked fridges stocked with drinks and snacks. No two days are the same on safari. Safari drives typically start at sunrise, returning for lunch and depart again in the mid-afternoon before returning just after sunset. However, we will often go out all day, deep into the Reserve or Conservancy with a packed breakfast and lunch. One visit per guest per 3-night stay included, additional visits subject to park fees. Very often, our safaris will continue into the night, a possibility because of our location on a private conservancy.

Night drives are incredibly prolific in the Olare Motorogi Conservancy, and while they take patience, sightings commonly include lesser-known nocturnal mammals and even lion and hyena hunts.

MARA PLAINS CAMP

OLARE MOTOROGI CONSERVANCY | MAASAI MARA NATIONAL RESERVE



Hot Air Ballooning

Hot air ballooning is available but should be booked in advance and is subject to availability and additional cost. Departures are very early in the morning to allow time to transfer to the nearest launching point.

Cultural Experience

The Naboisho Women's Group cultural experience is supported by the Great Plains Foundation, enabling the group to purchase raw materials in bulk including a tailor hired to work on leather products. Available to guests staying at Great Plains Conservation camps all profits from the sale of their wares are ploughed back into the women's business training to ensure this group is self-sustainable. Items available for purchase include, but are not limited to, beaded & leather products, coasters, bracelets, necklaces, belts, dog collars, earrings, and decorated dawa sticks for example.

Photography

Each of Mara Plains' guest suites has a professional camera set, including a camera body and 100-400mm and 24-70mm lenses. Photos will be downloaded to a memory stick on guest's departure. Each suite comes with a pair of high-quality binoculars for guest use as well. Photographic tuition can be arranged for guests (at an additional cost) and we recommend prior booking if possible. Tuition can be either on company cameras or own guests' personal cameras.

Private vehicle option

Available for more flexibility upon request at extra cost, not compulsory for families travelling with children.

Private Guides

Private guides are encouraged and welcomed.

CENTRAL FACILITIES

- Dining room, wine room and bar;
- Main lounge and library on raised decks, uniquely framing the landscape;
- Coffee and tea station;
- Outdoor fire pit with seating;
- Great Plains Safari Boutique: Selling locally and regionally produced crafts, many of which support local community projects in the nearby Maasai communities. The Boutique also stocks the d&b clothing line: Dereck and Beverly Joubert have inspired this bespoke range of clothing they typically wear, and which is perfect and cool while on safari yet elegant when in the city. All materials are responsibly sourced.

Visit www.greatplainsconservation.com/safariboutique



MARA PLAINS CAMP

OLARE MOTOROGI CONSERVANCY | MAASAI MARA NATIONAL RESERVE

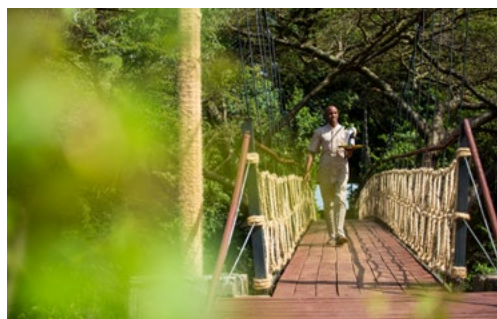
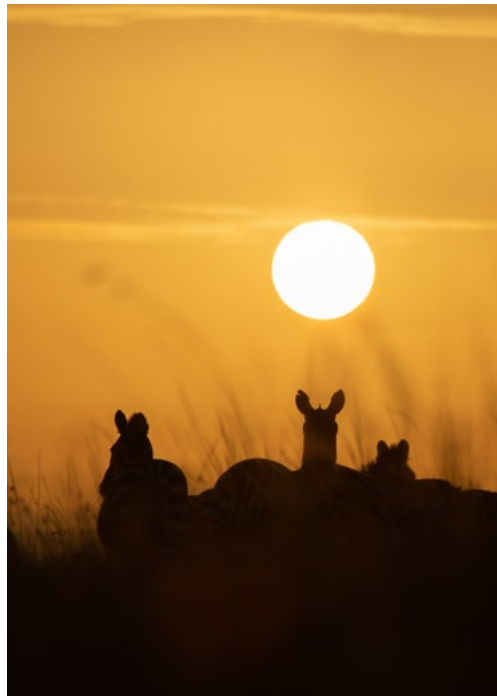
FOOD AND BEVERAGE

- Our world-class meals are Relais & Chateaux recognised;
- All meals included and prepared by our Executive Chefs and their teams in a state-of-the-art kitchen that guests are welcome to visit;
- All drinks and beverages are included, including imported spirits and champagnes;
- Group meals and/or individual tables, a la carte menu options;
- Indoor and outdoor dining;
- Private dining on guest's private verandah on request;
- All dietary requirements are catered for from regular to vegan to children; prior notice required;
- We are extremely flexible on timings. Picnic breakfasts or lunch (or both) are the norm due to very active safari drives, often delivered to the bush!

ACCOMMODATION DETAILS

Bedroom features

- 5 Guest tented suites with private verandah all measuring about 700 sq. foot in size;
- Suites are olive green in colour with high ceilings and netted windows, so are light and bright;
- The 2-bedroom private Jahazi Suite at Mara Plains with private swimming pool, private wildlife viewing vehicle & guide;
- Desk and dressing area as well as small lounge;
- Mini bar with drinks of choice;
- Tea and coffee station;
- Overhead ceiling fan;



- Honeymoon suite is Suite 4;
- Either twin or double bed configuration.

Bathroom features

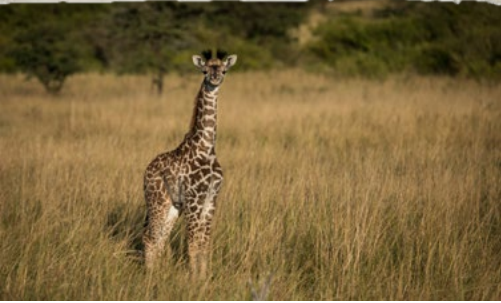
- En-suite with flush loo, shower (indoor), copper bathtub and double basins;
- Hot and cold running water;
- Soap, shampoo, conditioner and lotion provided;
- Power system does not support hairdryers, shavers or any high wattage device (low voltage hairdryers provided).

ACCOMMODATING CHILDREN AND SHARING ACCOMMODATION

- We look forward to having children stay with us that are 6 years and older;
- Triples for children sharing with adults may be possible upon request;
- The private Jahazi Suite at Mara Plains can cater for a maximum of four adults sharing or two adults and up to three children (aged 6 – 15), sharing in two separate bedrooms;
- Families with children may be accommodated in the same vehicle as other guests unless a private vehicle is booked and paid for;
- Young children must be supervised as the camp is open, with high predator densities in and around camp and there is a river nearby;
- Great Plains Young Explorers program – thoughtfully designed to explore a range of experiences and topics from birding to cooking to art to tracking wildlife.

MARA PLAINS CAMP

OLARE MOTOROGI CONSERVANCY | MAASAI MARA NATIONAL RESERVE



SPA TREATMENTS

Wellness spa with locally inspired treatments is available.

FITNESS

Yoga mats and bands are provided in each suite.

LAUNDRY

Included in nightly tariff - next day service, weather permitting.

POWER AND COMMUNICATION

Power

- The camp is run by an impressive solar farm;
- This system produces 240V, 24-hour electricity to the suites and main area;
- Plug points in each suite;
- Type of plug: Universal plug points;
- Power system does not support hairdryers, shavers or any high wattage device (low voltage hairdryers provided).

INTERNET & MOBILE

- Cell service is relatively good;
- Wi-fi available in guest suites;
- No cell phones or computers are allowed in the public areas of camp or on safari vehicles, only in the privacy of guest suite.

HEALTH AND SAFETY

Health

- Malaria: Minimal exposure risk– Malaria prophylaxis are recommended if guests are concerned; however, this is a remote area with little occurrence;
- Kenya is considered a Yellow Fever Zone. Consult your medical practitioner prior to travel;
- Guests must hold comprehensive medical insurance and emergency evacuation insurance;
- Senior staff all has first aid training;
- Nearest decent medical facility is in Nairobi.

Possibility of Disabled Access

- The camp layout is conducive to guests who use wheelchairs due to interconnected raised decking and pathways between suites and the main area. There are a few steps between the main entrance and arrival bridge, but our staff will be on hand to assist;
- For the walking impaired, Suites 1 and 3 are close to the main area with minimal steps.

Safety

- The camp is unfenced to wild animals that do move through the property especially at night. Security guards are armed with traditional spears;
- Fire extinguishers in each suite.

MARA PLAINS CAMP

OLARE MOTOROGI CONSERVANCY | MAASAI MARA NATIONAL RESERVE



MONEY MATTERS

Safes

Safes are provided in every suite.

Accepted Payment on Location

- Staff gratuities can be paid in Kenyan Shillings, US Dollars or GB Pounds;
- Credit card facilities are available in camp (except American Express) subject to 3.5% charge.

The Team

Lodge Owners

Great Plains Conservation

FOUNDATION INITIATIVE

Conservation Education

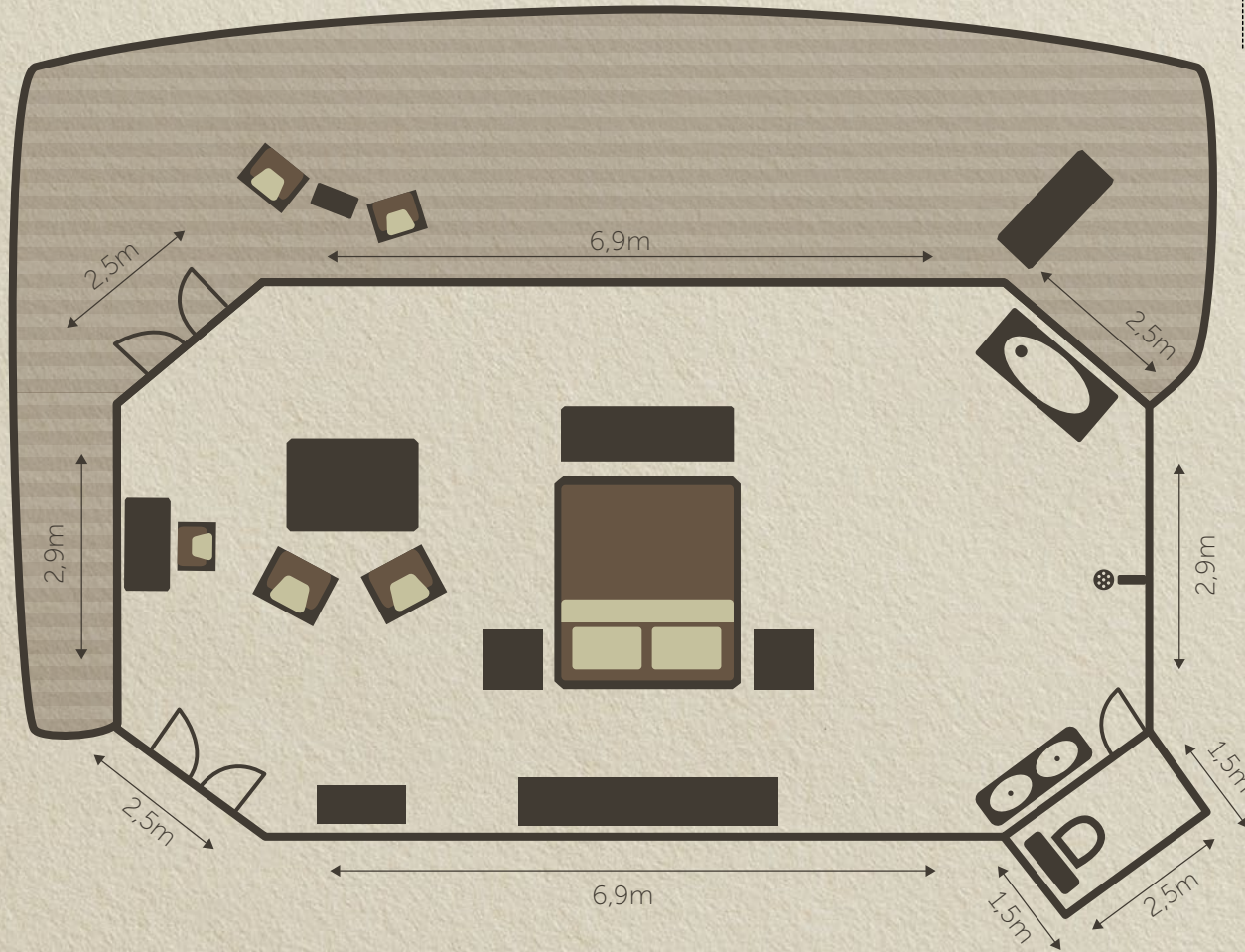
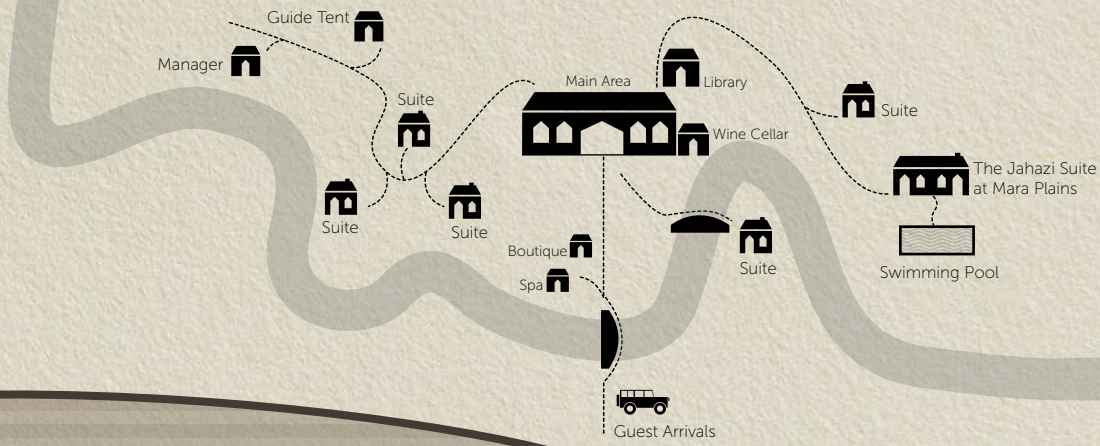
Engaging youth in local communities living alongside conserved land is critical to long-term conservation. Our conservation education programs engage youth with the natural world at a pivotal time in their lives. Great Plains Conservation believes that through thoughtful engagement, environmental education, fun and mentorship, youth in communities that surround our protected wildlife areas can learn to appreciate the uniqueness of their ecosystems and become champions for conservation.

Great Plains Student Conservation Camps are one of our longest-running community programs. Since the program began more than ten years ago, hundreds of children have benefited from the program in both Kenya and Botswana. Learn more at www.greatplainsfoundation.com

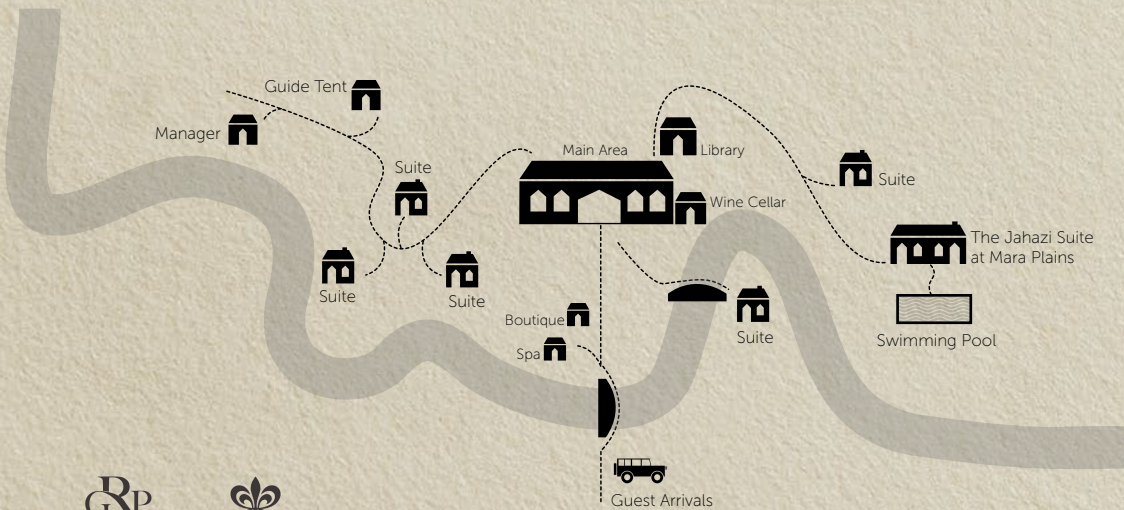
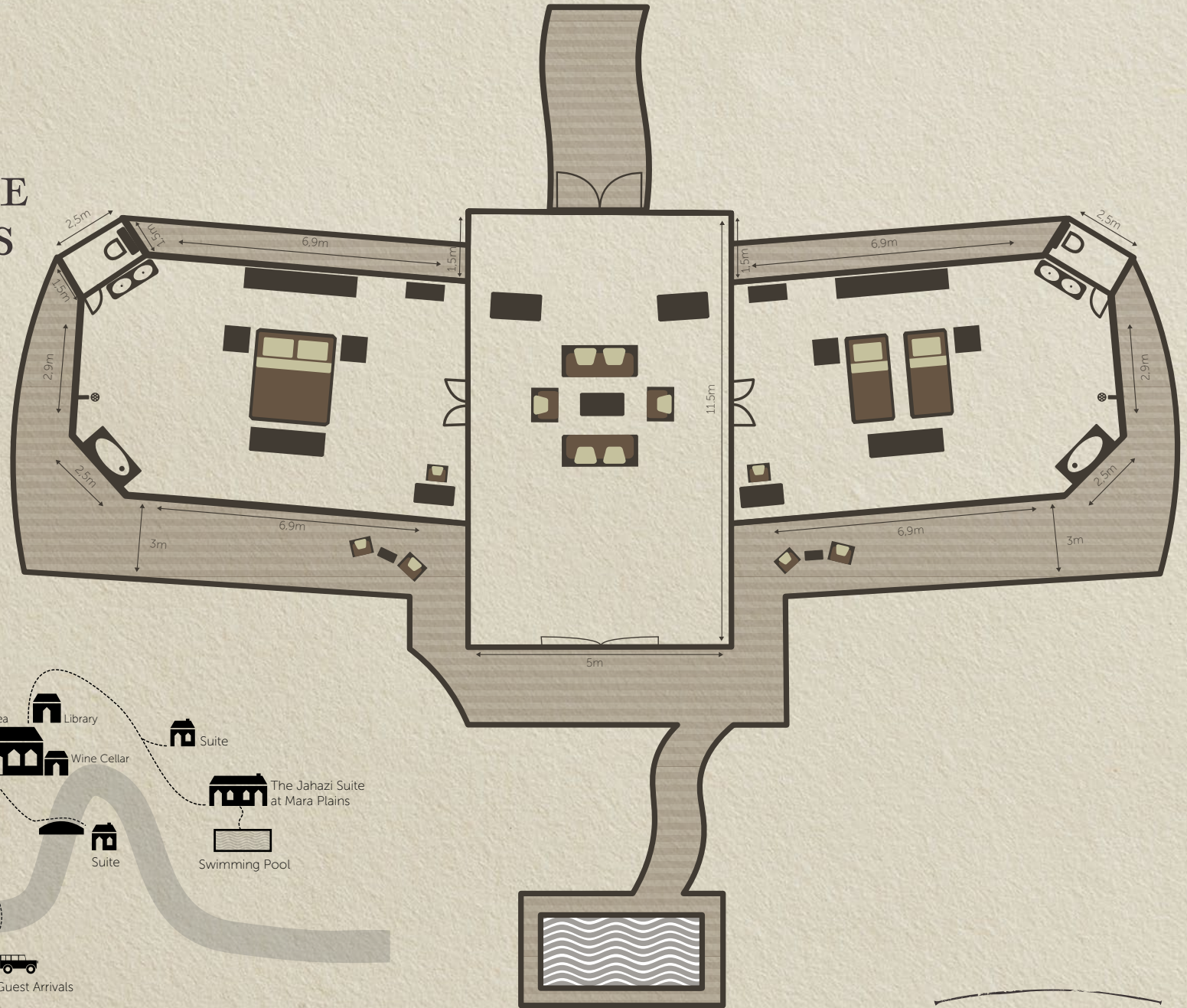
In addition to our own programs Great Plains Foundation keeps a list of school needs in the countries where we work. Needed items can be hand-carried by travelers or we can help purchase them locally. To learn more or to help support students and educators as part of your trip please reach out info@greatplainsfoundation.com



GUEST SUITE



THE JHAZI SUITE
 AT MARA PLAINS



GREAT PLAINS

CONSERVING AND EXPANDING NATURAL HABITATS



GREAT PLAINS CONSERVATION STRIVES TO FIND THE RIGHT FORMULA OF CONSERVATION, COMMUNITIES AND COMMERCE THAT MAKES A LASTING, SUSTAINABLE DIFFERENCE TO THE WORLD'S ICONIC WILDLIFE HABITATS



Kenya

Tanzania

Mount Kilimanjaro

Serengeti National Park

Maasai Mara Reserve

Shompole

Nairobi

Camp Kunji

Mara Toto Tree Camp
Mara Expedition Camp

Mara Plains Camp & The Jahazi Suite at Mara Plains
Mara Nyika Camp & The Sambuk Suite at Mara Nyika

Mara Triangle

Ol Donyo Lodge

KENYA CAMPS

ACTIVITY	OL DONYO LODGE	MARA PLAINS CAMP & THE JAHAZI SUITE AT MARA PLAINS	MARA NYIKA CAMP & THE SAMBUK SUITE AT MARA NYIKA	MARA TOTO TREE CAMP OPENING JULY 1, 2024
Camp Classification	Réserve-Collection	Réserve-Collection	Réserve-Collection	Réserve-Collection
Location	Mbirikani Group Ranch	Olare Motorogi Conservancy	Naboisho Conservancy	Maasai Mara National Reserve
Size of concession / reserve	110 000 Hectares / 275 000 Acres	13 300 Hectares / 33 000 Acres	20 000 Hectares / 50 000 Acres	28 000 Hectares / 69 000 Acres
Traversing	Mbirikani Group Ranch	Olare Motorogi Conservancy & Maasai Mara National Reserve	Naboisho Conservancy & Maasai Mara National Reserve	Mara North Conservancy & Maasai Mara National Reserve
Number of Suites / Tents	8 Suites	5 Suites	3 Suites	4 Suites
Family Accommodation	One 2-bedroom suite	The 2-bedroom Jahazi Suite at Mara Plains	The 2-bedroom Sambuk Suite at Mara Nyika. One two-bedroom suite	n/a
Children can be accommodated from:	5 Years	6 Years	6 Years	6 Years
Day Drives	Yes	Yes	Yes	Yes
Night Drives	Yes	Yes	Yes	Yes (water level dependent)
Cultural Experience	Yes	Yes	Yes	Yes
Private Vehicle (at an additional charge)	Yes	Yes	Yes	Yes
Guided Walks	Yes	No	No	No
Horseback Riding	Yes	n/a	n/a	n/a
Hot-Air Ballooning (at an additional charge)	n/a	Yes	Yes	Yes
Mountain Biking	Yes	n/a	n/a	n/a
Hide	Yes	n/a	n/a	n/a
Main Swimming Pool / Private Plunge Pools	Yes (Main Pool & Private Plunge Pools)	Yes (Jahazi Suite only)	n/a	n/a
Shower	Indoor & Outdoor	Indoor	Indoor	Indoor
Bath	Yes	Yes	Yes	Yes
Hairdryers (low voltage)	Yes	Yes	Yes	Yes
Mosquito Nets	Yes	Yes (On all tent sides)	Yes (On all tent sides)	Yes (On all tent sides)
Fans	Standing fan	Overhead fan	Standing fan	Standing fan
Wi-Fi – in-room (complimentary)	Yes	Yes	Yes	Yes
Safe - In-room	Yes	Yes	Yes	Yes
Spa treatments (at an additional charge)	Yes (In-room only)	Yes	Yes (In-room only)	Yes (In-room only)
Fitness	In-room Equipment	In-room Equipment	In-room Equipment	In-room equipment
Boutique on site	Yes	Yes	Yes	Yes

KENYA CAMPS

ACTIVITY	MARA EXPEDITION CAMP
Camp Classification	Explorers Collection
Location	Maasai Mara National Reserve
Size of concession / reserve	28 000 Hectares / 69 000 Acres
Traversing	Mara North Conservancy & Maasai Mara National Reserve
Number of Suites / Tents	5 Tents
Family Accommodation	One 2-bedroom family tent
Children can be accommodated from:	6 Years
Day Drives	Yes
Night Drives	Yes (water level dependent)
Cultural Experience	Yes
Private Vehicle (at an additional charge)	Yes
Guided Walks	No
Horseback Riding	n/a
Hot-Air Ballooning (at an additional charge)	Yes
Mountain Biking	n/a
Hide	n/a
Main Swimming Pool / Private Plunge Pools	Main swimming pool
Shower	Indoor
Bath	n/a
Hairdryers (low voltage)	n/a
Mosquito Nets	Yes (On all tent sides)
Fans	Standing fan
Wi-Fi – in-room (complimentary)	Yes
Safe - In-room	Yes
Spa treatments (at an additional charge)	n/a
Fitness	Yoga mats
Boutique on site	n/a