

THE
PLETTENBERG
PLETTENBERG BAY

Fact Sheet

PLETTENBERG BAY, GARDEN ROUTE, WESTERN CAPE

The Plettenberg part of The Liz McGrath Collection is situated on a rocky headland in one of South Africa's most spectacular beach towns - tucked neatly into the Garden Route, Plettenberg Bay boasts a year-round temperate climate and pristine beaches, making it the ultimate South African seaside escape. The 5-star Small Luxury Hotels of the World property, with its 35 beautifully appointed rooms and 2 family style private villas, showcases the most breathtaking vistas in Southern Africa, with views of the ocean, mountains and endless stretches of golden sand. Guests may enjoy world-class cuisine courtesy of The Plettenberg restaurant, where fresh seafood is the order of the day.

FACILITIES & SERVICES

During your stay with us you can look forward to a range of world-class facilities, including two sparkling rim-flow pools with gorgeous sea views, our indulgent Fresh Wellness Spa, Gym and travel desk – as well as our many complimentary, family-friendly services and amenities. We'll make sure that you'll want for nothing!

- Wellness Spa
- 2 rim-flow Swimming Pools with sea views (1 heated)
- Gym
- Travel Desk
- Family-friendly – Kids Turn down
- Beach Towels & Umbrellas
- Body Boards
- Complimentary Minibar
- Complimentary WiFi
- Whale Bell
- Binoculars (whale watching) from reception
- Pet Friendly

Luxurious Treats Aplenty



A host of culinary options await at The Plettenberg, ready to spoil your palate. Our modern restaurant is a wonderful location for all-day alfresco dining, with the most beautiful sea views. For cocktails, award-winning wines and pre- and post-dinner drinks head to the Sand Bar & Sun Lounge. Other gourmet indulgences include our Afternoon Tea and picnics, which can be arranged according to your preferences, be it for excursions or on the beach.

- Our restaurant - Overlooking our pool and the ocean, with mesmerising ocean vistas from sunrise to sunset, the contemporary dining room and outdoor terrace are perfect for alfresco breakfasts, lunches and dinners.
- Sand Bar & Summer Lounge - A wide selection of local and international spirits, expertly mixed cocktails, award-winning wines, and pre- and post-dinner drinks – whatever tickles your fancy, you will find it at our stylish bar and lounge.
- Afternoon Tea - Served in the Blue Lounge, Garden Room or on the restaurant terrace, our decadent Afternoon Tea features both savoury treats and sweet delights, together with your choice of infused tea or coffee.
- Picnics - Our mouthwatering picnics are packed for guests on request, to be enjoyed during excursions or on the beach. We cater for all dietary requirements



Experience the ultimate seaside stay at The Plettenberg. Whether you choose one of our entry-level Double Rooms; spacious Premier Suites with open-plan lounges and step-out balconies or private terraces; or exclusive family Villas, you can rest assured that you will be treated to the most stylish and comfortable accommodation. Depending on the room type, we will spoil you with views of our pools, the surrounding area, or the bay and ocean.

- Double Rooms (8)
- Luxury Double Rooms (9)
- Luxury Double Rooms with sea view and spacious sitting area (6)
- Suites with open-plan lounge and step-out balcony or private terrace (5)
- Premier Suites with open-plan lounge and step-out balcony, boasting breathtaking views of the bay (7)
- Villas (2)
 - The Beach House features 2 bedrooms (master bedroom with sea view), a private heated pool with sea view, kitchen, dining room and lounge with sea view
 - The Lookout Villa features 3 bedrooms (master bedroom with sea view), a private heated pool with sea view, kitchen, dining room and lounge with sea view



Heavenly Seaside Living

The Plettenberg Bay area brims with activities for all ages and interests. Enjoy land- or ocean-based whale and dolphin watching, go on a wine tour, venture out to a Nature Reserve, play golf, do some game viewing, book a river cruise, relax on the beach, hit the waves, or explore the surrounding mountains on foot or by bike. The area beckons to be explored, be it on your own, as a couple or with the whole family!

ONSITE

- Fresh Wellness Spa
- Direct Beach Access
- Swimming Pools
- Board & Card Games
- Land-based dolphin & whale watching, directly from the hotel
- Fat Biking directly from the hotel

OFFSITE & FURTHER AFIELD

- Beaches
 - Lookout Beach (Blue Flag) 950m
 - Central & Hobbie Beach 1.3km
 - Keurbooms Lagoon Beach 3.5km
 - Robberg Five Beach (Blue Flag) 3.7km
 - Keurbooms Beach (Blue Flag) 9.3km
 - The Dunes Beach (Blue Flag) 9.8km
- Ocean Adventures
 - Whale and Dolphin Adventures 1.4km
 - Sea Kayaking 1.2km
 - Seal Adventures 1.3km
 - Deep Sea Fishing 1.3 km
 - Sailing 1.3km
 - Scuba Diving 2.8km
 - Learn to Surf & SUP 3.6km
 - Kite Surfing 34.4km
- Adrenalin Adventures
 - Sky Diving 7.9km
 - Horse Riding 18km
 - Canyoning 21.9km
 - Bungy Jumping 40.5km
 - Blackwater Tubing 61.5km
- Golf Courses (SA Top 100)
 - Plettenberg Bay Country Club 3.8km
 - Goose Valley Golf Club 4.2km
 - Pezula Golf Club 37.1km
 - Simola Golf & Country Estate 40.5km
 - George Golf Club 95.7km
 - Oubaai Golf Estate 109km
 - Fancourt 110km
 - Pinnacle Point Golf Course 146km
- Outdoor Activities & Attractions
 - Radical Raptors 8.1km
 - Robberg Nature Reserve & Nature Walks 8.2km
 - Nature Walks & Bird Watching 8.2km
 - Keurbooms River Ferries 12.1km
 - Knysna Elephant Park 12.8km
 - Jukani Wildlife Sanctuary 13.6km
 - Knysna Garden of Eden 17.6km
 - Game Drives 21.3km
 - Elephant Sanctuary Plettenberg Bay 22.6km
 - Monkeyland 22.9km
 - Birds of Eden 22.9km
 - Tenika Wildlife Sanctuary 23.8km
 - Knysna Paddle Cruiser 34.2km
 - The Heads Knysna 36.2km
 - Otter Trail 57.2km
 - The Big Tree Tsitsikamma 61.3km
 - Tsitsikamma Canopy Tours 61.6km
 - Storms River Mouth 65.4km
 - Dolphin Trail 65.4km
 - Acrobranch Garden Route 69.7km
 - Cango Wildlife Ranch 156km
 - Meerkat Adventures 163km
 - Cango Ostrich Farm 167km
 - Cango Caves 182km

Garden Route Fun in the Sun



OFFSITE & FURTHER AFIELD

- Art & Culture
 - Muffin Bekker Art Studio 500m
 - Milkwood Gallery 650m
 - Qolweni Township Tours 4.3km
 - Feather Gallery 31.7km
 - Knysna Fine Arts Gallery 33.5km
 - Tsitsikamma Khoisan Village 39.4km
 - Gallop Hill Gallery 58.3km
- Plettenberg Bay Winelands
 - Plettenvale Wine Estate 8.3km
 - Luka Wines 11.4km
 - Bramon Wine Estate 19.7km
 - Newstead Wines 19.9km
 - Packwood Wine 21.1km
 - Redford Lane Wines 24.8km
 - Kay and Monty Vineyards 24.8km
 - Lodestone Wines 25.5 km
- Micro-Breweries & Distillers
 - Barringtons Micro Brewery 1.4km
 - Red Bridge Brewing Company 30.9km
 - Knysna Gin Distillery 31.6km
- Markets
 - Old Nick Village 2.9km
 - Global Village 3.5km
 - The Heath Market 8.1km
 - Thyme & Again Market 8.5km
 - Harkerville Saturday Market 13.6km
 - Bread & Brew Market 19.1km
 - Sedgfield Saturday Market 62.8km
- Festivals
 - Plett Arts Festival (June/July)
 - Plett Wine & Bubbly Festival (March)
 - Knysna Oyster Festival (June/July)
 - Pink Loerie Festival (April/May)
 - Plett MTB Festival (December)



*A Treasure Trove
of Experiences*

A spectacular wedding and honeymoon destination, The Plettenberg boasts a range of scenic indoor and outdoor locations for both small, intimate dos and grand affairs. Whether you dream of a lavish wedding for over 80 guests, prefer a small ceremony, or wish to elope altogether, our knowledgeable team will take care of everything – leaving you free to focus on the day while we will be making sure that it will be an event to cherish forever.

- Indoor, poolside or outdoor/rooftop overlooking the bay
- Small or large ceremony & reception
- Intimate destination weddings/elopement
- Personalised set menus & world-class wines
- Catering to a maximum of 120 guests for the ceremony, and 80 guests for the reception
- Honeymoons - The Plettenberg, The Marine and The Cellars-Hohenort also present wonderful honeymoon options for both overseas and local couples. Although unique in design and offering, what combines these three properties is the legacy of the formidable Liz McGrath, who imbued each one of them with an unmistakable sense of style.



Sharyn Hodges



I Do

Be it a small, private celebration, special family occasion, business meeting or no-expenses-spared corporate launch, you are sure to find the perfect venue within the grounds of The Plettenberg. Featuring several indoor and outdoor locations, including a boardroom for executive meetings, our restaurant is ideal for sit-down celebrations and we can host cocktail-style events in various spaces.

VENUES

	SQM	CINEMA	SCHOOLROOM	BOARDROOM	U-SHAPE	BANQUET	COCKTAIL
Garden Room	50	30	30	30	30	-	40
Blue Lounge	40	30	30	18	16	-	-
The Roof Terrace *	135	-	-	-	-	60	60
Restaurant	105	-	-	-	-	60	-
Blue Wing Terrace *	280	30	-	-	-	-	40
Boardroom	34	-	-	10	-	-	-

*Outdoor venue - weather dependent



The Plettenberg cares about your wellbeing - visit our plush spa and take advantage of our various exercise options to make sure that you feel fit, rested and invigorated.

FRESH WELLNESS SPA

Featuring a cool, serene interior, our Fresh Wellness Spa offers the perfect retreat for guests looking to relax, unwind and recharge. The spa menu features a range of indulgent signature treatments and spa packages for ladies, gents and couples, using indigenous ingredients such as plant and marine-infused skin and body care products.

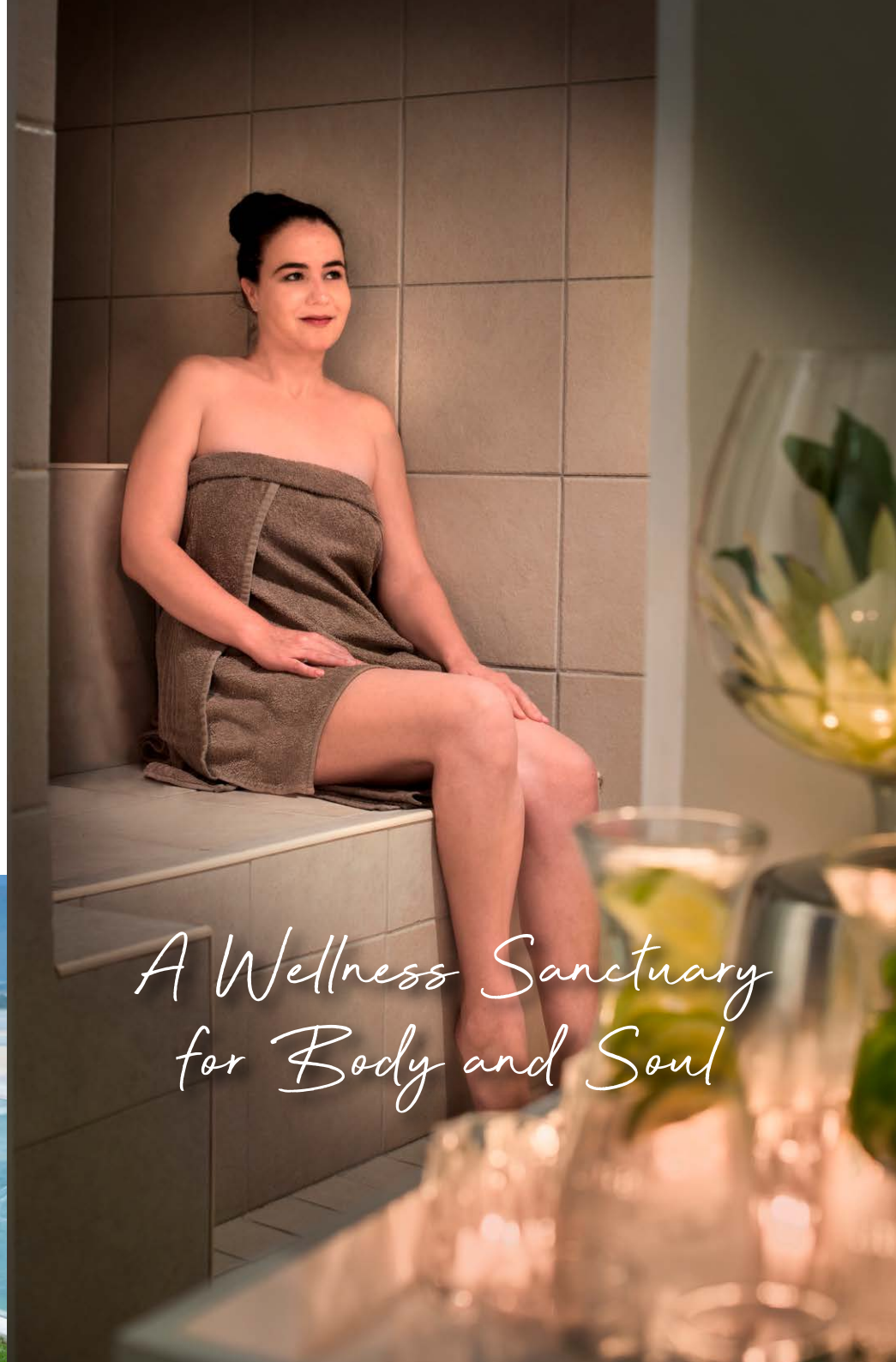
- Skin and Body Treatments
- Touch Therapies
- Steam Room
- Spa Packages
- Hand and Foot Therapy
- Grooming
- Facials and Eye Care

STAY ACTIVE

Take advantage of our "Gym in a Bag" - a range of portable workout equipment available on request from reception. If you are looking for outdoor activities, there's hiking in the Robberg Nature Reserve, while Lookout and Central beaches are great for walking and running - or cycle the beach on a rented Fat Bike!



Keeping Fit



*A Wellness Sanctuary
for Body and Soul*

THE PLETTENBERG

PLETTENBERG BAY



40 Church St, Plettenberg Bay, 6600,
Garden Route, Western Cape, South Africa

+27 (0) 44 533 2030

reservations@collectionmcgrath.com

SMALL
LUXURY
HOTELS
OF THE WORLD

theplettenberghotel.com

#MyPlettenberg

#MyMcGrath

f [ThePlettenberg](https://www.facebook.com/ThePlettenberg)

@ [theplettenberghotel](https://www.instagram.com/theplettenberghotel)



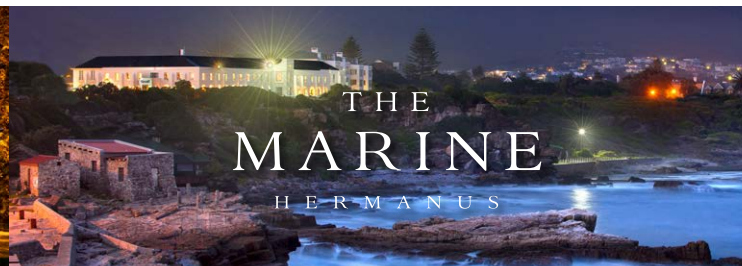
The Liz McGrath Collection celebrates diversity and inclusion within our valued staff and guests. We are dedicated to helping LGBTQ+ travellers feel welcome and create inspiring and enriching travel experiences.



THE
CELLARS-
HOHENORT
CAPE TOWN

The 5-star Cellars-Hohenort, a member of The Liz McGrath Collection, is situated in the historical Constantia Valley. The hotel's 51 guest rooms and suites boasts breathtaking views of Table Mountain and the property's award-winning gardens. On-site restaurant, Greenhouse, is renowned as one of South Africa's top culinary destinations.

thecellars-hohenorthotel.com



THE
MARINE
HERMANUS

The Marine, a member of The Liz McGrath Collection, is one of South Africa's most spectacular seaside hotels. Located on Hermanus' famous cliff path, overlooking the breathtaking Walker Bay, the hotel is the ultimate location for whale watching during whale season - often directly from the sea view bedrooms. The Marine offers various dining options - The Pavilion, The Sun Lounge & Bar and the modern, kitchen-focused Origins restaurant.

themarinehotel.co.za



Atlantic Ocean

Indian Ocean

LMC
LIZ MCGRATH
COLLECTION