

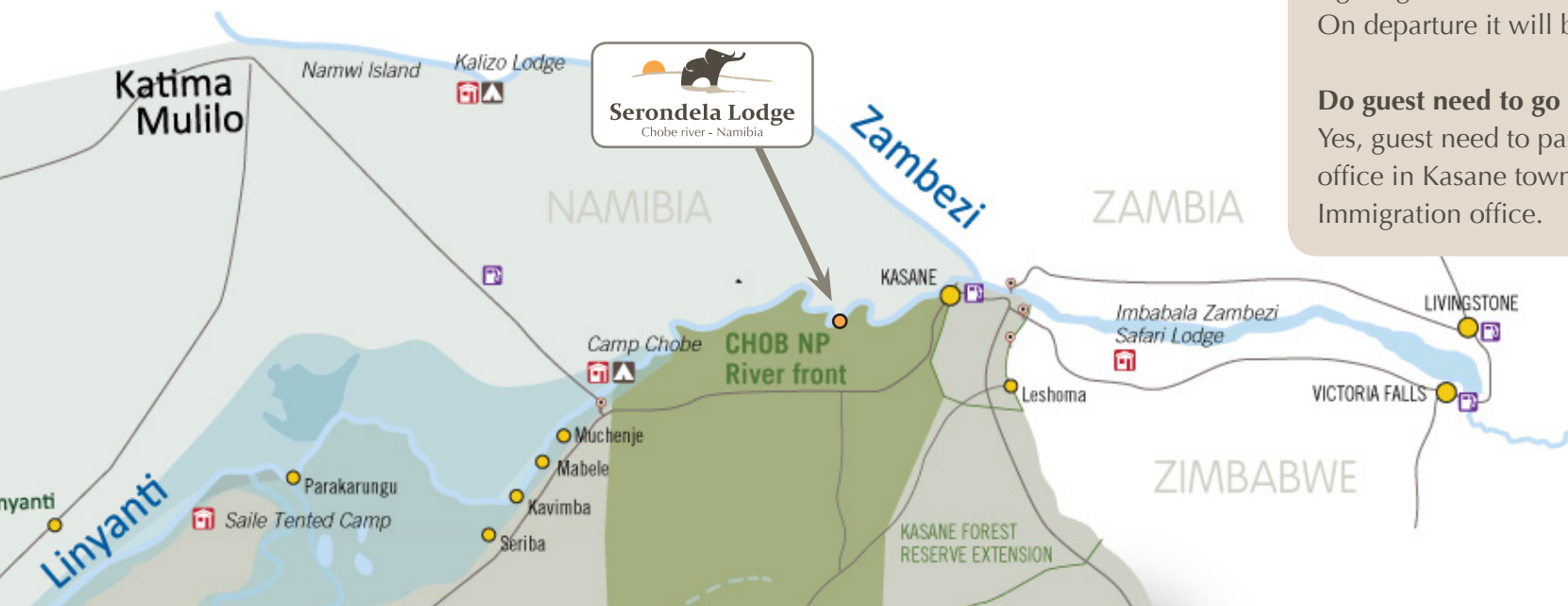


Serondela Lodge

Chobe river - Namibia

LOCATION

- The lodge is in **NAMIBIA!**
- It's opposite the Chobe NP (on the other side of the river).
- It's 17 km west from Kasane.
- Only accessible by boat from kasane (free at fix times).
- It's opposite the Chobe NP (on the other side of the river).



FAQ

Where is exactly the lodge?

Serondela Lodge is located in the namibian side of the Chobe river. Precisely in front of the famous sighting spot in the Chobe NP called Serondela. This is 17km by road from Kasane and 25km by boat.

The lodge is built in Kabulabula conservancy and seasonally it becomes an island.

Is the lodge only accessible by boat for guests?

Yes. The road from Ngoma to Serondela Lodge is flooded or inaccessible. The FREE transfers from Kasane are on it's self a unique game viewing experience. Pick-up at immigration office in Kasane between 14:00 and 15:00. Drop off in Kasane at 9:00. Trasfers request at different times will be charged.

How long does it takes from Kasane to the Lodge?

The duration of a transfer differs from Pick-up and Drop-off. On arrival to the lodge the Pick-up transfer will be a sighting boat cruise and it could take from 2 to 3 hours. On departure it will be a 1h30 transfer to Kasane.

Do guest need to go via immigration control?

Yes, guest need to pass via the Botswana immigration office in Kasane town and also in Namibia at the Kasika Immigration office.



PICK UP in KASANE

Time: 14:00 to 15:00

Where: Immigration in Kasane

Parking: Spar mall parking after offloading the luggage.

Airport pick up has to be arranged prior to arrival. Pick-ups can be arranged from Katima or Kongola and Victoria Falls.

DROP OFF in KASANE

Time: 09:00 to 09:30

Where: Immigration in Kasane
Airport drop off have to be arranged prior to departure.

Pick-up / Drop Off at different times will be charged extra costs.

Call: +264 66252677



Serondela Lodge

Chobe river - Namibia

THE LODGE

- 7 Double and 1 family rooms, all facing the Chobe river.
- Private and exclusive area.
- Wildlife sightings all year round form the lodge.
- DBB and FB solutions, minum 2 night stay.
- Same owners of Nkasa Lupala Lodge and Jackalberry Camp.

FAQ

How many guests can Serondela accommodate?

The Lodge consists in 7 double rooms and 1 family room (2 adults + 2 Children).

All the rooms are well-spaced to ensure privacy and each have a balcony facing the river.

The buildings are made out of sand eco-bags plastered walls. A very ecological technique that also ensures very high thermal insulation.

We offer have 2 double guide rooms.

Best room view!

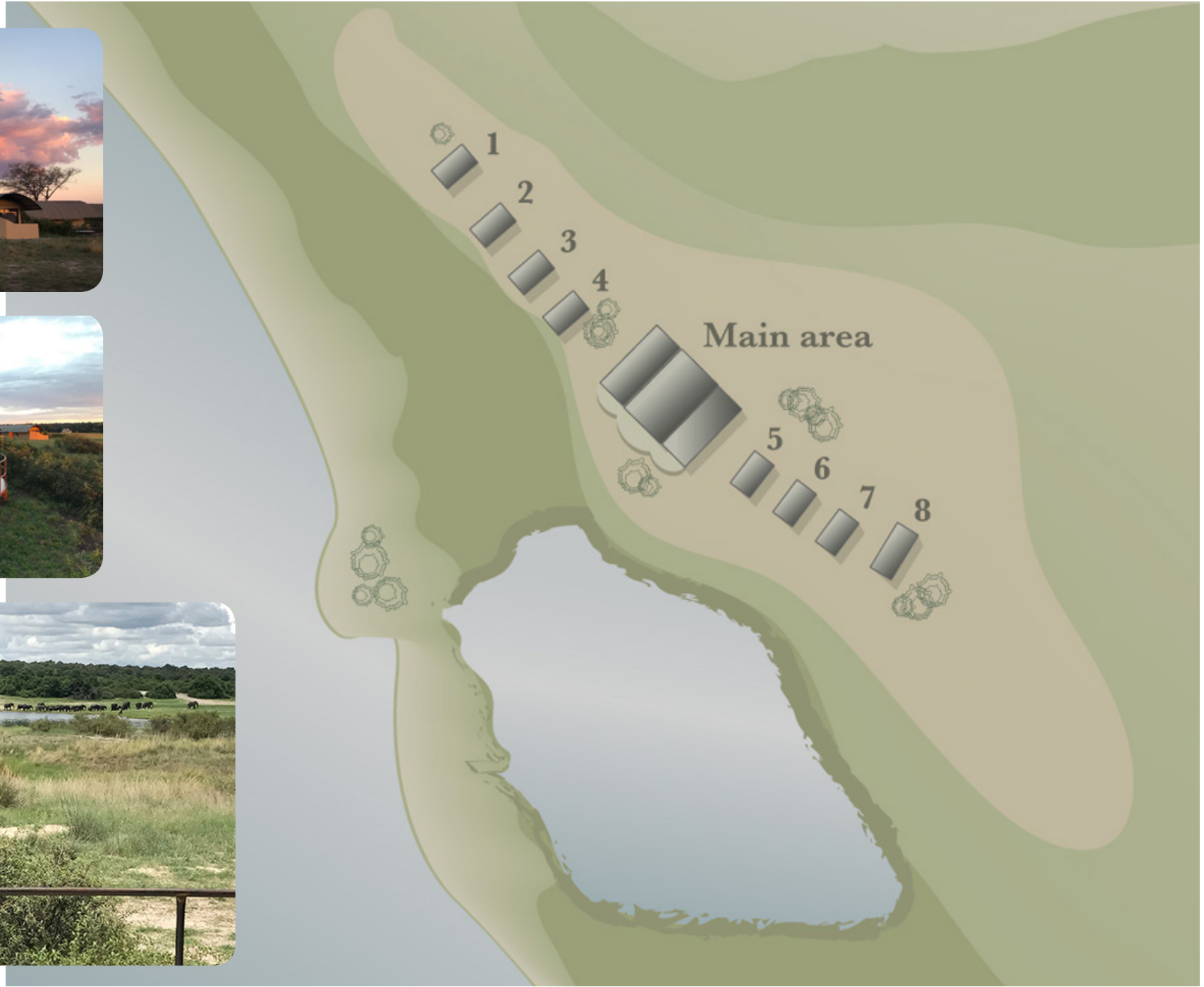
All the rooms are on high ground overlooking the banks of the Chobe river. The south West facing balconies look into the renewed Serondela area, famous for big herds of Elephants and many other animals that come to feed and drink.

Service!

Having only 8 rooms, the guest at Serondela will have a dedicated service with a smile.

Serondela will be managed by Laura and Simone who after many years at Nkasa Lupala Lodge will now starting this new adventure. This will ensure the same warm welcome and passionate attention.







Serondela Lodge

Chobe river - Namibia

ACTIVITIES

- Boat Cruises far from Kasane river traffic...
- Chobe NP Game Drives
- Masubia village visit
- Nature walk on the banks of the Chobe river

FAQ

What activities does the lodge offer?

The Full board plus includes for the minimum 2 night stay the following:

- 2h30 Boat cruise on arrival,
- 1h30 AM Safari walk or Village visit
- 2h30 PM Sundowner cruise
- 3h Game drive in the Chobe NP on departure day
- Drop off transfer cruise.

Dinner, Bed and Breakfast includes:

2h Boat cruise on arrival and drop off transfer cruise.
The daily lodge scheduled activities, are available at additional cost.





Wild Waters

Exclusive Camps & Lodges

www.nkasalupalalodge.com

www.jbcamp.com

www.rupara.com

www.serondela.com

